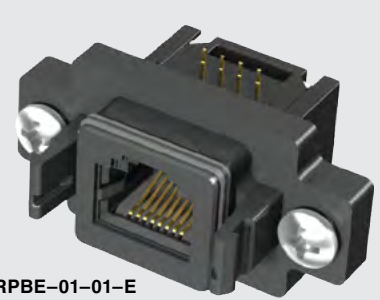




RPCE-01-E-00.25-D-C5E



RPBE-01-01-E

**RPBE, RPCE SERIES**

# IP68 SEALED ETHERNET SOCKET

Mates with:

RCE

**SPECIFICATIONS**

For complete specifications see [www.samtec.com?RPBE](http://www.samtec.com?RPBE)

**Insulator Material:** Black Liquid Crystal Polymer

**Contact:** Phosphor Bronze

**Operating Temp Range:** -40 °C to +75 °C

**Seal:** Rubber

**Screw:** Stainless Steel

**Nut:** Stainless Steel

**Sealing Washer:** Rubber

**Seal:** Rubber

**DUST CAPS**

PORT	PART NO.	TYPE
-01	DCA-RPBE-01-01-P	Push-On/No Latch
-01	DCA-RPBE-01-01-L	Latching
-02	DCA-RPBE-02-01-L	

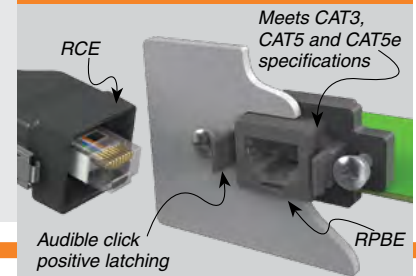
**Note:** Meets IP68 requirements for dust and waterproof sealing when mated or with dust cap.

RPBE	NO. OF PORTS	LEAD STYLE	PLATING
-01, -02	-01 = Right-angle	-E = 50 μ" (1.27 μm) Gold on contact, Flash Gold on tail	

NO. OF PORTS	A	B	C
-01	(46.10) 1.815	(36.95) 1.455	(19.72) .776
-02	(67.10) 2.642	(57.95) 2.281	(40.72) 1.603

**APPLICATION**



Mates with:

RCE

**SPECIFICATIONS**

For complete specifications see [www.samtec.com?RPCE](http://www.samtec.com?RPCE)

**Insulator Material:** Glass Filled Thermoplastic

**Contact:** Phosphor Bronze

**Shield:** Phosphor Bronze

**Operating Temp Range:** -40 °C to +75 °C

**Overmold:** Rite Flex 640F

**Seal:** Rubber

**Screw:** Stainless Steel

**Nut:** Stainless Steel

**Sealing Washer:** Rubber

**Wire:** 24 AWG

**DUST CAPS**

PORT	PART NO.	TYPE
-01	DCA-RPBE-01-01-P	Push-On/No Latch
-01	DCA-RPBE-01-01-L	Latching
-02	DCA-RPBE-02-01-L	

**Note:** Meets IP68 requirements for dust and waterproof sealing when mated or with dust cap.

RPCE	01	PLATING	WIRE LENGTH	END OPTION	C5E
-E	-00.25 = (0.25 m) 9.84"	-D = Double Ended	-00.50 = (0.50 m) 19.69"	-BC = Blunt Cut	

50 μ" (1.27 μm) Gold on contact, Nickel on shell

Standard lengths

**ALSO AVAILABLE (MOQ Required)**

- Other wire lengths Contact Samtec.