
Getting started with STM32 MCU Discovery Kits software development tools

Introduction

The STM32 Discovery boards are low-cost and easy-to-use development platforms used to quickly evaluate and start a development with an STM32 device.

This document provides guidelines for beginners on STM32 MCU Discovery Kits on how to build and run a sample application and allows them to build and debug their application. It has the following structure:

- The first chapter presents software and hardware requirements (some toolchains supporting the STM32 families, ST-LINK/V2 installation and firmware package presentation).
- The second chapter provides a step by step guideline on how to build and debug an application using some toolchains:
 - IAR Embedded Workbench[®] for ARM[®] (EWARM) by IAR systems[®]
 - Microcontroller Development Kit for ARM[®] (MDK-ARM) by Keil[®]
 - TrueSTUDIO[®] by Atollic[®]
 - System Workbench for STM32 (SW4STM32) by AC6

This manual does not cover all the topics relevant to software development environments, but it describes the first basic steps necessary to get started with the compilers and debuggers. It also offers links to the documents needed to fully understand every single step.

Contents

- 1 System requirements 5**
 - 1.1 IDEs supporting STM32 families 6
 - 1.2 ST-LINK/V2 installation 7
 - 1.3 Firmware package 8

- 2 Executing and debugging firmware using the software toolchains ... 9**
 - 2.1 EWARM toolchain 9
 - 2.2 MDK-ARM toolchain11
 - 2.3 TrueSTUDIO toolchain 12
 - 2.4 SW4STM32 toolchain 15

- 3 Revision history 18**

List of tables

Table 1. Most used integrated development environments 6
Table 2. Document revision history 18

List of figures

Figure 1. Hardware environment 5
Figure 2. Firmware package content 8
Figure 3. IAR embedded workbench IDE 9
Figure 4. EWARM project successfully compiled. 9
Figure 5. Download and Debug button 10
Figure 6. IAR embedded workbench debugger screen 10
Figure 7. Go button 10
Figure 8. uVision5 IDE 11
Figure 9. MDK-ARM project successfully compiled 11
Figure 10. Start/Stop debug session button. 11
Figure 11. MDK-ARM debugger screen. 12
Figure 12. Run button 12
Figure 13. TrueSTUDIO workspace launcher dialog box 12
Figure 14. Atollic TrueSTUDIO import source select dialog box 13
Figure 15. Atollic TrueSTUDIO import projects dialog box 13
Figure 16. TrueSTUDIO project successfully compiled 14
Figure 17. TrueSTUDIO debug window. 14
Figure 18. SW4STM32 workspace launcher dialog box 15
Figure 19. SW4STM32 import source select dialog box 15
Figure 20. SW4STM32 import projects dialog box 16
Figure 21. SW4STM32 project successfully compiled. 16
Figure 22. SW4STM32 debug window 17

1 System requirements

Before running the application, the user must:

1. Install the preferred Integrated Development Environment (IDE)
2. The ST-LINK/V2 driver is installed automatically. In case of problem, the user can install it manually from the toolchains install directory (further details are available in [Section 1.2: ST-LINK/V2 installation](#)).

Note: This step is not needed for STM32VLDISCOVERY since it embeds an ST-LINK (not an ST-LINK/V2) which does not require a driver installation.

3. Download the STM32 Discovery firmware from the STMicroelectronics website at www.st.com.
4. Establish the connection with the STM32 Discovery board as shown hereafter. In [Figure 1](#), the STM32F072 Discovery board is chosen as an example.

Figure 1. Hardware environment



The steps numbered above are detailed in the coming sections.

The minimum requirements to run and develop any firmware application on the STM32 Discovery board are:

- Windows® OS (XP, 7, 8) or Linux 64-bit or Mac OS® X
- *USB type A to Mini-B* cable, used to power the STM32 Discovery board (through USB connector CN1) from the host PC and connect to the embedded ST-LINK/V2 for debugging and programming.

1.1 IDEs supporting STM32 families

The STM32 families of 32-bit ARM Cortex-M core-based microcontrollers are supported by a complete range of software tools.

It encompasses traditional integrated-development environments such as IDEs with C/C++ compilers and debuggers from major third-party companies, free versions of up to 64 KB of code (depending on partner) and completed with innovative tools from STMicroelectronics.

The following table includes general information about some integrated development environments as well as the versions supporting the STM32 products.

Table 1. Most used integrated development environments

Toolchain	Company	Compiler	Version	Information ⁽¹⁾
EWARM ⁽²⁾	IAR Systems	IAR C/C++	7.60.1 and later	www.iar.com – 30-day evaluation edition KickStart edition – 16 Ko limitation for Cortex M0
MDK-ARM ⁽²⁾	Keil	ARMCC	5.18a and later	www.keil.com – MDK-Lite – 32 Ko code size limitation
TrueSTUDIO ⁽²⁾	Atollic	GNUC	5.5.1 and later	www.atollic.com – 30 days professional version trial – 32 Ko limitation – 8 Ko on Cortex-M0 and Cortex-M1
SW4STM32 ⁽³⁾	AC6	GNUC	1.8 and later	www.openstm32.org No limitation

1. Register prior to downloading the toolchain.
2. On Windows only.
3. The SW4STM32 does not support ST-LINK. Consequently, STM32VLDISCOVERY can not be used with SW4STM32 software toolchain.

Information on the toolchain version supporting the STM32 devices is available on the toolchain release note at the third-party website.

1.2 ST-LINK/V2 installation

All the STM32 Discovery boards include the ST-LINK/V2 embedded debug tool interface. This interface requires to install the ST-LINK/V2 dedicated USB driver. The STM32 Discovery boards include an ST-LINK/V2 embedded debug tool interface that is supported by the following software toolchains:

- IAR Embedded Workbench for ARM (EWARM)

The toolchain is installed by default in the *C:\Program Files\IAR Systems\Embedded Workbench x.x* directory on the PC local hard disk.

After installing the EWARM, the user should install the ST-LINK/V2 driver by running the *ST-Link_V2_USB.exe* from *IAR_INSTALL_DIRECTORY\Embedded Workbench x.x\arm\drivers\ST-Link \ST-Link_V2_USBdriver.exe*.

- RealView Microcontroller Development Kit for ARM (MDK-ARM) by Keil toolchain

The toolchain is installed by default in the *C:\Keil* directory on the PC local hard disk; the installer creates a start menu μ Vision5 shortcut.

When connecting the ST-LINK/V2 tool, the PC detects the new hardware and asks to install the ST-LINK_V2_USB driver. The “Found New Hardware wizard” appears and guides the user through the steps needed to install the driver from the recommended location.

- Atollic TrueSTUDIO STM32

The toolchain is installed by default in the *C:\Program Files\Atollic* directory on the PC local hard disk.

- AC6 SW4STM32 STM32

The toolchain is installed by default in the *C:\Program Files\AC6* directory on the PC local hard disk.

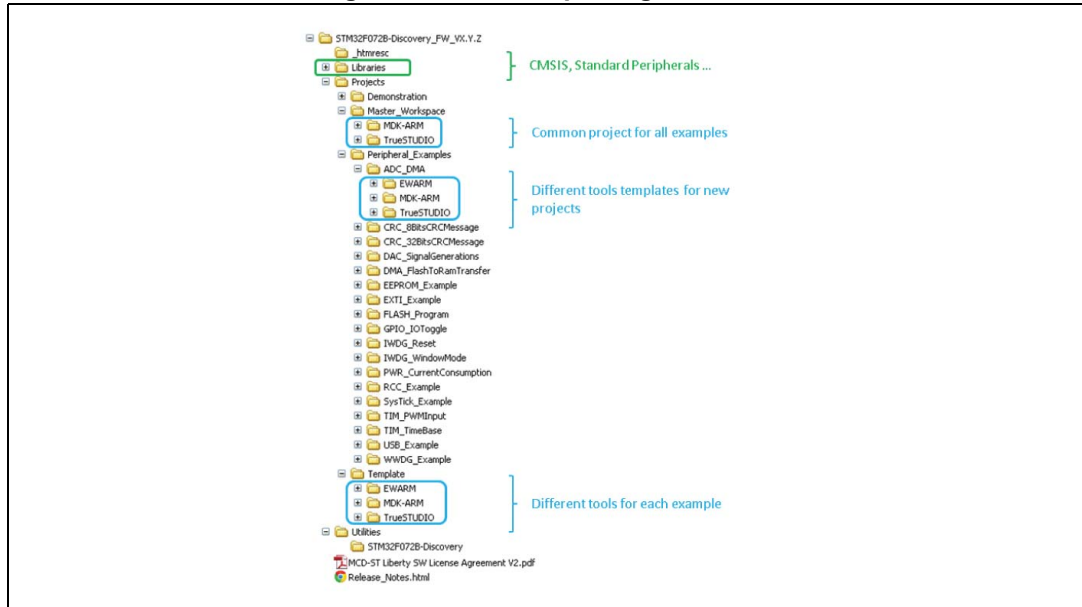
The *ST-Link_V2_USB.exe* is installed automatically when installing the software toolchain.

Note: The embedded ST-LINK/V2 only supports the SWD interface for STM32 devices.

1.3 Firmware package

The STM32 Discovery firmware applications, demonstration and IPs examples are provided in one single package and supplied in one single .zip file. The extraction of the .zip file generates the folder STM32-Discovery_FW_VX.Y.Z, which contains the subfolders shown in [Figure 2](#) where the STM32 F072B-Discovery_FW_VX.Y.Z is chosen as an example.

Figure 2. Firmware package content



Template project is a pre-configured project with empty main function to be customized by the user. This is helpful to start creating an application based on the peripherals drivers.

Example project includes the toolchain projects for each peripheral example ready to be run.

Applications includes set of applications ready to be run.

Demonstration includes the demonstration firmware ready to be run.

2 Executing and debugging firmware using the software toolchains

The user can follow the procedure described below to compile/link and execute an existing EWARM project. The following steps can be applied to an already existing example, demonstration or template project available at STM32 Discovery firmware package available on STMicroelectronics website. In this manual the STM32 F072B-Discovery_FW_VX.Y.Z is used as an example.

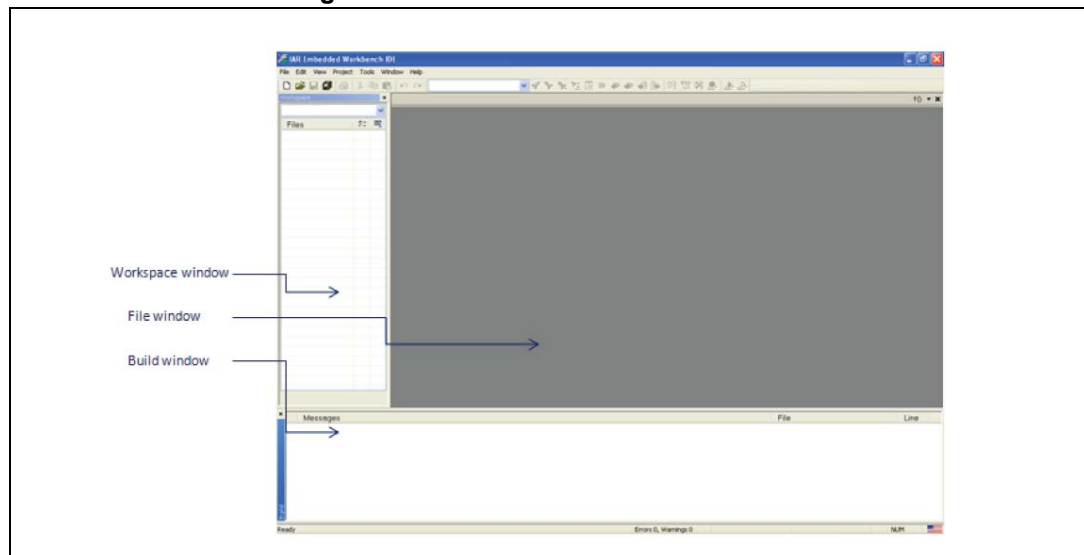
The user should go through the firmware/readme.txt file which contains the firmware description and hardware/software requirements.

2.1 EWARM toolchain

1. Open the IAR Embedded Workbench for ARM (EWARM).

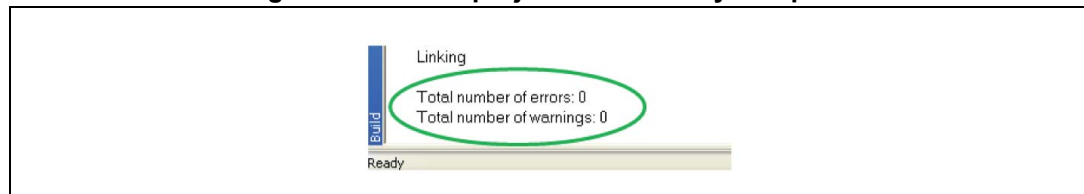
Figure 3 shows the basic names of the windows referred to in this document.

Figure 3. IAR embedded workbench IDE



2. In the **File** menu, select **Open** and click **Workspace** to display the **Open Workspace** dialog box. Browse to select either an example or demonstration or template workspace file and click **Open** to launch it in the Project window.
3. In the **Project** menu, select **Rebuild All** to compile the project
4. If the project is successfully compiled, the window shown in Figure 4 is displayed.

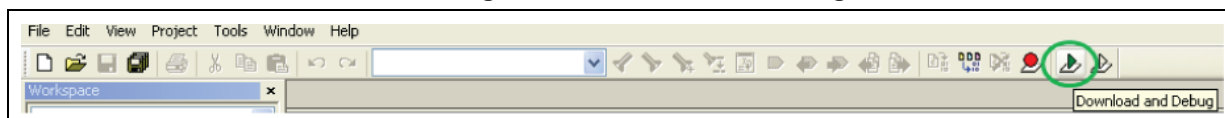
Figure 4. EWARM project successfully compiled



To change the project settings (Include and preprocessor defines), the user should go through project options:

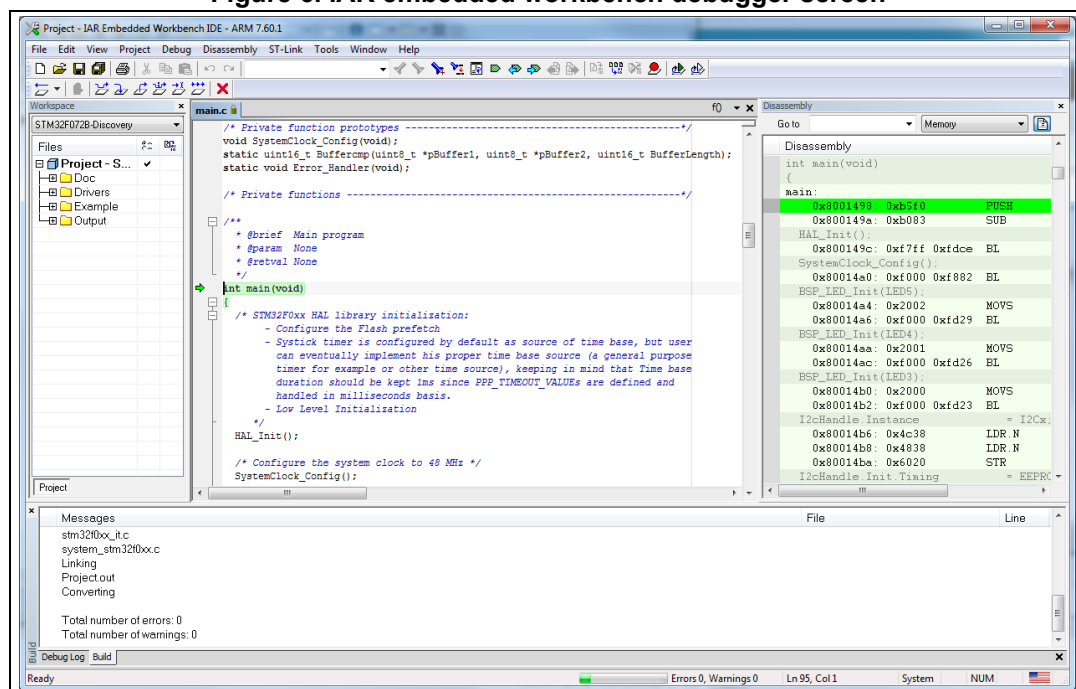
- For 'Include directories', select **Project>Options...>C/C++ compiler>**
 - For pre-processor, define **Project>Options...>C/C++ compiler>pre-processor>**
5. In the IAR Embedded Workbench IDE, from the **Project** menu, select **Download and Debug** or alternatively, click on the **Download and Debug** button the in tool bar, to program the Flash memory and start debugging.

Figure 5. Download and Debug button



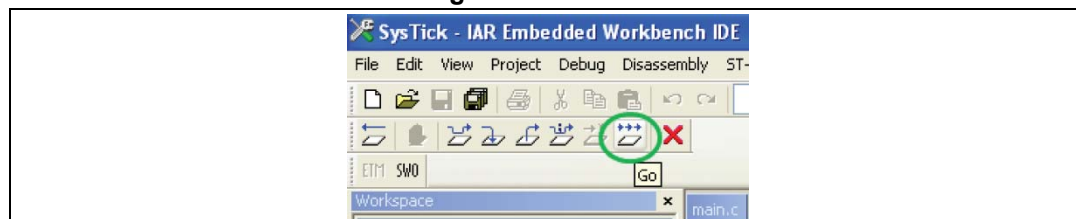
The debugger in the IAR Embedded Workbench can be used to debug the source code at C and assembly levels, set breakpoints, monitor individual variables and watch events during the code execution.

Figure 6. IAR embedded workbench debugger screen



To run the application, from the **Debug** menu, select **Go**. Alternatively, click on the **Go** button in the toolbar to run the application.

Figure 7. Go button

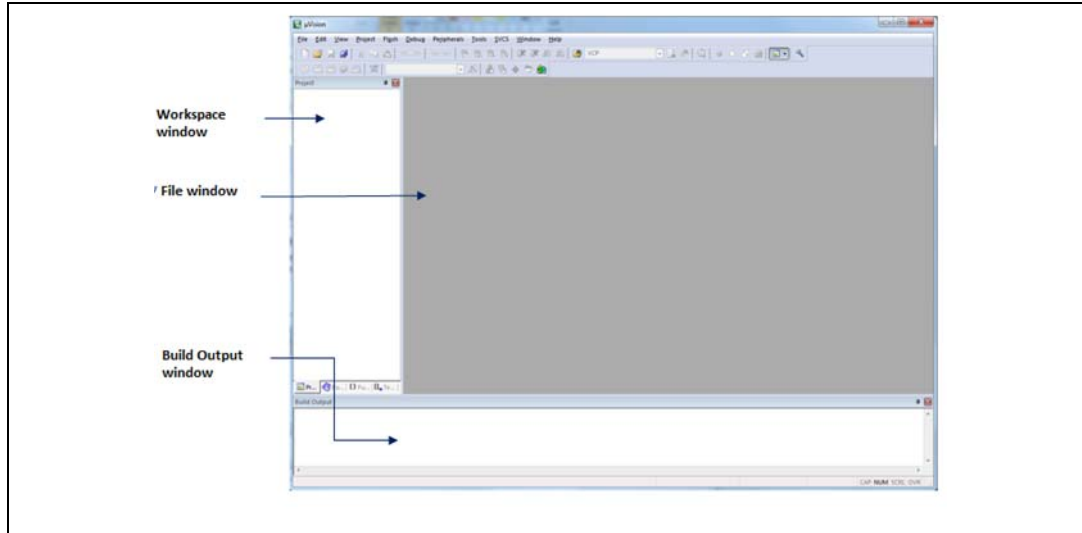


2.2 MDK-ARM toolchain

1. Open Keil MDK-ARM Microcontroller Kit,

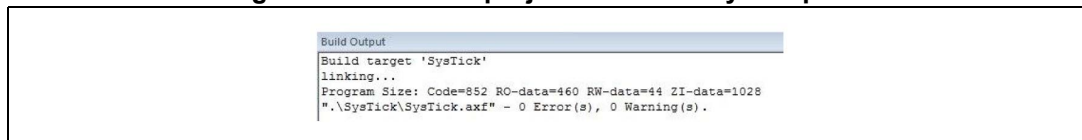
Figure 8 shows the basic names of the "Keil uVision5" windows referred to in this document.

Figure 8. uVision5 IDE



2. In the **Project** menu, select **Open Project**. Browse to select either an example or demonstration or template project file and click **Open** to launch it in the Project window.
3. In the **Project** menu, select **Rebuild All** target files to compile the project
4. If the project is successfully compiled, the window shown in *Figure 9* is displayed.

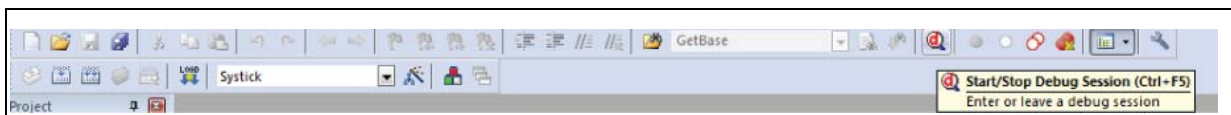
Figure 9. MDK-ARM project successfully compiled



If the user needs to change the project settings (Include and preprocessor defines), the user should go through the project options:

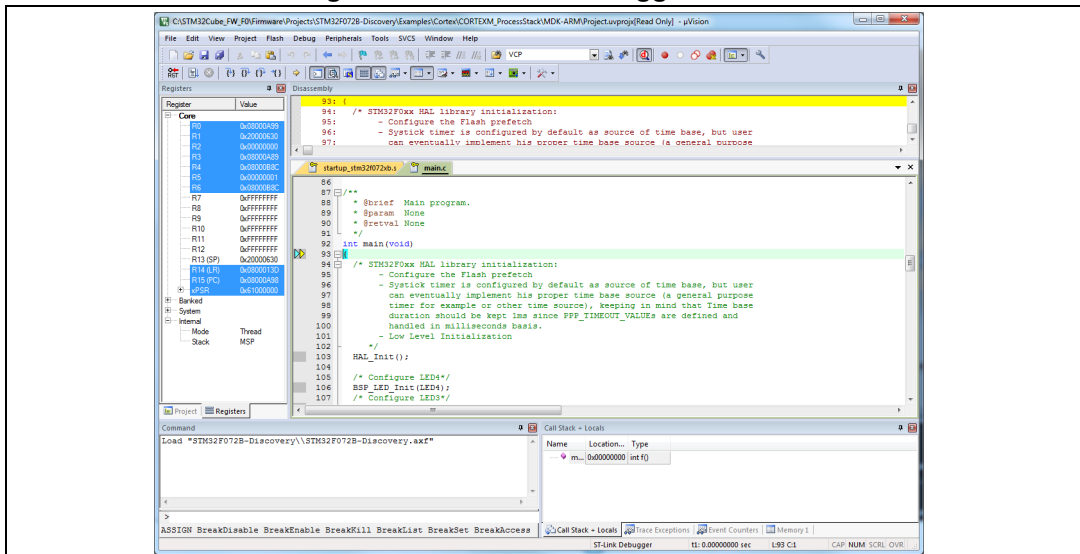
- For 'Include directories', select **Project>Options for Target > C/C++ > Include Paths**
 - For pre-processor definition **Project>Options for Target > C/C++ > Preprocessor symbols > Define**
5. In the MDK-ARM IDE, from the **Debug** menu, select **Start/Stop Debug Session** or, alternatively, click the **Start/Stop Debug Session** button in the tool bar to program the Flash memory and begin debugging.

Figure 10. Start/Stop debug session button



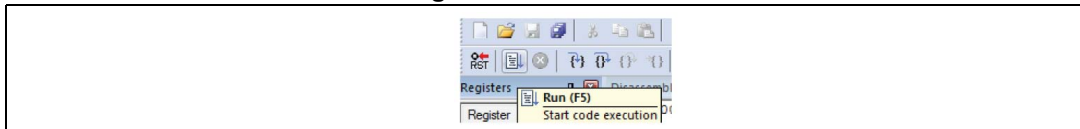
6. The debugger in the MDK-ARM can be used to debug source code at C and assembly levels, set breakpoints, monitor individual variables and watch events during the code execution.

Figure 11. MDK-ARM debugger screen



To run the application, from the **Debug** menu, select **Run**. Alternatively, click the **Run** button in the toolbar to run the application.

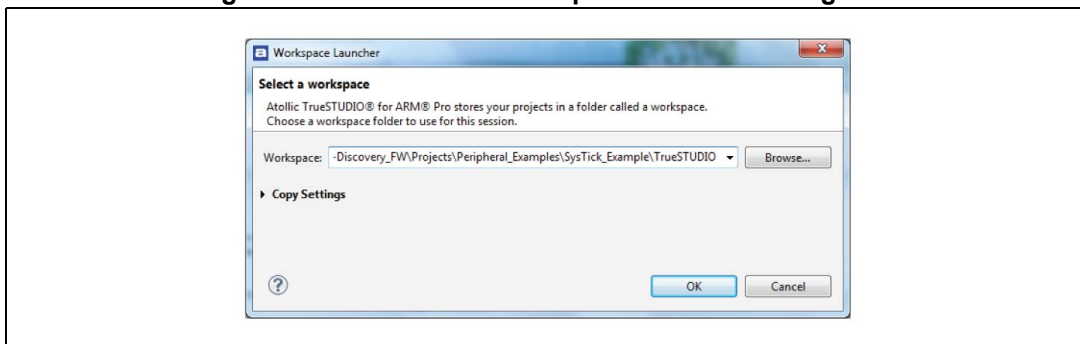
Figure 12. Run button



2.3 TrueSTUDIO toolchain

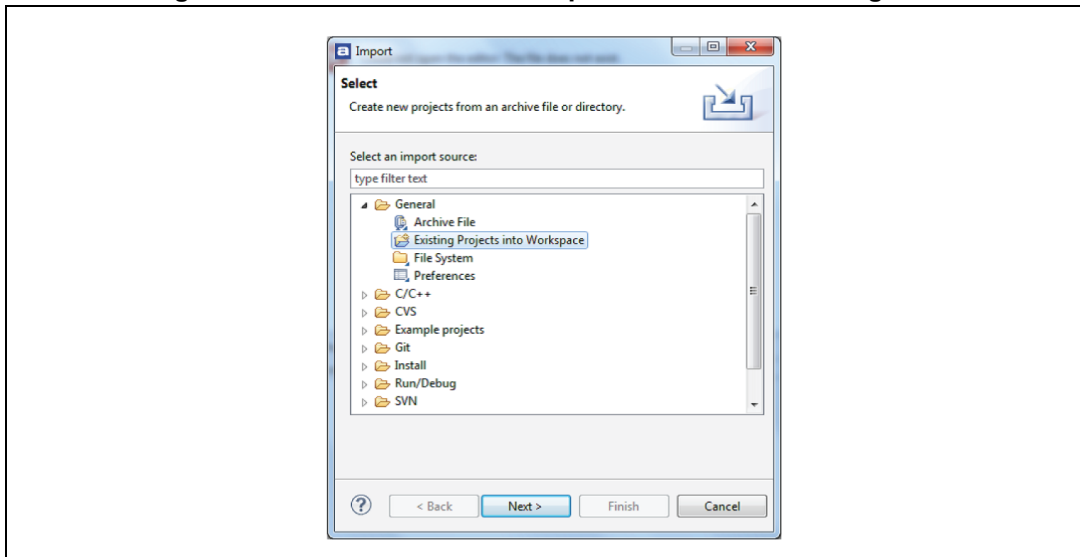
1. Open Atollic TrueSTUDIO for ARM product. The program launches and asks for the Workspace location.

Figure 13. TrueSTUDIO workspace launcher dialog box



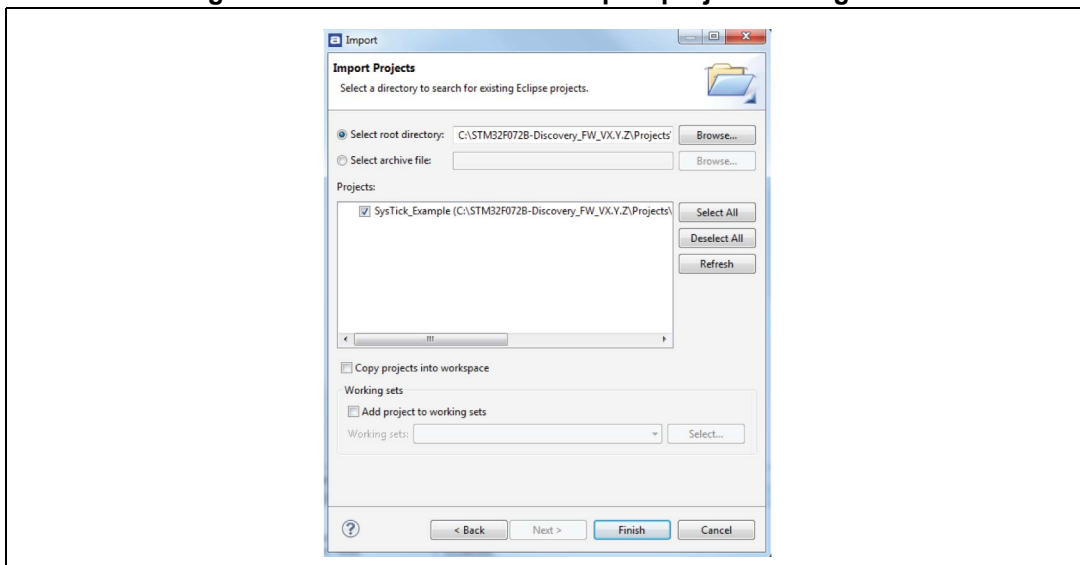
2. Browse to select a TrueSTUDIO workspace of either an example or demonstration or template workspace file and click **OK** to load it.
3. To load an existing project in the selected workspace, select **Import** from the **File** menu to display the **Import** dialog box.
4. In the Import window, open **General**, select **Existing Projects** into Workspace and click **Next**.

Figure 14. Atollic TrueSTUDIO import source select dialog box



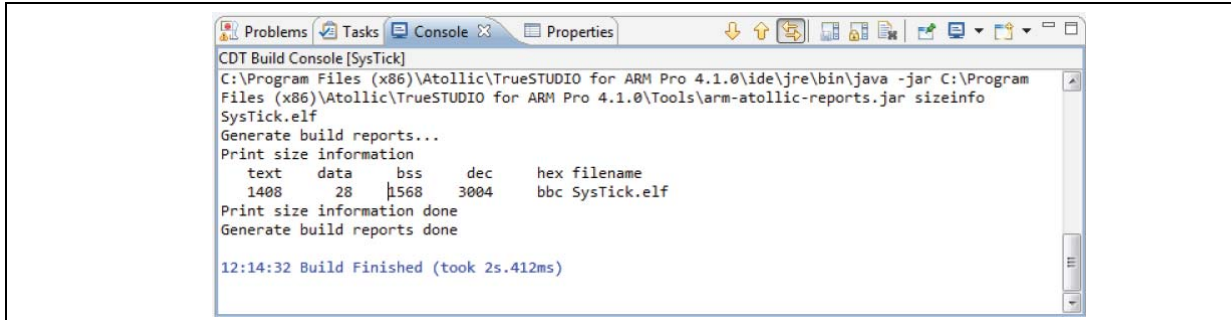
- 5. Click **Select root directory**, browse to the TrueSTUDIO workspace folder.

Figure 15. Atollic TrueSTUDIO import projects dialog box



6. In the **Projects** panel, select the project and click **Finish**.
7. In the **Project Explorer**, select the project, open the **Project** menu, and click **Build Project**.
8. If the project is successfully compiled, the following messages will be displayed on the Console window.

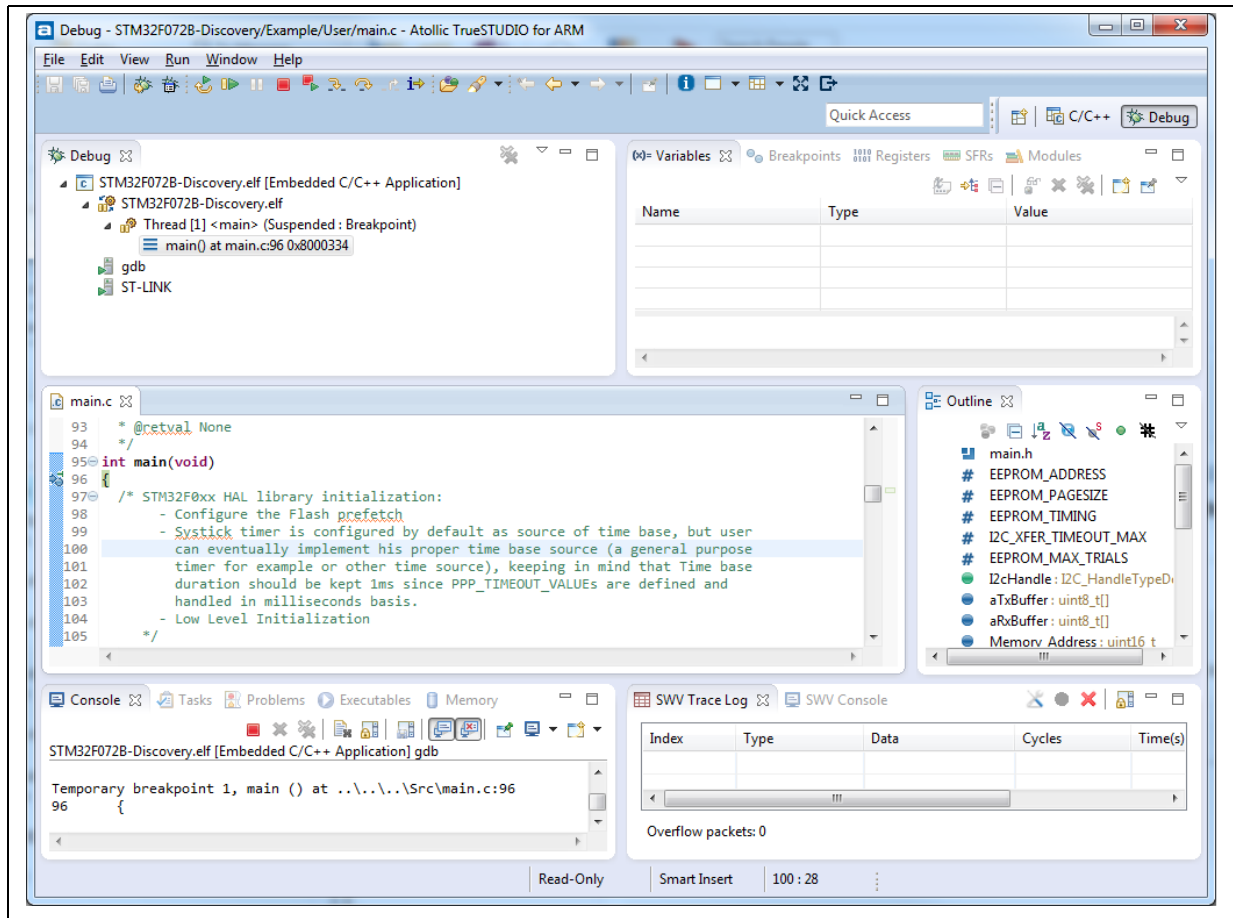
Figure 16. TrueSTUDIO project successfully compiled



If the user needs to change the project settings (Include directories and preprocessor defines), go through Project>Properties, select C/C++ Build>Settings from the left panel:

- For 'Include directories' **C Compiler>Directories>Include path**
 - For pre-processor defines **C Compiler>Symbols> Defined symbols**
9. To debug and run the application, the user should select the project In the Project Explorer and press F11 to start a debug session (see [Figure 17](#)).

Figure 17. TrueSTUDIO debug window



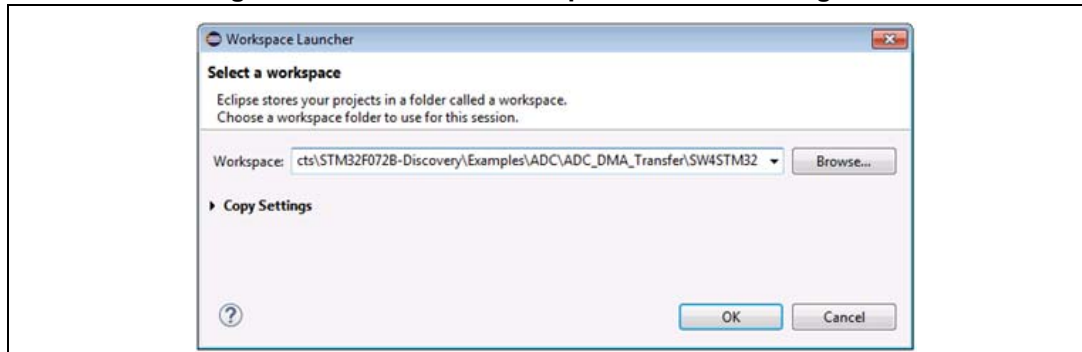
The debugger in the Atollic TrueSTUDIO can be used to debug source code at C and assembly levels, set breakpoints, monitor individual variables and watch events during the code execution.

To run the application, from the **Run** menu, select **Resume**, or alternatively click the **Resume** button in the toolbar.

2.4 SW4STM32 toolchain

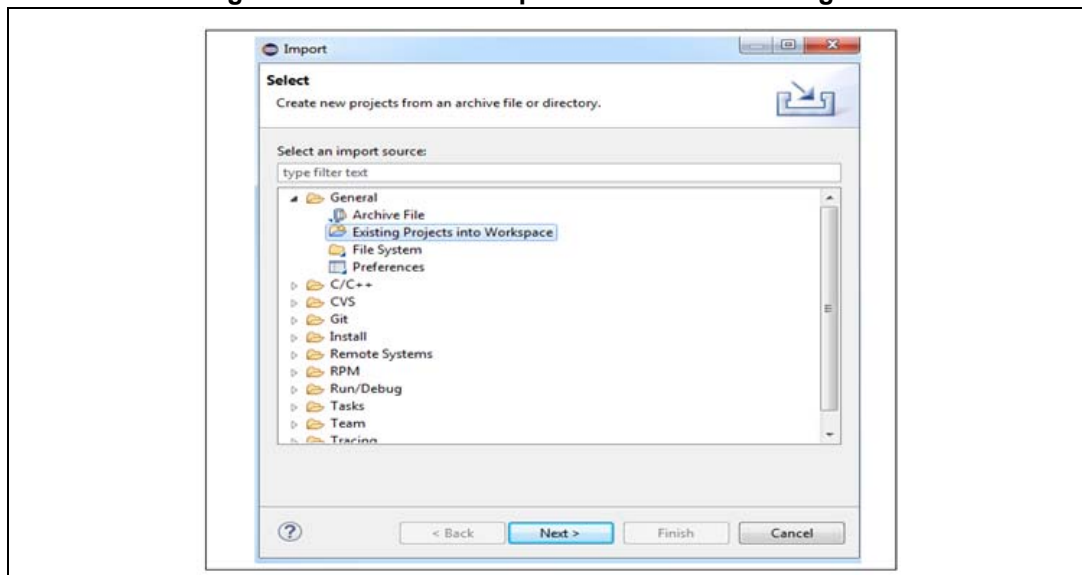
1. Open the AC6 SW4STM32 for ARM product. The program launches and prompts for the Workspace location.

Figure 18. SW4STM32 workspace launcher dialog box



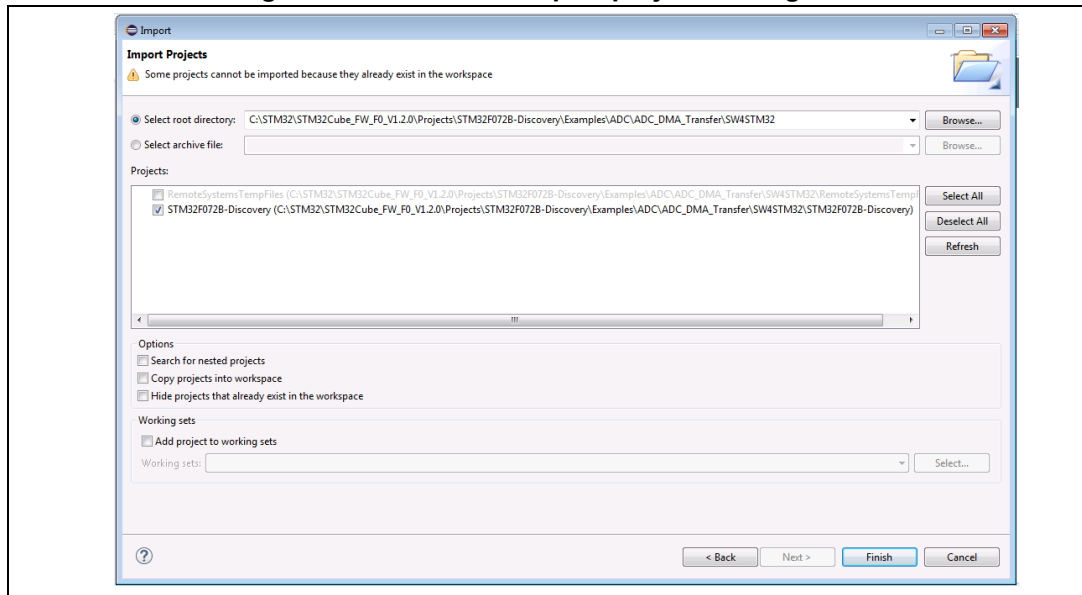
2. Browse to select a SW4STM32 workspace of either an example or demonstration or template workspace file and click **OK** to load it.
3. To load an existing project in the selected workspace, select **Import** from the **File** menu to display the **Import** dialog box.
4. In the **Import** window, open **General**, select **Existing Projects into Workspace** into Workspace and click **Next**.

Figure 19. SW4STM32 import source select dialog box



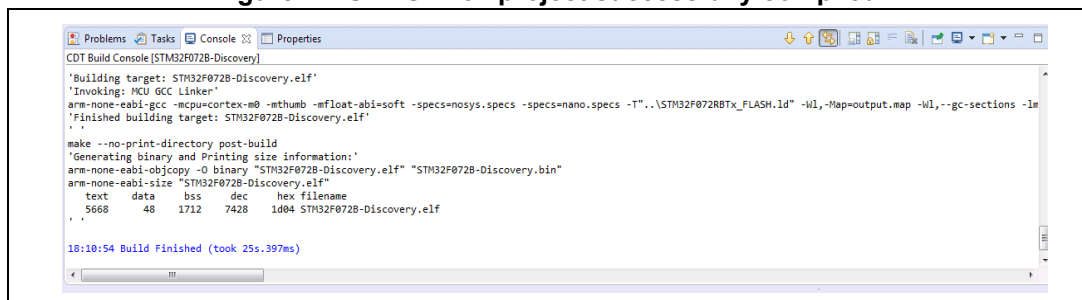
5. Click **Select root directory**, browse to the SW4STM32 workspace folder.

Figure 20. SW4STM32 import projects dialog box



6. In the **Projects** panel, select the project and click **Finish**.
7. In the **Project Explorer**, select the project, open the **Project** menu, and click **Build Project**.
8. If the project is successfully compiled, the following messages display on the Console window.

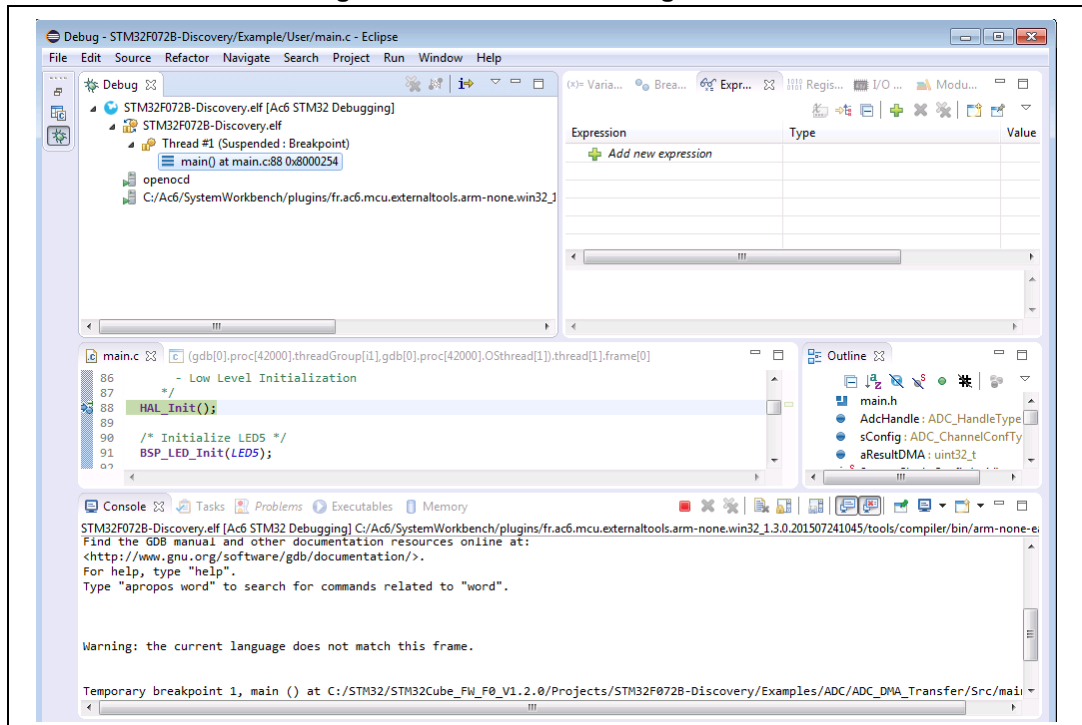
Figure 21. SW4STM32 project successfully compiled



If the user needs to change the project settings (Include directories and preprocessor defines), simply go through Project>Properties, select C/C++ Build>Settings from the left panel:

- For Include directories **C Compiler>Directories>Include path**
 - For pre-processor defines **C Compiler>Symbols> Defined symbols**
9. To debug and run the application, select the project In the **Project Explorer** and press F11 to start a debug session. See [Figure 22](#).

Figure 22. SW4STM32 debug window



The debugger in the AC6 SW4STM32 can be used to debug source code at the C and assembly levels, to set breakpoints, to monitor individual variables and to watch events during the code execution.

To run the application, from the **Run** menu, select **Resume**, or alternatively click the **Resume** button in the toolbar.

3 Revision history

Table 2. Document revision history

Date	Revision	Changes
20-May-2016	1	Initial release.

IMPORTANT NOTICE – PLEASE READ CAREFULLY

STMicroelectronics NV and its subsidiaries ("ST") reserve the right to make changes, corrections, enhancements, modifications, and improvements to ST products and/or to this document at any time without notice. Purchasers should obtain the latest relevant information on ST products before placing orders. ST products are sold pursuant to ST's terms and conditions of sale in place at the time of order acknowledgement.

Purchasers are solely responsible for the choice, selection, and use of ST products and ST assumes no liability for application assistance or the design of Purchasers' products.

No license, express or implied, to any intellectual property right is granted by ST herein.

Resale of ST products with provisions different from the information set forth herein shall void any warranty granted by ST for such product.

ST and the ST logo are trademarks of ST. All other product or service names are the property of their respective owners.

Information in this document supersedes and replaces information previously supplied in any prior versions of this document.

© 2016 STMicroelectronics – All rights reserved

