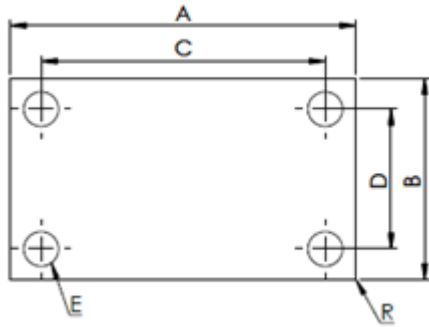


## Die Cut PCM SCR Darlington Module



## Features

Low thermal resistance  
Natural tack

## Applications

SCR Darlington Module

## Properties

- ◆ REACH Compliant
- ◆ RoHS Compliant

| Property                     | PC99AL           | Unit                  | Test Method |
|------------------------------|------------------|-----------------------|-------------|
| Colour                       | Grey             | -                     | Visual      |
| Thickness                    | 0.10             | mm                    | ASTM D374   |
| Total Mass Loss              | <0.4             | %                     | ASTM E595   |
| Working Temperature          | -30 to 125       | °C                    | -           |
| Operating Temperature        | 20 - 60          | °C                    | -           |
| Phase change Temperature     | 51               | °C                    | -           |
| Volume Resistance            | >10 <sup>2</sup> | Ohm-cm                | ASTM D257   |
| Dielectric Strength          | No Insulation    | VAC                   | ASTM D149   |
| Thermal Conductivity         | 1.5              | W/mK                  | ASTM D5470  |
| Thermal Impedance @ 1mil BLT | 0.23             | °C in <sup>2</sup> /W | ASTM D5470  |
| Thermal impedance @ 2mil BLT | 0.12             | °C in <sup>2</sup> /W | ASTM D5470  |
| Thermal impedance @ 3mil BLT | 0.10             | °C in <sup>2</sup> /W | ASTM D5470  |
| Flammability Rating          | V-0              | -                     | UL94        |

| Dimensions / mm |      |       |      |     |   |   | Ordering part number |
|-----------------|------|-------|------|-----|---|---|----------------------|
| A               | B    | C     | D    | E   | F | G |                      |
| 93              | 50   | 80.00 | 38.1 | 6   |   |   | DC0040/01 - XXX - T  |
| 94              | 86.1 | 80.00 | 73.9 | 5.6 |   |   | DC0040/02 - XXX - T  |
| 95.00           | 62   | 80    | 48   | 6   |   |   | DC0040/03 - XXX - T  |
| 98              | 64   | 63    | 52.1 | 6   |   |   | DC0040/04 - XXX - T  |
| 102.1           | 91   | 80    | 73.9 | 6.4 |   |   | DC0040/05 - XXX - T  |
| 108             | 62   | 93    | 48   | 6.4 |   |   | DC0040/06 - XXX - T  |
| 113             | 90   | 93    | 70.1 | 6.4 |   |   | DC0040/07 - XXX - T  |
| 114             | 114  | 93    | 93   | 6.4 |   |   | DC0040/08 - XXX - T  |
| 139.7           | 94   | 80    | 80   | 8.3 |   |   | DC0040/09 - XXX - T  |
| 160             | 76.7 | 80    | 62.7 | 6.8 |   |   | DC0040/10 - XXX - T  |
| 190.5           | 94   | 80    | 80   | 6.8 |   |   | DC0040/11 - XXX - T  |