

NH-Sicherung, SEV G2



Description

- Characteristic gG
- According to IEC 269
- According to EN 60269
- Selectivity 1:1.6
- Removal tags energized
- Dimensions according to SNV 24482

Weblinks

[pdf datasheet](#), [html-datasheet](#), [CE declaration of conformity](#), [RoHS](#), [REACH](#), [CAD-Drawings](#), [Detailed request for product](#)

Technical Data

Rated Current In	40- 250A
Rated Voltage	500VAC
Breaking Capacity	120kA
Rated Power Operating Frequency fe	50Hz

Basic Design

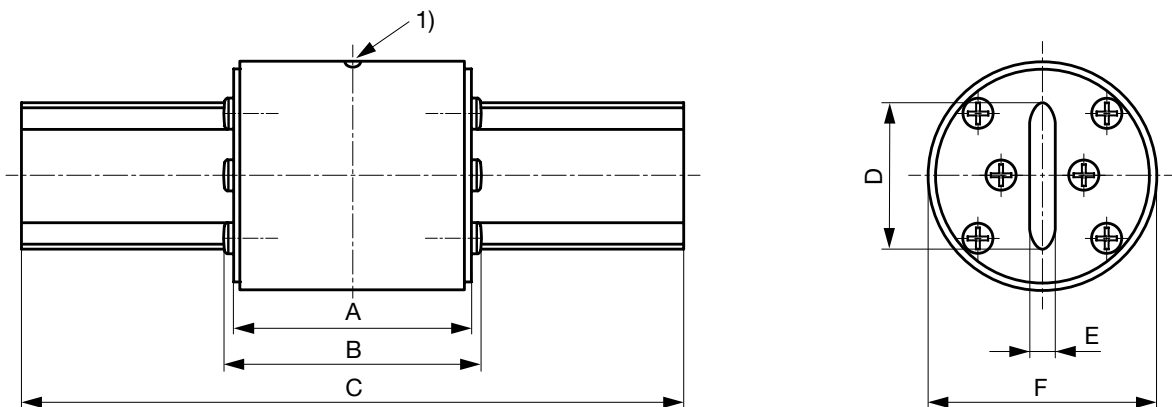
Insulator	Ceramic
Metal components	corrosion-resistant (rustproof)

Detailed information on product approvals, code requirements, usage instructions and detailed test conditions can be looked up in [General Product Information](#)

Power Dissipation (Watt) operating temperature max.

The power dissipation is the so called power loss at rated current load and operation temperature acc. VDE 0636 . It is to be measured in Watt at AC condition. The voltage tap is to be assured that the power dissipation of the blade contacts are included. This means the measure contact need to be applied at the ends of the blade contacts. The standard VDE 0636 part 1 and 2 requires that following maximal permissible power losses are not exceeded.

Dimension

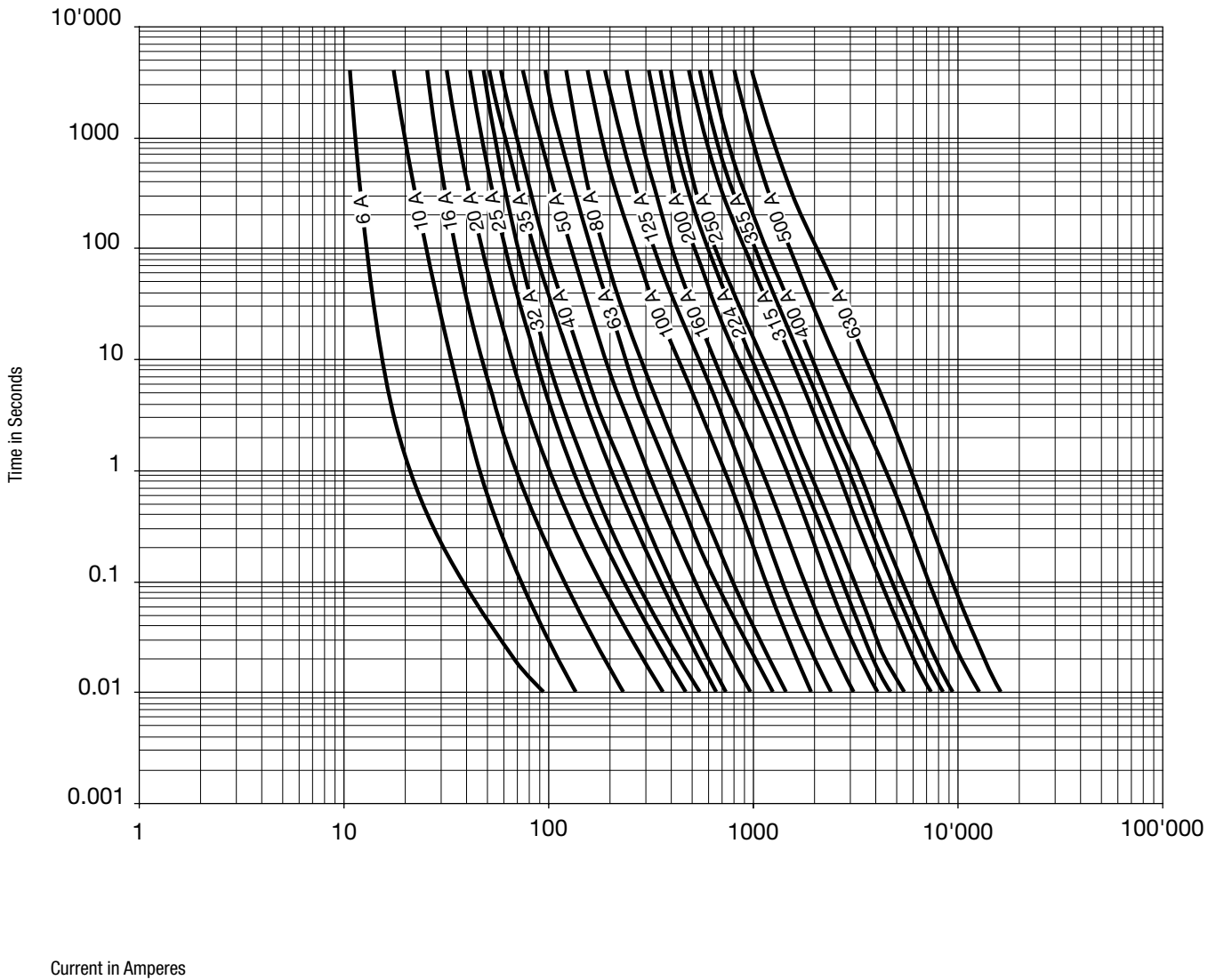


SEV	A	B	C	D	E	F
2	53	58	134	25	5	45
4	61	65	162	35	6	55
6	66	70	188	42	8	70

1) Indicator

Time-Current-Curves

SEV G2 - G6



All Variants

Rated current [A]	Style [Compact]	Power Loss [W]	Order Number	E-No
40	-	-	1301.2201	840110149
50	-	-	1301.2202	840110159
63	-	-	1301.2203	840110179
80	-	-	1301.2204	840110199
100	-	-	1301.2205	840110209
125	-	-	1301.2206	840110219
160	-	-	1301.2207	840110239
200	-	-	1301.2208	840110249
250	-	-	1301.2209	840110269

Most Popular.

Rated current	Style	Power Loss	Order Number	E-No
[A]	[Compact]	[W]		

Availability for all products can be searched real-time:<http://www.schurter.com/en/Stock-Check/Stock-Check-SCHURTER>
