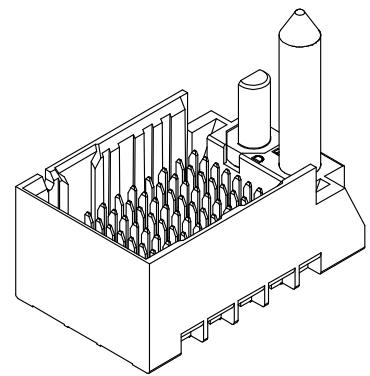


- NOTES:
- MATERIALS: HOUSING - LIQUID CRYSTAL POLYMER (LCP) GLASS-FILLED, UL94V-0
TERMINALS - HIGH PERFORMANCE COPPER ALLOY
 - FINISH: 30μ INCH MIN GOLD IN CONTACT AREA.
SELECTIVE MATTE TIN ON PCB TAILS, NICKEL OVERALL.
 - REFER TO MOLEX PRODUCT SPECIFICATION PS-170540-999 FOR PERFORMANCE SPECIFICATIONS AND ADDITIONAL PCB INFORMATION.
 - THIS PART CONFORMS TO CLASS B REQUIREMENTS OF MOLEX COSMETIC SPEC PS-45499-002.
 - "THESE DIMENSIONS REPRESENT THE AREA NEEDED TO ACCOMMODATE CONNECTOR INSERTION AND REPAIR ON THE PC BOARD. THIS IS REFERRED TO AS THE "CONNECTOR KEEP OUT ZONE" AND DOES NOT REPRESENT THE ACTUAL PERIMETER OF THE CONNECTOR. WHEN LAYING OUT A PC BOARD FOR CONNECTORS STACKED TOGETHER, USE A 1.9mm PROGRESSION."
 - PACKAGE PER: PK-70873-758.
 - SEE SHEETS 2 & 3 FOR PART NUMBERS AND BOARD RELATIONSHIPS.
 - FOR GROUNDED GUIDE PINS USE $\phi 3.56 \pm 0.08$ (PTH) $\phi 3.66$ (DRILL) & $\phi 6.5$ (PAD).
 - REFER TO MOLEX PCB ROUTING GUIDE AS-76060-990 FOR ANTIPAD AND ROUTING RECOMMENDATIONS.
 - CONNECTORS SUPPLIED WITH A 2-56 UNC-2A SCREW, MOLEX P/N 73774-1000.
 - MINIMUM CIRCUIT BOARD THICKNESS: 1.0mm
 - KEEP OUT ZONE FOR BP HOUSING LENGTH INCLUDES AN ADDITIONAL 1.0mm TO ACCOMMODATE FOR SPACE REQUIRED BY DC FRONT HOUSING.

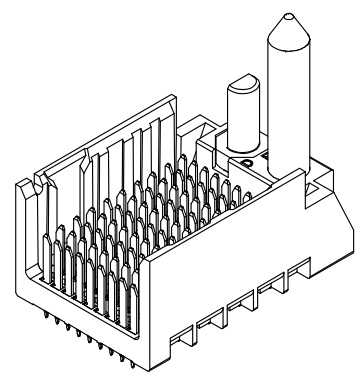
ADD SCREW P/N EC NO: UCP2015-0242 DRW:DMORGAN 2014/07/21 CHK:DMOFF 2014/07/21 APPR:SMILLER 2014/08/04	DESCRIPTION REV:	QUALITY SYMBOLS	GENERAL TOLERANCES (UNLESS SPECIFIED)	DIMENSION STYLE MM ONLY	SCALE 4:1	DESIGN UNITS METRIC	THIRD ANGLE PROJECTION																								
		$\nabla = 0$ $\nabla = 0$ $\nabla = 0$	<table border="1"> <thead> <tr> <th></th> <th>mm</th> <th>INCH</th> </tr> </thead> <tbody> <tr> <td>4 PLACES</td> <td>± ---</td> <td>± ---</td> </tr> <tr> <td>3 PLACES</td> <td>± ---</td> <td>± ---</td> </tr> <tr> <td>2 PLACES</td> <td>± 0.13</td> <td>± ---</td> </tr> <tr> <td>1 PLACE</td> <td>± 0.25</td> <td>± ---</td> </tr> <tr> <td>0 PLACE</td> <td>± ---</td> <td>± ---</td> </tr> </tbody> </table>		mm	INCH	4 PLACES	± ---	± ---	3 PLACES	± ---	± ---	2 PLACES	± 0.13	± ---	1 PLACE	± 0.25	± ---	0 PLACE	± ---	± ---	<table border="1"> <thead> <tr> <th>DATE</th> <th>BY</th> </tr> </thead> <tbody> <tr> <td>2010/05/12</td> <td>JB INGHAM</td> </tr> <tr> <td>2010/05/12</td> <td>JLAURX</td> </tr> <tr> <td>2013/01/28</td> <td>JLAURX</td> </tr> </tbody> </table>	DATE	BY	2010/05/12	JB INGHAM	2010/05/12	JLAURX	2013/01/28	JLAURX	TITLE IMPACT 3-PAIR 85-OHM RIGHT GUIDED BACKPLANE SALES ASSEMBLY DRAWING
	mm	INCH																													
4 PLACES	± ---	± ---																													
3 PLACES	± ---	± ---																													
2 PLACES	± 0.13	± ---																													
1 PLACE	± 0.25	± ---																													
0 PLACE	± ---	± ---																													
DATE	BY																														
2010/05/12	JB INGHAM																														
2010/05/12	JLAURX																														
2013/01/28	JLAURX																														
DRAFT WHERE APPLICABLE MUST REMAIN WITHIN DIMENSIONS		MATERIAL NO. SEE CHART	THIS DRAWING CONTAINS INFORMATION THAT IS PROPRIETARY TO MOLEX. INCORPORATED AND SHOULD NOT BE USED WITHOUT WRITTEN PERMISSION																												

PART NUMBER CHART

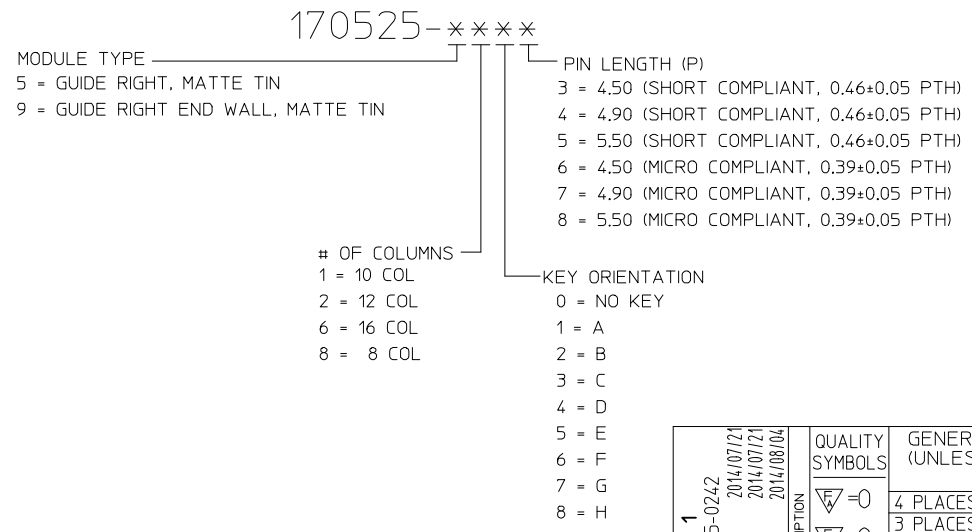
MATERIAL NUMBER	# OF COLUMNS	# OF DIFF PAIR	DIM "A"	DIM "B"	GUIDE RIGHT END WALL OPTION
170525-98**	8	24	23.1	13.30	
170525-91**	10	30	26.9	17.10	
170525-92**	12	36	30.7	20.90	
170525-96**	16	48	38.3	28.50	



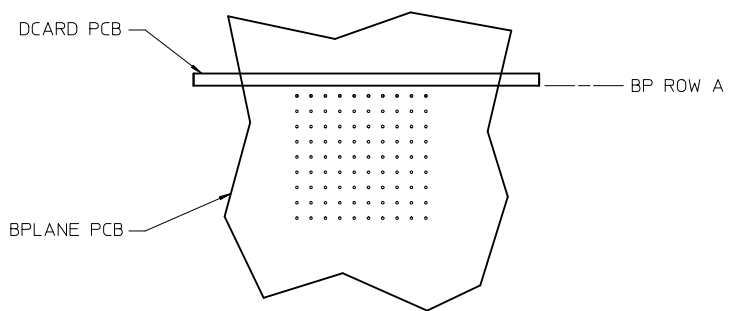
MATERIAL NUMBER	# OF COLUMNS	# OF DIFF PAIR	DIM "A"	DIM "B"	GUIDE RIGHT OPEN WALL OPTION
170525-58**	8	24	21.7	13.30	
170525-51**	10	30	25.5	17.10	
170525-52**	12	36	29.3	20.90	
170525-56**	16	48	36.9	28.50	



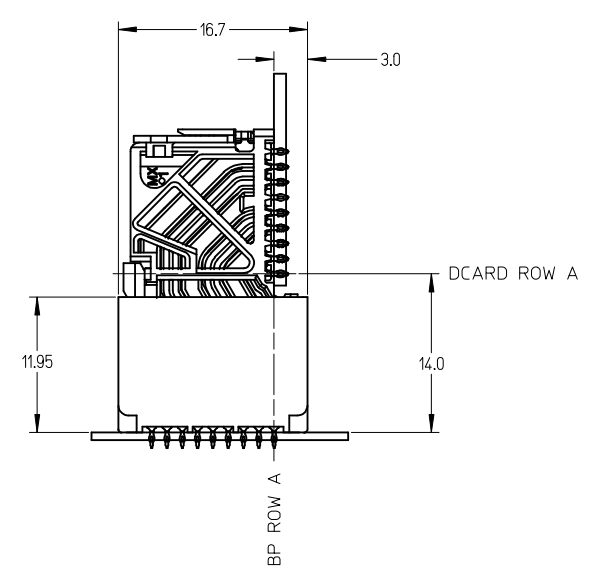
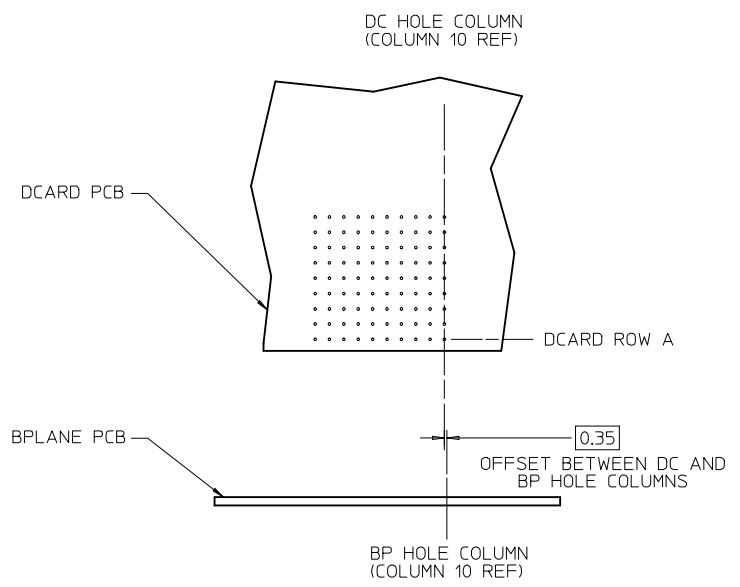
PART NUMBER LOGIC



SEE SHEET 1 EC NO: UCP2015-0242 DRWNG: MORGAN 2014/07/21 CHKD: MPOFF 2014/07/21 APPR: SMILLER 2014/08/04	QUALITY SYMBOLS	GENERAL TOLERANCES (UNLESS SPECIFIED)	DIMENSION STYLE MM ONLY	SCALE 2.5:1	DESIGN UNITS METRIC	THIRD ANGLE PROJECTION
	▽=0	4 PLACES ± --- ± ---	mm INCH	DRAWN BY JB INGHAM	DATE 2010/05/12	TITLE IMPACT 3-PAIR 85-OHM RIGHT GUIDED BACKPLANE SALES ASSEMBLY DRAWING
	▽=0	3 PLACES ± --- ± ---		CHECKED BY JLAURX	DATE 2010/05/12	
	▽=0	2 PLACES ± 0.13 ± ---		APPROVED BY JLAURX	DATE 2013/01/28	molex DOCUMENT NO. SD-170525-0003
▽=0	1 PLACE ± 0.25 ± ---		MATERIAL NO. SEE CHART		SHEET NO. 2 OF 3	
REV D2	DESCRIPTION	ANGULAR ±1/2°	DRAFT WHERE APPLICABLE MUST REMAIN WITHIN DIMENSIONS		THIS DRAWING CONTAINS INFORMATION THAT IS PROPRIETARY TO MOLEX INCORPORATED AND SHOULD NOT BE USED WITHOUT WRITTEN PERMISSION	



IMPACT 3 PAIR
BOARD RELATIONSHIPS



SEE SHEET 1 EC NO: UCP2015-0242 DRAWN:MORGAN 2014/07/21 CHKD:MPOFF 2014/07/21 APPR:SMILLER 2014/08/04	DESCRIPTION REV	QUALITY SYMBOLS	GENERAL TOLERANCES (UNLESS SPECIFIED)		DIMENSION STYLE MM ONLY	SCALE 3:1	DESIGN UNITS METRIC	THIRD ANGLE PROJECTION	
		▽=0	mm	INCH	DRAWN BY JB INGHAM	DATE 2010/05/12	TITLE IMPACT 3-PAIR 85-OHM RIGHT GUIDED BACKPLANE SALES ASSEMBLY DRAWING molex DOCUMENT NO. SD-170525-0003 SHEET NO. 3 OF 3		
		▽=0	4 PLACES ± ---	± ---	CHECKED BY JLAURX	DATE 2010/05/12			
		▽=0	3 PLACES ± ---	± ---	APPROVED BY JLAURX	DATE 2013/01/28			
▽=0	2 PLACES ± 0.13	± ---							
			1 PLACE ± 0.25	± ---					
			0 PLACE ± ---	± ---					
			ANGULAR ±1/2°		MATERIAL NO. SEE CHART				
			DRAFT WHERE APPLICABLE MUST REMAIN WITHIN DIMENSIONS		SIZE C				