

PART NUMBER	REV	TERMINATOR	FEED TYPE	DESCRIPTION
1528732-1	A	LEADMAKER	MECH POST FEED	CUTS CARRIER
1528732-2	A	BENCH	MECH PRE FEED	CUTS CARRIER
1528732-6	A	LEADMAKER	MECH POST FEED	CONTINUOUS CARRIER
7-1528732-1	A	LEADMAKER	MECH POST FEED	-1 AND SPARE PARTS
7-1528732-2	A	BENCH	MECH PRE FEED	-2 AND SPARE PARTS
7-1528732-6	A	LEADMAKER	MECH POST FEED	-6 AND SPARE PARTS
7-1528732-7	A	-	-	SPARE PARTS KIT

CRIMP	SIZE	TYPE	RANGE
WIRE	1.78 [0.070 IN]	F	0.75-0.85mm <sup>2</sup>
INSUL	3.81 [1.50 IN]	O	1.80-2.60 [0.071-.102 IN]

WIRE STRIP LENGTH	APPL INSTRUCTIONS
4.00-5.00 [1.57-.197 IN]	408-8322 & 408-8490

TERMINAL APPL SPEC	FEED
-	12.50 [0.492 IN]

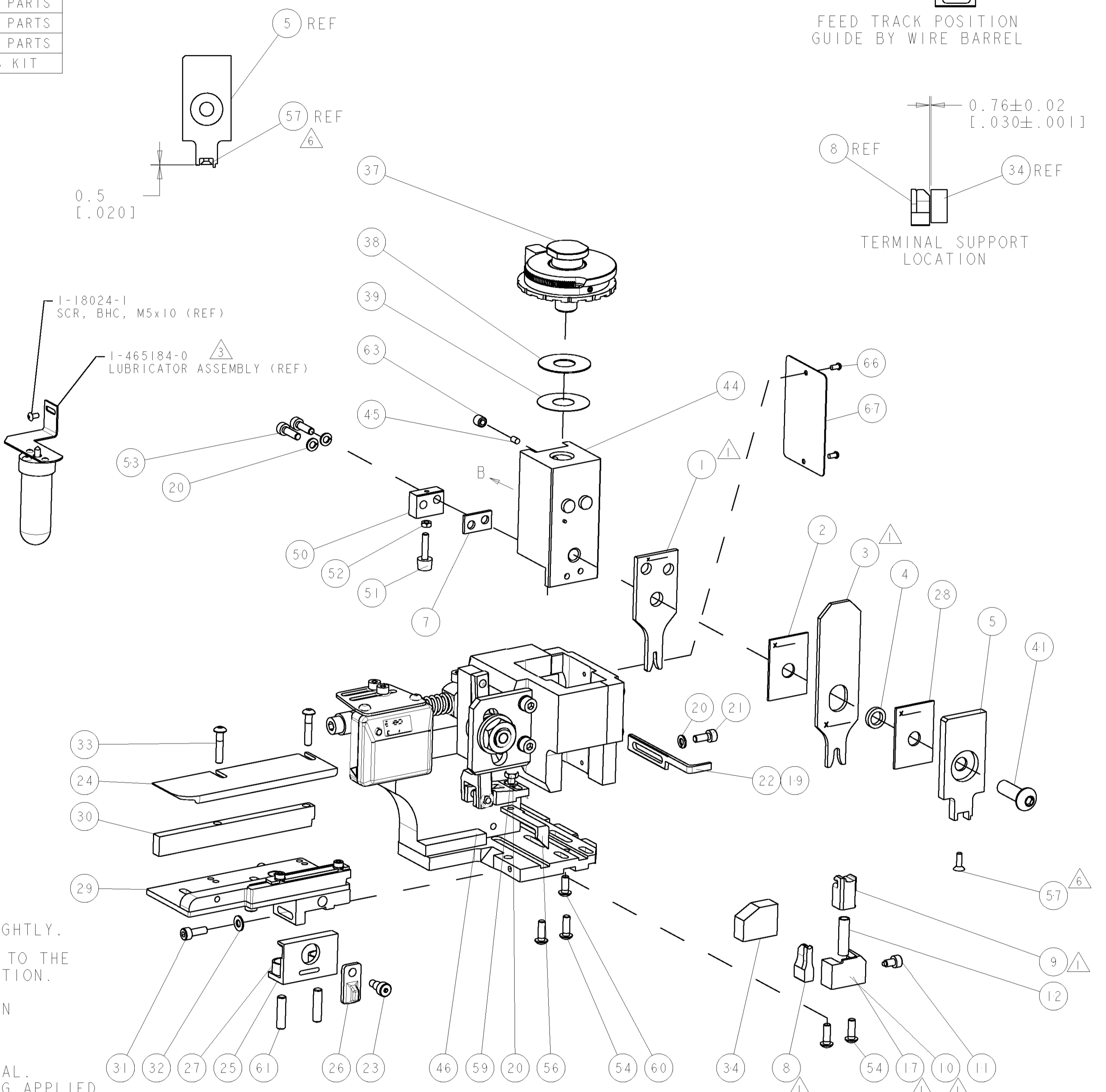
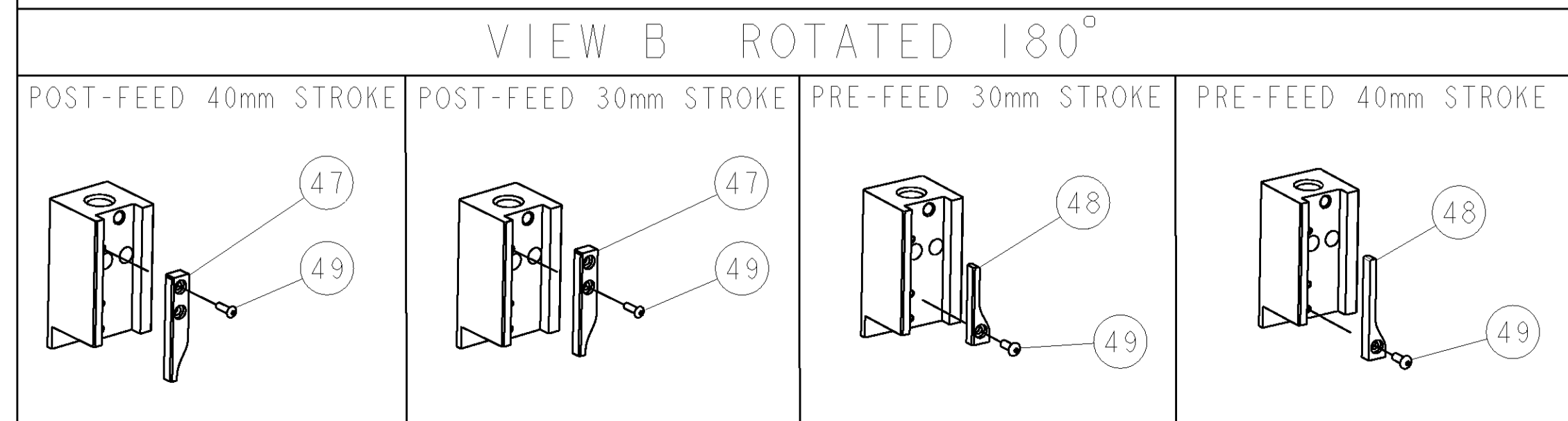
  

TYCO TERM PN	MANUF TERM PN	TYCO SEAL PN	MANUF SEAL PN
1670547-1	8240-4992	1670548-1	7165-0194

WIRE SIZE	CRIMP HEIGHT	REF SETTING
0.75mm <sup>2</sup>	1.14 ± 0.05 [0.045 ± 0.002 IN]	B 9

- △ RECOMMENDED SPARE PARTS.
- 2. GREASE RAM, CAM, CAM FOLLOWER AND FEED ROD LIGHTLY.
- △ CERTAIN TERMINALS REQUIRE LUBRICATION. REFER TO THE APPLICATOR INSTRUCTION SHEET FOR MORE INFORMATION.
- 4. LUBRICATE DAILY PER THE APPLICATOR INSTRUCTION SHEET SUPPLIED WITH THE APPLICATOR.
- △ THIS APPLICATOR APPLIES TERMINAL WITH A SEAL. INSULATION RANGE QUOTED IS THAT OF THE TERMINAL. WIRE INSULATION DIA IS DEPENDENT ON SEAL BEING APPLIED. SEAL PN 1670548-1 INS. DIA RANGE IS 1.6-2.4 [0.063-.094 IN].
- △ APPLY TORQ-SEAL IN ALLEN SOCKET TO FILL HOLE AFTER FLAT HD HAS BEEN ADJUSTED TO CORRECT HEIGHT AT QUALIFICATION. APPLY #1-23419-5 LOC-TITE TO THREADS.
- △ WIRE CRIMP DATA CALCULATED BY TYCO ELECTRONICS UK LTD.
- △ WIRE RANGE SHOWN IS THAT OF THE TERMINAL.



\* WARNING  
ON INSTALLATION, SET WIRE DISC TO LARGEST WIRE SIZE SETTING. USE OF SETTINGS BELOW MIN. REQUIRED CRIMP HEIGHT SETTING WILL CAUSE DAMAGE TO CRIMP TOOLING.

QTY	DESCRIPTION	ITEM NO
-	-	84
-	-	83
-	-	82
-	-	81
-	-	80
-	-	79
-	-	78
-	-	77
-	-	76
-	-	75
-	-	74
-77 -76 -72 -71 -6 -2 -1	PART NO	DESCRIPTION

SET UP GAGE 458637-3		LOC	DIST	REVISIONS			
A	66			REV	DATE	BY	APPD
				A	SEE ECO-06-027532	23NOV2006	LJL MC

QTY	DESCRIPTION	ITEM NO
-	-	73
-	-	72
-	-	71
-	-	70
-	-	69
-	-	68
-	-	67
-	-	66
-	-	65
-	-	64
-	-	63
-	-	62
-	-	61
-	-	60
-	-	59
-	-	58
-	-	57
-	-	56
-	-	55
-	-	54
-	-	53
-	-	52
-	-	51
-	-	50
-	-	49
-	-	48
-	-	47
-	-	46
-	-	45
-	-	44
-	-	43
-	-	42
-	-	41
-	-	40
-	-	39
-	-	38
-	-	37
-	-	36
-	-	35
-	-	34
-	-	33
-	-	32
-	-	31
-	-	30
-	-	29
-	-	28
-	-	27
-	-	26
-	-	25
-	-	24
-	-	23
-	-	22
-	-	21
-	-	20
-	-	19
-	-	18
-	-	17
-	-	16
-	-	15
-	-	14
-	-	13
-	-	12
-	-	11
-	-	10
-	-	9
-	-	8
-	-	7
-	-	6
-	-	5
-	-	4
-	-	3
-	-	2
-	-	1
-77 -76 -72 -71 -6 -2 -1	PART NO	DESCRIPTION

DIMENSIONS:	TOLERANCES UNLESS OTHERWISE SPECIFIED:
mm [IN]	0 PLC ±
	1 PLC ±
	2 PLC ±
	3 PLC ±
	4 PLC ±
	ANGLES ±

MATERIAL	FINISH
-	-

DATE	BY	APPD
10OCT2006	J LOFTHOUSE	
10OCT2006	M CLIFFORD	

NAME	SCALE	SHEET	OF	REV
FINE ADJUST SIDE FEED HDI APPLICATOR	3:5	1	1	A