

10

9

8

7

6

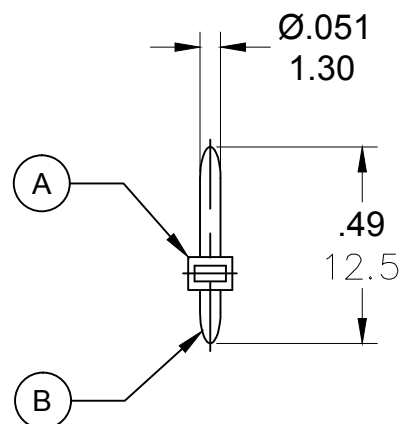
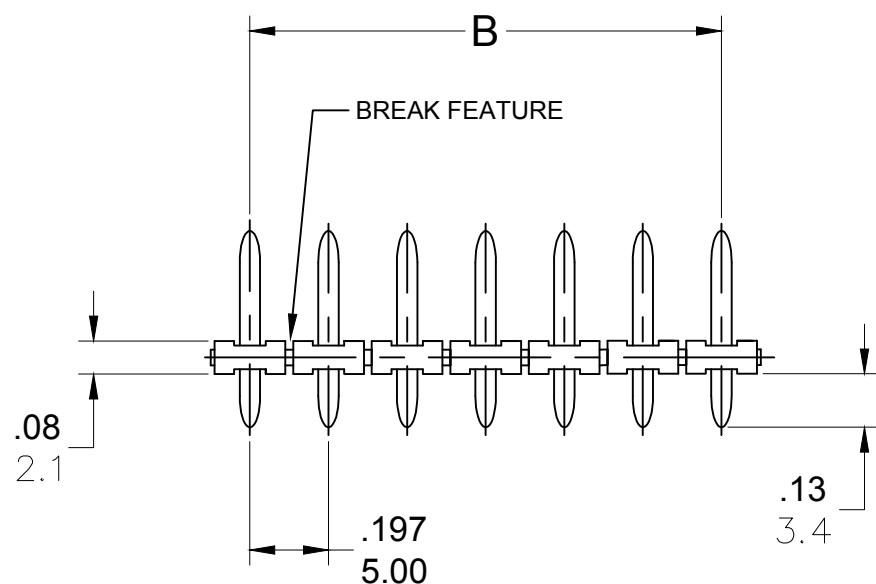
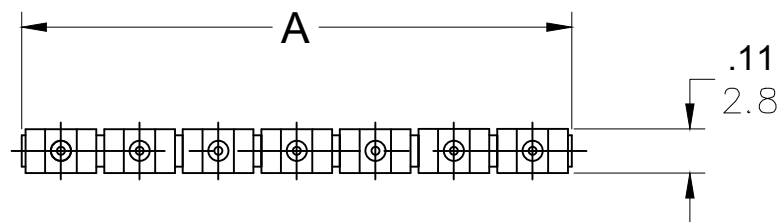
5

4

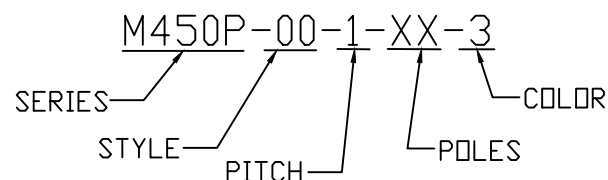
3

2

1

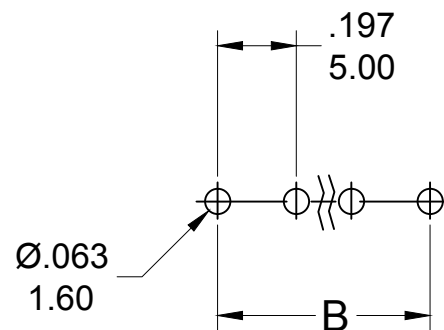


## ENGINEERING NUMBER LEGEND



## CONTACT FACTORY FOR OPTIONAL COLORS

TOLERANCES			
MM	TOL	INCH	TOL
0-6	±0.25	0-.24	±.010
>6-30	±0.40	.24-1.18	±.016
>30-120	±0.50	1.18-4.76	±.020
>120	±0.80	>4.76	±.031



## PCB LAYOUT

## SPECIFICATIONS

## 1. MATERIAL:

A. BODY: PA66, UL94V-0

B. TERMINAL: BRASS. TIN PLATED

2. RATING: 300V, 10A

3. OPERATING TEMPERATURE: -40°C TO +105° C

4. MAX SOLDERING: 260° C (+500° F) FOR 5 SECONDS

5. DIMS SHOWN ARE FOR REFERENCE ONLY

## PART NUMBER DATA

CIRCUITS	PART NUMBER	ENGINEERING NUMBER	COLOR	A IN mm		B IN mm	
2	397560002	M450P-00-1-02-3	GREEN	.39	10.0	.197	5.00
3	397560003	M450P-00-1-03-3	GREEN	.59	15.0	.394	10.00
4	397560004	M450P-00-1-04-3	GREEN	.79	20.0	.591	15.00
5	397560005	M450P-00-1-05-3	GREEN	.98	25.0	.787	20.00
6	397560006	M450P-00-1-06-3	GREEN	1.18	30.0	.984	25.00
7	397560007	M450P-00-1-07-3	GREEN	1.38	35.0	1.181	30.00
8	397560008	M450P-00-1-08-3	GREEN	1.57	40.0	1.378	35.00
9	397560009	M450P-00-1-09-3	GREEN	1.77	45.0	1.575	40.00
10	397560010	M450P-00-1-10-3	GREEN	1.97	50.0	1.772	45.00
11	397560011	M450P-00-1-11-3	GREEN	2.17	55.0	1.969	50.00
12	397560012	M450P-00-1-12-3	GREEN	2.36	60.0	2.165	55.00
13		M450P-00-1-13-3	GREEN	2.56	65.0	2.362	60.00
14		M450P-00-1-14-3	GREEN	2.76	70.0	2.559	65.00
15		M450P-00-1-15-3	GREEN	2.95	75.0	2.756	70.00
16		M450P-00-1-16-3	GREEN	3.15	80.0	2.953	75.00
17		M450P-00-1-17-3	GREEN	3.35	85.0	3.150	80.00
18		M450P-00-1-18-3	GREEN	3.54	90.0	3.346	85.00
19		M450P-00-1-19-3	GREEN	3.74	95.0	3.543	90.00
20		M450P-00-1-20-3	GREEN	3.94	100.0	3.740	95.00
21		M450P-00-1-21-3	GREEN	4.13	105.0	3.937	100.00
22		M450P-00-1-22-3	GREEN	4.33	110.0	4.134	105.00
23		M450P-00-1-23-3	GREEN	4.53	115.0	4.331	110.00
24		M450P-00-1-24-3	GREEN	4.72	120.0	4.528	115.00
25		M450P-00-1-25-3	GREEN	4.92	125.0	4.724	120.00
26		M450P-00-1-26-3	GREEN	5.12	130.0	4.921	125.00
27		M450P-00-1-27-3	GREEN	5.31	135.0	5.118	130.00
28		M450P-00-1-28-3	GREEN	5.51	140.0	5.315	135.00
29		M450P-00-1-29-3	GREEN	5.71	145.0	5.512	140.00
30		M450P-00-1-30-3	GREEN	5.91	150.0	5.709	145.00

REF. THE LAST 2 DIGITS OF THE PART NUMBER EQUAL CIRCUIT COUNT

## SPECIFICATIONS

## 1. MATERIAL:

A. BODY: PA66, UL94V-0

B. TERMINAL: BRASS. TIN PLATED

2. RATING: 300V, 10A

3. OPERATING TEMPERATURE: -40°C TO +105° C

4. MAX SOLDERING: 260° C (+500° F) FOR 5 SECONDS

5. DIMS SHOWN ARE FOR REFERENCE ONLY

REV	DESCRIPTION	QUALITY SYMBOLS	GENERAL TOLERANCES (UNLESS SPECIFIED)		DIMENSION STYLE		SCALE	DESIGN UNITS	THIRD ANGLE PROJECTION
			mm	INCH	IN/MM				
4/6/17	REVISED DOC TOL	▽=0	4 PLACES	±---	IN/MM	DRAWN BY	DATE	TITLE	SHEET NO.
EC NO: IPG2017-0881	DRWN: ABENJAMI	▽C=0	3 PLACES	±---		RSTONE	2014/07/28		
2014/10/16	CHKD: BRUPERT		2 PLACES	±---		G FARNSW	---	MOLEX INCORPORATED	
	APPR: BRUPERT		1 PLACE	±---		JFMURPHY	2014/10/16		
			ANGULAR ±---°			MATERIAL NO.		SD-39756-001	
			DRAFT WHERE APPLICABLE MUST REMAIN WITHIN DIMENSIONS			SEE CHART			
A1					SIZE				
					B				

10

9

8

7

6

5

4

3

2

1