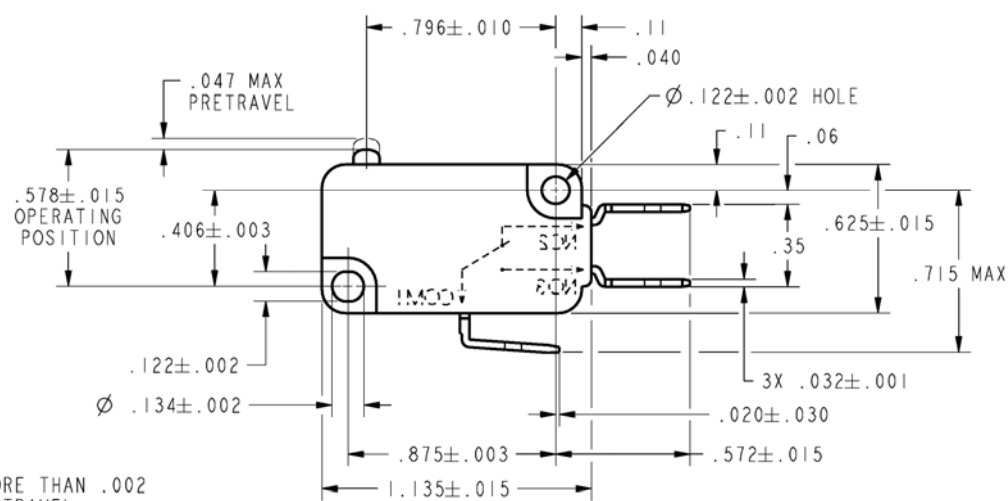
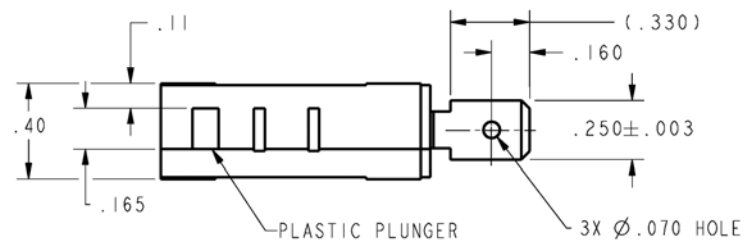


| REV | DOCUMENT | CHANGED BY | CHECK |
|-----|----------|-------------|-------|
| 6 | 202161 | DLT 18JAN01 | SAV |
| 7 | 207439 | TSM 13FEB03 | SAV |



NOTE
1 - PLUNGER MUST NOT PROTRUDE MORE THAN .002 ABOVE CASE WHEN AT FULL OVERTRAVEL

| CHARACTERISTICS |
|-----------------------------------|
| OPERATING FORCE-----160 GRAMS MAX |
| RELEASE FORCE-----20 GRAMS MIN |
| DIFFERENTIAL TRAVEL-----.002-.010 |
| OVERTRAVEL-----.050 MIN |
| FREE POSITION -----.625 MAX |
| RELEASE TRAVEL-----.010 MIN |

| ELECTRICAL DATA |
|---|
| CONTACT ARRANGEMENT S P D T |
| 21A 1HP 125, 250, 277 VAC 2HP 250, 277 VAC |
| |
| |
| |

| UNLESS OTHERWISE SPECIFIED TOLERANCES ARE: |
|--|
| NO PLACE X ±.040 ±1 |
| ONE PLACE .X ±.030 ±0,4 |
| TWO PLACE .XX ±.015 ±0,15 |
| THREE PLACE .XXX ±.005 ± |
| ANGLES ± ± |
| RAW MATERIAL-COMMERCIAL STANDARD |
| THIRD ANGLE PROJECTION |

| DRAWN | DLT | 18JAN01 |
|--|------------------|---------|
| CHECK | SAV | 18JAN01 |
| THIS DRAWING COVERS A PROPRIETARY ITEM AND IS THE PROPERTY OF HONEYWELL. THIS DRAWING IS NOT TO BE COPIED OR USED WITHOUT THE PERMISSION OF HONEYWELL. | | |
| DIMENSIONS ARE TO BE MET BEFORE PROTECTIVE COATINGS ARE APPLIED | | |
| PTC 2D | ASME Y14.5M-1994 | |

| | | | |
|-------------------------------|----------|------------------------|--------------|
| Honeywell | | | |
| TITLE SWITCH, BASIC | | | |
| SIZE | DWG TYPE | DRAWING NAME | REV |
| B | I | V7-IV10E9-000-1 | 7 |
| SCALE | 2:1 | WEIGHT | SHEET 1 OF 1 |