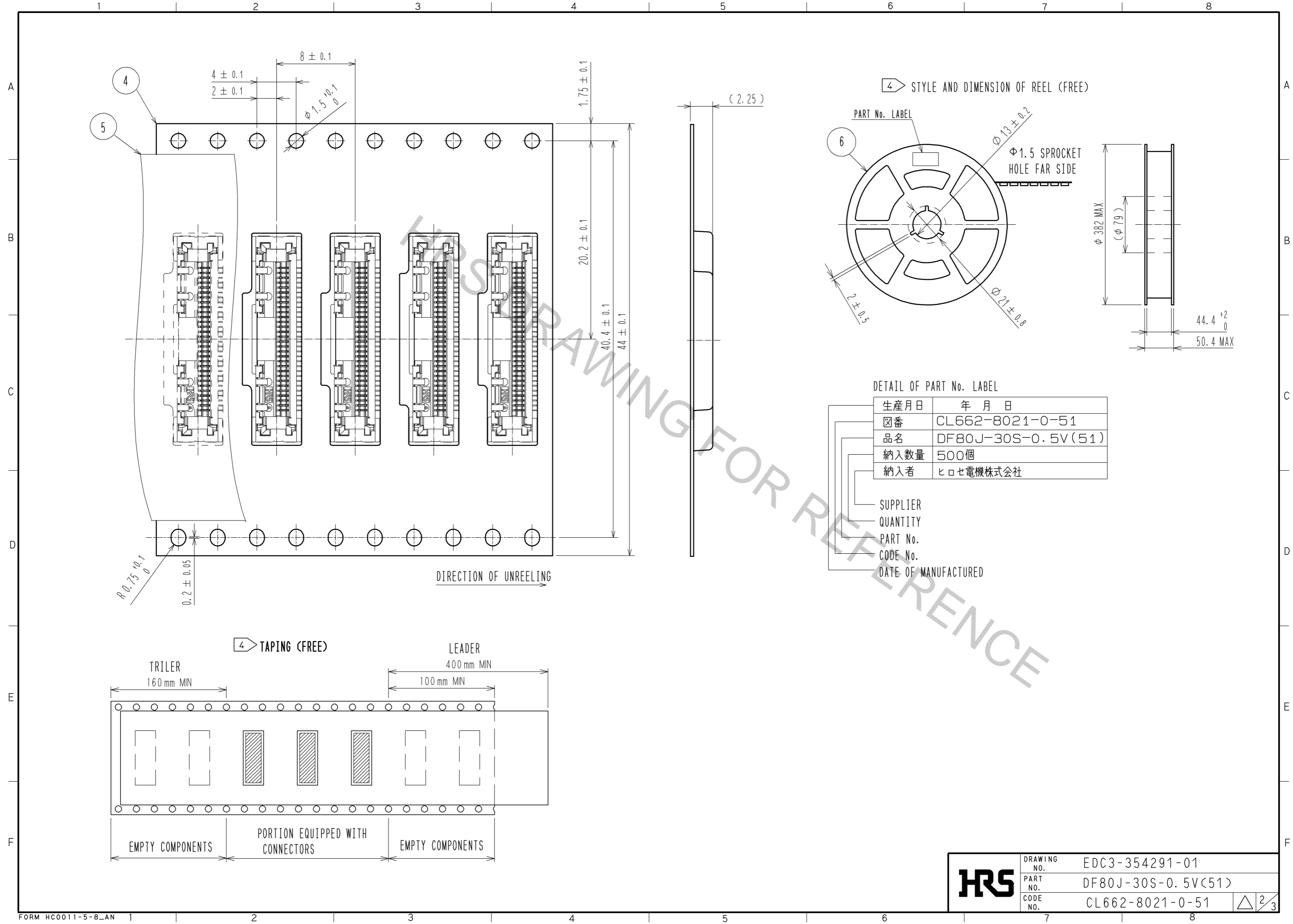


- NOTES 1. LEAD CO-PLANARITY SHALL BE 0.1mmMAX.
 2. PER REEL : 500 COMPONENTS.
 3. THE DIMENSIONS IN PARENTHESES ARE FOR REFERENCE.
 4. REFER TO JIS 0806. (PACKING OF COMPONENTS FOR AUTO HANDRING)

RECOMMENDED METAL MASK
 THICKNESS 0.1mm
 OPENING RATIO 100*(LEAD PAD)
 100*(GND PAD)

2	LCP	UL94V-0 , BLACK	6	PS	BLACK
1	PHOSPHOR BRONZE	CONTACT AREA : Gold PLATING 0.05μmMIN LEAD AREA : Gold PLATING 0.05μmMIN UNDER PLATING : Nickel PLATING 1μmMIN	5	POLYESTER	CLEAR
			4	PS	CLEAR
			3	PHOSPHOR BRONZE	WHOLE AREA : Tin PLATING 1μmMIN UNDER PLATING : Copper PLATING 0.3μmMIN
NO.	MATERIAL	FINISH , REMARKS	NO.	MATERIAL	FINISH , REMARKS
UNITS mm		SCALE 4 : 1	COUNT 	DESCRIPTION OF REVISIONS	
DESIGNED		CHECKED		DATE	
APPROVED : MH. YAMANE 14.07.16			DRAWING NO. EDC3-354291-01		
CHECED : MH. TSUCHIDA 14.07.16			PART NO. DF80J-30S-0.5V(51)		
DESIGNED : TP. MATSUMOTO 14.07.14			CODE NO. CL662-8021-0-51		
DRAWN : TP. MATSUMOTO 14.07.14					



HRS	DRAWING NO.	EDC3-354291-01
	PART NO.	DF80J-30S-0.5V(51)
	CODE NO.	CL662-8021-0-51
		△ 2/3

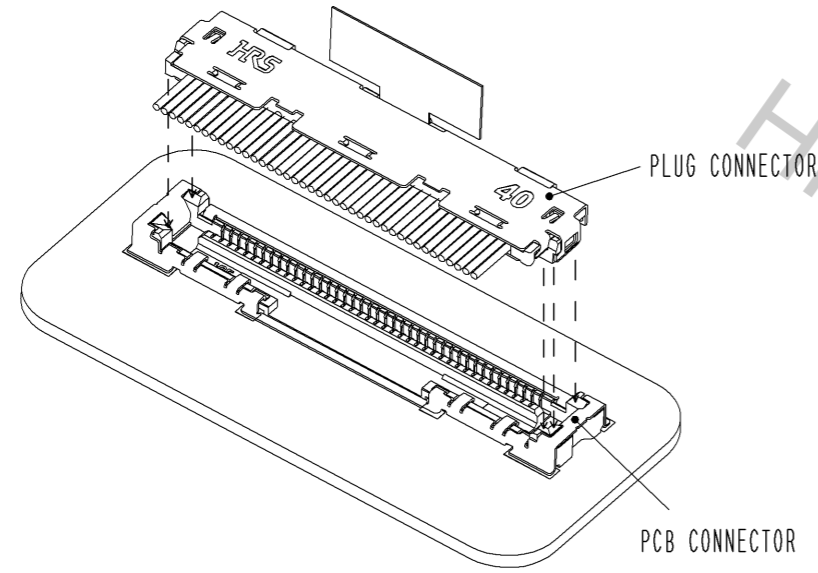
[CONNECTOR INSERTION]

1. ALIGN THE PLUG CONNECTOR TO THE GUIDES ON PCB CONNECTOR AND INSERT.
2. APPLY EVEN FORCE TO THE PLUG CONNECTOR SURFACE.

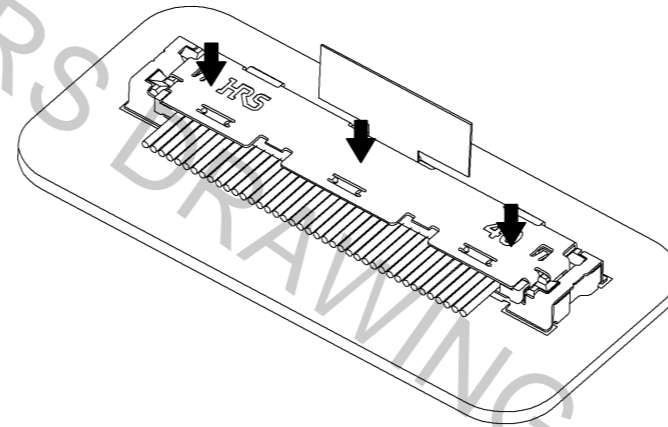
SUPPLEMENTATION

TOTAL HEIGHT IS KEPT WITHIN THE HEIGHT OF MATED CONNECTORS BY LAYING DOWN THE PULL TAB AS SHOWN.

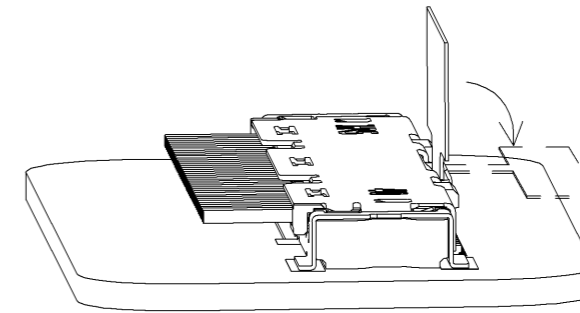
PROCEDURE 1



PROCEDURE 2



SUPPLEMENTATION :
METHOD OF STORING PULL TAB



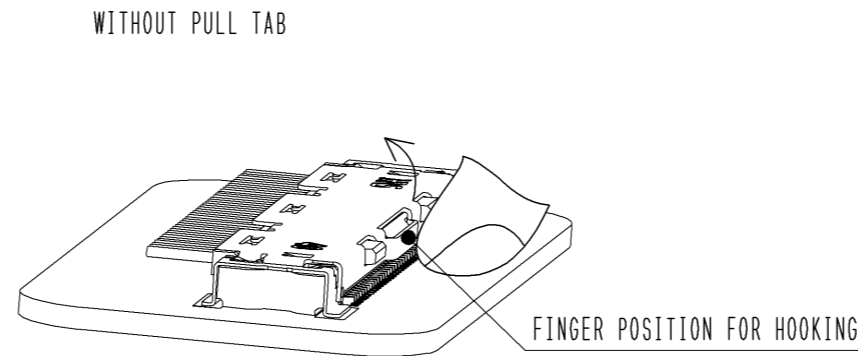
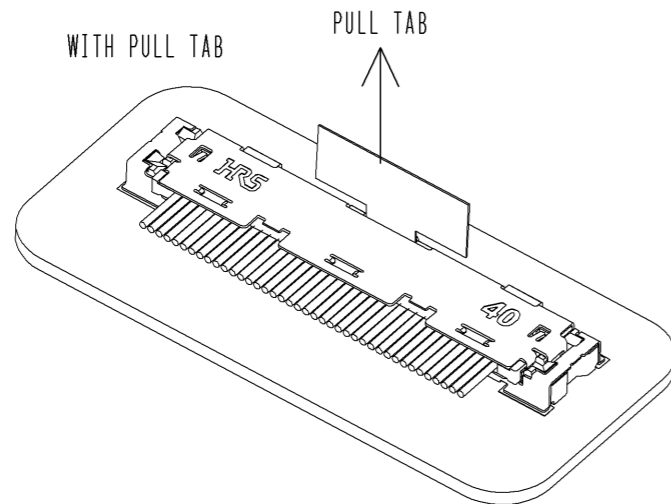
[CONNECTOR WITHDRAWAL]

<WITH PULL TAB>

BY PULLING UP THE TAB TO THE DIRECTION INDICATED WITH THE ARROW, PLUG CONNECTOR IS RELEASED.

<WITHOUT PULL TAB>

BY HOOKING THE PLUG CONNECTOR AT THE POSITION SHOWN WITH FINGER AND PULLING UP, PLUG CONNECTOR IS RELEASED.



HRS	DRAWING NO.	EDC3-354291-01	△ 3/3
	PART NO.	DF80J-30S-0.5V(51)	
	CODE NO.	CL662-8021-0-51	