

Miniature Subminiature Precision Snap-acting Switches

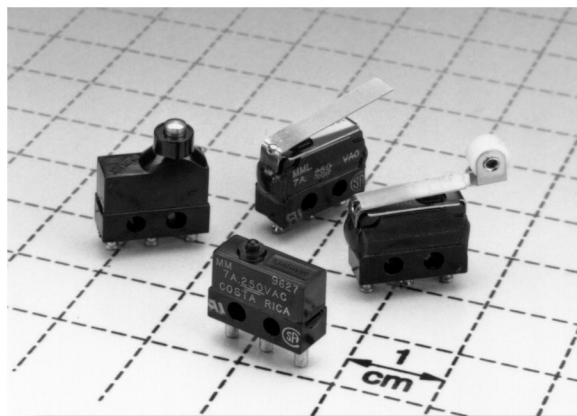


Features/Benefits

- Low level and power switching
- Long electrical and mechanical life
- Increased overtravel
- Reliable snap-acting mechanism

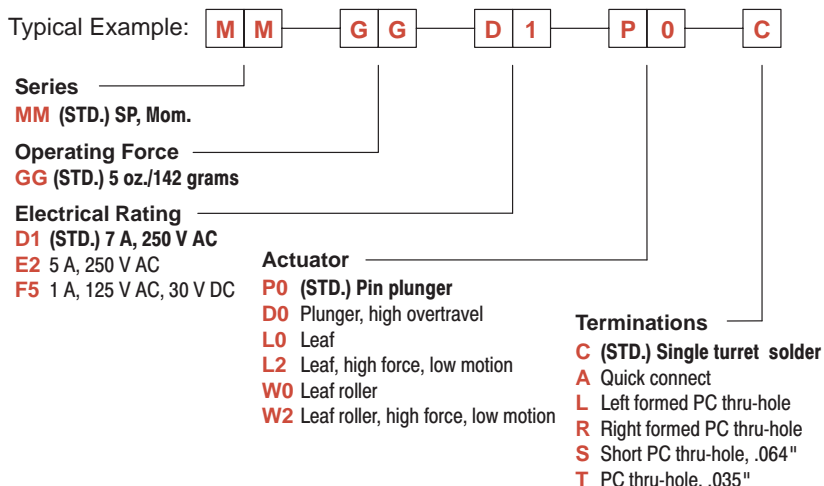
Typical Applications

- Limited space constraints
- Miniaturized military devices
- Communication devices



Build-A-Switch

Our easy Build-A-Switch concept allows you to mix and match options to create the switch you need. Below is a complete listing of options shown in catalog. To order, simply select desired option from each category and place in the appropriate box. A switch with standard options is shown on page G-28. Available options are shown and described on pages G-28 and G-29. For additional options not shown in catalog, consult Customer Service Center.



Specifications

CONTACT RATING: From low level* to 7 AMPS @ 250 V AC.
 ELECTRICAL LIFE: 100,000 cycles at full rated load.
 INSULATION RESISTANCE: 1,000 megohms min.
 DIELECTRIC STRENGTH: 1,000 V RMS min. @ sea level.
 OPERATING TEMPERATURE: -67° F to 275° F (-55° C to 135° C).
 OPERATING FORCE: 5 oz. (142 grams) max. at actuator button.
 MOUNTING: 2-56 screws, torque 2 in/lbs max.

NOTE: Specifications and materials listed above are for switches with standard options. For information on specific and custom switches, consult Customer Service Center.

* Low Level=conditions where no arcing occurs during switching, i.e., 0.4 VA max. @ 20 V AC or DC max.

Materials

SWITCH HOUSING: Heat resistant phenolic (UL 94V-0).
 ACTUATOR BUTTON: Heat resistant phenolic (UL 94V-0).
 SPRING: Beryllium copper CDA alloy C17200.
 PIVOT: Brass CDA alloy 260.
 MOVABLE CONTACTS: Fine silver for ratings greater than 1 AMP @ 125 V AC. 24K gold for 1 AMP @ 125 V AC or less.
 STATIONARY CONTACTS: Fine silver inlay on copper CDA alloy C10200 for ratings greater than 1 AMP @ 125 V AC. 24K gold on copper CDA alloy C10200 for 1 AMP @ 125 V AC or less.
 TERMINALS: Copper CDA alloy C18700.

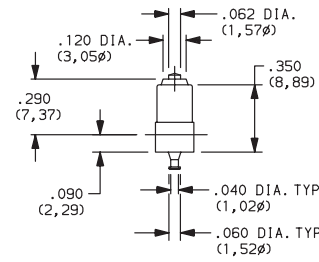
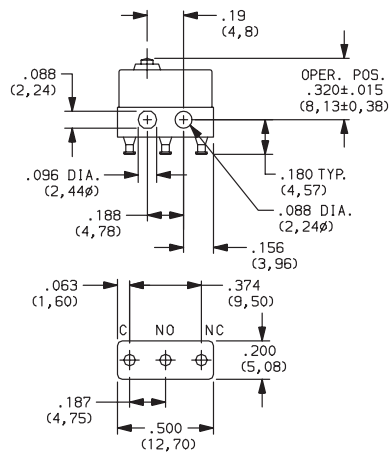


C&K MM Series Miniature Subminiature Precision Snap-acting Switches

SWITCH WITH STANDARD OPTIONS

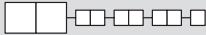


MMGGD1P0C



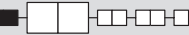
PART NUMBER	BASIC OPERATING FORCE (OZ./GRAMS)	ELECTRICAL RATING
MMGGD1P0C	5 142	7 AMPS @ 250 V AC.

SERIES



MM (STD.) SPDT MOMENTARY

OPERATING FORCE



OPTION CODE	BASIC SWITCH OPERATING FORCE
GG (STD.)	5 oz. (142 grams) maximum for basic switch with pin plunger actuator ('P0' actuator option).

NOTE: Operating force varies with actuator option, see ACTUATOR option section.

ELECTRICAL RATING



OPTION CODE	CONTACT MATERIAL		ELECTRICAL RATING
	MOVABLE CONTACT	STATIONARY CONTACT	
D1 (STD.)	Fine silver.	Fine silver inlay on copper CDA alloy C10200.	7 AMPS @ 250 V AC.
E2			5 AMPS @ 250 V AC.
F5	24K Gold.	24K Gold on copper CDA alloy C10200.	From low level* to 1 AMP @ 125 V AC, 30 V DC.

All models with all options.

Consult Customer Service Center for availability and delivery of nonstandard ratings.

* Low Level=conditions where no arcing occurs during switching, i.e., 0.4 VA max. @ 20 V AC or DC max.

ACTUATOR



OPTION CODE	FIG.	DIM. A	DIM. B	DIM. C
P0 (STD.)	3	.19 (4,8)	.320 ± .015 (8,13 ± 0,38)	—
D0	1	.19 (4,8)	.475 ± .031 (12,07 ± 0,79)	—
L0	2	.34 (8,6)	.330 ± .015 (8,38 ± 0,38)	—
L2	5	.53 (13,5)	.330 ± .015 (8,38 ± 0,38)	—
W0	4	.27 (6,9)	.532 ± .025 (13,51 ± 0,64)	.188 dia. (4,78φ)
W2	6	.46 (11,7)	.532 ± .025 (13,51 ± 0,64)	.188 dia. (4,78φ)

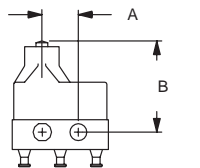


FIG. 1
Plunger

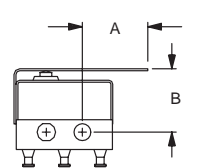


FIG. 2
Leaf

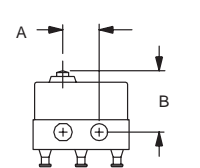


FIG. 3
Pin Plunger

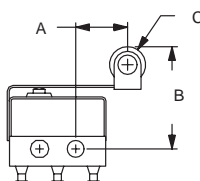


FIG. 4
Leaf Roller

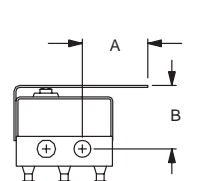


FIG. 5
Leaf

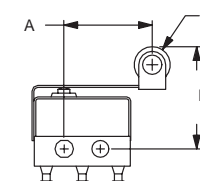


FIG. 6
Leaf Roller

Snap-acting



C&K MM Series Miniature Subminiature Precision Snap-acting Switches

ACTUATOR 

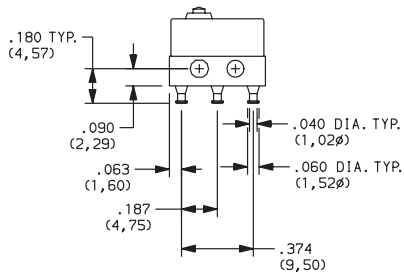
SWITCH CHARACTERISTICS

OPTION CODE	MAXIMUM OPERATING FORCE (OZ./GRAMS)	MINIMUM RELEASE FORCE (OZ./GRAMS)	MAXIMUM DIFFERENTIAL TRAVEL	MAXIMUM PRETRAVEL	MINIMUM OVERTRAVEL
D0	5 142	.7 20	.004 (0,10)	.030 (0,76)	.040 (1,02)
L0	4 115	.7 20	.025 (0,64)	.090 (2,29)	.045 (1,14)
L2	6 170	.7 20	.012 (0,30)	.075 (1,90)	.015 (0,38)
P0	5 142	1 28	.002 (0,05)	.020 (0,51)	.004 (0,10)
W0	4 115	.7 20	.025 (0,64)	.090 (2,29)	.045 (1,14)
W2	6 170	.7 20	.012 (0,30)	.075 (1,90)	.015 (0,38)

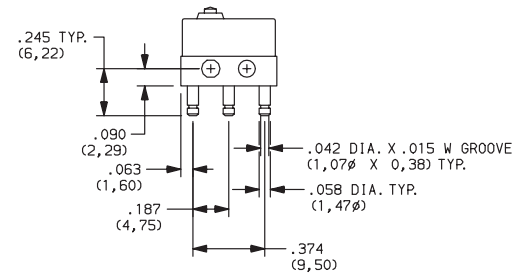
NOTE: For basic switch operating forces, see page G-28.

TERMINATIONS 

C (STD.) SINGLE TURRET SOLDER

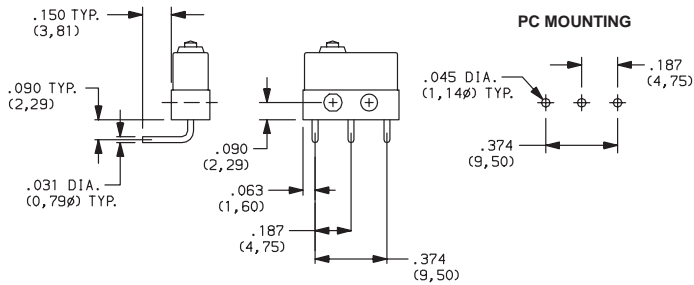


A .058" DIAMETER QUICK CONNECT

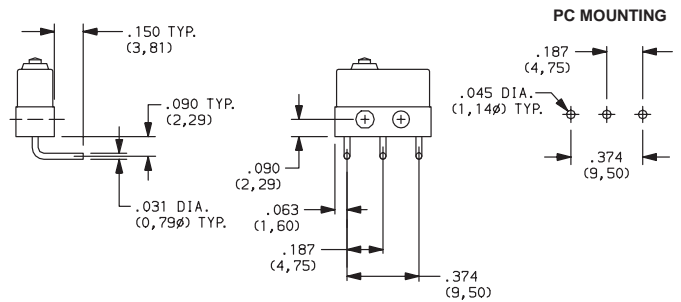


NOTE: Use Amp Quick Connect Part No. 60789-1.

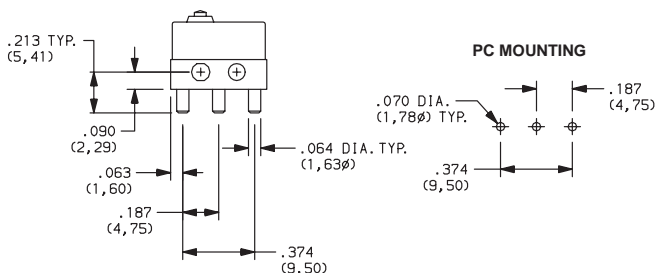
L LEFT FORMED PC THRU-HOLE



R RIGHT FORMED PC THRU-HOLE



S SHORT PC THRU-HOLE, .064"



T PC THRU-HOLE, .035"

