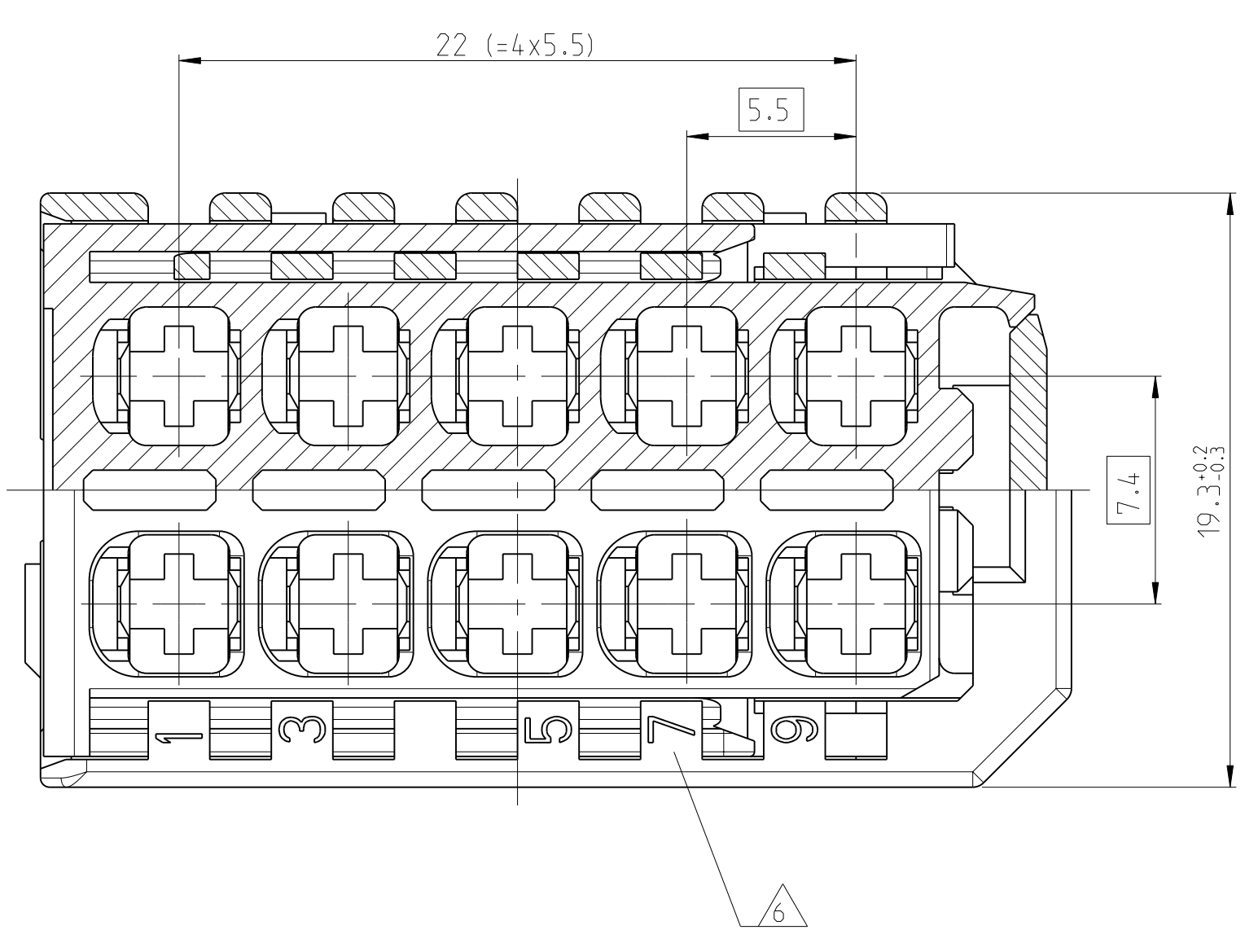
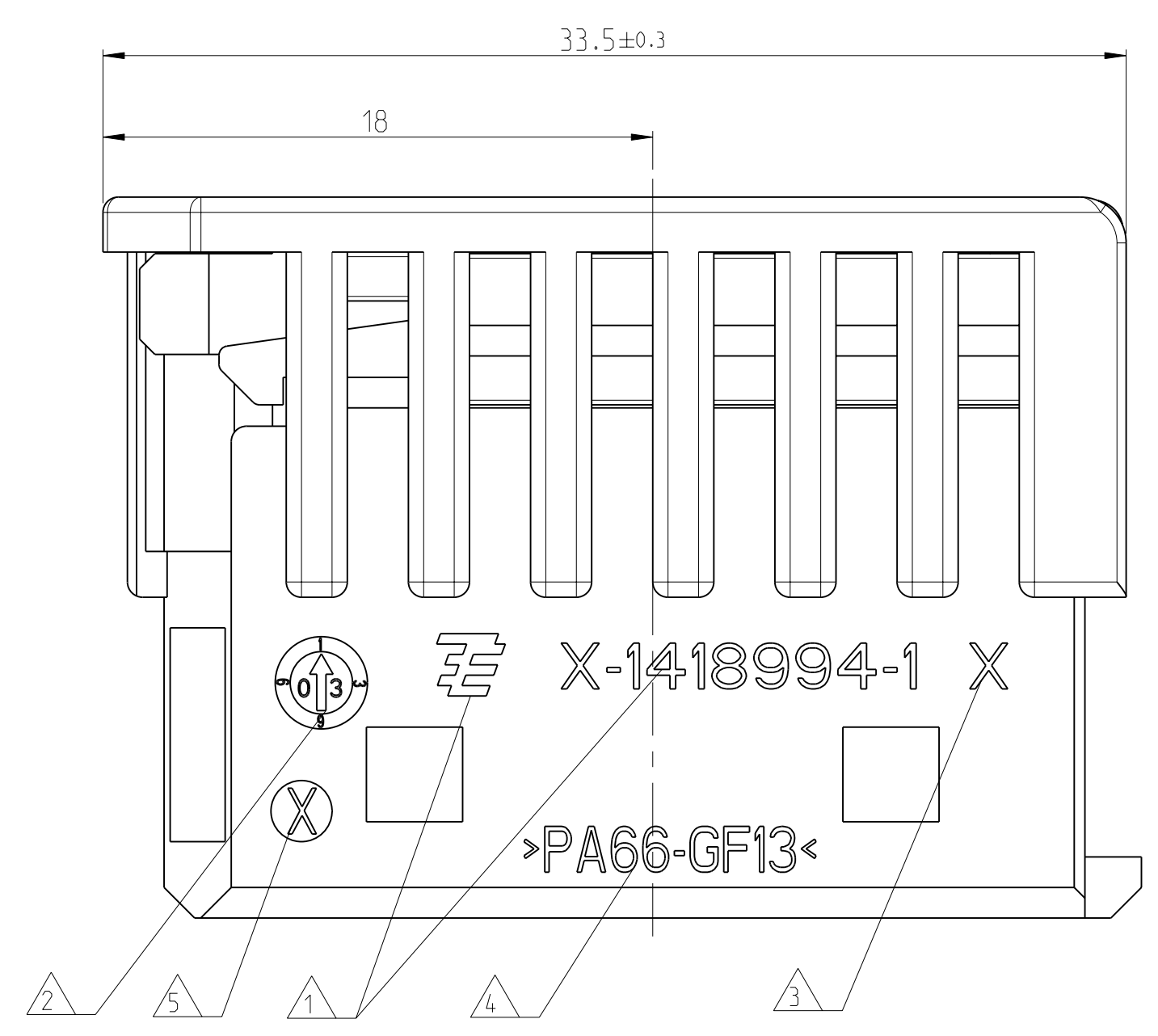
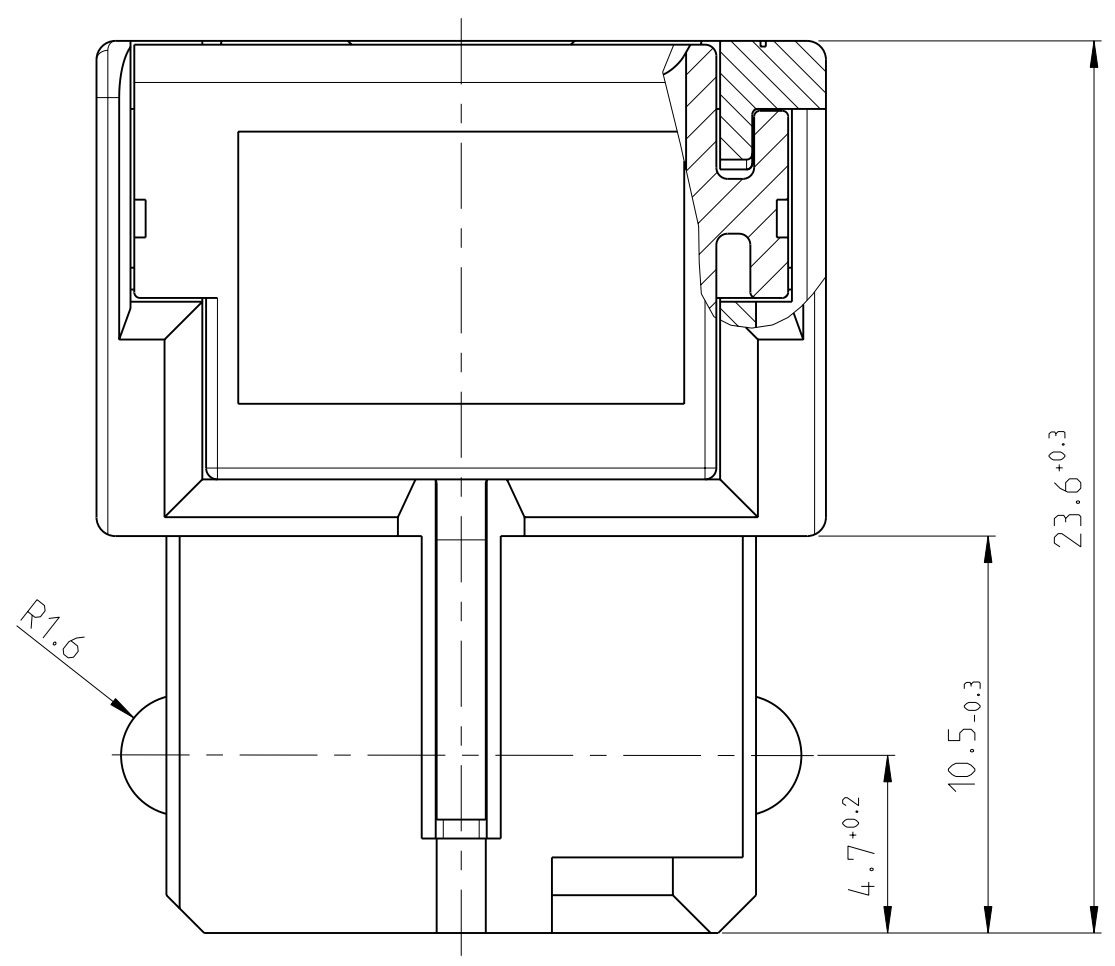
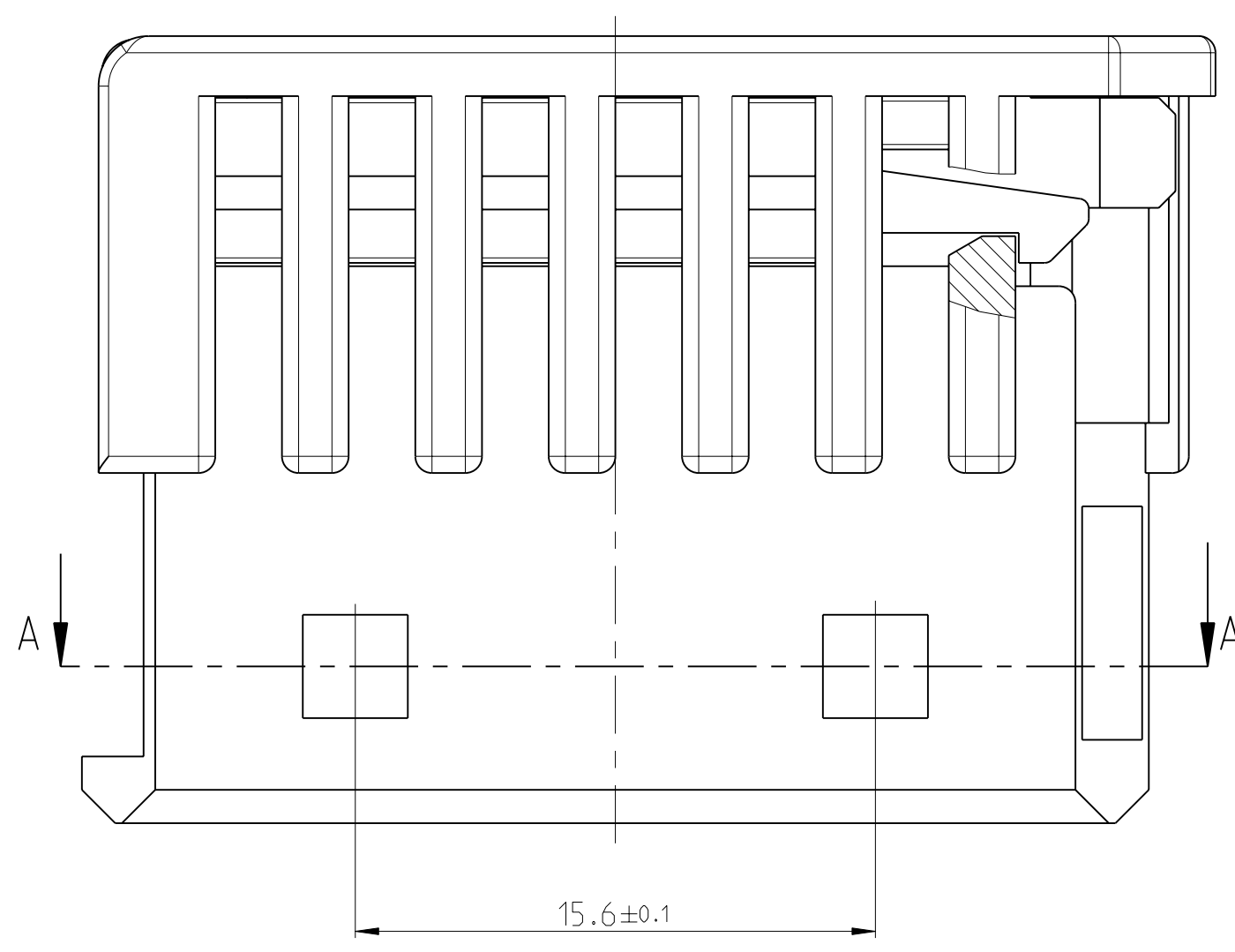
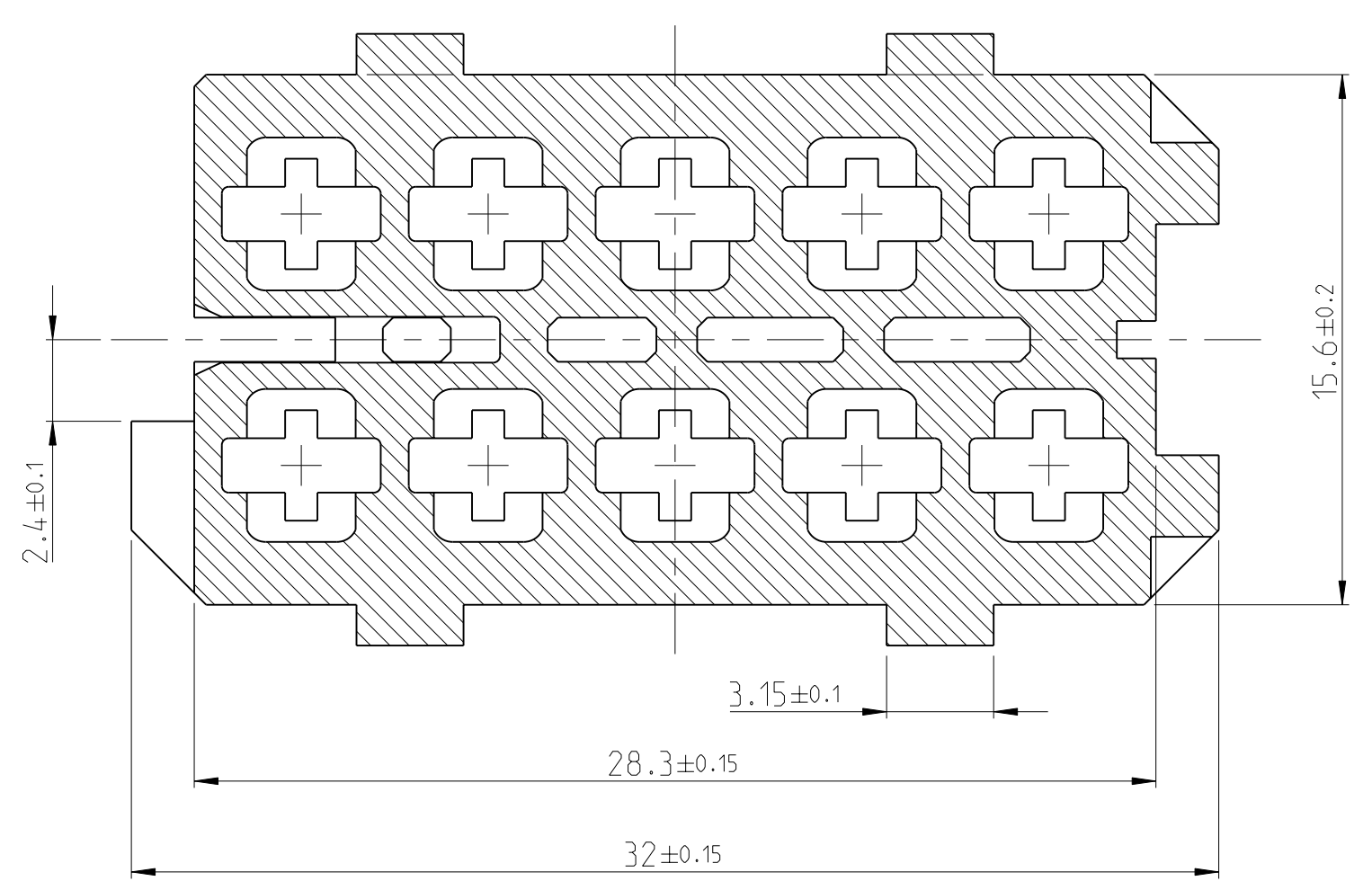


LOC	DIST	REV	DATE	DWN	APVD
A1	-	B	26MAY2003	CG	JG
		B1	11JAN2005	CG	JG
		B2	19MAY2009	TGN	JG
		B3	06APR2011	CG	JG



SECTION A-A
Schnitt



HOUSING IN PRE-LOCKED POSITION
(DELIVERY CONDITION)
 Gehäuse in Vorraststellung
(Lieferzustand)

- NOTES
Bemerkungen
- ① TE-LOGO AND PARTNUMBER
TE-Logo und Teile-Nr.
 - ② PRODUCTION-DATE
Produktionsdatum
 - ③ REVISION STATUS OF THE MOULD
Aenderungszustand des Werkzeugs
 - ④ MATERIAL MARKING ACCORDING TO VDA 260
Werkstoffkennzeichnung nach VDA 260
 - ⑤ MOULD CAVITY MARKING
Nestmarkierung
 - ⑥ CAVITY MARKING
Kammerbezeichnung
 - 7 MAX. FOR 2.5MM² FLR CABLE
max. fuer 2.5mm² FLR Kabel
 - ⑧ SUITABLE AMP MCP 2.8 FLAT TYPE RECEPTACLE
SEE DRAWING NO. 1355036
Zu verwendender AMP MCP 2.8 Buchsenkontakt
siehe Zeichnung Nr. 1355036
 - 9 BULK PACKAGING IN CORRUGATED BOX
Schuetttgut im Versandkarton

REV.	REV.	COLOUR	DESCRIPTION	ITEM	MATERIAL	WEIGHT	ITEM NO.	SCALE	SHEET	OF	REV.
TE Bestell-Nr.	REV.	Farbe	Beschreibung		PA66-GF13	GEWICHT		MASSSTAB	BLATT	VON	B3
3-1418994-1	B	GREEN gruen	HOUSING, 10POS. WITH SEC LOCK Gehaeuse, 10pol. mit 2ter Kosi	1							
2-1418994-1	B	BLUE blau	HOUSING, 10POS. WITH SEC LOCK Gehaeuse, 10pol. mit 2ter Kosi	1							
1-1418994-1	B	RED rot	HOUSING, 10POS. WITH SEC LOCK Gehaeuse, 10pol. mit 2ter Kosi	1							
1418994-1	B	BLACK schwarz	HOUSING, 10POS. WITH SEC LOCK Gehaeuse, 10pol. mit 2ter Kosi	1							
TE ORDER-NO. TE Bestell-Nr.	REV.	COLOUR Farbe	DESCRIPTION Beschreibung	ITEM	MATERIAL	WEIGHT GEWICHT	ITEM NO.	SCALE MASSSTAB	SHEET BLATT	OF VON	REV.
					PA66-GF13	7.8g		5:1	1	1	B3



AMP MCP 2.8 HOUSING, 10POS.
WITH SECOND LOCKING DEVICE
AMP MCP 2.8 Gehaeuse, 10pol.
mit zweiter Kontaktsicherung

SIZE: A1
CAGE CODE: 100779
DRAWING NO.: 1418994