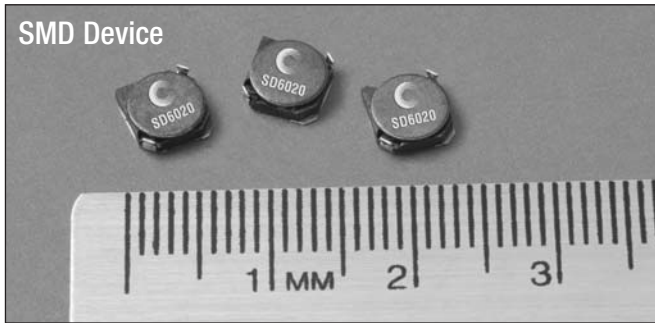


# Low-Profile Power Inductors

## SD6020 Series



### Description

- Halogen free, lead free and RoHS compliant
- 125°C maximum temperature operation
- Low profile surface mount shielded drum core inductors
- 6.0 x 6.0 x 2.0mm maximum surface mount package
- Ferrite core material
- Inductance range from 1.99uH to 100uH
- Current range from 0.36 to 4.2 Amps
- Frequency range up to 1MHz

### Applications

- Notebook computers
- Digital cameras
- LED Drivers
- TFT LCD Bias supplies
- Wireless handsets, handheld instruments
- Gaming consoles, GPS devices
- Battery backup/power
- DC-DC Converters, buck-boost regulators

### Environmental Data

- Storage temperature range: -40°C to +125°C
- Operating temperature range: -40°C to +125°C (ambient plus self-temperature rise)
- Solder reflow temperature: J-STD-020D compliant

### Packaging

- Supplied in tape and reel packaging, 2600 per 13" diameter reel

Product Specifications						
Part Number <sup>5</sup>	OCL <sup>1</sup> $\mu\text{H} \pm 30\%$	$I_{\text{rms}}^2$ (Amps)	$I_{\text{sat}}^3$ (Amps)	Typ. DCR $\text{m}\Omega$ @ 20°C	Max DCR $\text{m}\Omega$ @ 20°C	K-factor <sup>4</sup>
SD6020-2R2-R	1.99	4.2	2.2	30.0	36.0	40.0
SD6020-4R1-R	3.9	2.22	1.95	47.5	57.0	28.5
SD6020-5R4-R	5.5	1.80	1.60	63.3	76.0	24.0
SD6020-6R2-R	6.5	1.63	1.40	80.0	96.0	22.2
SD6020-8R9-R	8.5	1.47	1.25	96.7	116.0	19.3
SD6020-100-R	9.7	1.39	1.20	103.3	124.0	18.1
SD6020-120-R	11	1.31	1.10	115.0	138.0	17.1
SD6020-150-R	13	1.07	0.97	163.3	196.0	15.4
SD6020-180-R	16	1.10	0.85	175.0	210.0	13.9
SD6020-220-R	20	0.94	0.80	241.7	290.0	12.7
SD6020-270-R	27	0.82	0.75	275.0	330.0	10.9
SD6020-330-R	29	0.76	0.65	320.8	385.0	10.5
SD6020-390-R	37	0.63	0.57	416.7	500.0	9.2
SD6020-470-R	45	0.61	0.54	495.8	595.0	8.2
SD6020-560-R	55	0.57	0.50	515.0	618.0	7.8
SD6020-680-R	68	0.50	0.43	700.0	840.0	6.7
SD6020-820-R	80	0.48	0.41	815.0	978.0	6.3
SD6020-101-R	94	0.42	0.36	1000.0	1200.0	5.8

1 Open Circuit Inductance Test Parameters: 100kHz, 0.1V, 0.0Adc.

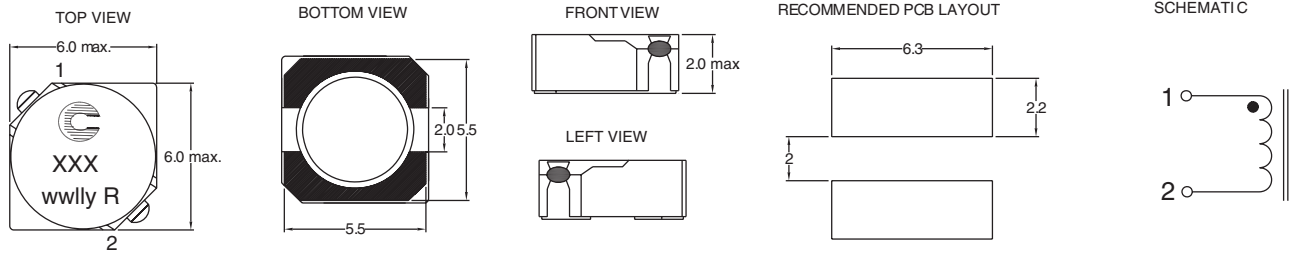
2  $I_{\text{rms}}$ : DC current for an approximate  $\Delta T$  of 40°C without core loss. Derating is necessary for AC currents. PCB layout, trace thickness and width, air-flow, and proximity of other heat generating components will affect the temperature rise. It is recommended that the temperature of the part not exceed 125°C under worst case operating conditions verified in the end application.

3  $I_{\text{sat}}$  Amps peak for 35% rolloff (@25°C)

4 K-factor: Used to determine  $B_{p-p}$  for core loss (see graph).  
 $B_{p-p} = K \cdot L \cdot \Delta I$ ,  $B_{p-p}$  (mT), K: (K factor from table), L: (Inductance in  $\mu\text{H}$ ),  
 $\Delta I$  (Peak-to-peak ripple current in Amps).

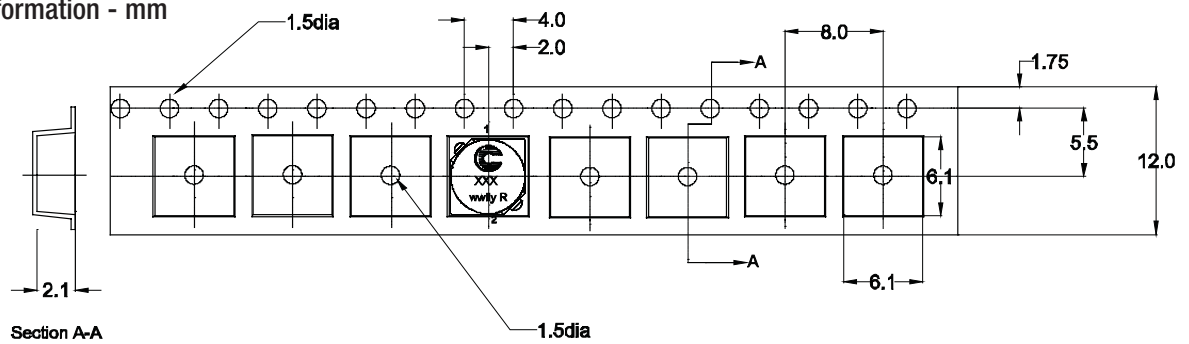
5 Part Number Definition: SD6020-xxx-R  
 SD6020 = Product code and size; -xxx = Inductance value in  $\mu\text{H}$ ;  
 R = decimal point; If no R is present, third character = # of zeros.  
 -R suffix = RoHS compliant

### Dimensions - mm



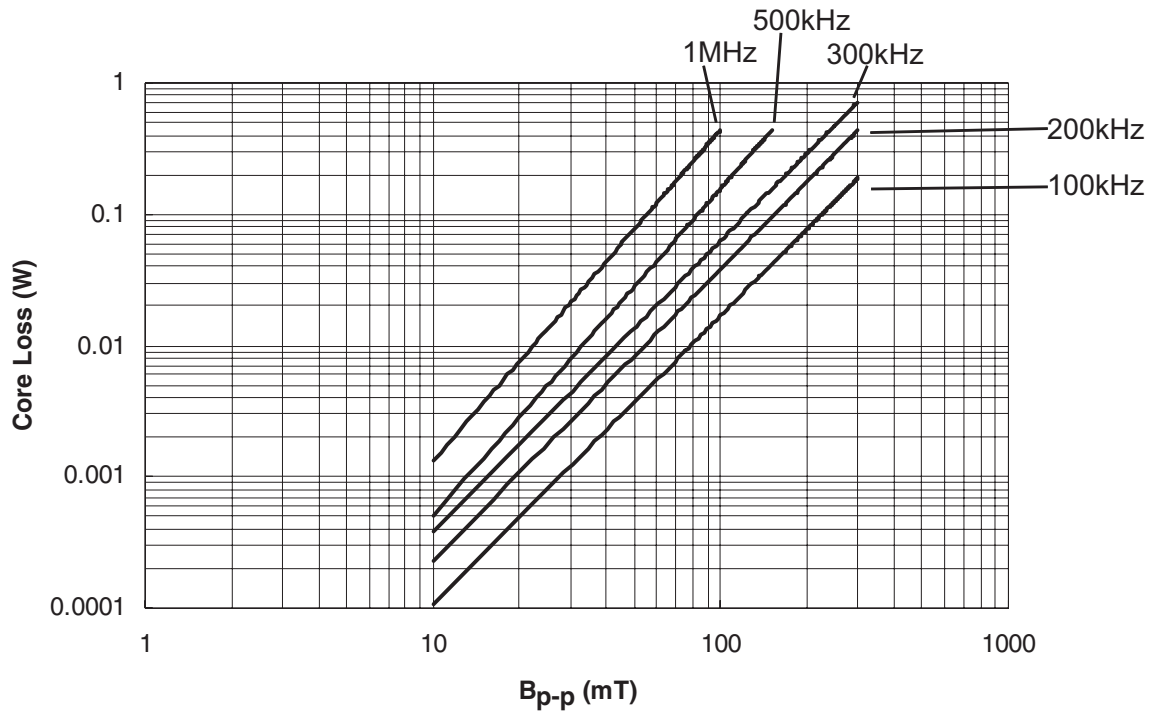
xxx = Inductance value in uH. R = decimal point. If no R is present third character = #of zeros, wwlyy or wwlyy = Date code, R = Revision level.

### Packaging Information - mm

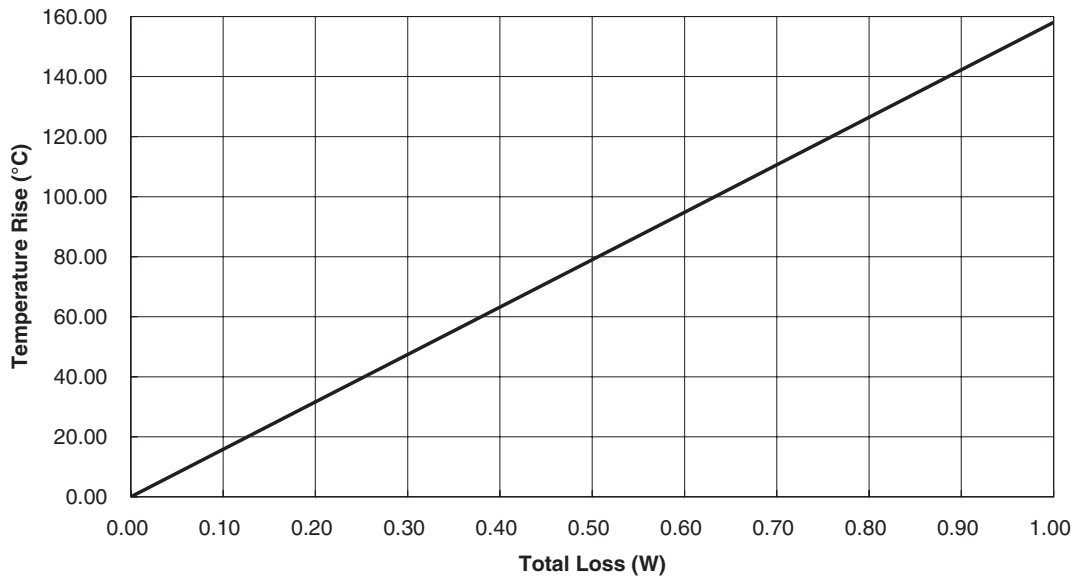


Parts packaged on 13" Diameter reel, 2,600 parts per reel.

### Core Loss

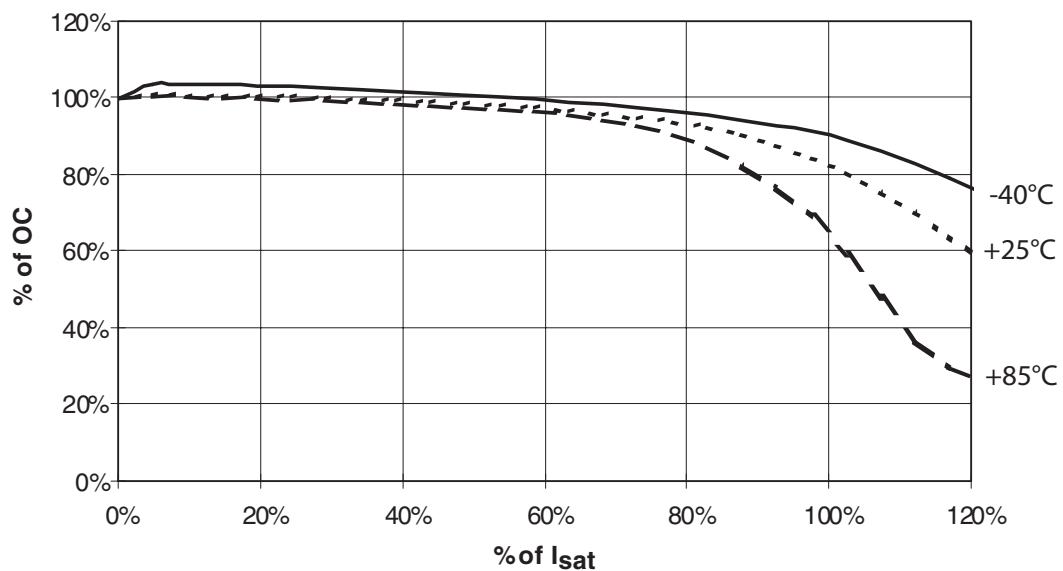


### Temperature Rise vs. Loss



### Inductance Characteristics

OCL Vs. Isat



## Solder Reflow Profile

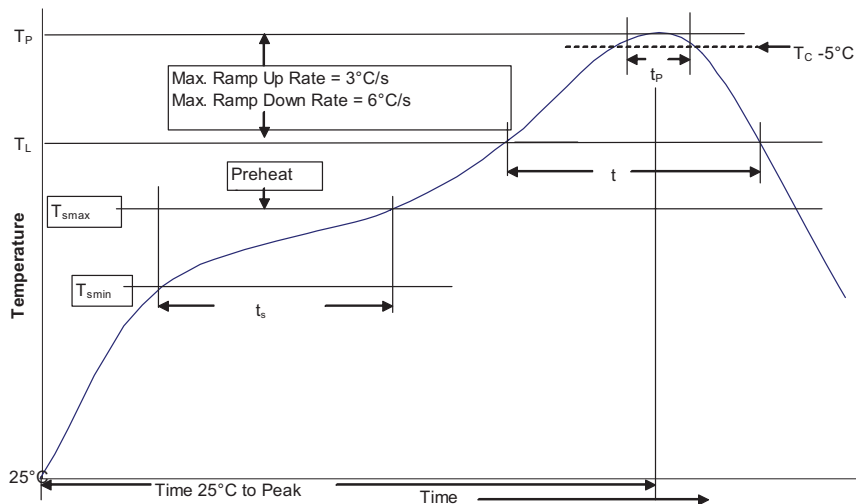


Table 1 - Standard SnPb Solder ( $T_C$ )

Package Thickness	Volume $\text{mm}^3$ <350	Volume $\text{mm}^3$ $\geq 350$
<2.5mm	235°C	220°C
$\geq 2.5$ mm	220°C	220°C

Table 2 - Lead (Pb) Free Solder ( $T_C$ )

Package Thickness	Volume $\text{mm}^3$ <350	Volume $\text{mm}^3$ 350 - 2000	Volume $\text{mm}^3$ >2000
<1.6mm	260°C	260°C	260°C
1.6 - 2.5mm	260°C	250°C	245°C
>2.5mm	250°C	245°C	245°C

## Reference JDEC J-STD-020D

Profile Feature	Standard SnPb Solder	Lead (Pb) Free Solder
Preheat and Soak	<ul style="list-style-type: none"> <li>Temperature min. (<math>T_{smin}</math>)</li> <li>Temperature max. (<math>T_{smax}</math>)</li> <li>Time (<math>T_{smin}</math> to <math>T_{smax}</math>) (<math>t_s</math>)</li> </ul>	<ul style="list-style-type: none"> <li>100°C</li> <li>150°C</li> <li>60-120 Seconds</li> </ul>
Average ramp up rate $T_{smax}$ to $T_p$	3°C/ Second Max.	3°C/ Second Max.
Liquidous temperature ( $T_L$ )	183°C	217°C
Time at liquidous ( $t_L$ )	60-150 Seconds	60-150 Seconds
Peak package body temperature ( $T_p$ )*	Table 1	Table 2
Time ( $t_p$ )** within 5 °C of the specified classification temperature ( $T_C$ )	20 Seconds**	30 Seconds**
Average ramp-down rate ( $T_p$ to $T_{smax}$ )	6°C/ Second Max.	6°C/ Second Max.
Time 25°C to Peak Temperature	6 Minutes Max.	8 Minutes Max.

\* Tolerance for peak profile temperature ( $T_p$ ) is defined as a supplier minimum and a user maximum.

\*\* Tolerance for time at peak profile temperature ( $t_p$ ) is defined as a supplier minimum and a user maximum.

### North America

Cooper Electronic Technologies  
1225 Broken Sound Parkway NW  
Suite F  
Boca Raton, FL 33487-3533  
Tel: 1-561-998-4100  
Fax: 1-561-241-6640  
Toll Free: 1-888-414-2645

Cooper Bussmann  
P.O. Box 14460  
St. Louis, MO 63178-4460  
Tel: 1-636-394-2877  
Fax: 1-636-527-1607

### Europe

Cooper Electronic Technologies  
Cooper (UK) Limited  
Burton-on-the-Wolds  
Leicestershire • LE12 5TH UK  
Tel: +44 (0) 1509 882 737  
Fax: +44 (0) 1509 882 786

Cooper Electronic Technologies  
Avda. Santa Eulalia, 290  
08223  
Terrassa, (Barcelona), Spain  
Tel: +34 937 362 812  
+34 937 362 813  
Fax: +34 937 362 719

### Asia Pacific

Cooper Electronic Technologies  
1 Jalan Kilang Timor  
#06-01 Pacific Tech Centre  
Singapore 159303  
Tel: +65 278 6151  
Fax: +65 270 4160

The only controlled copy of this Data Sheet is the electronic read-only version located on the Cooper Bussmann Network Drive. All other copies of this document are by definition uncontrolled. This bulletin is intended to clearly present comprehensive product data and provide technical information that will help the end user with design applications. Cooper Bussmann reserves the right, without notice, to change design or construction of any products and to discontinue or limit distribution of any products. Cooper Bussmann also reserves the right to change or update, without notice, any technical information contained in this bulletin. Once a product has been selected, it should be tested by the user in all possible applications.

Life Support Policy: Cooper Bussmann does not authorize the use of any of its products for use in life support devices or systems without the express written approval of an officer of the Company. Life support systems are devices which support or sustain life, and whose failure to perform, when properly used in accordance with instructions for use provided in the labeling, can be reasonably expected to result in significant injury to the user.