

4

3

2

1


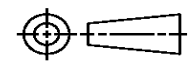
THIS DRAWING IS UNPUBLISHED. RELEASED FOR PUBLICATION
© COPYRIGHT ALL RIGHTS RESERVED.

LOC		DIST		REVISIONS			
P	LTR	DESCRIPTION		DATE	DWN	APVD	
	B1	ECR-14-002309		14FEB2014	GK	HMR	

REPLACED BY OCEAN STYLE APPLICATOR PART NUMBER 2151488-1

FOR REPLACEMENT PARTS FOR APPLICATOR 1528580
REFER TO ADDITIONAL PAGE(S). SPARE PARTS KIT (IF LISTED)
WILL REMAIN AVAILABLE.

THE REPLACEMENT OCEAN STYLE APPLICATOR HAS THE
SAME TERMINATOR/PRESS INTERFACE AS APPLICATOR
1528580

THIS DRAWING IS A CONTROLLED DOCUMENT.		DWN	GOPALAKRISHNA HV			TE Connectivity		
DIMENSIONS:		CHK	RAGHAVENDRA			NAME		
		TOLERANCES UNLESS OTHERWISE SPECIFIED:		APVD	FINE ADJ SIDE FD HD-I APPL			
		0 PLC ±	1 PLC ±	PRODUCT SPEC		APPLICATION SPEC		
MATERIAL		2 PLC ±	3 PLC ±	4 PLC ±	SIZE	CAGE CODE	DRAWING NO	RESTRICTED TO
FINISH		ANGLES ±	WEIGHT		A3		©- 1528580	
CUSTOMER DRAWING				SCALE	SHEET	1	OF	2
				REV	B1			

PART NUMBER	REV	FIRST USED	TERMINATOR	FEED TYPE	DESCRIPTION
1528580-1	B	-	LEADMAKER	MECH POST FEED	CUTS CARRIER
1528580-2	B	-	BENCH	MECH PRE FEED	CUTS CARRIER
1528580-6	B	-	LEADMAKER	MECH POST FEED	CONTINUOUS CARRIER
7-1528580-1	B	-	LEADMAKER	MECH POST FEED	-1 AND SPARE PARTS
7-1528580-2	B	-	BENCH	MECH PRE FEED	-2 AND SPARE PARTS
7-1528580-6	B	-	LEADMAKER	MECH POST FEED	-6 AND SPARE PARTS
7-1528580-7	A	-	-	-	SPARE PARTS KIT

CRIMP DATA AMP TERMINAL AMP CRIMP SPECS

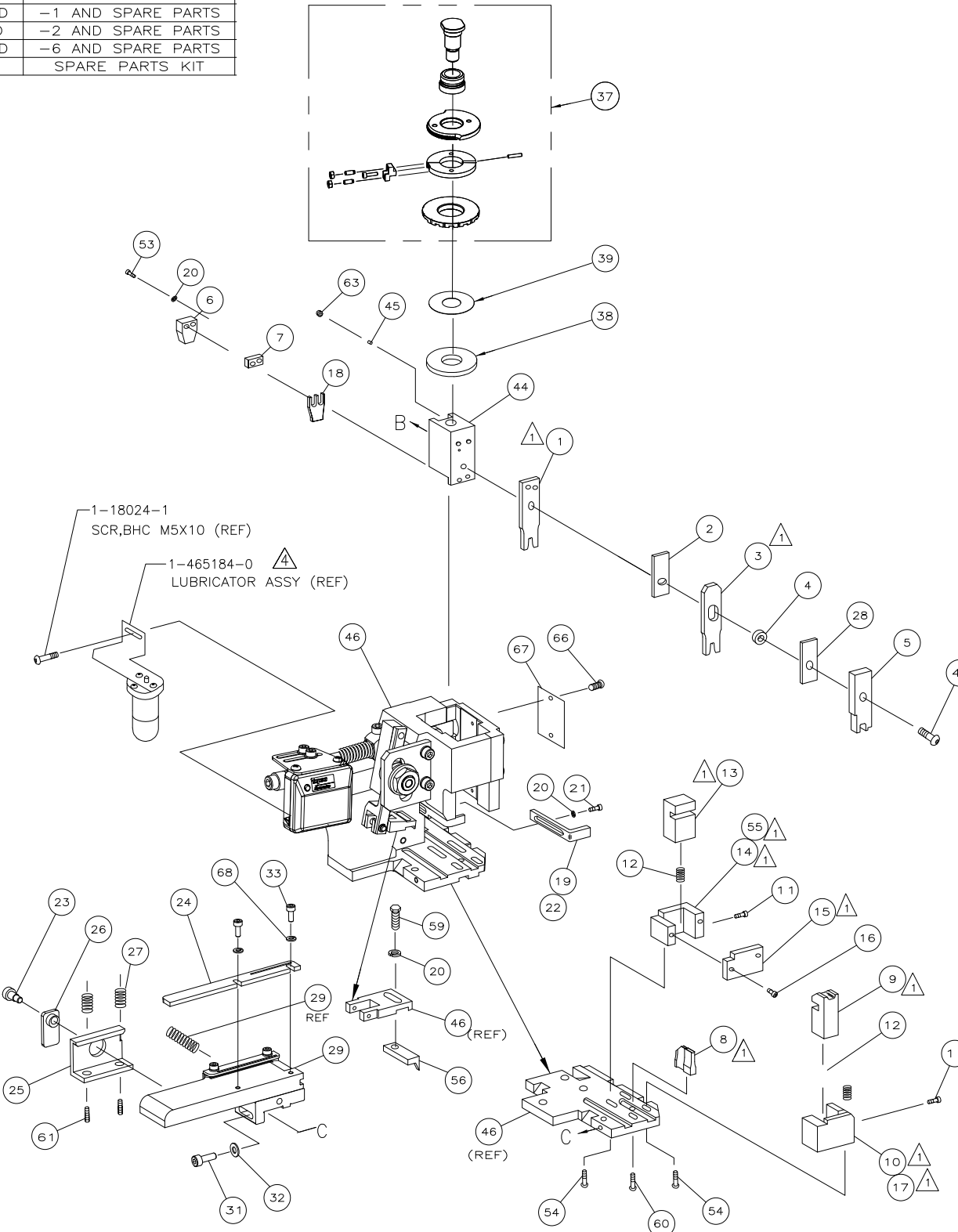
TERMINAL NAME: CONTACT, REC, CRIMP SNAP-IN, AMPMODU SHORT POINT			
CRIMP	SIZE	TYPE	RANGE
WIRE	1.07 [.042 IN]	F	26-22 AWG
INSUL	1.57 [.062 IN]	0	0.64-1.52 [.025-.060 IN]
WIRE STRIP LENGTH		APPL INSTRUCTION	
3.18-3.96 [.125-.156 IN]		408-8322 & 408-8490	
TERMINAL APPL SPEC	114-25038		FEED 6.35 [.250 IN]

TERMINALS APPLIED				
104480	-	-	-	-
-	-	-	-	-
-	-	-	-	-
-	-	-	-	-
-	-	-	-	-
-	-	-	-	-
-	-	-	-	-
-	-	-	-	-
-	-	-	-	-
-	-	-	-	-

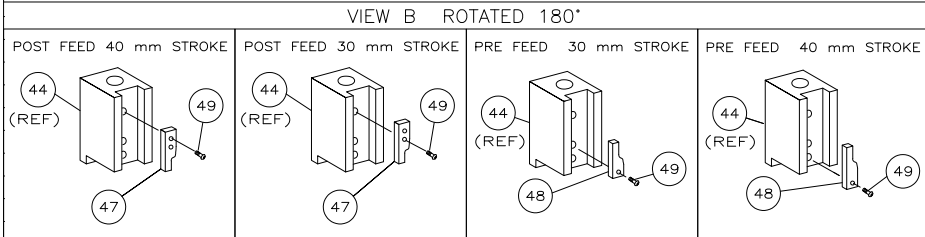
WIRE SIZE mm ² AWG	CRIMP HEIGHT *	REF SETTING
22 AWG	0.91 ±0.05 [.036 ±0.002 IN]	B 5
0.30mm ²	0.89 ±0.05 [.035 ±0.002 IN]	B 8
24 AWG	0.81 ±0.05 [.032 ±0.002 IN]	C 3
26 AWG	0.76 ±0.05 [.030 ±0.002 IN]	C 6
-	-	-
-	-	-
-	-	-
-	-	-
-	-	-
-	-	-
-	-	-
-	-	-
-	-	-

SET UP GAGE 458637-3	LAYOUT L1426206
----------------------	-----------------

- 1 RECOMMENDED SPARE PARTS.
- 2. GREASE RAM, CAM, CAM FOLLOWER AND FEED ROD LIGHTLY.
- 3. LUBRICATE DAILY PER THE APPLICATOR INSTRUCTION SHEET SUPPLIED WITH THE APPLICATOR.
- 4 CERTAIN TERMINALS REQUIRE LUBRICATION. REFER TO THE APPLICATOR INSTRUCTION SHEET FOR MORE INFORMATION.



* WARNING:
ON INSTALLATION, SET WIRE DISC TO LARGEST WIRE SIZE SETTING. USE OF SETTINGS BELOW MIN REQUIRED CRIMP HEIGHT SETTING WILL CAUSE DAMAGE TO CRIMP TOOLING.



QTY	REQD	PER	ASSY	PART NO	DESCRIPTION	ITEM NO
-	1	1	1	1	1	73
-	1	1	1	1	1	72
-	1	1	1	1	1	71
-	-	-	-	-	-	70
-	2	2	2	2	2	69
-	1	1	1	1	1	68
-	2	2	2	2	2	67
-	2	2	2	2	2	66
-	-	-	-	-	-	65
-	1	1	1	1	1	64
-	2	2	2	2	2	63
-	1	1	1	1	1	62
-	1	1	1	1	1	61
-	1	1	1	1	1	60
-	1	1	1	1	1	59
-	-	-	-	-	-	58
-	-	-	-	-	-	57
-	1	1	1	1	1	56
-	1	-	-	1	-	55
-	4	4	4	4	4	54
-	2	2	2	2	2	53
-	-	-	-	-	-	52
-	-	-	-	-	-	51
-	-	-	-	-	-	50
-	1	1	1	1	1	49
-	-	1	-	-	1	48
-	1	-	1	-	1	47
-	1	1	1	1	1	46
-	1	1	1	1	1	45
-	1	1	1	1	1	44
-	-	-	-	-	-	43
-	-	-	-	-	-	42
-	1	1	1	1	1	41
-	1	1	1	1	1	40
-	1	1	1	1	1	39
-	1	1	1	1	1	38
-	1	1	1	1	1	37
-	-	-	-	-	-	36
-	-	-	-	-	-	35
-	2	2	2	2	2	34
-	1	1	1	1	1	33
-	1	1	1	1	1	32
-	1	1	1	1	1	31
-	-	-	-	-	-	30
-	1	1	1	1	1	29
-	1	1	1	1	1	28
-	2	2	2	2	2	27
-	1	1	1	1	1	26
-	1	1	1	1	1	25
-	1	1	1	1	1	24
-	1	1	1	1	1	23
-	1	-	1	-	1	22
-	1	1	1	1	1	21
-	4	4	4	4	4	20
-	-	1	-	1	-	19
-	1	1	1	1	1	18
-	1	-	-	1	-	17
-	2	2	2	2	2	16
-	1	1	1	1	1	15
-	-	1	-	1	1	14
-	1	1	1	1	1	13
-	2	2	2	2	2	12
-	2	2	2	2	2	11
-	-	1	-	1	1	10
-	1	1	1	1	1	9
-	1	1	1	1	1	8
-	1	1	1	1	1	7
-	1	1	1	1	1	6
-	1	1	1	1	1	5
-	1	1	1	1	1	4
-	1	2	2	2	1	3
-	1	1	1	1	1	2
-	1	2	2	2	1	1
-77	-76	-72	-71	-6	-2	-1

QTY REQD PER ASSY				PARTS LIST			
THIS DRAWING IS A CONTROLLED DOCUMENT.							
DIMENSIONS: INCHES		TOLERANCES UNLESS OTHERWISE SPECIFIED:		APPROVALS: [Signatures]		DRAWING NO	
0 PLC ± .010		1 PLC ± .005		2 PLC ± .003		3 PLC ± .002	
4 PLC ± .001		5 PLC ± .0005		6 PLC ± .0002		7 PLC ± .0001	
MATERIAL:		FINISH:		WEIGHT:		RESTRICTED TO:	
				SCALE:		SHEET 1 OF 1	
CUSTOMER DRAWING				SCALE: 1:1			