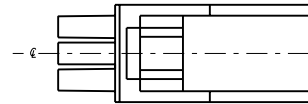
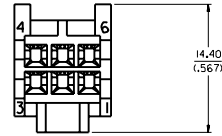
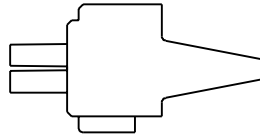
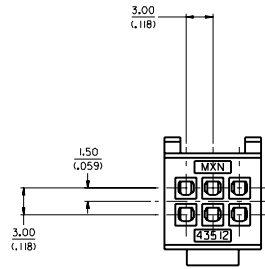
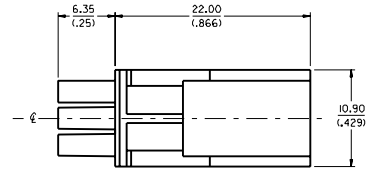


NOTES:

1. MATERIAL: POLYESTER (PBT), UN-FILLED, UL 94V-0. COLOR: BLACK
2. FINISH: NONE
3. PRODUCT SPEC. : PS-435 IO-002
4. ALL DIMENSIONS SHOWN FOR REFERENCE ONLY.
5. USES STANDARD 43030 MICRO-FIT FEMALE CRIMP TERMINALS.
7. PART MATES WITH 43515-0001 PLUG POD.
8. PART TO BE USED WITH 43838-0*** RECEPTACLE SHROUD.
(SEE SHROUD DRAWING FOR ASSEMBLY INFORMATION)



MOVED LETTERING EC NO. LCR 1959-10594 DRWING POL GAR 99032711 CHK: COMERC I 99032715 APPR: COMERC I 99032715	QUALITY SYMBOLS MAJOR ∇ CRITICAL ∇ MINOR ∇	GENERAL TOLERANCES: (UNLESS SPECIFIED) mm INCH 4 PLACES ± 0.15 $\pm .006$ 3 PLACES ± 0.25 $\pm .010$ 2 PLACES ± 0.38 $\pm .015$ 1 PLACE ± 0.51 $\pm .020$	SCALE: 4:1 DESIGN UNITS: <input checked="" type="checkbox"/> mm <input type="checkbox"/> INCH DRAWN BY & DATE: COMERC I 97/10/06 CHECKED BY & DATE: COMERC I 97/10/06 APPROVED BY & DATE: FRY 97/10/10	DIMENSIONS: <input checked="" type="checkbox"/> mm <input type="checkbox"/> INCH <input type="checkbox"/> mm <input type="checkbox"/> INCH PROJECTION: <input checked="" type="checkbox"/> THIRD ANGLE	SHT 1 REV 1 REVISION ON CAD ONLY
	TITLE: MICRO-FIT RECEPTACLE 6 CIRCUIT, DUAL ROW COMPODRE SYSTEM	MATERIAL NO. 43512-0001 DRAWING NO. SD-43512-001	SHEET NO. 1 OF 1 SIZE D		
	CAD FILENAME: S4351201.DGN DRAFT WHERE APPLICABLE MUST REMAIN WITHIN DIMENSIONS	THIS DRAWING CONTAINS INFORMATION THAT IS PROPRIETARY TO MOLEX INCORPORATED AND SHOULD NOT BE USED WITHOUT WRITTEN PERMISSION.	MOLEX INCORPORATED		
	REV A	MAJOR ∇ CRITICAL ∇ MINOR ∇	ANGULAR: \pm 0		