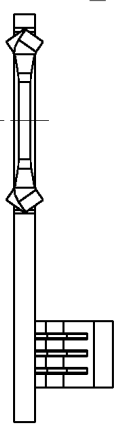
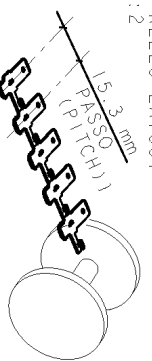


DISSEGNO DEL CODICE 284673-1
 (PN. 284673-1 AS SHOWN)

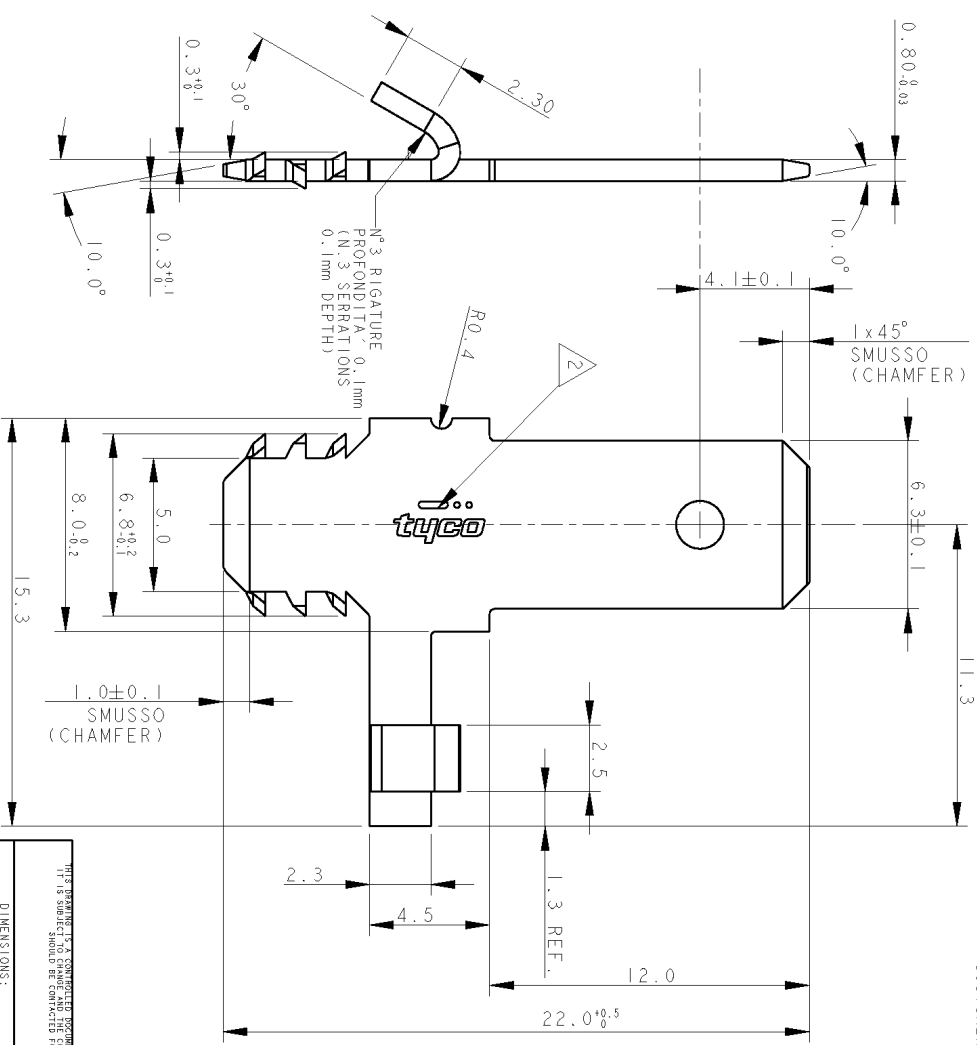


OFF FROM REELS LAYOUT
 SCALE 1:2



USCITA DA SINISTRA
 CODICE CLIENTE 48380)
 (LEFT SIDE EXIT FROM REEL
 CUSTOMER CODE 48380)

| REV. I S T O N S | | DATE | DWH | APVD |
|------------------|-----|---|-----------|-----------|
| P | LTR | DESCRIPTION | | |
| A | | PRIMA EMISSIONE - FIRST ISSUE FOR EC ET00-0066-01 | 13MAR2002 | C.C. D.M. |
| B | | RELEASE FOR PRODUCTION FOR EC ET00-0170-03 | 25SEP2003 | AV 6.T. |
| C | | ADDED P/N 284673-2 | 21NOV2005 | AV 6.T. |
| D | | ADDED UNPLATED VERSION | 24SEP.08 | CC PEG |



NOTE GENERALI:

- 1) MATERIALE: OTTONE 0167 (MATERIAL: BRASS 0167)
- 2) POSIZIONE DEL MARCHIO IDENTIFICAZIONE COSTRUTTORE TYCO (TYCO TRADEMARK LOCATED APPROX. AS SHOWN)
- 3) PER QUESTI ITEMS TRATTAMENTO DI FINITURA DEI CONTATTI STAGNATURA (FOR THIS ITEM FINISH: TIN PLATED CONTACTS)
- 4) PRODOTTO, CONFEZIONATO SU BOBINE IN CARTONE DA 12" CON CARTA INTERPOSTA, 4000 PEZZI/BOBINA (PRODUCT PACKAGED ON 12" CARTON REELS WITH INTERPOSED PAPER LAYER, 4000 PCS PER EACH REEL)
- 5) PRODOTTO, CONFEZIONATO SU BOBINE IN CARTONE DA 24" CON CARTA INTERPOSTA, 3000 PEZZI/BOBINA (PRODUCT PACKAGED ON 24" CARTON REELS WITH INTERPOSED PAPER LAYER, 3000 PCS PER EACH REEL)

6) AD OGNI ORDINE CLIENTE PIAZZATO SU QUESTO CODICE DEVE CORRISPONDERE UNO EQUIVALENTE SUL CODICE 284672-1 (WHEN A CUSTOMER ORDER IS PLACED ON THIS ITEM AN EQUIVALENT ORDER, FOR THE SAME QUANTITY ON PN 284672-1 MUST BE PLACED)

7) VERSIONE SENZA FINITURA SUPERFICIALE IN OTTONE NUDO. A CAUSA DELL'ASSENZA DI RIVESTIMENTO GALVANICO PROTETTIVO, SI POTREBBE FORMARE OSSIDO SULLA SUPERFICIE DEI TERMINALI CAPACE DI CAUSARE UN INCREMENTO DELLA RESISTENZA DI CONTATTO. UNPLATED BRASS VERSION - DUE TO ABSENCE OF PLATING LAYER OXIDATION ON SURFACE OF THE TERMINAL COULD APPEARS, CAUSING INCREASE OF CONTACT RESISTANCE.

| | | |
|-------|---|------------|
| 5 | 7 | 1-284673-2 |
| 4 | 7 | 1-284673-1 |
| 5 | 3 | 284673-2 |
| 4 | 3 | 284673-1 |
| NOTES | | PART NO |

| | |
|---|--|
| THIS DRAWING IS A CONTROLLED DOCUMENT FOR TYCO ELECTRONICS CORPORATION. IT IS SUBJECT TO THE SAME CONTROL AND THE SAME REVISIONS AS THE ORGANIZATION'S CONTROLLED DOCUMENTS. THE FORMING AND THE FORMING ORGANIZATION'S CONTROLLED DOCUMENTS. | |
| DIMENSIONS: | MM |
| TOLERANCES UNLESS OTHERWISE SPECIFIED: | 0 PLC ±0.5 1 PLC ±0.2 2 PLC ±0.1 3 PLC ± 4 PLC ± ANGLES ±5° |
| MATERIAL | VEDI NOTE (SEE NOTE) |
| FINISH | |
| DWG | C. CORDOLA 11DEC2000 |
| CHK | D. MOTTA 11DEC2000 |
| APVD | G. TURCO 11DEC2000 |
| PRODUCT SPEC | |
| APPLICATION SPEC | |
| WEIGHT | |
| NAME | 6, 3x0.8 TAB CONTACTS |
| FOR SPECIAL APPLICATION - LEFT LAYOUT | |
| SIZE | A3 |
| CAGE CODE | 00779 |
| DRAWING NO | 284673 |
| RESTRICTED TO | |
| SCALE | 5:1 |
| SHEET | 1 OF 1 |
| REV | D |