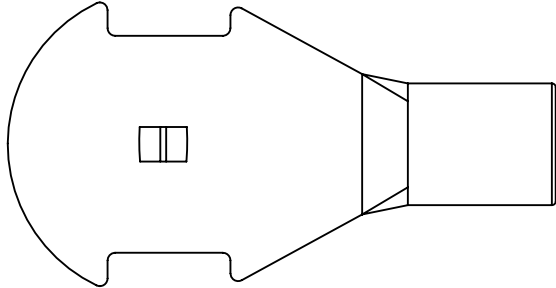


THIS COPY IS PROVIDED ON A RESTRICTED BASIS AND IS NOT TO BE USED IN ANY WAY DETRIMENTAL TO THE INTERESTS OF PANDUIT CORP.

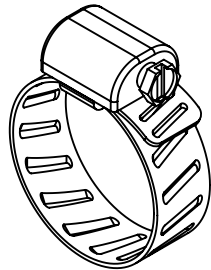
| KIT<br>PART NUMBER | CLAMP<br>PART NUMBER |
|--------------------|----------------------|
| ACGK               | #10                  |
| ACGKX              | #16                  |

NOTES:

1. KIT INCLUDES ARMORED CABLE GROUNDING TERMINAL AND MECHANICAL CLAMP
2. FOR USE WITH UNJACKETED ARMOR CABLE. DIAMETER RANGE - .440" - 1.250".




ARMORED CABLE GROUNDING TERMINAL (QTY. 1)



#10 MECHANICAL CLAMP, 9/16" - 1-1/16" DIAMETER RANGE (QTY. 1)

#16 MECHANICAL CLAMP, 15/16" - 1-1/2" DIAMETER RANGE (QTY. 1)

|            |             |           |            |  |                 |           |            |   |
|------------|-------------|-----------|------------|--|-----------------|-----------|------------|---|
| 03         | 5/11        | JHNU      | RWK        | REVISED NOTE 2: 1.250" WAS 1.000"                                | N41755BB-C41755 | RGB       | RGB        |  <b>PANDUIT CORP. TINLEY PARK, ILLINOIS</b><br>ARMORED CABLE GROUNDING KITS<br>(ACGK, ACGKX)<br>CUSTOMER DRAWING |
| 02         | 5/11        | JHNU      | RWK        | REMOVED TERMINAL PART NUMBER COLUMN<br>REMOVED CLAMP PART NUMBER | N41755BB-C41755 | FLD       | FLD        |   |
| 01         | 4/11        | JHNU      | RWK        | ADDED PART NUMBER ACGKX<br>ADDED PART NUMBER TABLE               | N41755BB-C41755 | FLD       | FLD        |   |
| 00         | 6/08        | JHNU      | JMAR       | DRAWING RELEASED   |                 |           |            |   |
| <b>REV</b> | <b>DATE</b> | <b>BY</b> | <b>CHK</b> | <b>DESCRIPTION</b>   | <b>ECN</b>      | <b>-R</b> | <b>SUP</b> | DRAWN BY JHNU<br>CHK'D<br>SCALE NONE<br>DRAWING NO / CAD FILE C41755_03   |