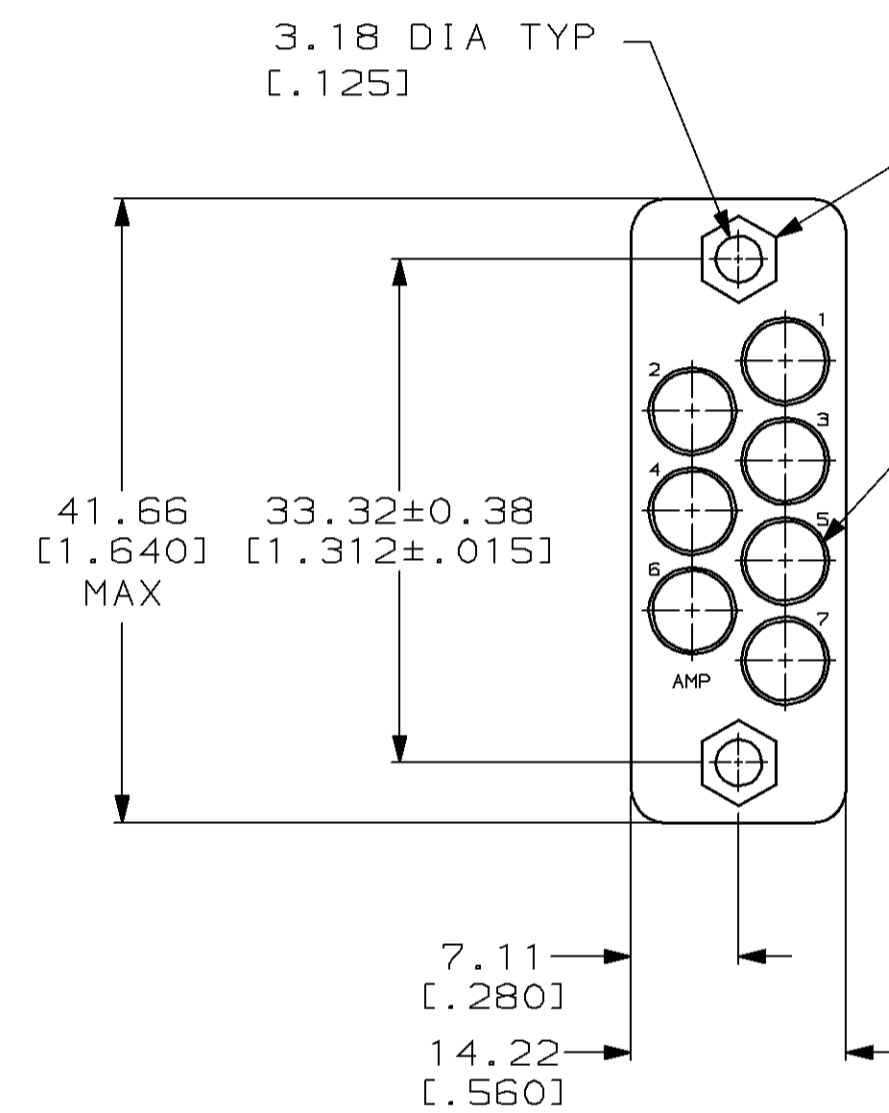
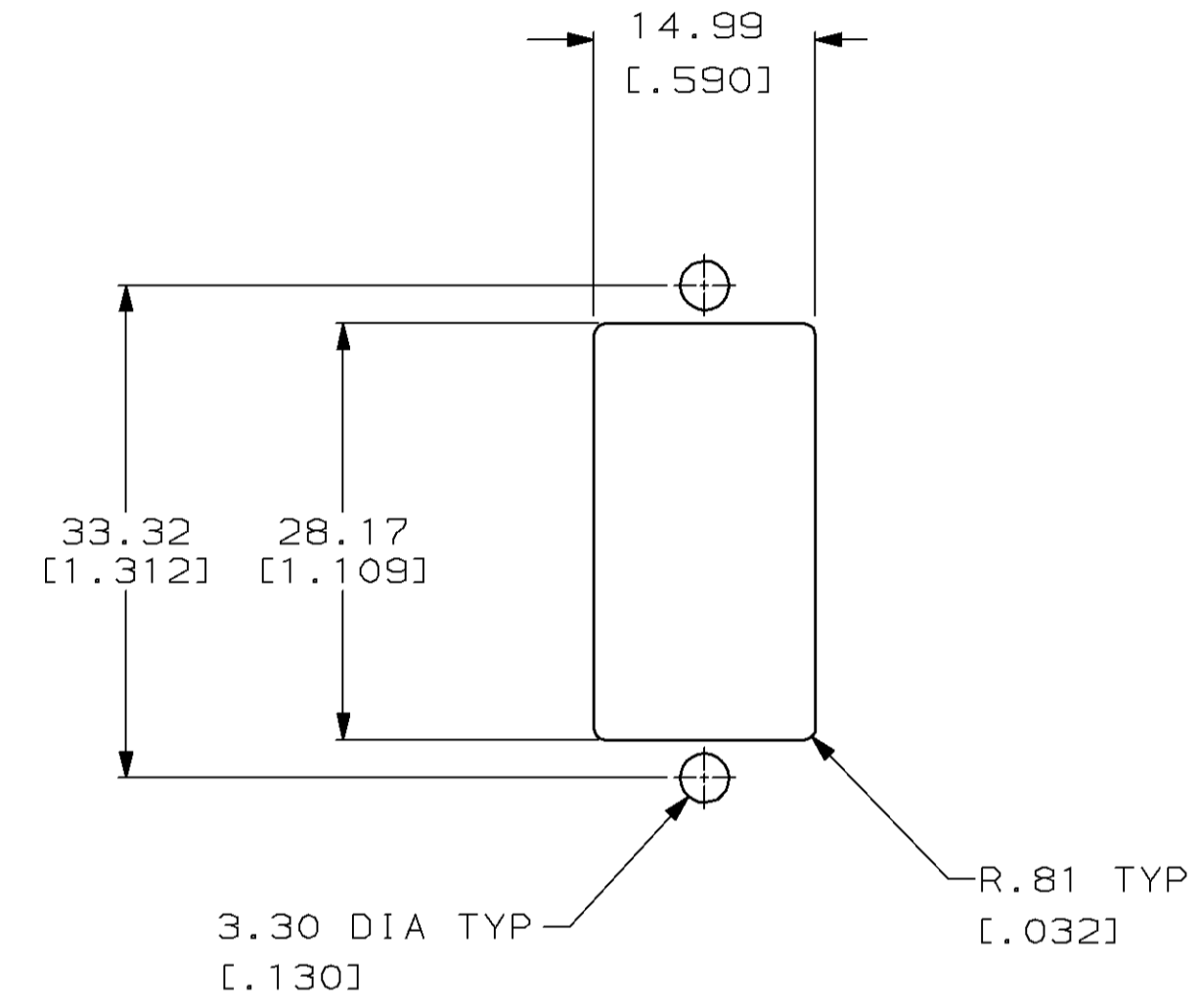
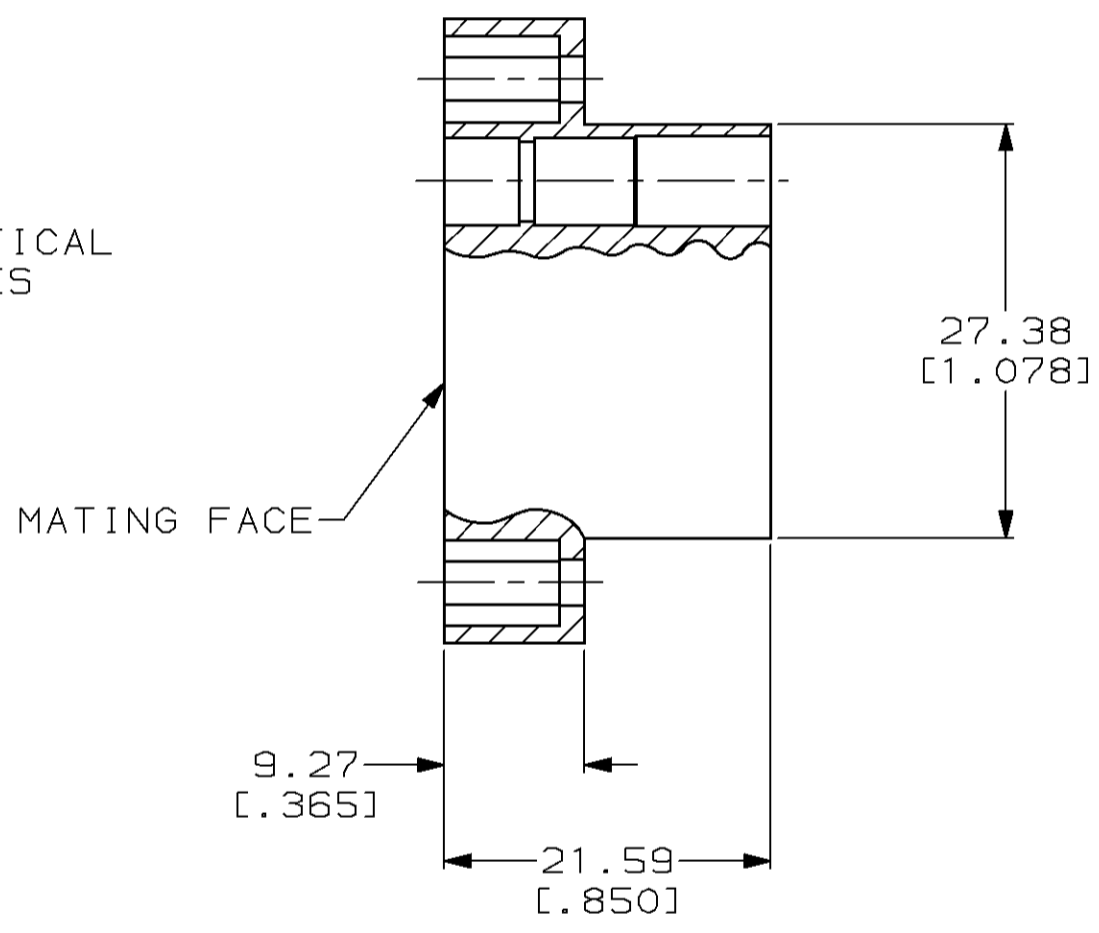


| Loc | DIST | P | F | ZONE | LTR | DESCRIPTION | DATE | APPD |
|-----|------|---|---|------|-----|-----------------------------|----------|------|
| AJ | 16 | | | | U | REACTIVATE PER 0630-0391-98 | 10-05-98 | MO |



4.90±.05 [.193±.002]
 HEX, 2 PLC, 7.62
 [.300] DEEP



SUGGESTED PANEL CUTOUT

| | |
|-----------------------------|-------------|
| PHENOLIC (MIL-M-14F), BLACK | 50063-1 |
| MATERIAL | PART NUMBER |

| | | | | | |
|---|--|----------------------------|--|---|--|
| DO NOT SCALE PRINT. UNLESS SPECIFIED DIMENSIONS IN mm [INCHES] TOLERANCES ON : 2 PLC DEC ± .20 [.008] 3 PLC DEC ± - ANGLES ± - | | DR 12/21/92 J.DAVIS | | AMP Incorporated Harrisburg, PA 17105-3608 | |
| MATERIAL SEE TABLE | | CHK 12/21/92 J.McCLEOD | | | |
| FINISH - | | APPD 12/21/92 J.DAVIS | | NAME 7 POSN MIN COAX MALE BLOCK | |
| - | | APPD 12/21/92 J.McCLEOD | | SIZE C | |
| - | | APPLICATION SPEC - | | CAGE CODE 00779 | |
| - | | - | | DRAWING NO G=50063 | |
| - | | WEIGHT .282 OZ. | | SCALE 2:1 | |
| - | | - | | SHEET 1 OF 1 | |

THIS DRAWING IS A CONTROLLED DOCUMENT FOR AMP INCORPORATED. IT IS SUBJECT TO CHANGE AND THE CONTROLLING ENGINEERING ORGANIZATION SHOULD BE CONTACTED FOR THE LATEST REVISION.