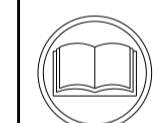


ATLANTIC VERSION TERMINATOR INTERFACE ADAPTER	PART NUMBER	REVISION	DESCRIPTION	FEED TYPE	APPLICATOR STYLE CONVERSION CHART						
					CONVERT TO	PART NUMBERS REQUIRED					
	2151719-1	A	FINE CRIMP HEIGHT ADJUST	MECHANICAL	PNEUMATIC FEED	2119950-1	1338685-1	5-18022-5	2119641-1	2119799-1	2063440-1
					SERVO LATCH PLATE	2119951-1	-	8-2151719-5	1901094-3	-	2168400-6 (QUANTITY 2)
					SMART APPLICATOR	2161326-1	-	8-2151719-4	-	-	-
	2151719-2	A	FINE CRIMP HEIGHT ADJUST	PNEUMATIC	MECHANICAL FEED	2119949-1	1338685-1	5-18022-5	2119653-1	-	-
					SERVO LATCH PLATE	2119951-1	-	8-2151719-5	1901094-3	-	2168400-6 (QUANTITY 2)
	2151719-5	A	FINE CRIMP HEIGHT ADJUST	SERVO LATCH PLATE	SERVO LATCH PLATE	MECHANICAL FEED	2119949-1	1338685-1	5-18022-5	2119653-1	-
						PNEUMATIC FEED	2119950-1	1338685-1	5-18022-5	2119641-1	2119799-1
2151719-6	A	NON-CRIMP HEIGHT ADJUST	SERVO LATCH PLATE	SERVO LATCH PLATE	-	-	-	-	-	-	
2151719-7	A	FINE CRIMP HEIGHT ADJUST	NONE	NONE	-	-	-	-	-	-	
7-2151719-7	A	CRIMP TOOLING KIT	-	-	-	-	-	-	-	-	

APPLICATOR DATA		
CRIMP SIZE	TYPE	
WIRE 1.50 mm [.059]	F	
INSUL 1.57 mm [.062]	O	
APPLICATOR INSTRUCTIONS 408-10389		

TERMINAL DATA: JST TERMINAL	JST SPECIFICATION		
TERMINAL NAME: TERMINAL, FEMALE A/T			
WIRE STRIP LENGTH 4.00-4.50 mm [.157-.177 IN]	INSULATION DIAMETER RANGE Ø1.50-1.90 mm [.059-.075 IN]		
TERMINAL APPLICATION SPECIFICATION	JST Rev -		
TERMINALS APPLIED			
TE TERMINAL	JST TERMINAL	TE TERMINAL	JST TERMINAL
1832719-1	SAIT-A03T-M064	1832718-1	SAITW-A03TGG-064
1832719-3	SAIT-A03GF-M064	1832718-2	SAITW-A03T-064
		1832718-3	SAITW-A03GF-064

WIRE SIZE	CRIMP HEIGHT mm [INCH]	CRIMP HEIGHT REFERENCE SETTING
20 AWG OR 0.50mm2	1.05+/-0.05 [.041+/- .002]	6.9
22 AWG OR 0.30mm2	0.95+/-0.03 [.037+/- .001]	7.9



- 1 RECOMMENDED SPARE PARTS
- 2 GREASE BEARING SURFACES LIGHTLY
- 3 LUBRICATE DAILY PER THE APPLICATOR INSTRUCTION SHEET SUPPLIED WITH THE APPLICATOR.
- 4 APPLICATOR SPECIFIC DATA TO BE ENTERED INTO BLANK MEMORY CHIP AT ASSEMBLY. SEE BELOW FOR PART NUMBER:
MECHANICAL FEED WITH "SMART APPLICATOR" CONVERSION: 8-2151719-4
PNEUMATIC FEED WITH "SMART APPLICATOR" CONVERSION: 8-2151719-4
SERVO FEED WITH "FINE CRIMP HEIGHT ADJUST": 8-2151719-5
SERVO FEED WITH "NON-CRIMP HEIGHT ADJUST": 8-2151719-6
- 5 ADJUSTMENT OF THE STRIPPER MAY BE REQUIRED WHEN MOVING THE APPLICATOR BETWEEN BENCH AND LEADMAKER APPLICATIONS.
- 6 APPLY PART NUMBER 1-23419-5 LOCTITE TO THREADS OF ITEMS 50 & 62. APPLY PART NUMBER 2-23419-6 LOCTITE TO THREADS OF ITEMS 242. FOR -6 ONLY APPLY PART NUMBER 1-23419-5 LOCTITE TO THREADS OF ITEM 37 & 50.
- 7 GREASE THREADS, GROOVE AND O-RING ON ITEMS 35 & 252.
- 8 MAGNET, ITEM 166 MUST BE ORIENTED CORRECTLY IN ORDER TO PROPERLY ACTUATE THE COUNTER.
- 9 CRIMP HEIGHT REFERENCE SETTING WAS THE SETTING USED WHEN THE APPLICATOR WAS QUALIFIED AT THE FACTORY. ADJUSTMENT MAY BE NECESSARY WHEN RUNNING APPLICATOR IN THE FIELD.
- 10 SPARE FEED CAM STORAGE LOCATION REFER TO INSTRUCTION SHEET FOR ADDITIONAL INFORMATION.
- 11 TO CONVERT THE APPLICATOR TO A NON-CARRIER CUTTING STYLE, REMOVE ITEM 13 AND ATTACH TO THE LOCATION ON THE BACK SIDE OF THE HOUSING. REFER TO INSTRUCTION SHEET FOR ADDITIONAL INFORMATION.
- 12 WHEN ASSEMBLING -6 NON-CRIMP HEIGHT ADJUST APPLICATOR USE SHIM PACK 2119957-2 TO ALIGN APPLICATOR'S MAXIMUM WIRE CRIMP HEIGHT AT NORMAL TERMINATOR SHUT HEIGHT

*WARNING
ON INSTALLATION, SET WIRE DISC, ITEM 40 TO LARGEST WIRE SIZE SETTING. USE OF SETTINGS BELOW MINIMUM REQUIRED CRIMP HEIGHT SETTING WILL CAUSE DAMAGE TO CRIMP TOOLING.

-	-	1	-	-	-	2119957-2	APPLICATOR SHIM PACK	260
-	1	-	1	1	1	8-21084-0	O-RING, .676 ID, .070 DIA. MAT.	252
-	-	-	-	1	-	2119640-1	PUSH ROD, AIR FEED	250
-	-	-	-	1	-	2079988-1	BUSHING, LCH5-12, MISUMI	249
-	-	-	-	1	-	2119641-1	FEED CAM, AIR FEED	248
-	1	-	1	1	1	2119798-1	DETENT PIN	247
-	1	-	1	1	1	1-22279-3	SPRING, COMPRESSION	246
-	-	1	-	-	-	2119758-1	RAM, AMP STYLE, SIDE FEED, NON-ADJ.	245
-	1	1	1	1	1	2119082-8	CAM, SNAIL, INSULATION ADJUSTMENT	244
-	1	1	1	1	1	2079764-1	WASHER, WAVE SPRING, CREST-TO-CREST	243
-77	-7	-6	-5	-2	-1	PART NO	DESCRIPTION	ITEM NO

ATLANTIC VERSION
Shown on sheets 1 of 4 & 2 of 4
(Pacific version shown on sheets 3 of 4 & 4 of 4)

SET UP GAUGE	LOC	DIST	REVISIONS			
2119599-1	A	66	#	DATE	BY	APP'D
			A	RELEASED	18JUN2013	BH
			A1	ECR-17-003241	07MAR2017	KH

#	QTY	QTY	QTY	QTY	QTY	QTY	DESCRIPTION	DATE	BY	APP'D
-	1	1	1	1	1	1	2119083-1	RETAINER, INSULATION DIAL		242
-	1	1	1	1	1	1	7-18023-7	SCR, SKT HD CAP M3 X 4.0		241
-	-	2	2	-	-	-	2168400-6	SHCS, LOW HEAD, RoHS, M5 X 16		240
-	-	-	-	-	1	-	2119580-1	MECHANICAL FEED ASSEMBLY		239
-	-	-	-	1	-	-	2063440-1	AIR FEED MODULE		238
-	-	1	1	-	-	-	2119740-2	TAG, IDENTIFICATION		213
-	-	1	1	-	-	-	1901094-3	SPACER, FEEDER		198
-	1	1	1	1	1	1	993111-1	PIN, SLOTTED SPRING 3.0 X 20.0		177
-	1	1	1	1	1	1	8-22280-7	SPRING, COMPRESSION		176
-	1	1	1	1	1	1	1752353-2	GUIDE PIN, HOLDDOWN		175
-	1	1	1	1	1	1	1901680-2	GUIDE PIN, HOLDDOWN		174
-	-	-	-	2	-	-	21045-3	RING, RETAIN, EXTERN, 3/16 CRESCENT		172
-	1	1	1	1	1	1	994969-1	MAGNET, RARE EARTH HIGH ENERGY		166
-	REF	REF	REF	REF	REF	REF	994970-2	COUNTER, MAGNETIC		164
-	-	-	-	1	-	-	240638-1	SPRING, FEED FINGER		163
-	-	-	-	1	-	-	3-23627-7	PIN, RETAIN, GRVD, 3/16 X .854		137
-	-	-	-	1	-	-	2119799-1	HOLDER, FEED FINGER, AF		136
-	-	REF	REF	-	-	-	SEE NOTE 4	MEMORY CHIP, PROGRAMMED		135
-	-	1	1	-	-	-	1633743-1	SERVO FEED LATCH ASM		133
-	1	1	1	1	1	1	1-18028-2	WASHER, FLAT, REG M4		119
-	-	REF	REF	-	-	-	2119944-1	FEED FINGER ASSEMBLY, SF		117
-	1	1	1	1	1	1	455888-5	SPACER, CRIMPER		82
-	1	1	1	1	1	1	22278-8	SPRING, COMPRESSION		77
-	1	1	1	1	1	1	854769-5	HOLDER, INS		74
-	1	1	1	1	1	1	2119956-1	DOCUMENTATION PACKAGE		71
-	1	1	1	1	1	1	2119791-9	DEPRESSOR, WIRE		70
-	1	1	1	1	1	1	2119943-1	WASHER, SPACER		69
-	1	-	-	1	1	1	2119740-1	TAG, IDENTIFICATION		67
-	2	2	2	2	2	2	2168078-1	SCREW, DRIVE, RH, RoHS, 2 x .188		66
-	1	-	1	1	1	1	2119793-1	LIMITER, ADJUSTMENT BOLT		63
-	3	-	3	3	3	3	992763-5	SCR, SET, SOC, CONE POINT, M3 x 4.0		62
-	1	1	1	1	1	1	2079383-4	SCR, BHSC, RoHS (M4 X 8)		60
-	-	-	-	1	1	1	5-18022-5	SCR, HEX HD CAP, M4 X 6.0		59
-	1	1	1	1	1	1	21028-2	PIN, SLOTTED SPRING .062 X .250		58
-	-	-	-	1	1	1	1338685-1	PAWL, FEED		56
-	4	4	4	4	4	4	2168400-1	SHCS, LOW HEAD, RoHS, M4 X 12		54
-	1	1	1	1	1	1	1-5018030-0	NUT, HEX, REG, RoHS, M3.5		52
-	1	1	1	1	1	1	1901681-1	HOLDDOWN, TERMINAL		51
-	1	1	1	1	1	1	1-1752354-7	STANDOFF, HOLD-DOWN		50
-	-	-	-	1	2	-	18023-9	SCR, SKT HD CAP M4 X 6.0		49
-	-	-	-	-	1	-	2119652-1	FEED CAM, PRE FEED		48
-	-	-	-	-	1	-	2119653-1	FEED CAM, POST FEED		47
-	1	1	1	1	1	1	2119656-9	APPLICATOR BASIC ASSEMBLY, SF		46
-	1	-	1	1	1	1	2119370-1	RAM, AMP STYLE, SIDE FEED		44
-	1	1	1	1	1	1	2079383-7	SCR, BHSC, RoHS (M8 X 25)		41
-	1	-	1	1	1	1	2119645-1	DISC, NUMBERED FA WIRE ADJUSTMENT		40
-	1	-	1	1	1	1	2119957-1	APPLICATOR SHIM PACK		39
-	1	1	1	1	1	1	2119644-1	RAM WASHER, PRECISION		38
-	1	1	1	1	1	1	2119085-1	FA HEAD, ATLANTIC STYLE		37
-	1	-	1	1	1	1	2119092-1	BOLT, ADJUSTMENT		35
-	1	1	1	1	1	1	1752356-3	SUPPORT, TERMINAL		34
-	2	2	2	2	2	2	2079383-5	SCR, BHSC, RoHS (M4 X 20)		33
-	1	1	1	1	1	1	2161328-1	HEX HEAD, FLANGED, M5 x 8mm LONG		32
-	1	1	1	1	1	1	1320908-6	SPACER, STRIP GUIDE		30
-	1	1	1	1	1	1	2119959-1	ASSEMBLY, STRIP GUIDE		29
-	1	1	1	1	1	1	455888-3	SPACER, CRIMPER		28
-	1	1	1	1	1	1	1320928-2	STRIP GUIDE		24
-	1	1	1	1	1	1	2168083-2	SCR, SKT HD CAP, RoHS, M4 X 8.0		21
-	1	1	1	1	1	1	1-18028-2	WASHER, FLAT, REG M4		20
-	1	1	1	1	1	1	2119533-1	STRIPPER, SIDE FEED		19
-	1	1	1	1	1	1	2119806-1	INSERT, SHEAR		13
-	1	1	1	1	1	1	3-22280-3	SPRING, COMPRESSION		12
-	1	1	1	1	1	1	1-356885-4	STOP, SHEAR		11
-	1	1	1	1	1	1	2119805-1	SHEAR HOLDER, FRONT		10
-	1	1	1	1	1	1	462006-6	FLOATING SHEAR, FRONT		9
-	-	-	-	-	-	-	-	-		7
-	-	-	-	-	-	-	-	-		6
-	1	1	1	1	1	1	2119780-9	DEPRESSOR, SHEAR		5
-	1	1	1	1	1	1	238011-4	BLOCK, CRIMPER SPACER		4
-	1	1	1	1	1	1	2119784-9	CRIMPER, INSULATION O PREMIUM		3
-	-	-	-	-	-	-	-	-		2
-	1	1	1	1	1	1	8-1490019-0	CRIMPER, WIRE PREMIUM		1
-77	-7	-6	-5	-2	-1	PART NO	DESCRIPTION	ITEM NO		

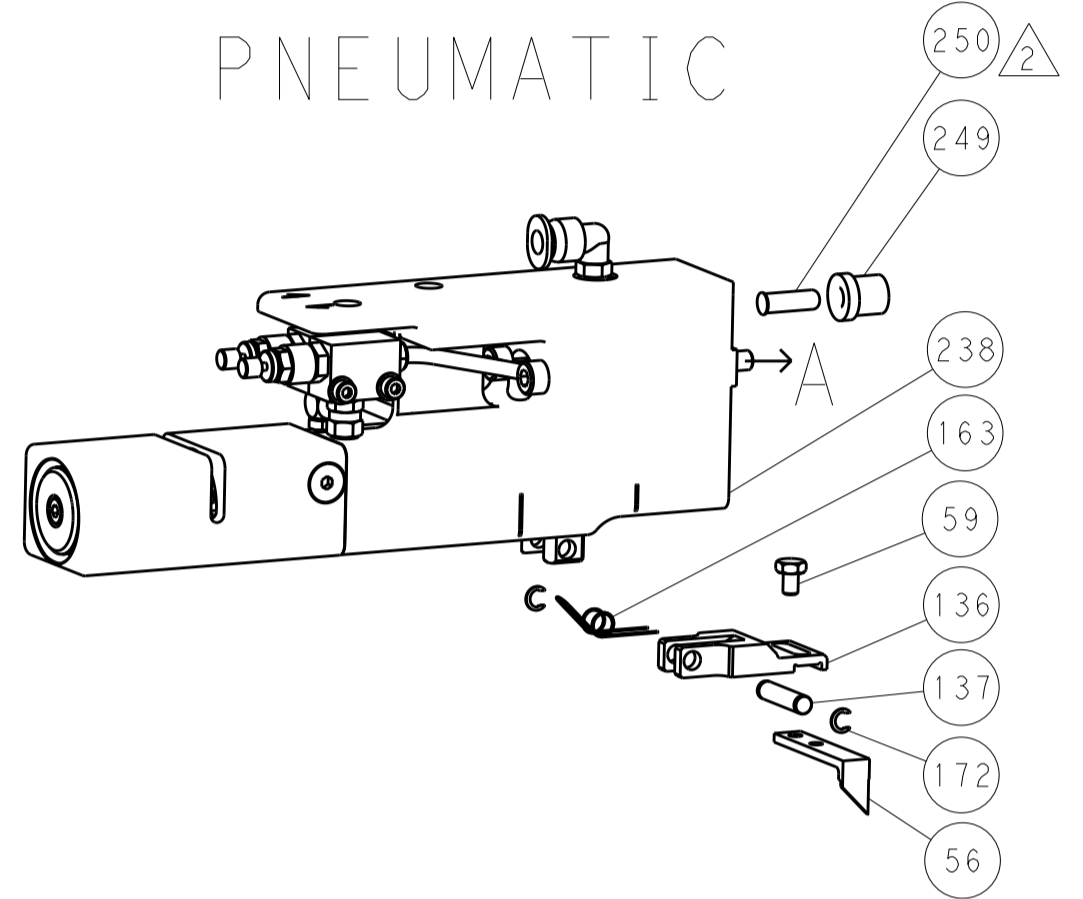
DIMENSIONS:	TOLERANCES UNLESS OTHERWISE SPECIFIED:	DATE	NAME
mm	0 PLC ± 1 PLC ± 2 PLC ± 3 PLC ± 4 PLC ± ANGLES ±	19 JUL 2012	C. MENEGHIN
		19 JUL 2012	P. BARLETTA
		19 JUL 2012	C. LIMA
MATERIAL:	FINISH:	WEIGHT:	Customer Accessible Production Drawing
			SCALE 1:2 SHEET 1 OF 4 REV A1

LOC		DIST		REVISIONS			
A	66	P	LTM	DESCRIPTION	DATE	OWN	APVD
		-	-	SEE SHEET 1	-	-	-

FEED TYPE MECHANICAL



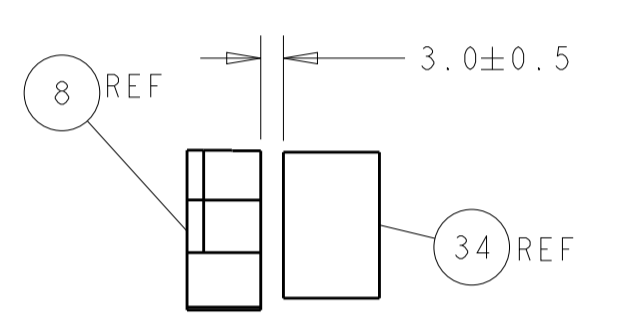
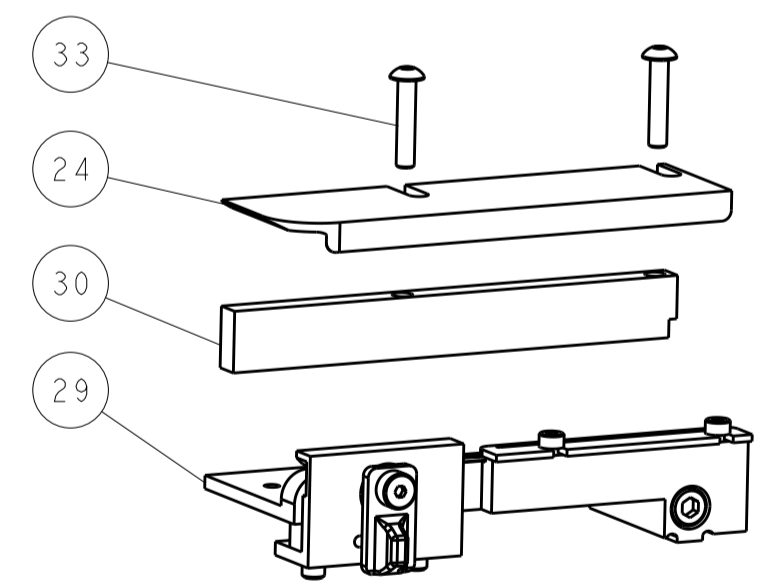
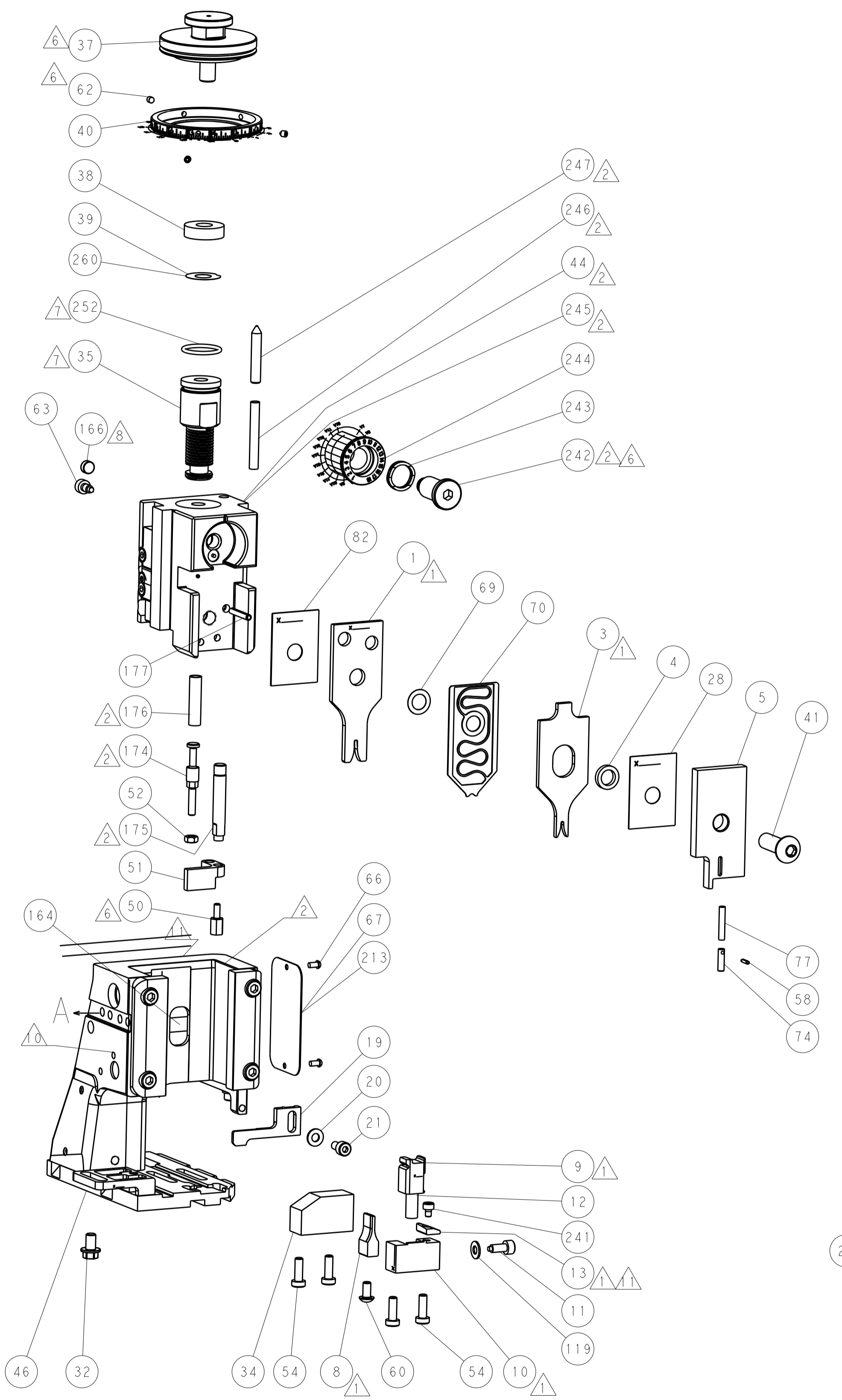
PNEUMATIC



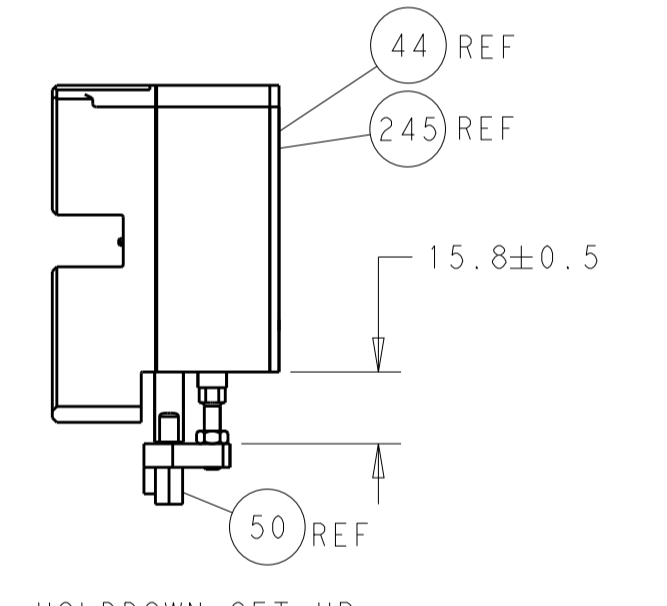
SERVO LATCH PLATE



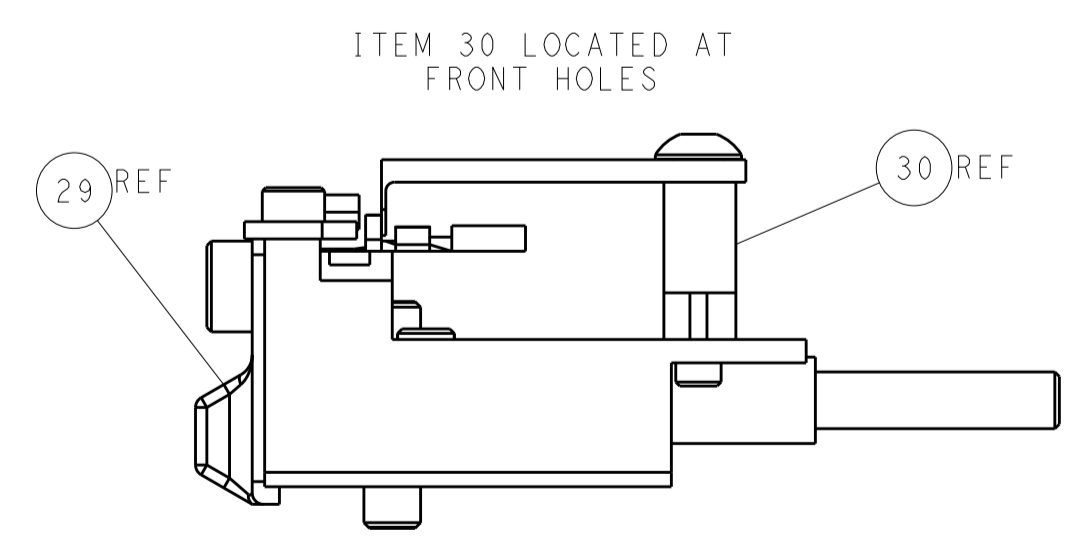
CAM POSITIONS



TERMINAL SUPPORT LOCATION



HOLDDOWN SET-UP



FEED TRACK POSITION
GUIDE BY INSULATION BARREL

ATLANTIC VERSION
 Shown on sheets 1 of 4 & 2 of 4
 (Pacific version shown on sheets 3 of 4 & 4 of 4)

DIMENSIONS:		TOLERANCES UNLESS OTHERWISE SPECIFIED:		DWN C. MENEGHIN 19 JUL 2012		TE Connectivity Harrisburg, PA 17105-3608
mm	0 PLC	±		CHK P. BARLETTA 19 JUL 2012	NAME Ocean Side Feed Applicator	
	1 PLC	±		APVD C. LIMA 19 JUL 2012	PRODUCT SPEC	RESTRICTED TO
	2 PLC	±			APPLICATION SPEC	SIZE CAGE CODE DRAWING NO
	3 PLC	±				A1 00779 ©=2151719
	4 PLC	±				Customer Accessible Production Drawing
MATERIAL	FINISH	WEIGHT	SCALE	SHEET	2 OF 4	REV A1

Table with columns: PART NUMBER, REVISION, DESCRIPTION, FEED TYPE, CONVERT TO, PART NUMBERS REQUIRED. Includes a diagram of the applicator.

Table titled 'APPLICATOR DATA' with columns: CRIMP, SIZE, TYPE. Includes 'APPLICATOR INSTRUCTIONS' 408-10389.

Terminal data and specifications. Includes 'TERMINAL DATA: JST TERMINAL', 'TERMINAL NAME: TERMINAL, FEMALE A/T', and 'TERMINALS APPLIED' table.

Table with columns: WIRE SIZE, CRIMP HEIGHT mm [INCH], CRIMP HEIGHT REFERENCE SETTING. Lists settings for 20 AWG and 22 AWG.

- RECOMMENDED SPARE PARTS
GREASE BEARING SURFACES LIGHTLY
LUBRICATE DAILY PER THE APPLICATOR INSTRUCTION SHEET SUPPLIED WITH THE APPLICATOR.
APPLICATOR SPECIFIC DATA TO BE ENTERED INTO BLANK MEMORY CHIP AT ASSEMBLY...

*WARNING
ON INSTALLATION, SET WIRE DISC, ITEM 40 TO LARGEST WIRE SIZE SETTING. USE OF SETTINGS BELOW MINIMUM REQUIRED CRIMP HEIGHT SETTING WILL CAUSE DAMAGE TO CRIMP TOOLING.

Table with columns: PART NO, DESCRIPTION, ITEM NO. Lists various parts like 'FINE ADJUST HEAD ASM, PACIFIC STYLE'.

PACIFIC VERSION
Shown on sheets 3 of 4 & 4 of 4
(Atlantic version shown on sheets 1 of 4 & 2 of 4)

Table with columns: SET UP GAUGE, DIST, REVISIONS. Includes 'LOC A', 'DIST 66', and revision history.

Large table with columns: P, LTR, DESCRIPTION, DATE, QTY, APVD. Lists numerous parts and their specifications.

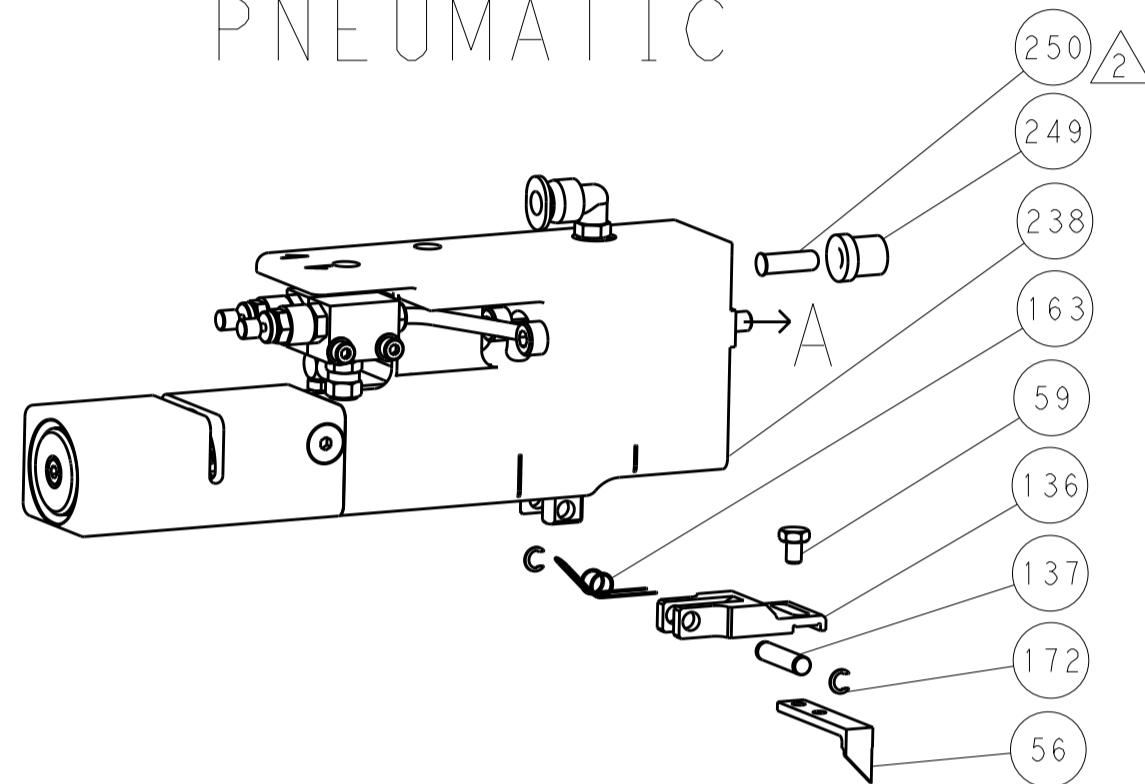
Customer Accessible Production Drawing form. Includes fields for DIMENSIONS, TOLERANCES, MATERIAL, FINISH, WEIGHT, and SCALE.

LOC		DIST		REVISIONS			
A	66	P	LTM	DESCRIPTION	DATE	OWN	APVD
		-		SEE SHEET 1			

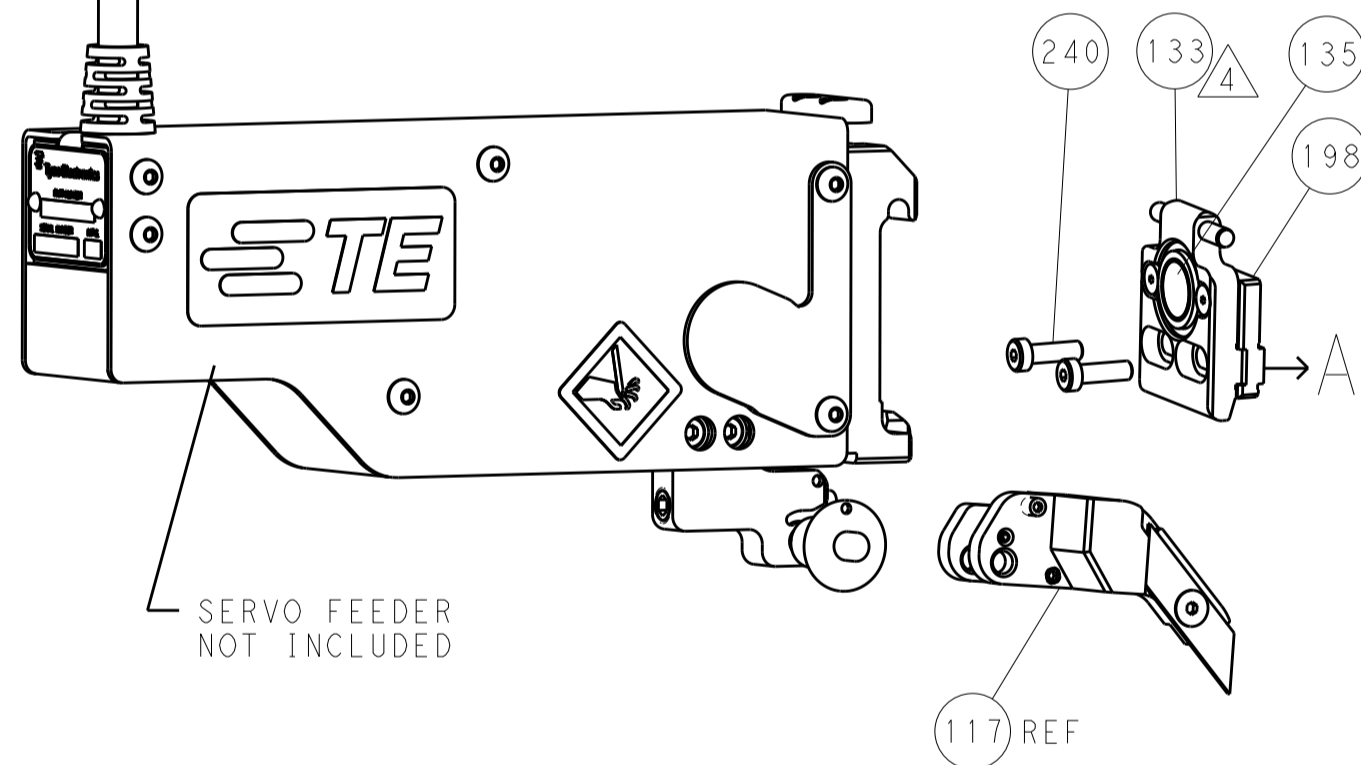
FEED TYPE MECHANICAL



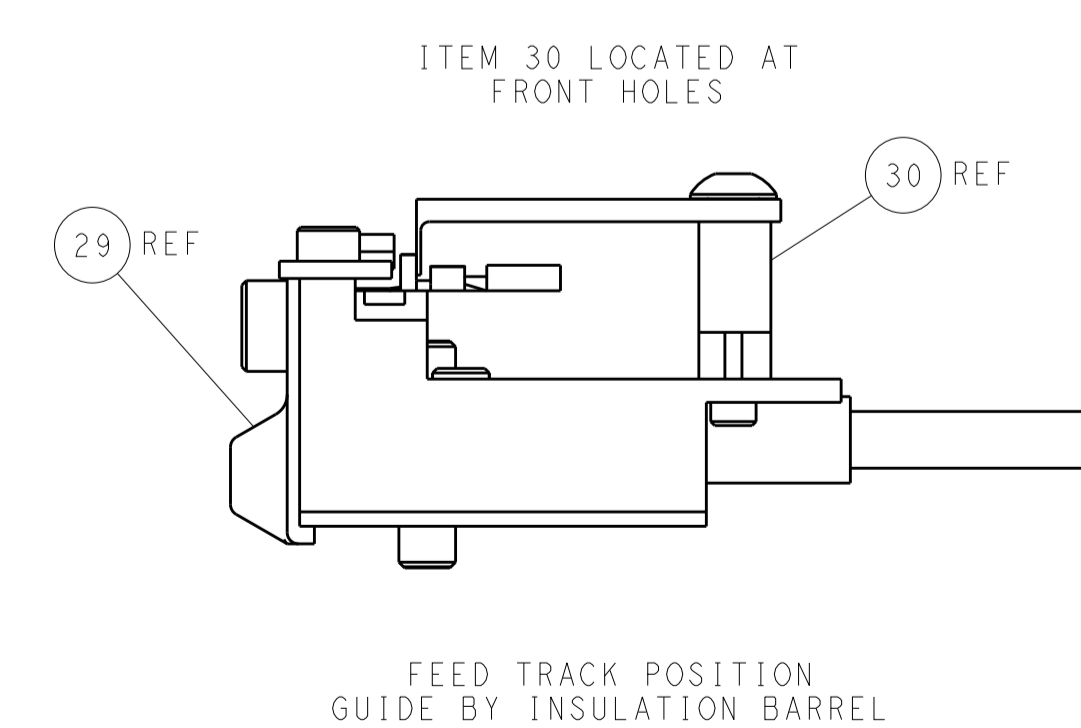
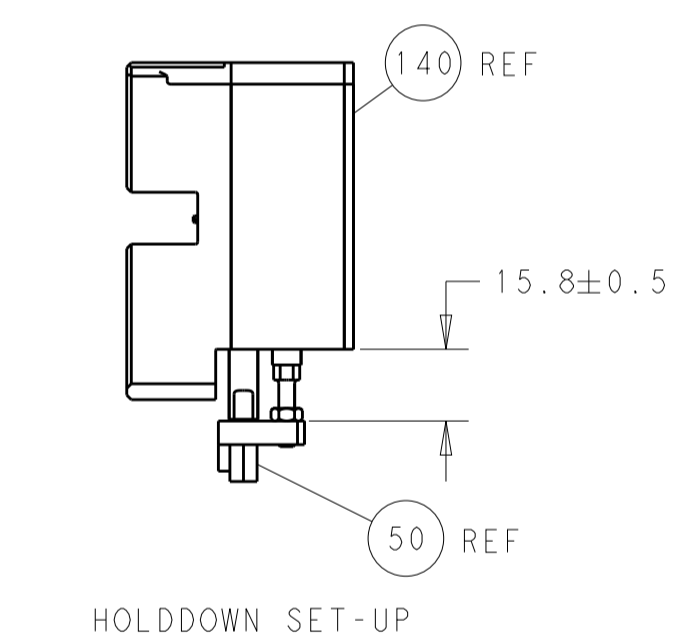
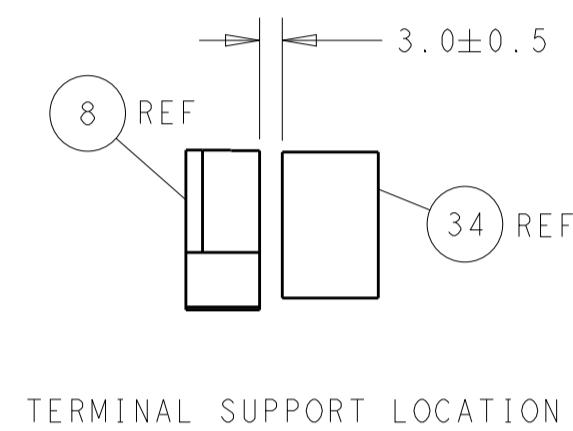
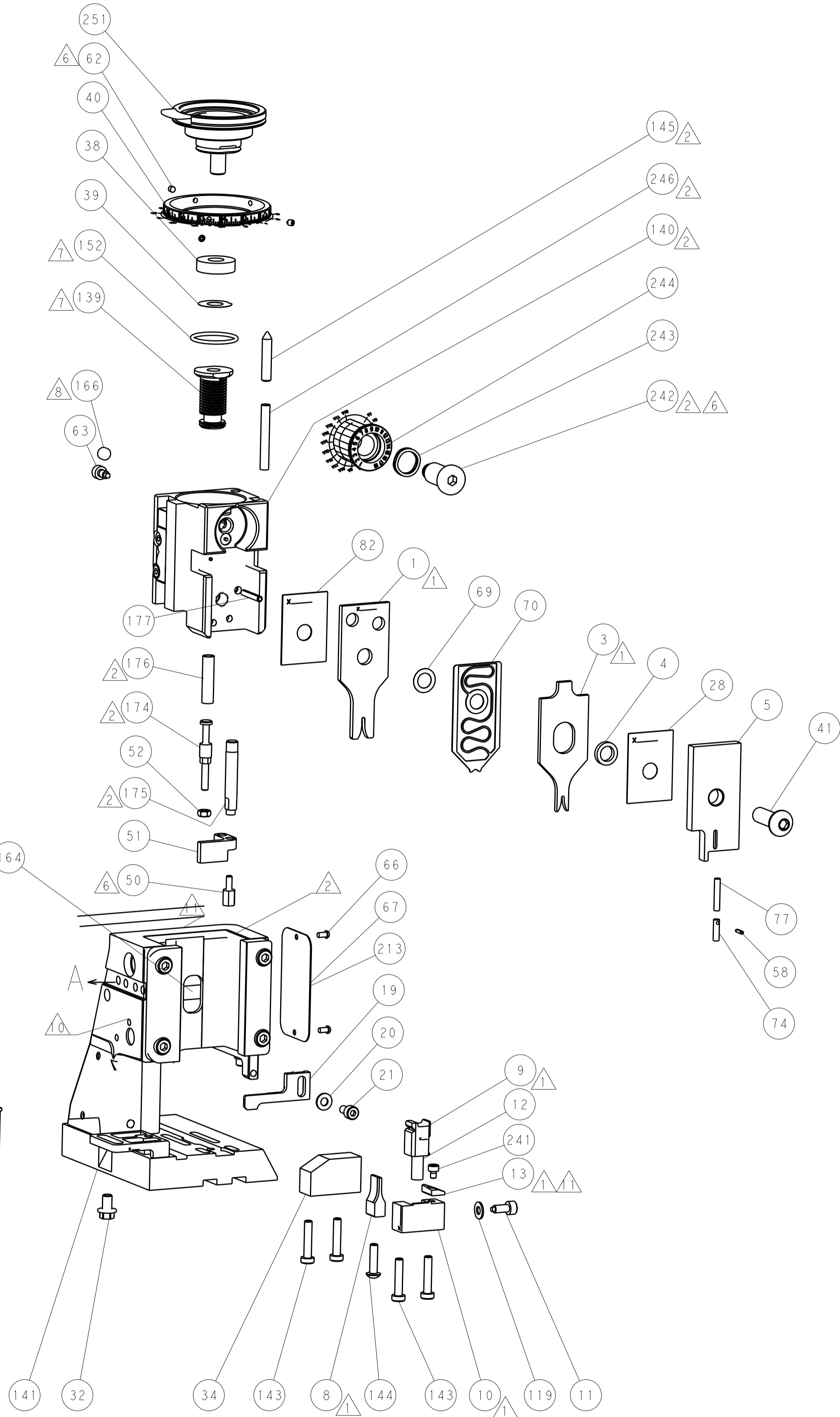
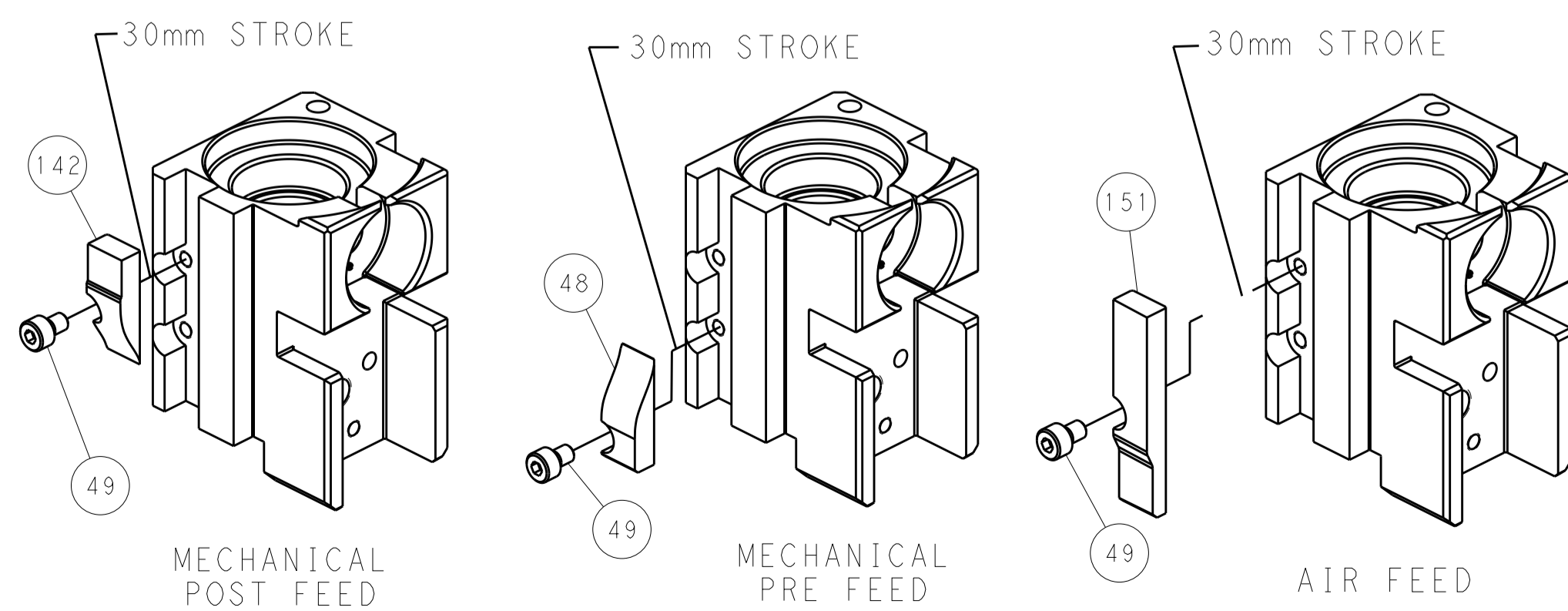
PNEUMATIC



SERVO LATCH PLATE



CAM POSITIONS



PACIFIC VERSION
 Shown on sheets 3 of 4 & 4 of 4
 (Atlantic version shown on sheets 1 of 4 & 2 of 4)

DIMENSIONS:		TOLERANCES UNLESS OTHERWISE SPECIFIED:		DWN: C. MENECHIN 19JUL2012		STE Connectivity	
mm	0 PLC	±		CHK: P. BARLETTA 19JUL2012	NAME: Ocean Side Feed Applicator		Harrisburg, PA 17105-3608
	1 PLC	±		APVD: C. LIMA 19JUL2012	SIZE: A1		Customer Accessible Production Drawing
	2 PLC	±		WEIGHT: 00779		SCALE: 1:2	
	3 PLC	±		CAGE CODE: 2151719		SHEET: 4 OF 4	REV: A1
	4 PLC	±		FINISH:			
	ANGLES	±					