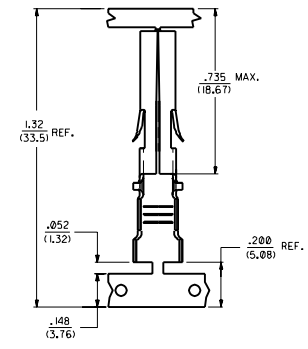
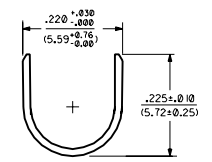
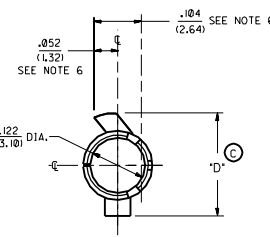
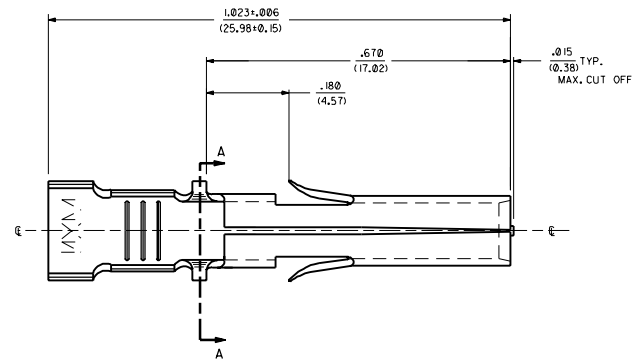


| ITEM NO. | CRIMP SIZE | MATERIAL | PLATING | PACKAGING | "D" |
|------------|------------|---|--------------------------------------|-----------------|----------------|
| 42825-4001 | 18 AWG | .0160±.0005/(0.406±0.013) THICK BRASS ALLOY *C23000 | PRE-TINNED .000020 (0.0005) MIN. TIN | SHIPPED ON REEL | .225 (5.72) |
| 42825-4002 | 12 AWG | | | SHIPPED LOOSE | .238 (6.05) |
| 42825-4003 | 12 AWG | | | SHIPPED ON REEL | |
| 42825-4004 | 18 AWG | | | SHIPPED LOOSE | C |
| 42825-4005 | 12 AWG | | | SHIPPED ON REEL | |
| 42825-4006 | 12 AWG | | | SHIPPED LOOSE | |

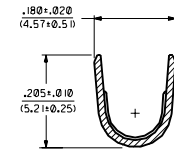


- NOTES:
1. THIS TERMINAL FOR USE IN HOUSING NO'S. 40585-1-5, 40585-3000, 43032-3300, 43032-3400, AND 43032-3500.
 2. TERMINALS FOR USE WITH SOLID OR STRANDED WIRE.
 3. TERMINALS TO BE SUPPLIED IN CHAIN FORM.
 4. PRODUCT CONFORMS TO PS-40585.
 5. REELS OF THESE TERMINALS CANNOT HAVE MECHANICAL SPLICES.
 6. USING SEAM LINE AS VERTICAL CENTERLINE INDICATOR- MAXIMUM EXCURSION FROM HORIZONTAL CENTERLINE IS INDICATED FOR BOTH LOCK AND STOP TABS.

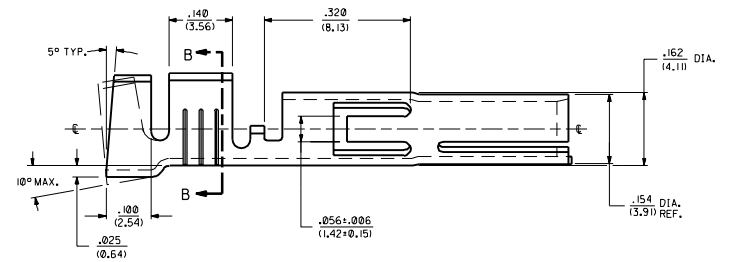
STRIP AND CARRIER LAYOUT
SCALE 4:1



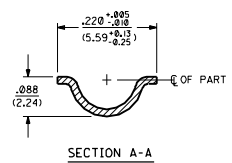
INSULATION CRIMP DETAIL



SECTION B-B



12 AWG TERMINAL SHOWN



SECTION A-A

| | |
|----|--|
| C | ADD P/MS -04 1H-08 ECU USF2000-0110 MANUeller 88-02-22 |
| B1 | REVO TAB A DMS ADD NOTE 6-B ECU US1174 WM 88-05-21 |
| B | UPDATE PICTORIAL ECU US087 C.E.S. 98-01-31 |
| A4 | ADD .4003 ECU US108-10 C.E.S. 95-08-10 |
| A3 | ADD .249 DIA. ECU US108-06 DMS |
| A2 | UPDATE TO L.R. ECU US108-05 DMS |
| A1 | UPDATE TO L.R. 93/04-26 DMS |
| 2 | BI |
| 1 | C |

MOLEX INCORPORATED

SEE CHART SD-42825-40

REVISIONS

DATE

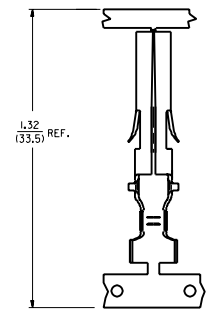
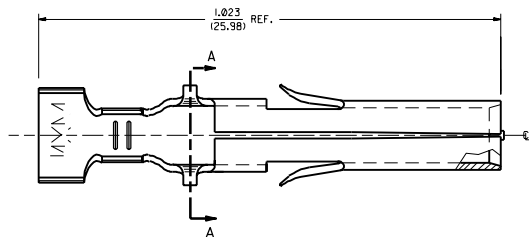
REVISED

SCALE 1:1

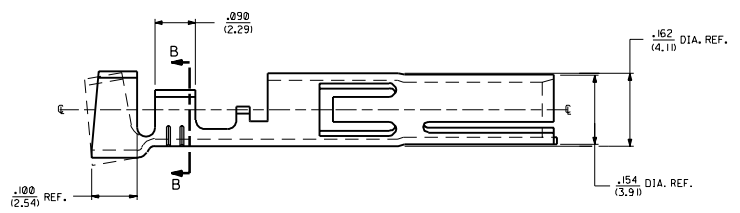
1 OF 2

3/1/03/08

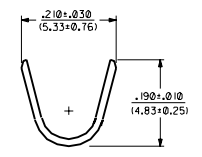
20 19 18 17 16 15 14 13 12 11 10 9 8 7 6 5 4 3 2 1



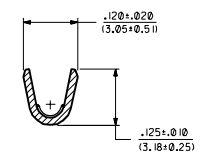
STRIP AND CARRIER LAYOUT
SCALE 4:1



18 AWG TERMINAL SHOWN



INSULATION CRIMP DETAIL



SECTION B-B

| REV. | DESCRIPTION |
|------|-------------|
| B1 | SEE SHEET 1 |
| B | SEE SHEET 1 |
| A4 | SEE SHEET 1 |
| A3 | SEE SHEET 1 |
| A2 | SEE SHEET 1 |
| A1 | SEE SHEET 1 |
| A | SEE SHEET 1 |

| | | | | | | | | | |
|----------------------------------|--|------------------------------------|--|---|--|--|--|-------------------------------|--|
| DRAWING SHEET NUMBER: 42825 | | REV. 0 | | REV. 0 | | REV. 0 | | REV. 0 | |
| DRAWING TITLE: SOCKET TERMINAL | | DRAWING DATE: 02/04/29 | | DRAWING SCALE: 8:1 | | DRAWING SHEET: 2 | | DRAWING TOTAL SHEETS: 2 | |
| DRAWING AUTHOR: TRM | | DRAWING CHECKER: SBB | | DRAWING APPROVER: RWD | | DRAWING DATE: 02/04/29 | | DRAWING SCALE: 8:1 | |
| DRAWING PART NUMBER: SD-42825-40 | | DRAWING PART NAME: SOCKET TERMINAL | | DRAWING PART DESCRIPTION: SOCKET TERMINAL | | DRAWING PART MATERIAL: 304 STAINLESS STEEL | | DRAWING PART FINISH: POLISHED | |

20 19 18 17 16 15 14 13 12 11 10 9 8 7 6 5 4 3 2 1