



ON Semiconductor®

# NC7SZ86 TinyLogic® UHS Two-Input Exclusive-OR Gate


## Features

- Ultra-High Speed:  $t_{PD}$  2.9ns (Typical) into 50pF at 5V  $V_{CC}$
- High Output Drive:  $\pm 24mA$  at 3V  $V_{CC}$
- Broad  $V_{CC}$  Operating Range: 1.65V to 5.5V
- Matches Performance of LCX Operated at 3.3V  $V_{CC}$
- Power Down High-Impedance Inputs/Outputs
- Over-Voltage Tolerance inputs facilitate 5V to 3V Translation
- Proprietary Noise/EMI Reduction Circuitry
- Ultra-Small MicroPak™ Packages
- Space-Saving SOT23 and SC70 Packages

## Description

The NC7SZ86 is a single two-input exclusive-OR gate from ON Semiconductor's Ultra-High Speed (UHS) series of TinyLogic®. The device is fabricated with advanced CMOS technology to achieve ultra-high speed with high output drive while maintaining low static power dissipation over a broad  $V_{CC}$  operating range. The device is specified to operate over the 1.65V to 5.5V  $V_{CC}$  operating range. The inputs and output are high impedance when  $V_{CC}$  is 0V. Inputs tolerate voltages up to 6V, independent of  $V_{CC}$  operating voltage.

## Ordering Information

| Part Number | Top Mark |  Eco Status | Package                                    | Packing Method            |
|-------------|----------|--|--|---------------------------|
| NC7SZ86M5X  | 7Z86     | RoHS   | 5-Lead SOT23, JEDEC MO-178 1.6mm           | 3000 Units on Tape & Reel |
| NC7SZ86P5X  | Z86      | RoHS   | 5-Lead SC70, EIAJ SC-88a, 1.25mm Wide      | 3000 Units on Tape & Reel |
| NC7SZ86L6X  | B3       | RoHS   | 6-Lead MicroPak™, 1.00mm Wide              | 5000 Units on Tape & Reel |
| NC7SZ86FHX  | B3       | Green  | 6-Lead, MicroPak2, 1x1mm Body, .35mm Pitch | 5000 Units on Tape & Reel |

NC7SZ86 — TinyLogic® UHS Two-Input Exclusive-OR Gate

## Connection Diagrams

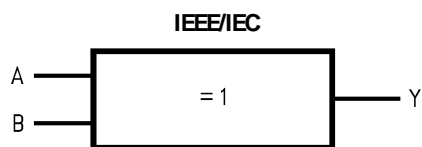


Figure 1. Logic Symbol

## Pin Configurations

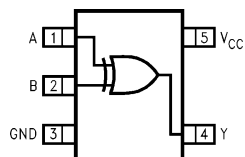


Figure 2. SC70 and SOT23 (Top View)

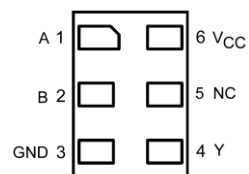


Figure 3. MicroPak™ (Top Through View)

## Pin Definitions

| Pin # SC70 / SOT23 | Pin # MicroPak | Name            | Description    |
|--------------------|----------------|-----------------|----------------|
| 1                  | 1              | A               | Input          |
| 2                  | 2              | B               | Input          |
| 3                  | 3              | GND             | Ground         |
| 4                  | 4              | Y               | Output         |
| 5                  | 6              | V <sub>CC</sub> | Supply Voltage |
|                    | 5              | NC              | No Connect     |

## Function Table

$$Y = A + B$$

| Inputs |   | Output |
|--------|---|--------|
| A      | B | Y      |
| L      | L | L      |
| L      | H | H      |
| H      | L | H      |
| H      | H | L      |

H = HIGH Logic Level

L = LOW Logic Level

## Absolute Maximum Ratings

Stresses exceeding the absolute maximum ratings may damage the device. The device may not function or be operable above the recommended operating conditions and stressing the parts to these levels is not recommended. In addition, extended exposure to stresses above the recommended operating conditions may affect device reliability. The absolute maximum ratings are stress ratings only.

| Symbol                | Parameter   |                            | Min. | Max. | Unit |
|-----------------------|---|----------------------------|------|------|------|
| $V_{CC}$              | Supply Voltage                                    |                            | -0.5 | 6.0  | V    |
| $V_{IN}$              | DC Input Voltage                                  |                            | -0.5 | 6.0  | V    |
| $V_{OUT}$             | DC Output Voltage                                 |                            | -0.5 | 6.0  | V    |
| $I_{IK}$              | DC Input Diode Current                            | $V_{IN} < -0.5V$           |      | -50  | mA   |
|                       |   | $V_{IN} > 6.0V$            |      | +20  |      |
| $I_{OK}$              | DC Output Diode Current                           | $V_{OUT} < -0.5V$          |      | -50  | mA   |
|                       |   | $V_{OUT} > 6V, V_{CC}=GND$ |      | +20  |      |
| $I_{OUT}$             | DC Output Current                                 |                            |      | ±50  | mA   |
| $I_{CC}$ or $I_{GND}$ | DC $V_{CC}$ or Ground Current                     |                            |      | ±50  | mA   |
| $T_{STG}$             | Storage Temperature Range                         |                            | -65  | +150 | °C   |
| $T_J$                 | Junction Temperature Under Bias                   |                            |      | +150 | °C   |
| $T_L$                 | Junction Lead Temperature (Soldering, 10 Seconds) |                            |      | +260 | °C   |
| $P_D$                 | Power Dissipation at +85°C                        | SOT-23                     |      | 200  | mW   |
|                       |   | SC70-5                     |      | 150  |      |
|                       |   | MicroPak-6                 |      | 130  |      |
|                       |   | MicroPak2-6                |      | 120  |      |
| ESD                   | Human Body Model, JEDEC:JESD22-A114               |                            |      | 4000 | V    |
|                       | Charge Device Model: JEDEC:JESD22-C101            |                            |      | 2000 |      |

## Recommended Operating Conditions

The Recommended Operating Conditions table defines the conditions for actual device operation. Recommended operating conditions are specified to ensure optimal performance to the datasheet specifications. ON Semiconductor does not recommend exceeding them or designing to Absolute Maximum Ratings.

| Symbol        | Parameter                     | Conditions                   | Min. | Max.     | Unit |
|---------------|-------------------------------|------------------------------|------|----------|------|
| $V_{CC}$      | Supply Voltage Operating      |                              | 1.65 | 5.50     | V    |
|               | Supply Voltage Data Retention |                              | 1.50 | 5.50     |      |
| $V_{IN}$      | Input Voltage                 |                              | 0    | 5.5      | V    |
| $V_{OUT}$     | Output Voltage                |                              | 0    | $V_{CC}$ | V    |
| $T_A$         | Operating Temperature         |                              | -40  | +85      | °C   |
| $t_r, t_f$    | Input Rise and Fall Times     | $V_{CC}=1.8V, 2.5V \pm 0.2V$ | 0    | 20       | ns/V |
|               |                               | $V_{CC}=3.3V \pm 0.3V$       | 0    | 10       |      |
|               |                               | $V_{CC}=5.0V \pm 0.5V$       | 0    | 5        |      |
| $\theta_{JA}$ | Thermal Resistance            | SOT-23                       |      | 300      | °C/W |

|  |  |             |  |     |  |
|--|--|-------------|--|-----|--|
|  |  | SC70-5      |  | 425 |  |
|  |  | MicroPak-6  |  | 500 |  |
|  |  | MicroPak2-6 |  | 560 |  |

**Note:**

1. Unused inputs must be held HIGH or LOW. They may not float.

### DC Electrical Characteristics

| Symbol           | Parameter                 | V <sub>CC</sub> | Conditions  | T <sub>A</sub> =+25°C |      |                     | T <sub>A</sub> =-40 to +85°C |                     | Units |
|------------------|---------------------------|-----------------|---|-----------------------|------|---------------------|------------------------------|---------------------|-------|
|                  |                           |                 |   | Min.                  | Typ. | Max.                | Min.                         | Max.                |       |
| V <sub>IH</sub>  | HIGH Level Input Voltage  | 1.65 to 1.95    |   | 0.75V <sub>CC</sub>   |      |                     | 0.75V <sub>CC</sub>          |                     | V     |
|                  |                           | 2.30 to 5.50    |   | 0.70V <sub>CC</sub>   |      |                     | 0.70V <sub>CC</sub>          |                     |       |
| V <sub>IL</sub>  | LOW Level Input Voltage   | 1.65 to 1.95    |   |                       |      | 0.25V <sub>CC</sub> |                              | 0.25V <sub>CC</sub> | V     |
|                  |                           | 2.30 to 5.50    |   |                       |      | 0.30V <sub>CC</sub> |                              | 0.30V <sub>CC</sub> |       |
| V <sub>OH</sub>  | HIGH Level Output Voltage | 1.65            | V <sub>IN</sub> =V <sub>IH</sub> , V <sub>IL</sub><br>I <sub>OH</sub> =-100μA   | 1.55                  | 1.65 |                     | 1.55                         |                     | V     |
|                  |                           | 1.80            |   | 1.70                  | 1.80 |                     | 1.70                         |                     |       |
|                  |                           | 2.30            |   | 2.20                  | 2.30 |                     | 2.20                         |                     |       |
|                  |                           | 3.00            |   | 2.90                  | 3.00 |                     | 2.90                         |                     |       |
|                  |                           | 4.50            |   | 4.40                  | 4.50 |                     | 4.40                         |                     |       |
|                  |                           | 1.65            | I <sub>OH</sub> =-4mA   | 1.29                  | 1.52 |                     | 1.29                         |                     |       |
|                  |                           | 2.30            | I <sub>OH</sub> =-8mA   | 1.90                  | 2.15 |                     | 1.90                         |                     |       |
|                  |                           | 3.00            | I <sub>OH</sub> =-16mA  | 2.40                  | 2.80 |                     | 2.40                         |                     |       |
|                  |                           | 3.00            | I <sub>OH</sub> =-24mA  | 2.30                  | 2.68 |                     | 2.30                         |                     |       |
|                  |                           | 4.50            | I <sub>OH</sub> =-32mA  | 3.80                  | 4.20 |                     | 3.80                         |                     |       |
| V <sub>OL</sub>  | LOW Level Output Voltage  | 1.65            | V <sub>IN</sub> =V <sub>IH</sub> , or V <sub>IL</sub><br>I <sub>OL</sub> =100μA |                       | 0.00 | 0.10                |                              | 0.10                | V     |
|                  |                           | 1.80            |   |                       | 0.00 | 0.10                |                              | 0.10                |       |
|                  |                           | 2.30            |   |                       | 0.00 | 0.10                |                              | 0.10                |       |
|                  |                           | 3.00            |   |                       | 0.00 | 0.10                |                              | 0.10                |       |
|                  |                           | 4.50            |   |                       | 0.00 | 0.10                |                              | 0.10                |       |
|                  |                           | 1.65            | I <sub>OL</sub> =4mA  |                       | 0.80 | 0.24                |                              | 0.24                |       |
|                  |                           | 2.30            | I <sub>OL</sub> =8mA  |                       | 0.10 | 0.30                |                              | 0.30                |       |
|                  |                           | 3.00            | I <sub>OL</sub> =16mA   |                       | 0.15 | 0.40                |                              | 0.40                |       |
|                  |                           | 3.00            | I <sub>OL</sub> =24mA   |                       | 0.22 | 0.55                |                              | 0.55                |       |
|                  |                           | 4.50            | I <sub>OL</sub> =32mA   |                       | 0.22 | 0.55                |                              | 0.55                |       |
| I <sub>IN</sub>  | Input Leakage Current     | 0 to 5.5        | V <sub>IN</sub> =5.5V, GND  |                       |      | ±1                  |                              | ±10                 | μA    |
| I <sub>OFF</sub> | Power Off Leakage Current | 0               | V <sub>IN</sub> or V <sub>OUT</sub> =5.5V                                       |                       |      | 1                   |                              | 10                  | μA    |
| I <sub>CC</sub>  | Quiescent Supply Current  | 1.65 to 5.50    | V <sub>IN</sub> =5.5V, GND  |                       |      | 2                   |                              | 20                  | μA    |

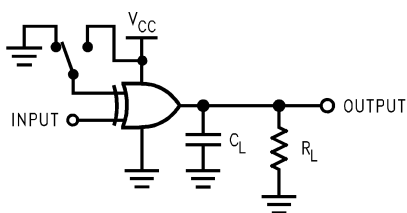
### AC Electrical Characteristics

| Symbol                              | Parameter         | V <sub>CC</sub> | Conditions                                   | T <sub>A</sub> =+25°C |      |      | T <sub>A</sub> =-40 to +85°C |      | Units | Figure               |
|-------------------------------------|-------------------|-----------------|--|-----------------------|------|------|------------------------------|------|-------|----------------------|
|                                     |                   |                 |  | Min.                  | Typ. | Max. | Min.                         | Max. |       |                      |
| t <sub>PLH</sub> , t <sub>PHL</sub> | Propagation Delay | 1.65            | C <sub>L</sub> =15pF,<br>R <sub>L</sub> =1MΩ | 2.0                   | 6.9  | 13.8 | 2.0                          | 14.5 | ns    | Figure 4<br>Figure 5 |
|                                     |                   | 1.80            |  | 2.0                   | 5.7  | 11.5 | 2.0                          | 12.0 |       |                      |
|                                     |                   | 2.50 ± 0.20     |  | 0.8                   | 3.8  | 8.0  | 0.8                          | 8.5  |       |                      |

|                 |  |             |   |     |     |     |     |     |    |          |
|-----------------|--|-------------|---|-----|-----|-----|-----|-----|----|----------|
|                 |  | 3.30 ± 0.30 |   | 0.5 | 3.0 | 5.7 | 0.5 | 6.0 |    |          |
|                 |  | 5.00 ± 0.50 |   | 0.5 | 2.4 | 5.0 | 0.5 | 5.4 |    |          |
|                 |  | 3.30 ± 0.30 | C <sub>L</sub> =50pF,<br>R <sub>L</sub> =500Ω | 1.5 | 3.5 | 6.2 | 1.5 | 6.5 |    |          |
|                 |  | 5.00 ± 0.50 |   | 0.8 | 2.9 | 5.4 | 1.0 | 5.8 |    |          |
| C <sub>IN</sub> | Input Capacitance                            | 0.00        |   |     | 4   |     |     |     | pF |          |
| C <sub>PD</sub> | Power Dissipation Capacitance <sup>(2)</sup> | 3.30        |   |     | 25  |     |     |     | pF | Figure 6 |
|                 |  | 5.00        |   |     | 31  |     |     |     |    |          |

**Note:**

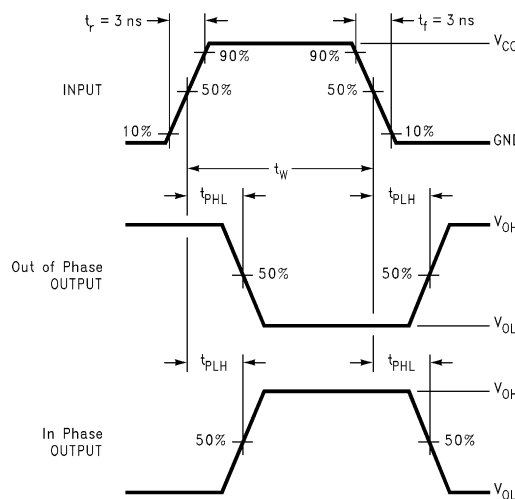
- C<sub>PD</sub> is defined as the value of the internal equivalent capacitance which is derived from dynamic operating current consumption (I<sub>CCD</sub>) at no output loading and operating at 50% duty cycle. C<sub>PD</sub> is related to I<sub>CCD</sub> dynamic operating current by the expression: I<sub>CCD</sub>=(C<sub>PD</sub>)(V<sub>CC</sub>)(f<sub>IN</sub>)+(I<sub>CC</sub>static).



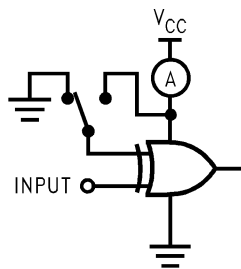
**Figure 4. AC Test Circuit**

**Note:**

- C<sub>L</sub> includes load and stray capacitance. Input PRR=10MHz t<sub>w</sub>=500ns.



**Figure 5. AC Waveforms**

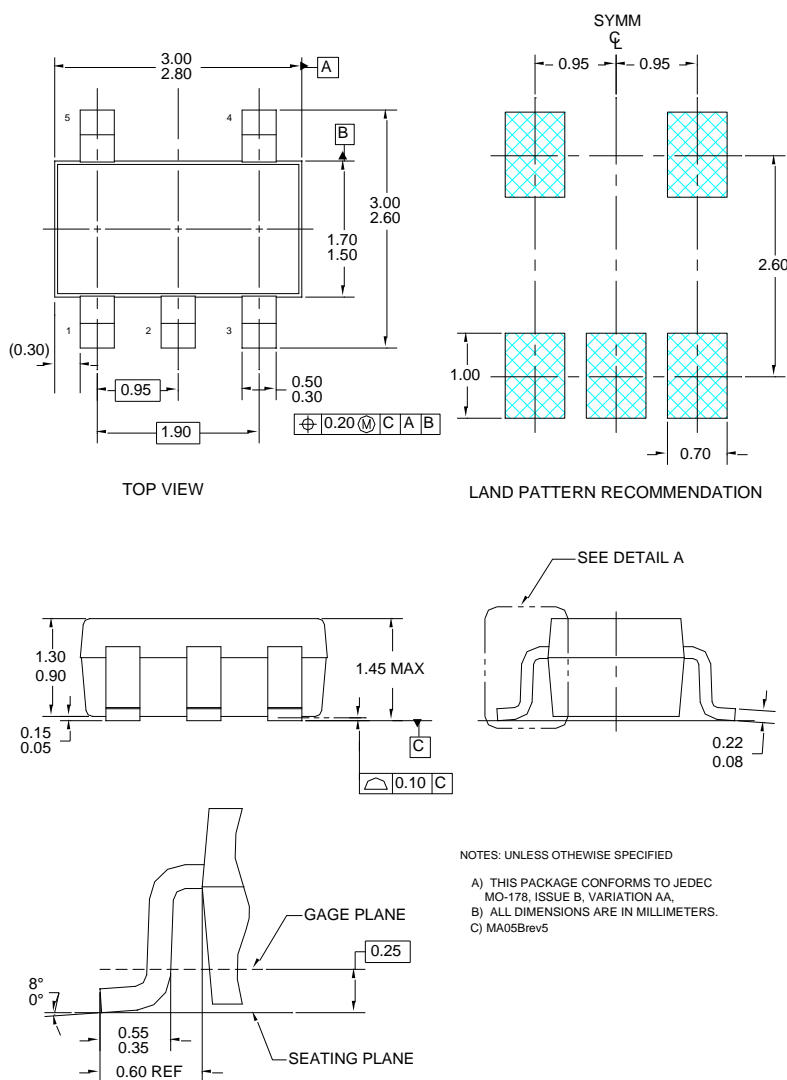


**Figure 6. I<sub>CCD</sub> Test Circuit**

**Note:**

- Input=AC Waveform; t<sub>r</sub>=t<sub>f</sub>=1.8ns; PRR=10MHz; Duty Cycle=50%

## Physical Dimensions



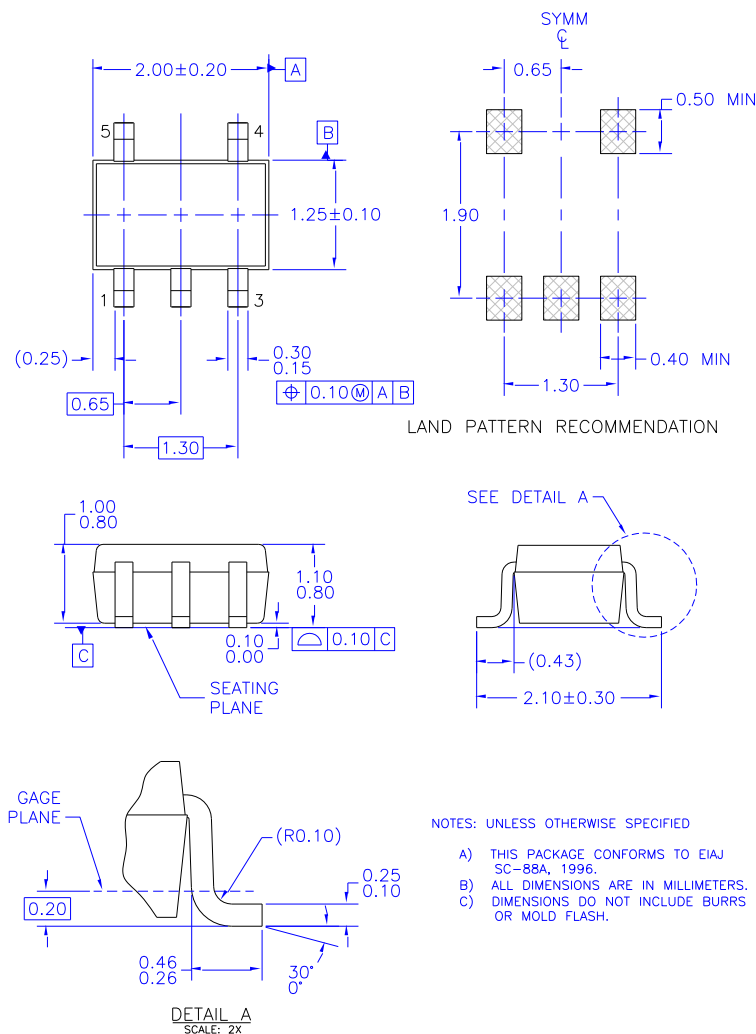
**Figure 7. 5-Lead SOT23, JEDEC MO-178 1.6mm**

Package drawings are provided as a service to customers considering ON Semiconductor components. Drawings may change in any manner without notice. Please note the revision and/or date on the drawing and contact a ON Semiconductor representative to verify or obtain the most recent revision. Package specifications do not expand the terms of ON Semiconductor's worldwide terms and conditions, specifically the warranty therein, which covers ON Semiconductor products.

## Tape and Reel Specifications

| Package Designator | Tape Section       | Cavity Number | Cavity Status | Cover Type Status |
|--------------------|--------------------|---------------|---------------|-------------------|
| M5X                | Leader (Start End) | 125 (Typical) | Empty         | Sealed            |
|                    | Carrier            | 3000          | Filled        | Sealed            |
|                    | Trailer (Hub End)  | 75 (Typical)  | Empty         | Sealed            |

## Physical Dimensions



MAA05AREV5

**Figure 8. 5-Lead, SC70, EIAJ SC-88a, 1.25mm Wide**

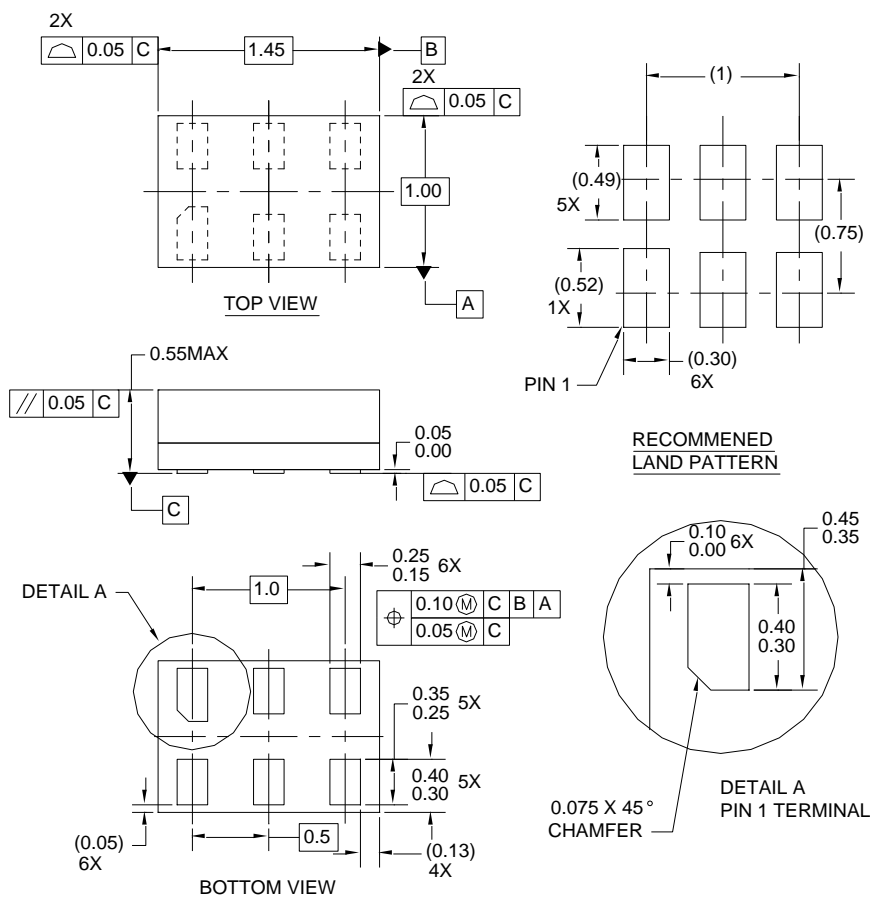
Package drawings are provided as a service to customers considering ON Semiconductor components. Drawings may change in any manner without notice. Please note the revision and/or date on the drawing and contact a ON Semiconductor representative to verify or obtain the most recent revision. Package specifications do not expand the terms of ON Semiconductor's worldwide terms and conditions, specifically the warranty therein, which covers ON Semiconductor products.

## Tape and Reel Specifications

| Package Designator | Tape Section       | Cavity Number | Cavity Status | Cover Type Status |
|--------------------|--------------------|---------------|---------------|-------------------|
| P5X                | Leader (Start End) | 125 (Typical) | Empty         | Sealed            |
|                    | Carrier            | 3000          | Filled        | Sealed            |
|                    | Trailer (Hub End)  | 75 (Typical)  | Empty         | Sealed            |



## Physical Dimensions



**Notes:**

1. CONFORMS TO JEDEC STANDARD M0-252 VARIATION UAAD
2. DIMENSIONS ARE IN MILLIMETERS
3. DRAWING CONFORMS TO ASME Y14.5M-1994

MAC06AREVC

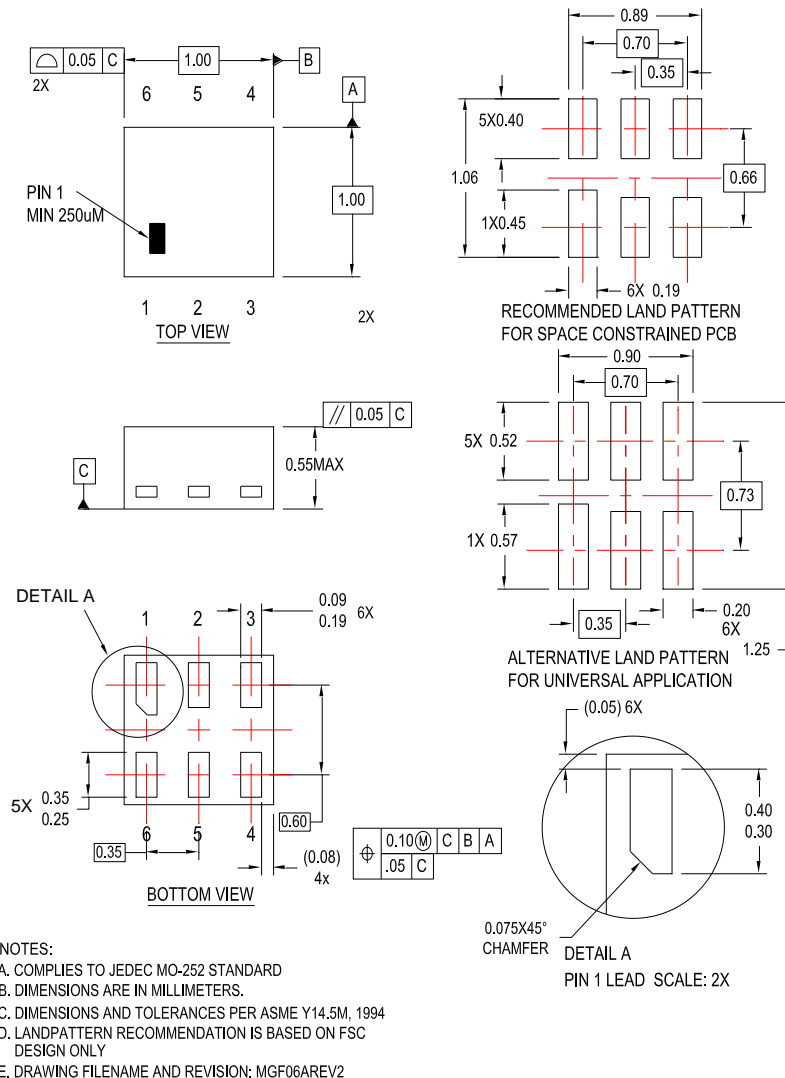
**Figure 9. 6-Lead, MicroPak™, 1.0mm Wide**

Package drawings are provided as a service to customers considering ON Semiconductor components. Drawings may change in any manner without notice. Please note the revision and/or date on the drawing and contact a ON Semiconductor representative to verify or obtain the most recent revision. Package specifications do not expand the terms of ON Semiconductor's worldwide terms and conditions, specifically the warranty therein, which covers ON Semiconductor products.

## Tape and Reel Specifications

| Package Designator | Tape Section       | Cavity Number | Cavity Status | Cover Type Status |
|--------------------|--------------------|---------------|---------------|-------------------|
| L6X                | Leader (Start End) | 125 (Typical) | Empty         | Sealed            |
|                    | Carrier            | 5000          | Filled        | Sealed            |
|                    | Trailer (Hub End)  | 75 (Typical)  | Empty         | Sealed            |

## Physical Dimensions



**Figure 10. 6-Lead, MicroPak2, 1x1mm Body, .35mm Pitch**

Package drawings are provided as a service to customers considering ON Semiconductor components. Drawings may change in any manner without notice. Please note the revision and/or date on the drawing and contact a ON Semiconductor representative to verify or obtain the most recent revision. Package specifications do not expand the terms of ON Semiconductor's worldwide terms and conditions, specifically the warranty therein, which covers ON Semiconductor products.

## Tape and Reel Specifications

| Package Designator | Tape Section       | Cavity Number | Cavity Status | Cover Type Status |
|--------------------|--------------------|---------------|---------------|-------------------|
| FHX                | Leader (Start End) | 125 (Typical) | Empty         | Sealed            |
|                    | Carrier            | 5000          | Filled        | Sealed            |
|                    | Trailer (Hub End)  | 75 (Typical)  | Empty         | Sealed            |

ON Semiconductor and the ON Semiconductor logo are trademarks of Semiconductor Components Industries, LLC dba ON Semiconductor or its subsidiaries in the United States and/or other countries. ON Semiconductor owns the rights to a number of patents, trademarks, copyrights, trade secrets, and other intellectual property. A listing of ON Semiconductor's product/patent coverage may be accessed at [www.onsemi.com/site/pdf/Patent-Marking.pdf](http://www.onsemi.com/site/pdf/Patent-Marking.pdf). ON Semiconductor reserves the right to make changes without further notice to any products herein. ON Semiconductor makes no warranty, representation or guarantee regarding the suitability of its products for any particular purpose, nor does ON Semiconductor assume any liability arising out of the application or use of any product or circuit, and specifically disclaims any and all liability, including without limitation special, consequential or incidental damages. Buyer is responsible for its products and applications using ON Semiconductor products, including compliance with all laws, regulations and safety requirements or standards, regardless of any support or applications information provided by ON Semiconductor. "Typical" parameters which may be provided in ON Semiconductor data sheets and/or specifications can and do vary in different applications and actual performance may vary over time. All operating parameters, including "Typicals" must be validated for each customer application by customer's technical experts. ON Semiconductor does not convey any license under its patent rights nor the rights of others. ON Semiconductor products are not designed, intended, or authorized for use as a critical component in life support systems or any FDA Class 3 medical devices or medical devices with a same or similar classification in a foreign jurisdiction or any devices intended for implantation in the human body. Should Buyer purchase or use ON Semiconductor products for any such unintended or unauthorized application, Buyer shall indemnify and hold ON Semiconductor and its officers, employees, subsidiaries, affiliates, and distributors harmless against all claims, costs, damages, and expenses, and reasonable attorney fees arising out of, directly or indirectly, any claim of personal injury or death associated with such unintended or unauthorized use, even if such claim alleges that ON Semiconductor was negligent regarding the design or manufacture of the part. ON Semiconductor is an Equal Opportunity/Affirmative Action Employer. This literature is subject to all applicable copyright laws and is not for resale in any manner.

**PUBLICATION ORDERING INFORMATION**

**LITERATURE FULFILLMENT:**

Literature Distribution Center for ON Semiconductor  
 19521 E. 32nd Pkwy, Aurora, Colorado 80011 USA  
**Phone:** 303-675-2175 or 800-344-3860 Toll Free  
 USA/Canada  
**Fax:** 303-675-2176 or 800-344-3867 Toll Free USA/Canada  
**Email:** [orderlit@onsemi.com](mailto:orderlit@onsemi.com)

**N. American Technical Support:** 800-282-9855 Toll Free  
 USA/Canada.  
**Europe, Middle East and Africa Technical Support:**  
 Phone: 421 33 790 2910  
**Japan Customer Focus Center**  
 Phone: 81-3-5817-1050

**ON Semiconductor Website:** [www.onsemi.com](http://www.onsemi.com)  
**Order Literature:** <http://www.onsemi.com/orderlit>  
 For additional information, please contact your local Sales Representative