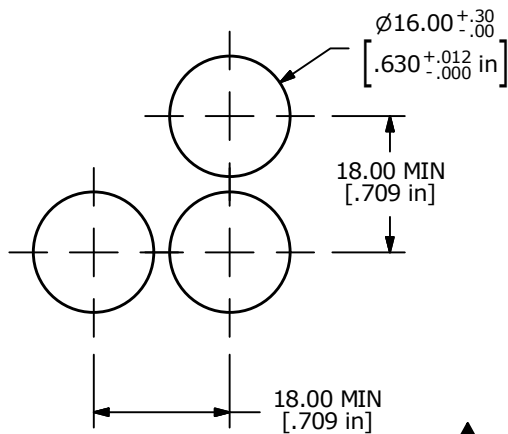
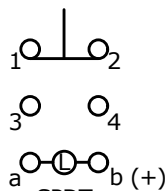
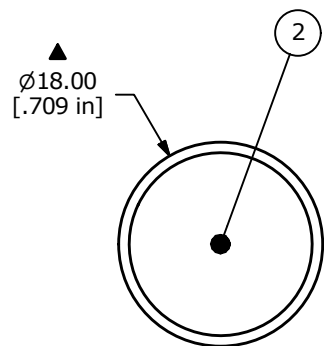


PARTS LIST

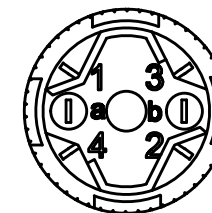
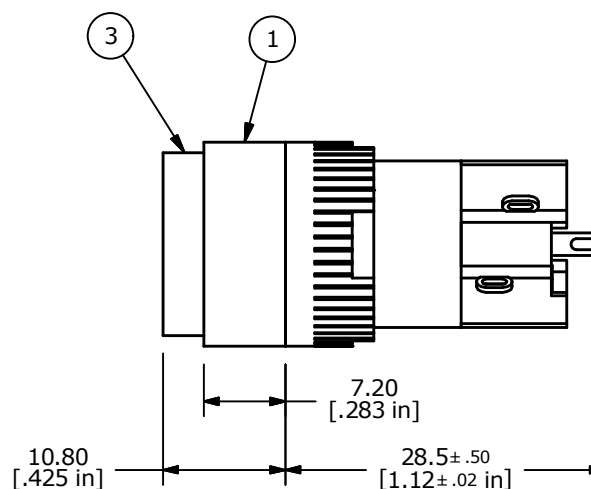
ITEM	QTY	PART NUMBER	DESCRIPTION
1	1	F040006	D16EER11
2	1	F050416	50-004-16 6VDC GREEN LED
3	1	F050102	50-001-02 CONCAVE GREEN



PANEL MOUNTING



CONTACT CONFIGURATION



NOTE:

1. ALL DIMENSIONS IN MM [INCH]
2. GENERAL TOLERANCE: X.X=±0.4
X.XX=±0.25
3. TERMINAL NUMBERS FOR REF ONLY
4. MECHANICAL LIFE: 100,000 OPERATIONS
5. INSULATION RESISTANCE: 1,000 MILLI-OHM MIN.
6. OPERATING TEMP.: -25°C to 55°C
- ▲ 7. LED VOLTAGE: 6VDC GREEN
8. ▲ DENOTES CRITICAL PARAMETER.

C	22191	UPDATED NOTE #4	3/15/16	MJR
B	18029	Parts Description was 50-001-06	3/19/08	rc
A	14453	RELEASED FOR PRODUCTION	11/3/04	AR
REV	PCR NO	DESCRIPTION	DATE	BY



TITLE D16EER11HGRNGRN				
SCALE	DATE	DR	DWG	REV
2:1	11/3/2004	AR	XF0611P	C

THE INFORMATION CONTAINED IN THIS DOCUMENT IS PROPRIETARY TO E-SWITCH AND IS NOT TO BE COPIED OR TRANSFERRED