

## Flange - SACC-MSQ-M12MS-25-3,2 SCO - 1419959

Please be informed that the data shown in this PDF Document is generated from our Online Catalog. Please find the complete data in the user's documentation. Our General Terms of Use for Downloads are valid (<http://download.phoenixcontact.com>)

Flange housing, 25 mm x 25 mm



### Key commercial data

Packing unit	1 PCE
Weight per Piece (excluding packing)	20.0 GRM
Custom tariff number	85389099
Country of origin	Germany

### Technical data

#### Ambient conditions

Ambient temperature (operation)	-25 °C ... 85 °C (Plug / socket)
---------------------------------	----------------------------------

#### General

Standards/regulations	M12 connector IEC 61076-2-101
Mounting type	Front mounting, square flange 25 mm side length Square flange

#### Material

Material, knurls	Zinc die-cast, nickel-plated
Sealing material	NBR

### Classifications

#### eCl@ss

eCl@ss 4.0	27250313
eCl@ss 4.1	27250313
eCl@ss 5.0	27143423

# Flange - SACC-MSQ-M12MS-25-3,2 SCO - 1419959

## Classifications

### eCl@ss

eCl@ss 5.1	27143423
eCl@ss 6.0	27143423
eCl@ss 7.0	27449001
eCl@ss 8.0	27449001

### ETIM

ETIM 4.0	EC002608
ETIM 5.0	EC002608

### UNSPSC

UNSPSC 6.01	31251501
UNSPSC 7.0901	31251501
UNSPSC 11	31251501
UNSPSC 12.01	31251501
UNSPSC 13.2	31251501

## Approvals

### Approvals

---

Approvals

GOST / GOST

---

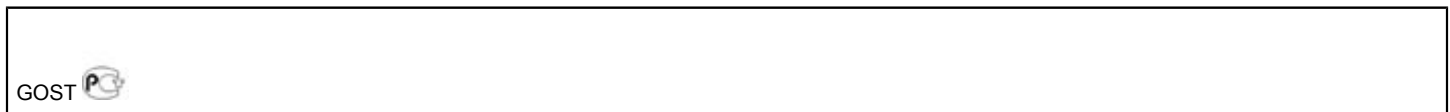
Ex Approvals

---

Approvals submitted

---

### Approval details



## Flange - SACC-MSQ-M12MS-25-3,2 SCO - 1419959

### Accessories

#### Accessories

Circular connectors (device side)

Contact carriers - SACC-MCI-M12MSD-4CON/0,5 - 1440821



Assembled contact carrier and insulating body with 0.5 m litz wires and crimp contacts

---

Contact carriers - SACC-MCI-M12MS-4CON - 1440931



4-pos. contact carrier, with splice ring, A-coded

---

Contact carriers - SACC-MCI-M12MSD-4CON - 1440944



4-pos. contact carrier, with splice ring, D-coded

---

Contact carriers - SACC-MCI-M12MS-5CON - 1419988



5-pos. contact carrier, with splice ring, A-coded

---

Contact carriers - SACC-MCI-M12MSB-5CON - 1440915



5-pos. contact carrier, with splice ring, B-coded

## Flange - SACC-MSQ-M12MS-25-3,2 SCO - 1419959

### Accessories

---

Contact carriers - SACC-MCI-M12MS-8CON - 1440928



8-pos. contact carrier, with splice ring

---

### Contact insert

Contact carriers - SACC-MCI-M12MS-4CON/0,5 - 1440805



Assembled contact carrier and insulating body with 0.5 m litz wires and crimp contacts

---

Contact carriers - SACC-MCI-M12MS-5CON/0,5 - 1440818



Assembled contact carrier and insulating body with 0.5 m litz wires and crimp contacts

---

Contact carriers - SACC-MCI-M12MSB-5CON/0,5 - 1440759



Assembled contact carrier and insulating body with 0.5 m litz wires and crimp contacts

---

Contact carriers - SACC-MCI-M12MS-8CON/0,5 - 1457827



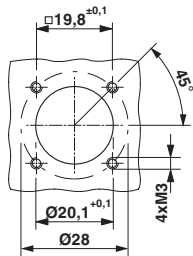
Assembled contact carrier and insulating body with 0.5 m litz wires and crimp contacts

---

# Flange - SACC-MSQ-M12MS-25-3,2 SCO - 1419959

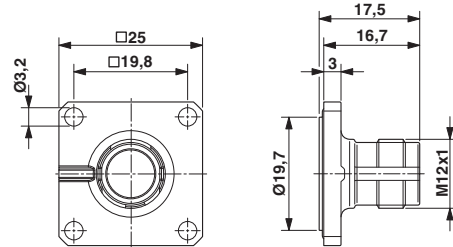
## Drawings

Dimensioned drawing



Installation dimensions

Dimensioned drawing



M12 flush-type plug, square flange