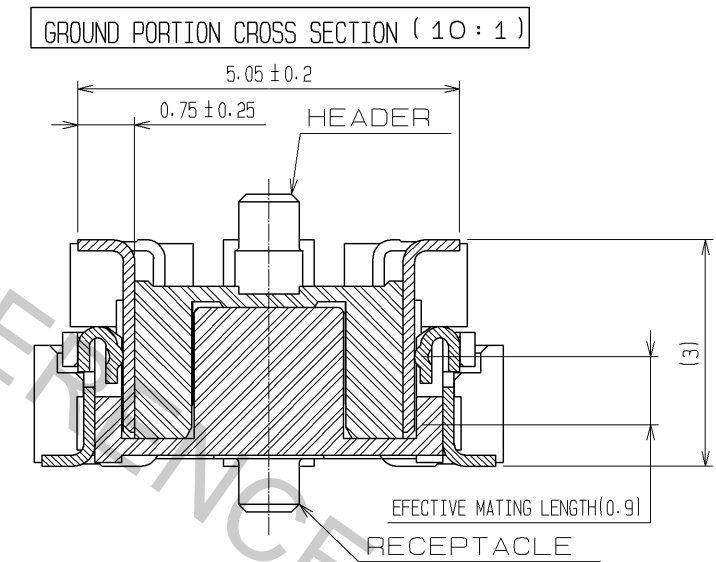
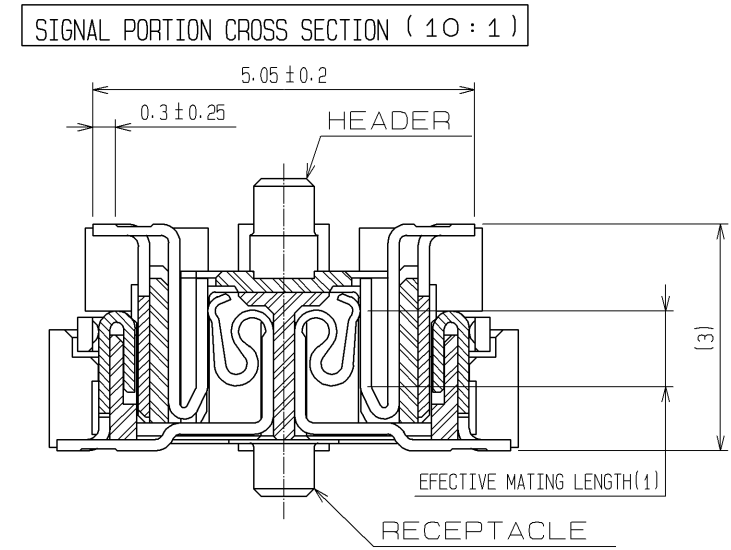
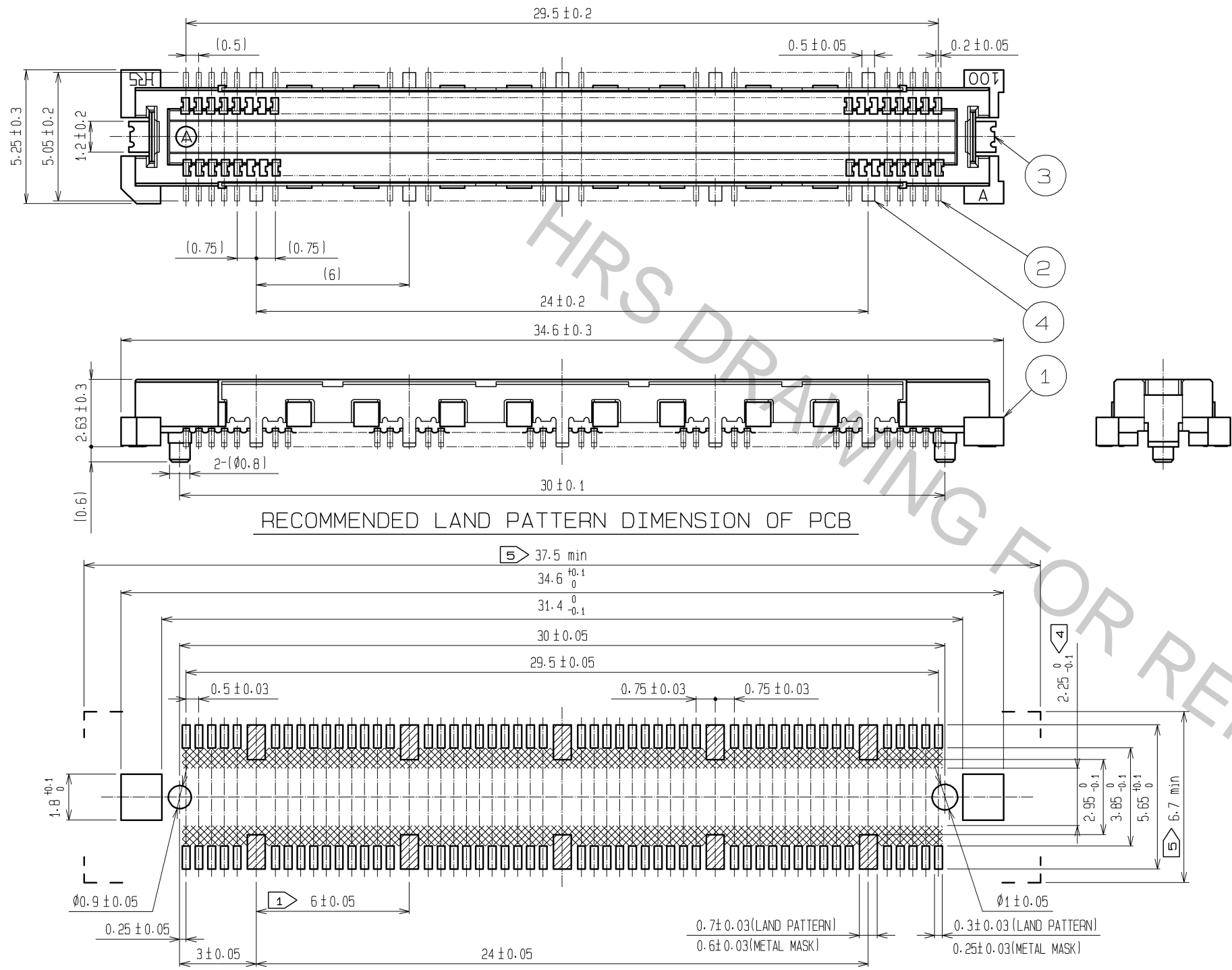


Apr.1.2017 Copyright 2017 HIROSE ELECTRIC CO., LTD. All Rights Reserved.



- NOTES
- ① 10 HATCHED PARTS: GROUND CIRCUIT.
  - ② SMT LEAD-COPLANARITY: 0.1 MAX.
  - ③ THIS PRODUCT HAS NO POLARITY TO PATTERN FOR MOUNTING.
  - ④ MAKE SURE WIDTH OF PATTERN IS WITHIN THAT OF LAND .OR LEAD MAY TOUCH PATTERN. (THIS APPLIES TO HATCHED AREA.)
  - ⑤ DO NOT MOUNT OTHER DEVICES ONTO AREA .OR MATING PAIR CANNOT BE MATED.
  - ⑥ THE DIMENSIONS IN PARENTHESES ARE FOR REFERENCE.

3, 4	PHOSPHOR BRONZE	TIN-PLATING	2	COPPER ALLOY	CONTACT AREA:GOLD 0.1 μm min. LEAD AREA:GOLD FLASH
1	LCP	BEIGE UL94V-0			UNDER PLATING:NICKEL 1 μm min.
NO.	MATERIAL	FINISH, REMARKS	NO.	MATERIAL	FINISH, REMARKS
UNITS	mm	SCALE	5 : 1	COUNT	△
APPROVED : HS. OKAWA		07.08.01	DRAWING NO. EDC3-152616-25		
CHECKED : HS. OZAWA		07.08.01	PART NO. FX11A-100P/10-SV0.5(71)		
DESIGNED : SY. KAMIGA		07.08.01	CODE NO. CL573-0604-0-71		
DRAWN : HK. SUNADORI		07.08.01	DATE		