

SCHEMATIC

FUNCTION: 2P2T ON-ON

RATING: 2A 48VDC
ILLUMINATION VOLTAGE: 12V 20mA

CONTACT RESISTANCE: Min. at 1A, 12VDC
INSULATION RESISTANCE: 1,000MΩ Min. at 500VDC

DIELECTRIC STRENGTH: 2,000VAC Min. for 1 Minute
ELECTRICAL LIFE: 50,000 Cycles

MECHANICAL LIFE: 1,000,000 Cycles

TEMPERATURE: Operating: -20°C to 70°C

INGRESS PROTECTION: IP65

APPROVALS: ROHS COMPLIANT

MATERIALS

BUSHING: Stainless Steel (304)
BASE: Polycarbonate (PC)
ACTUATOR: Stainless Steel (304)
POLYETHYLENE TEREPHTHALATE (PET), U194 V-2
POLYCARBONATE (PC)

HARDWARE: Nickel Plated Brass (H59)
SEALING: Silicone Rubber

INNER ASSEMBLY: Polyoxymethylene (POM)
PHOSPHOR BRONZE

SPRING: Spring Steel

CONTACTS: Silver/Cadmium Oxide (AgCdO)

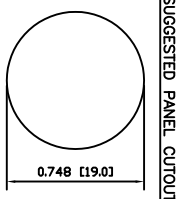
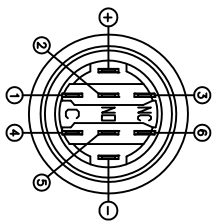
TERMINALS: Silver Plated Brass (H62)
Silver Plated Phosphor Bronze

O-RING: Silicone Rubber

COLORS AND FINISH

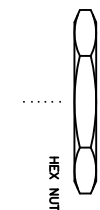
BEZEL: Stainless Steel Machine Finish
ACTUATOR: Stainless Steel Machine Finish
ILLUMINATION: Yellow (Forward)
Yellow (Reverse)

MARKING: None

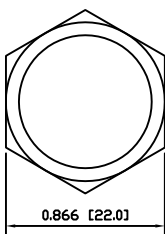


MAXIMUM PANEL THICKNESS: 0.433 [11.0mm]

EXPLODED VIEW



ASSEMBLED VIEW



REV.	BY	DATE	DESCRIPTION
1	AV	09/07/24	CAB
2	AV	09/07/24	CAB
3	AV	09/10/19	CAB
4	AV	09/07/27	CAB

THE INFORMATION CONTAINED IN THIS DOCUMENT IS PROPRIETARY TO E-SWITCH AND IS NOT TO BE COPIED OR TRANSMITTED

REV.	DESCRIPTION	DATE	BY
1	INITIAL RELEASE	10/24/11	BMA
2	FOR	10/24/11	BRN

INCHES [MILLIMETERS]	GENERAL TOLERANCES	SCALE
	±0.008 [±0.2] / ±1	DRAWING NOT TO SCALE

PROJECTION	DRAWING NUMBER
2D	52-PV4F2G0SS354

E-SWITCH **LAMB INDUSTRIES**

PV4F2G0SS-354

DATE: OCTOBER 24, 2011

REVISION: A