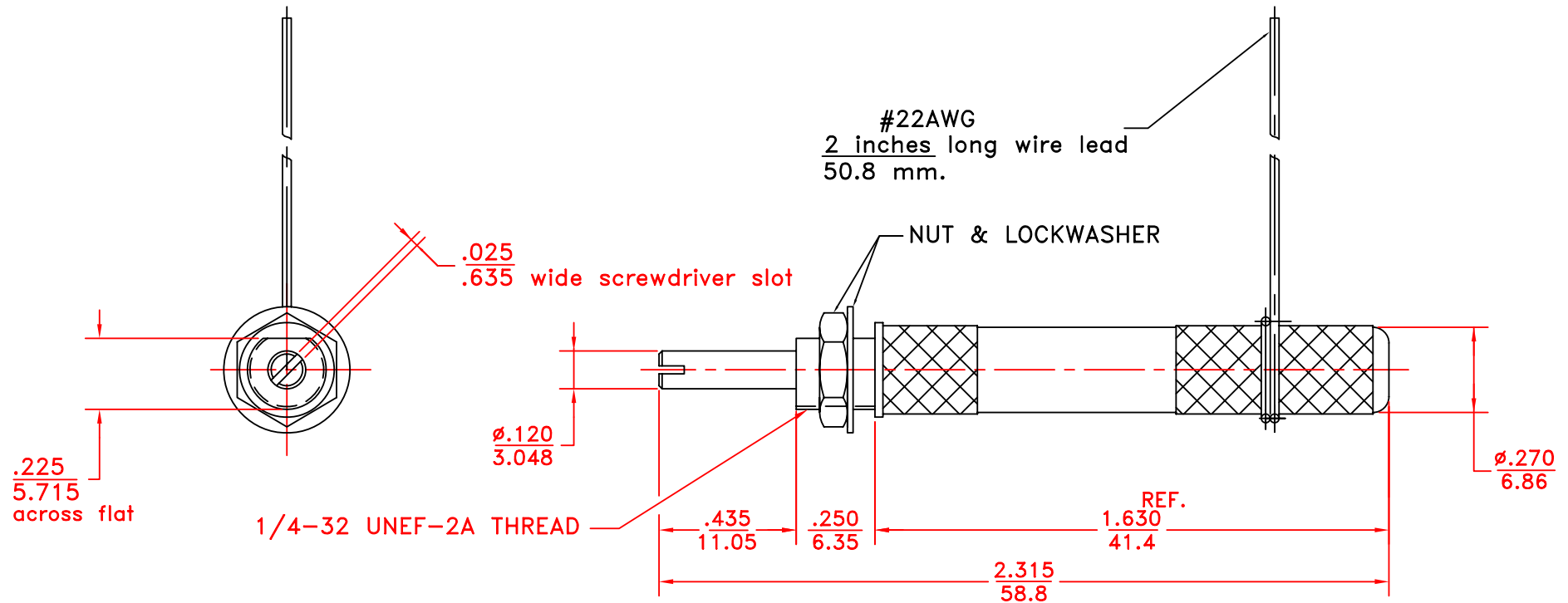


REV	DESCRIPTION	DATE	APP
00	NEW DRAWING	10/14/08	D.D.



NOTES:

1. Capacitance: Cmax over 15pF
2. Capacitance: Cmin less than 1.5 pF
3. Working voltage: 6.0 kVDC
4. Withstanding voltage: 12.0 kVDC
5. Quality factor "Q" @ 25 MHz over 1500
6. Torque .5 to 1.0 oz-in
7. Construction: 40 psi sealed, non-magnetic
8. Operation temperature: -55°C up to 125°C.
9. Dimensions: in/mm
10. Rotational life: 10,000 turns

TOLERANCES: (EXCEPT AS NOTED)	SPRAGUE GOODMAN ELECTRONICS INC. 1700 SHAMES DRIVE WESTBURY, NY 11590		
DECIMAL: ± 0.002 in ± 0.051 mm	MATERIAL:	SCALE: 2:1	DRAWN BY: R. LEVIN
FRACTIONAL: 1/64	TITLE: OUTLINE DWG SGNMNC1156E		APPROVED: D. DITLYA
ANGULAR: 1°	DATE: 10/14/08	DRAWING NUMBER SGNMNC1156E	USED FOR: REV. 00