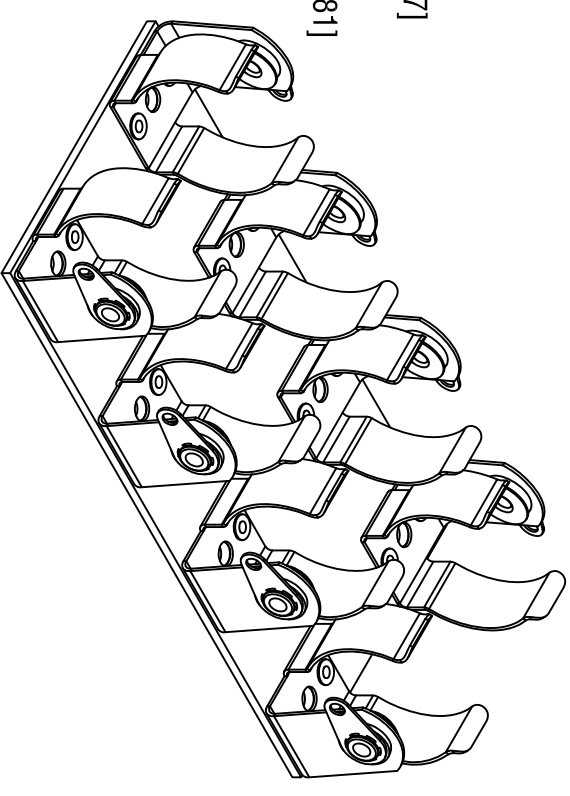
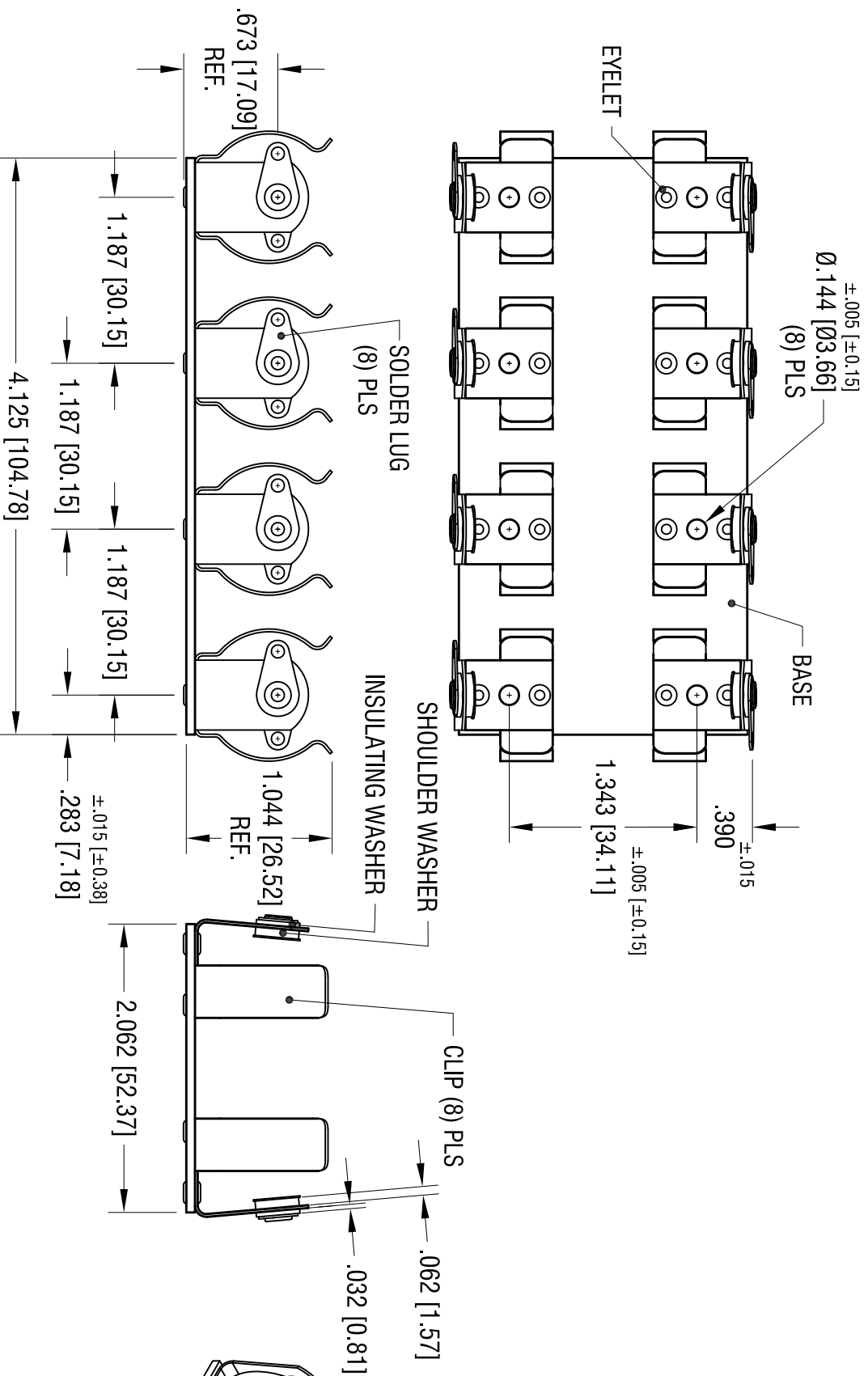


DATE	DESCRIPTION	REV.
2.19.08	CHANGE AS PER ECN 08-085	A
10.1.09	CHANGE AS PER ECN 09-140	B



- NOTE:
1. BASE: MAT'L-.062 [1.58] THK PHENOLIC
  2. CLIP: MAT'L-.020 [0.50] THK ANNEALED SPRING STEEL  
FINISH- NICKEL PLATE
  3. LUG: MAT'L-.016 [0.40] THK BRASS  
FINISH- MATTE TIN PLATE
  4. SHOULDER WASHER: MAT'L- FIBRE
  5. INSULATING WASHER: MAT'L- FIBRE
  6. EYELET: MAT'L- BRASS  
FINISH: TIN PLATE

**KEYSTONE ELECTRONICS CORP.**  
[www.keyelco.com](http://www.keyelco.com) • ASTORIA, N.Y. 11105-2017 • Tel (718) 956-8900

PART NAME

INSULATED BATTERY HOLDER, (4) 'C'

MATERIAL

AS NOTED

FINISH

AS NOTED

THIS DOCUMENT IS THE PROPERTY OF  
KEYSTONE ELECTRONICS CORP. AND  
SHALL NOT BE REPRODUCED, DISTRIBUTED  
OR USED AS A BASIS FOR MANUFACTURE  
WITHOUT PRIOR WRITTEN PERMISSION  
FROM KEYSTONE ELECTRONICS CORP.

TOLERANCES	INCH	[MM]	CODE	DWG NO.
DECIMAL	± .010	[± 0.25 ]	C	2188
ANGULAR	± 1°			

DRN BY	DATE
BOONE	8.11.82
APP'D	SCALE
LN	.9X