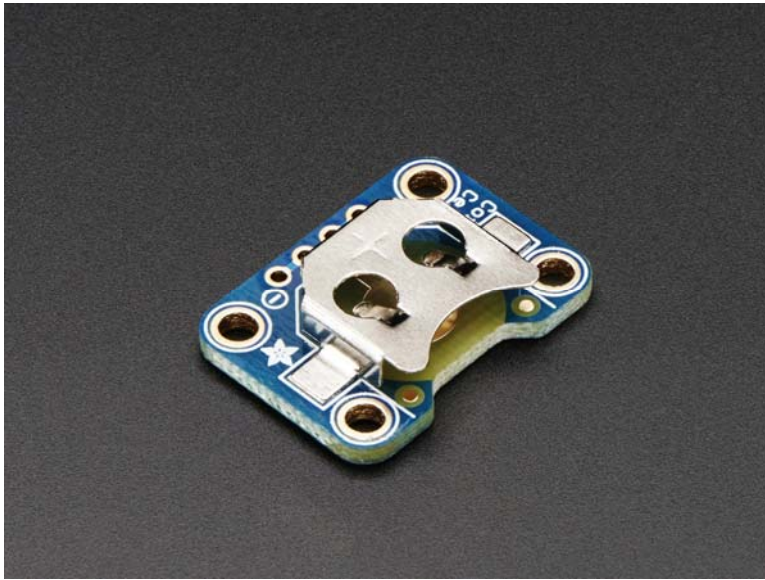




12mm Coin Cell Breakout Board

PRODUCT ID: 1868



. Description

Simple but effective - this breakout board has a CR1220 coin cell battery holder soldered on and 0.1" pitch breakout pins for easy connecting. Great for powering very low-current projects, or adding a battery backup circuit to a real-time-clock or similar.

Comes with one fully assembled and tested coin cell battery holder and a small stick of 0.1" header so you can solder it on and plug into a breadboard.

. Technical Details

Dimensions:

- 16.5mm x 23mm x 2mm / 0.65" x 0.9" x 0.08"
- Mounting hole distance: 10mm x 16mm / 0.4" x 0.6"
- Weight: 1.5g