

DRAWING MADE IN THIRD ANGLE PROJECTION

THIS DRAWING IS UNPUBLISHED. RELEASED FOR PUBLICATION, 19 .
 © COPYRIGHT 19 BY AMP INCORPORATED, HARRISBURG, PA. ALL INTERNATIONAL RIGHTS RESERVED. AMP PRODUCTS MAY BE COVERED BY U.S. AND FOREIGN PATENTS AND/OR PATENTS PENDING.

LOC AF DIST 50

P F

ZONE

LTR

REVISIONS

DESCRIPTION

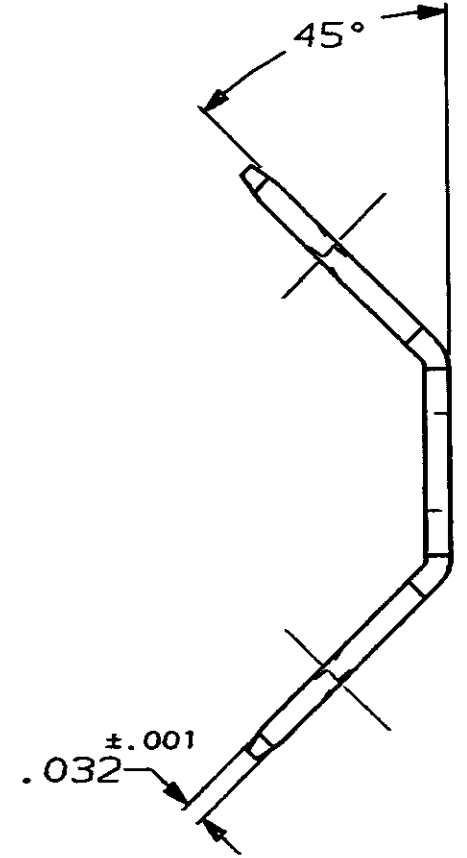
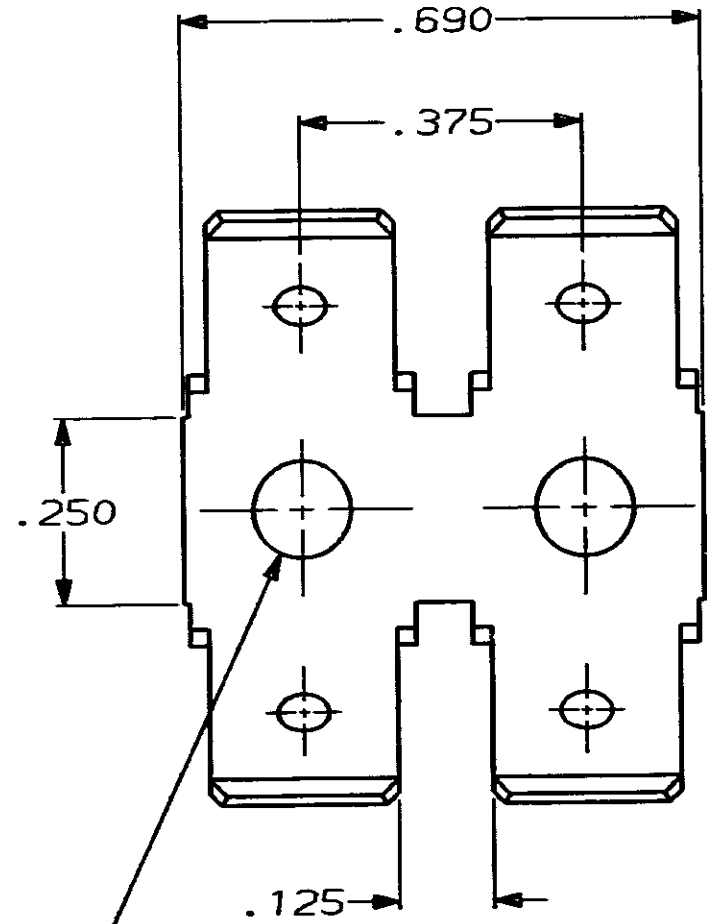
DATE

APPROVED

REDRAWN & SEPARATED FROM 41287

4/27/89

[Signature]



1 PARTS SUPPLIED IN PAIRS OF 2.

DIMPLE

FITS 250 SERIES FASTON RECEPTACLE

41478

PART NO

UNLESS OTHERWISE SPECIFIED DIMENSIONS ARE IN MM TOLERANCES ON:
 2 PL DEC ± -
 3 PL DEC ± .010
 ANGLES ± -

DR *JRR* 4/28/89
 CHK *MSE* 5/1/89
 APPD *C. Myers* 5/3/89
 APPD *C. Myers* 5/3/89

AMP AMP INCORPORATED
 Harrisburg, Pa. 17105

MATERIAL #2H BRASS

PRODUCT SPEC

NAME TAB, FASTON™ .250 SERIES

FINISH TIN

APPLICATION SPEC

SIZE **B** FSCM NO 00779 DRAWING NO 41478
 SCALE 4:1 SHEET 1 OF 1