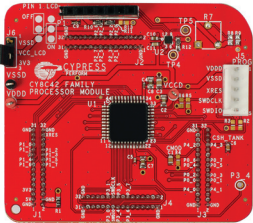
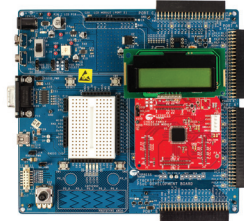


## CY8CKIT-038 PSoC® 4200 FAMILY



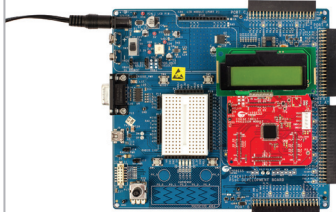
1

- Remove the CY8CKIT-038 PSoC® 4200 Family Processor Module from the package



2

- Place the CY8CKIT-038 Processor Module on the PSoC Development Board CY8CKIT-001
- Connect I2C LCD to P1 header of CY8CKIT-038 PSoC 4200 Family Processor Module



3

- Connect the AC power adapter (12 V/9 V, 1 A) to CY8CKIT-001 DVK



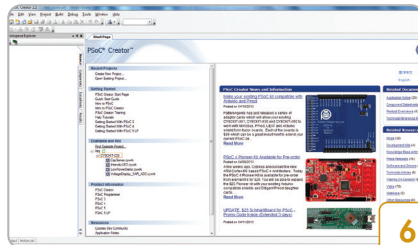
4

- After self test, LCD displays the success message on the screen



5

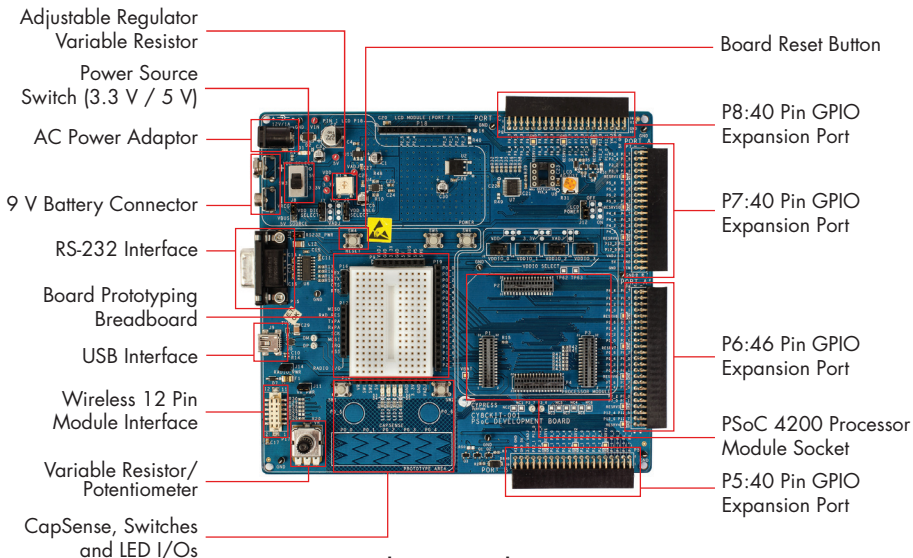
- Insert the PSoC 4200 Processor Module Kit CD/DVD. View the user's guide.
- Install PSoC Creator and Programmer.



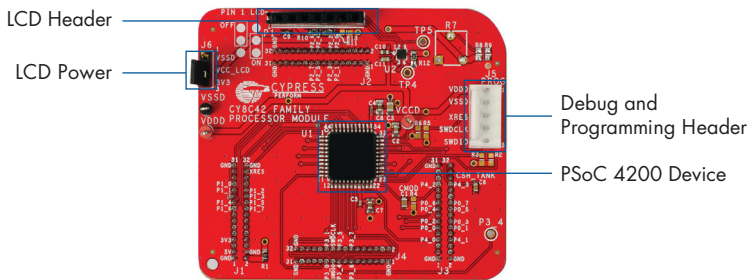
6

- Launch PSoC Creator. Open the code examples from the start page

# CY8CKIT-038 PSoC® 4200 FAMILY



**PSoC Development Board CY8CKIT-001**



**CY8CKIT-038 KIT Details**

For the latest information about this Kit and to download Kit Software and Hardware files, visit <http://www.cypress.com/go/CY8CKIT-038>