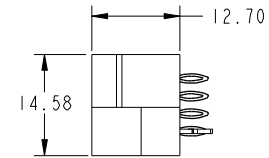
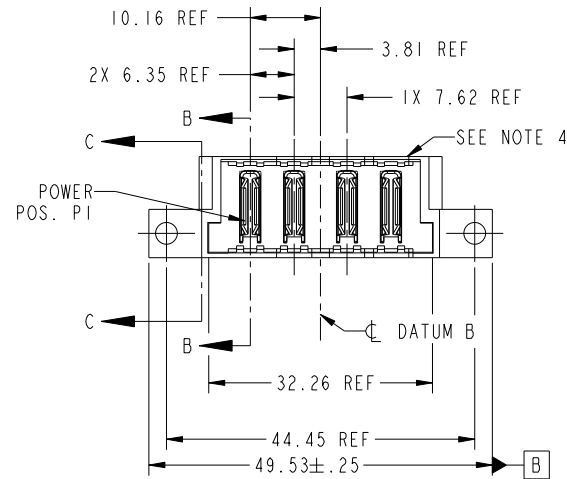


Tous droits strictement reserves. Reproduction ou communication a des tiers interdite sous quelque forme que ce soit sans autorisation écrite du propriétaire. Propriete de c FCI. Droits de reproduction FCI.

All rights strictly reserved. Reproduction or issue to third parties in any form whatever is not permitted without written authority from the proprietor. Property of FCI. Copyright FCI.



PRODUCT NO. 51963-018 NOTE ③	POWER					
	E1	P1	P2	P3	P4	E2
	HA	PC	PC	PC	PC	HA



CODE	DIM "M" MATING LENGTH	CONTACT TYPE
PC	[N/A]	POWER
HA	[N/A]	HOLD-DOWN

mat'l code				SEE NOTES		tolerances unless otherwise specified		CUSTOMER		FCI www.fciconnect.com	
ltr	ecn no.	dr	date	linear	0.X ± 0.3	projection		title 4p Vertical Press-Fit Header			
A	DG06-0429	JMG	10/18/06	angles	0.XX ± 0.13	MIM		product family		code	
				dr	0.XXX ± 0.051	← MIM →		PwrBlade		213	
				enr	0° ± 2°	scale		size		sheet	
				chr		1:1		dwg no		1 of 4	
				appd				51963-018			
sheet index	revision sheet	A	A	A	A						
		1	2	3	4						

cage code 22526

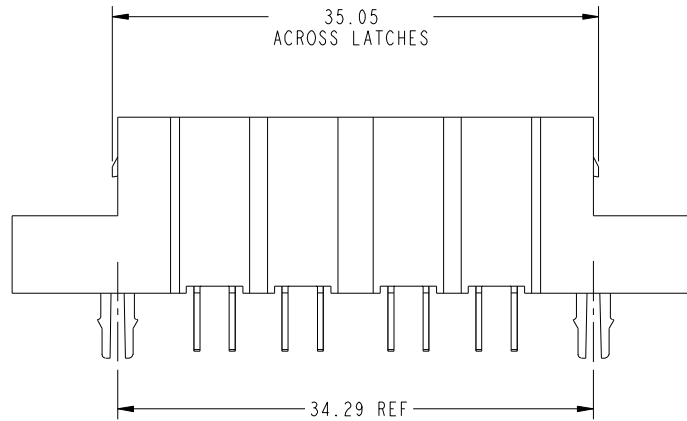
Pro/E

Tous droits strictement reserves. Reproduction ou communication a des tiers interdite sous quelque forme que ce soit sans autorisation écrite du propriétaire. Propriete de c FCI. Droits de reproduction FCI.

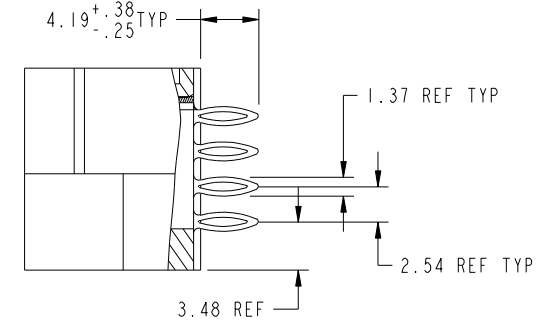


All rights strictly reserved. Reproduction or issue to third parties in any form whatever is not permitted without written authority from the proprietor. Property of FCI. Copyright FCI.

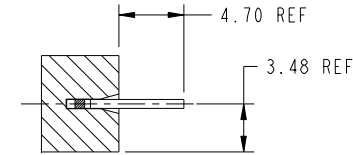
PRODUCT NUMBER  
51963-018--  
NOTE ③



SCALE 2:1



SECTION B-B  
SCALE 2:1



SECTION C-C  
SCALE 2:1

mat'l code		SEE NOTES		tolerances unless otherwise specified		CUSTOMER		 www.fciconnect.com	
ltr	ecr no.	dr	date	linear	0.X ±0.3	COPY		title	
A					0.XX ±0.13	projection		4p	
				angles	0.XXX ±0.051			Vertical Press-Fit Header	
				dr	0° ±2°	MIM		product family PwrBlade code	
				enr	JM GUO 10/18/06			size	
				chr	JEROME CHEN 10/18/06	scale		213	
				appd	BEER FU 10/18/06	1:1		sheet	
					JOSEPH HSIA 10/18/06			2 of 4	
sheet index		revision sheet						A	
								51963-018	

cage code 22526

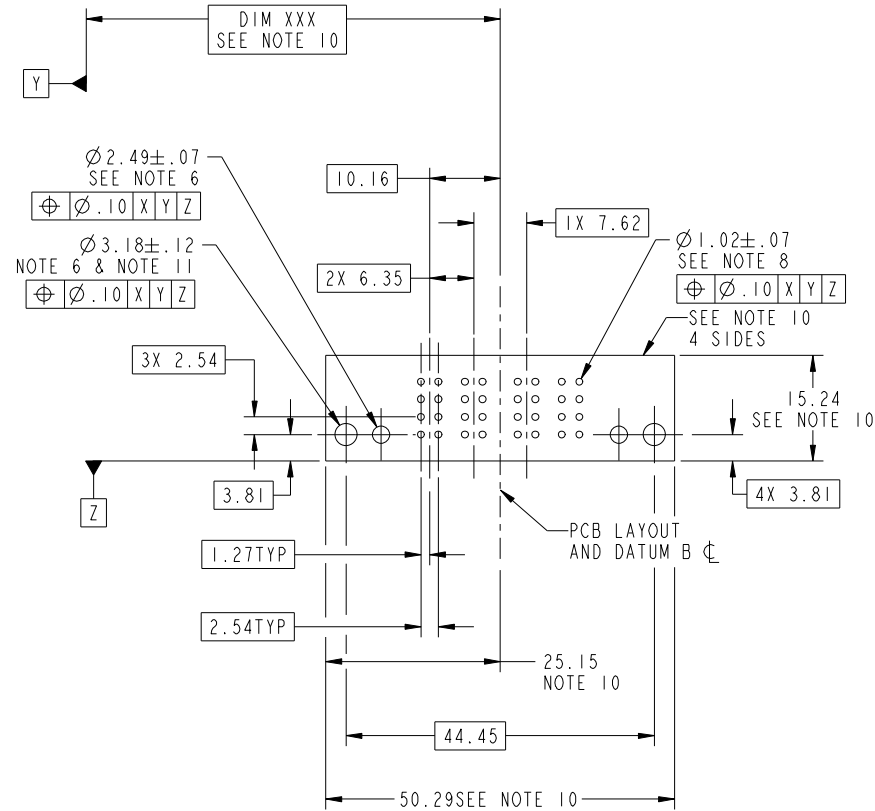
Pro/E

Tous droits strictement reserves. Reproduction ou communication a des tiers interdite sous quelque forme que ce soit sans autorisation écrite du propriétaire. Propriete de c FCI. Droits de reproduction FCI.



All rights strictly reserved. Reproduction or issue to third parties in any form whatever is not permitted without written authority from the proprietor. Property of FCI. Copyright FCI.

PRODUCT NUMBER  
51963-018--  
NOTE (3)



mat'l code				tolerances unless otherwise specified		CUSTOMER		FCI	
ltr	ecn no.	dr	date	linear	0.X ± 0.3	COPY		www.fciconnect.com	
A					0.XX ± 0.13	projection		title 4p	
				angles	0.XXX ± 0.051			Vertical Press-Fit Header	
				dr	0° ± 2°			product family PwrBlade code 213	
				engr	JM GUO 10/18/06	scale		size dwg no 213	
				chr	JEROME CHEN 10/18/06	1:1		sheet 3 of 4	
				appd	BEER FU 10/18/06			51963-018	
					JOSEPH HSIA 10/18/06				
sheet index		revision sheet							

cage code 22526

Pro/E

Tous droits strictement reserves. Reproduction ou communication a des tiers interdite sous quelque forme que ce soit sans autorisation écrite du propriétaire. Propriete de c FCI. Droits de reproduction FCI.

All rights strictly reserved. Reproduction or issue to third parties in any form whatever is not permitted without written authority from the proprietor. Property of FCI. Copyright FCI.



PRODUCT NUMBER
51963-018_- NOTE: 3

NOTES:

1. DIMENSIONS AND TOLERANCES ARE IN ACCORDANCE WITH ASME Y14.5M, 1994 UNLESS OTHERWISE SPECIFIED.

CONNECTOR NOTES:

2 HOUSING MATERIAL: UL 94 V-0 GLASS FILLED HIGH-TEMP THERMOPLASTIC

POWER CONTACT MATERIAL: COPPER ALLOY  
SIGNAL PIN MATERIAL: COPPER ALLOY

3. 51963-018;51963-018LF; PLATING SPEC. SEE PRINT:10064183

4. MANUFACTURER'S NAME, P/N AND DATE CODE APPEAR ON THIS SURFACE.

5. PRODUCT SPECIFICATION GS-12-149.  
APPLICATION SPECIFICATION BUS-20-067.

6. PACKAGED IN TRAYS.

PCB NOTES:

7. ALL HOLE DIAMETERS ARE FINISHED HOLE SIZE.

8. MOUNTING HOLES, WHERE APPLICABLE, ARE UNPLATED.

9.  $\varnothing 1.151 \pm 0.025$  DRILLED HOLES PLATED WITH  
0.008 MIN SnPb OR Sn OVER 0.03  
TO 0.08 Cu PLATING TO ACHIEVE  
 $\varnothing 1.02 \pm .07$  HOLE.

10. "DIM XXX" TO BE DETERMINED BY THE CUSTOMER.

11. CONNECTOR KEEP-OUT ZONE.

12. CUSTOMER SUPPLIES (2) #4-40 UNC SCREWS,  
HARDWARE TO MOUNT HEADER TO PC BOARD.

11. FOR PRESS FIT APPLICATION USE FCI CAM TOOL 430169-XXX.

mat'l code		SEE NOTES		tolerances unless otherwise specified		CUSTOMER		FCI		www.fciconnect.com	
ltr	ecr no.	dr	date	linear	$0.X \pm 0.3$	COPY		title			
A					$0.XX \pm 0.13$	projection		4p			
				angles	$0.XXX \pm 0.051$			Vertical Press-Fit Header			
				dr	$0^\circ \pm 2^\circ$	MIM		product family		PwrBlade	code
				enrg	JM GUO 10/18/06			size		dwg no	213
				chr	JEROME CHEN 10/18/06	scale		A		51963-018	sheet
				appd	BEER FU 10/18/06	1:1				4 of 4	
					JOSEPH HSIA 10/18/06						
sheet index	revision sheet										

cage code 22526

Pro/E