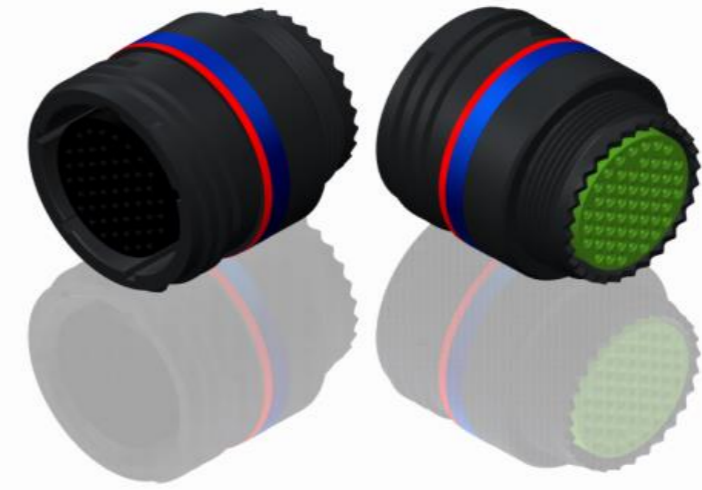


H G F E D C B A

4

4



LAYOUT SHOWN AS EXAMPLE

3

3

Keying Shown as example

CHARACTERISTICS

- Standard : Based on MIL-DTL-38999 Series III
- Shell Material : Aluminium
- Shell Plating : Black Zinc Nickel
- Insulator : Thermoplastic
- Contacts : Copper Alloy
- Seals & Grommet : Silicon Elastomer
- Contact Plating : Gold over copper Alloy 0.8µm minimum
- Durability : 500 Mating cycles
- Delivered with Souriau contacts and Accessories
- Temperature Range : -65°C to +175°C
- Salt Spray : 500 hours

| Connector dimension | |
|---------------------|----------|
| Dim | Nominal |
| F | 35 Max |
| Z | 31.5 Max |
| VV THREAD | M31x1-6g |

SOURIAU shall not be liable for any non-conformity or damage due to a use of the Products which does not comply with the Specifications issued by either of the Parties or by a third party (professional recommendation, technical notice.)

| Country | Jurisdiction & Control List |
|---------|-----------------------------|
| FR | Not Listed |

PN: 8D121Z11BN

| | | | |
|-----|------------|--------------------------|--------|
| A | 24-09-2016 | First Release | |
| ISS | DATE | Latest modification - by | MOD N° |

Designed By: _____ Date: _____ **CUSTOMER DRAWING**

| | | | |
|--------------|---------------------------------|--|--|
| TITLE | Aluminium Inline plug 8D series | | |
|--------------|---------------------------------|--|--|

| | | | |
|-------|--|----------------------------|-----------------|
| SCALE | | General linear Tolerances: | NPRDS / PROJECT |
| NA | | ±-- | 859 |

| | | |
|----------------|------------------------|--|
| SOURIAU | WWW.SOURIAU.COM | This document is the property of SOURIAU it must not be reproduced or communicated without permission |
|----------------|------------------------|--|

| | | |
|-----------|------------------------------------|------------|
| FORMAT | SOURIAU DRG N° 8D121Z11BN-C | SHEET |
| A3 | | 1/2 |

| | | | | | | | | | |
|----------------|------------------------|---|---|----|---|----|---|---|------------------------------------|
| BASIC SERIES: | 8D | 1 | - | 21 | Z | 11 | B | N | ORIENTATION : N |
| SHELL TYPE : | In line Receptacle | | | | | | | | CONTACT TYPE : SOCKET(500 Matings) |
| CONTACT TYPE : | Standard Crimp Contact | | | | | | | | CONTACT LAYOUT : 21-11 |
| SHELL SIZE : | 21 | | | | | | | | |
| PLATING : | Z = Black Zinc Nickel | | | | | | | | |

2

2

1

1

H G F E D C B A

4
3
2
1

4
3
2
1

H G F E D C B A

H G F E D C B A

4
3
2
1

Contact Layout



| Contacts (Insert arrangement 21-11) | | | | | |
|--|-------------|-------------|---------------------|-------------|-------------|
| Contact position ID | Location | | Contact position ID | Location | |
| | X-axis (mm) | Y-axis (mm) | | X-axis (mm) | Y-axis (mm) |
| A | +121 (3.07) | +332 (8.43) | G | -348 (8.84) | -061 (1.55) |
| B | +306 (7.77) | +177 (4.50) | H | -306 (7.77) | +177 (4.50) |
| C | +348 (8.84) | -061 (1.55) | J | -121 (3.07) | +332 (8.43) |
| D | +227 (5.77) | -270 (6.86) | K | +000 (0.00) | +123 (3.12) |
| E | +000 (0.00) | -353 (8.97) | L | +000 (0.00) | -115 (2.92) |
| F | -227 (5.77) | -270 (6.86) | --- | --- | --- |

| Shell size | Arrangement no. | Number of contacts | Size contacts | Service rating | Contact location | Supersedes |
|------------|-----------------|--------------------|---------------|----------------|------------------|------------|
| 21 | -11 | 11 | 12 | I | All | MS20055-11 |

SOURIAU shall not be liable for any non-conformity or damage due to a use of the Products which does not comply with the Specifications issued by either of the Parties or by a third party (professional recommendation, technical notice.)

| Country | Jurisdiction & Control List |
|---------|-----------------------------|
| FR | Not Listed |

PN: 8D121Z11BN

| | | | |
|----------------|------------------------------------|----------------------------|---|
| A | 24-09-2016 | First Release | |
| ISS | DATE | Latest modification - by | MOD N° |
| Designed By: | | Date: | CUSTOMER DRAWING |
| TITLE | Aluminium Inline plug 8D series | | |
| SCALE | | General linear Tolerances: | NPRDS / PROJECT |
| NA | | ±-- | 859 |
| SOURIAU | WWW.SOURIAU.COM | | This document is the property of SOURIAU it must not be reproduced or communicated without permission |
| FORMAT | SOURIAU DRG N° 8D121Z11BN-C | | SHEET 2/2 |