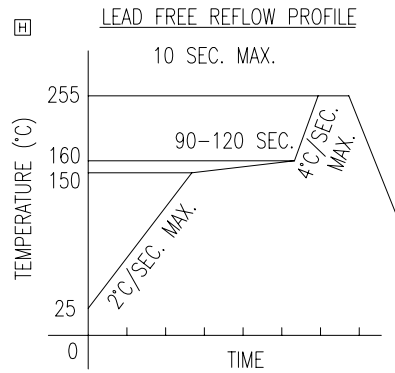
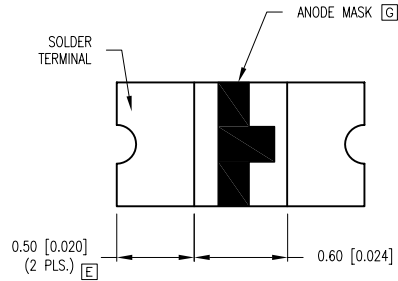
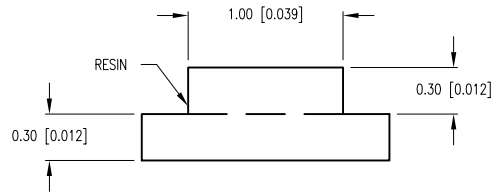
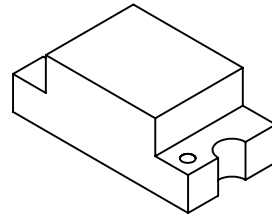
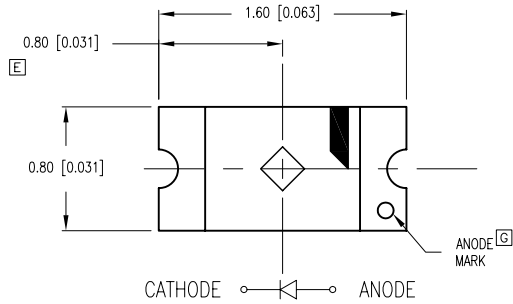
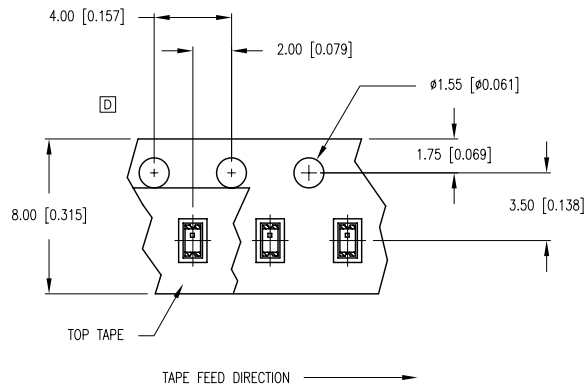


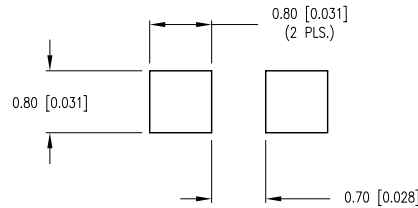
PART NUMBER	SML-LX0603SRW-TR	REV.	J
DATE	E.C.N. NUMBER AND REVISION COMMENTS		REV.
09.17.97	E.C.N. #10BRDR. & REDRAWN.		A
09.30.98	E.C.N. #10644.		B
04.30.99	E.C.N. #10933.		C
07.18.00	E.C.N. #10644.		D
12.03.02	E.C.N. #10933.		E
03.14.03	E.C.N. #10967.		F
11.20.03	E.C.N. #11061.		G
12.03.04	E.C.N. #11148.		H
05.27.08	E.C.N. #11508.		I
09.26.11	E.C.N. #10BRDR.		J



TOTAL TIME ABOVE 220°C IS 60 SECONDS MAX.



RECOMMENDED SOLDER PAD LAYOUT



ELECTRO-OPTICAL CHARACTERISTICS $T_A=25^\circ\text{C}$ $I_f=20\text{mA}$

PARAMETER	MIN	TYP	MAX	UNITS	TEST COND
PEAK WAVELENGTH		660		nm	
FORWARD VOLTAGE		1.7	2.2	V_f	$I_f=100\mu\text{A}$
REVERSE VOLTAGE	4.0			V_r	$I_f=20\text{mA}$
AXIAL INTENSITY		45		mcd	
VIEWING ANGLE		140		2x theta	
EMITTED COLOR:	RED				
EPOXY LENS FINISH:	MILKY WHITE DIFFUSED				

LIMITS OF SAFE OPERATION AT 25°C

PARAMETER	MAX	UNITS
PEAK FORWARD CURRENT*	150	mA
STEADY CURRENT	30	mA
POWER DISSIPATION	50	mW
DERATE FROM 25°C	-1.2	mW/°C
OPERATING TEMP.	-25 TO +85	°C
STORAGE TEMP.	-30 TO +85	°C

* $t < 10\mu\text{s}$

NOTES:

- THE CATHODE IS ORIENTED TOWARDS THE TAPE SPROCKET HOLE.

CAUTION: MOISTURE SENSITIVE DEVICE
PER JEDEC LEVEL 2 STANDARDS

*UNLESS OTHERWISE SPECIFIED TOLERANCES PER DECIMAL PRECISION ARE: X=±1 (±0.039), X.X=±0.5 (±0.020), X.XX=±0.25 (±0.010), X.XXX=±0.127 (±0.005). LEAD SIZE=±0.05 (±0.002), LEAD LENGTH=±0.75 (±0.030). MIN= ^{+DECIMAL PRECISION} _{-0.00} MAX= ^{+0.00} _{-DECIMAL PRECISION}