

MICRO SWITCH

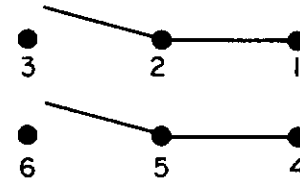
# SWITCH - TOGGLE FLUSH KEY

CATALOG LISTING  
**2TP8-70**

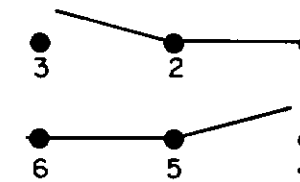
THIS DRAWING COVERS A PROPRIETARY ITEM AND IS THE PROPERTY OF MICRO SWITCH, A DIVISION OF HONEYWELL. THIS DRAWING IS NOT TO BE COPIED OR USED WITHOUT THE APPROVAL OF MICRO SWITCH.

## CIRCUIT DIAGRAM CIRCUIT MADE WITH LEVER DEPRESSED ON

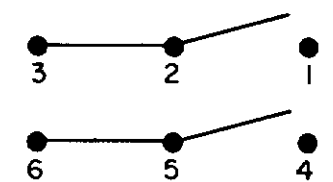
LUG SIDE  
(MOMENTARY POSITION)



CENTER  
(MAINTAINED POSITION)



OPPOSITE LUG  
(MOMENTARY POSITION)

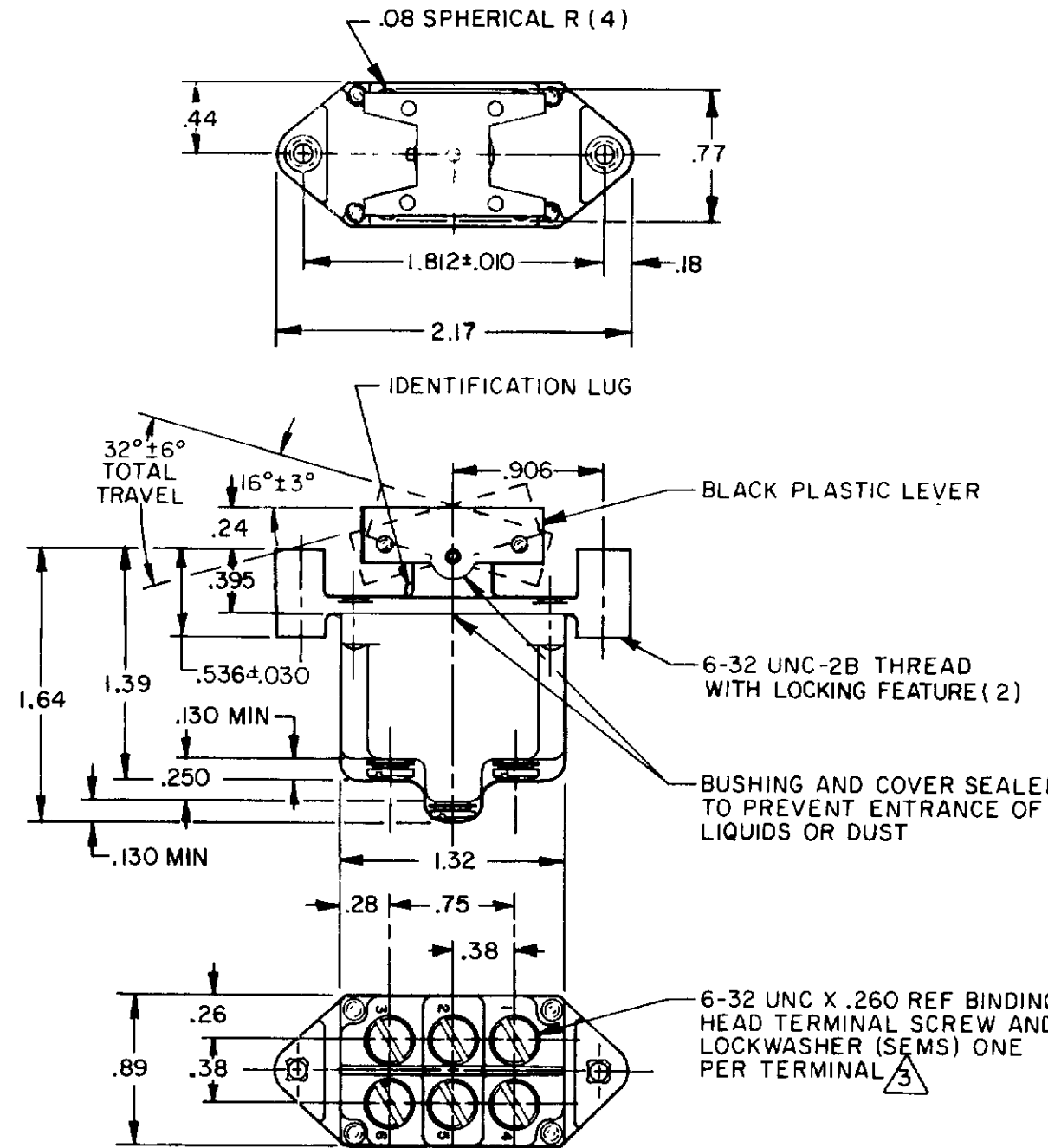


### ELECTRICAL DATA

10A-125, 250, 277VAC  
 1/4HP-125VAC; 1/2HP-250, 277VAC  
 3A-125VAC "L" L192



DRAWING NUMBER **2TP8-70** PAGE 1 OF 1  
 ISSUE **M** 9  
 REVISIONS:  
 A RE-INS PR-11234 21 MAY 82  
 B CO57496B C J H 24 SEP 85  
 C CO58717-B W J K 22 OCT 86  
 D CO77897 W J H 10 NOV 88  
 E 200032 J J A 21 JAN 00  
 F 202714 D L T 4 APR 01  
 CHECK C E B 1 JUNE 82  
 DRAWN T M M 21 MAY 82  
 RASTER FO-52854-C



- NOTES
- 1 - THESE SWITCHES WILL WITHSTAND TEMPERATURE OF 160°F
  - 2 - MICRO SWITCH CATALOG LISTING MARKED ON SIDE OF SWITCH
  - 3 - SCREWS FURNISHED UNASSEMBLED

THIRD ANGLE PROJECTION

SCALE FULL

DO NOT SCALE PRINT

TOLERANCES

APPLY TO DESIGN UNITS. CONVERSIONS ARE ONLY FOR REFERENCE. UNLESS NOTED, TOLERANCES ARE ±

	DI	TOL	DI	TOL
	mm	mm/in	in	mm/in
NO PLACES	X	1/64	X	0.015
ONE PLACE	X.X	0.4/0.15	X.X	0.01/0.3
TWO PLACES	X.XX	0.15/0.05	X.XX	0.38/0.15
THREE PLACES	X.XXX	0.15/0.05	X.XXX	0.15/0.05

DESIGN UNITS  SI METRIC  US CUSTOMARY

RAW MATERIAL-COMMERCIAL STANDARD  
 MICRO SWITCH STANDARDS APPLY  
 DIMENSIONS ARE TO BE MET BEFORE  
 PROTECTIVE COATINGS ARE APPLIED

WEIGHT .14 LB. EST.