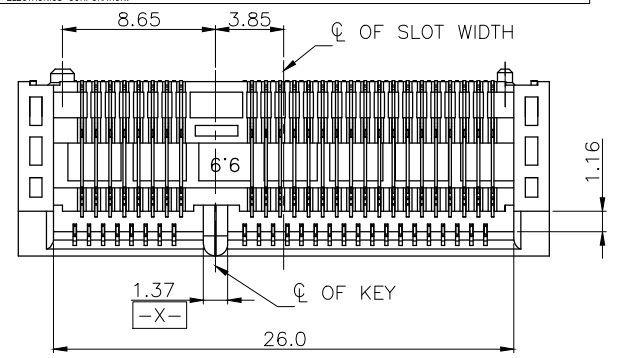


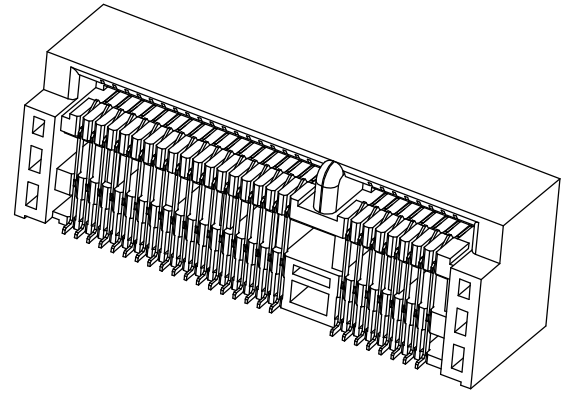
THIS DRAWING IS UNPUBLISHED.  
 RELEASED FOR PUBLICATION  
 ALL RIGHTS RESERVED.  
 © COPYRIGHT 2010 BY TYCO ELECTRONICS CORPORATION.

| LOC |     | DIST                                     |         | REVISIONS |      |  |  |
|-----|-----|--|---------|-----------|------|--|--|
| P   | LTR | DESCRIPTION                              | DATE    | DWN       | APVD |  |  |
| C   | 1   | REVISED, ECR-14-004907, REMOVE 2041216-2 | 05AUG14 | S.W.      | H.L. |  |  |



NOTES:

- MATERIAL:  
 HOUSING: LCP WITH 30% GF, UL 94V-0, BLACK COLOR.  
 CONTACTS: PHOSPHOR BRONZE.  
 PEGS: BRASS.
- FINISH:  
 CONTACTS: (SEE TABLE) GOLD PLATED ON CONTACT AREA, GOLD FLASH ON SOLDER AREA, WITH ENTIRE CONTACT UNDERPLATED 1.27mm [50m"] MIN. NICKEL.  
 PEGS: 3.048mm [120m"] MIN. MATTE-TIN OVER 1.27mm [50m"] MIN. NICKEL.
- REFLOW SOLDER CAPABLE TO 260° PER TEC-109-201, CONDITION B.



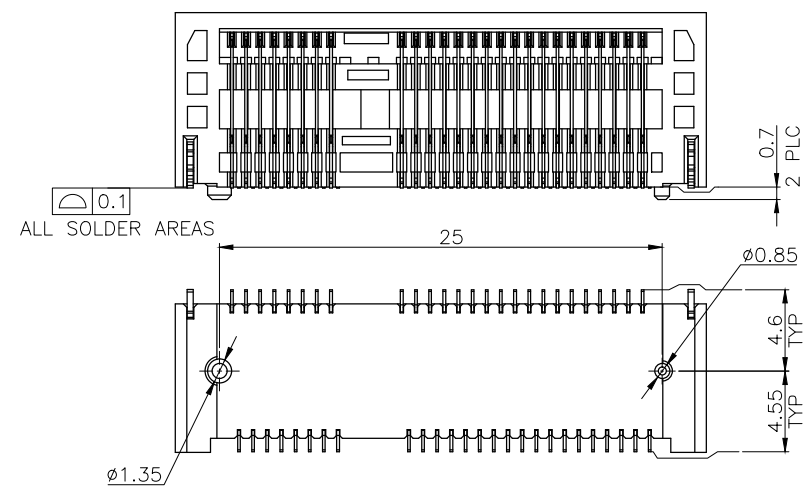
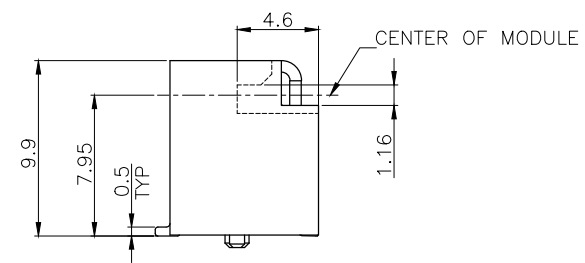
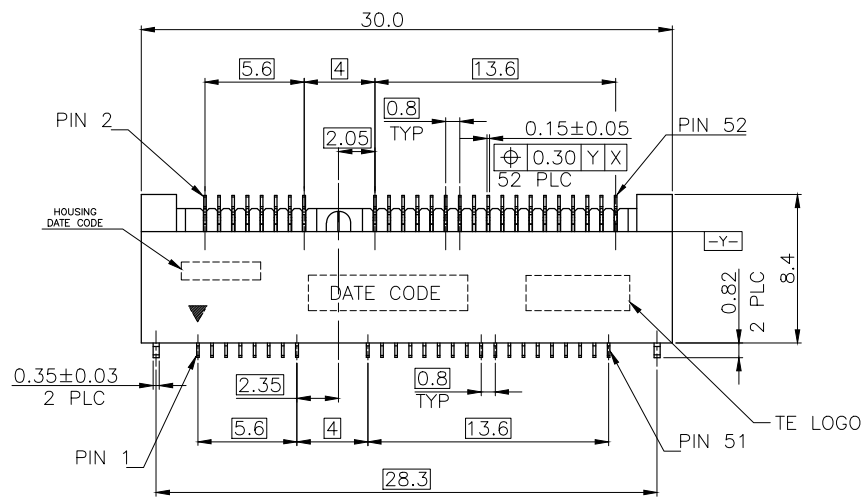
CONNECTOR PIN-OUT DEFINITIONS

| PIN# | NAME               | PIN# | NAME       |
|------|--------------------|------|------------|
| 51   | RESERVED           | 52   | +3.3Vaux   |
| 49   | RESERVED           | 50   | GND        |
| 47   | RESERVED           | 48   | +15V       |
| 45   | RESERVED           | 46   | LED_WPAN#  |
| 43   | GND                | 44   | LED_WLAN#  |
| 41   | +3.3Vaux           | 42   | LED_WWAN#  |
| 39   | +3.3Vaux           | 40   | GND        |
| 37   | GND                | 38   | USB_D+     |
| 35   | GND                | 36   | USB_D-     |
| 33   | PETp0              | 34   | GND        |
| 31   | PETn0              | 32   | SMB_DATA   |
| 29   | GND                | 30   | SMB_CLK    |
| 27   | GND                | 28   | +15V       |
| 25   | PERp0              | 26   | GND        |
| 23   | PERn0              | 24   | +3.3Vaux   |
| 21   | GND                | 22   | PERST#     |
| 19   | RESERVED* (UIM_C4) | 20   | W_DISABLE# |
| 17   | RESERVED* (UIM_C8) | 18   | GND        |

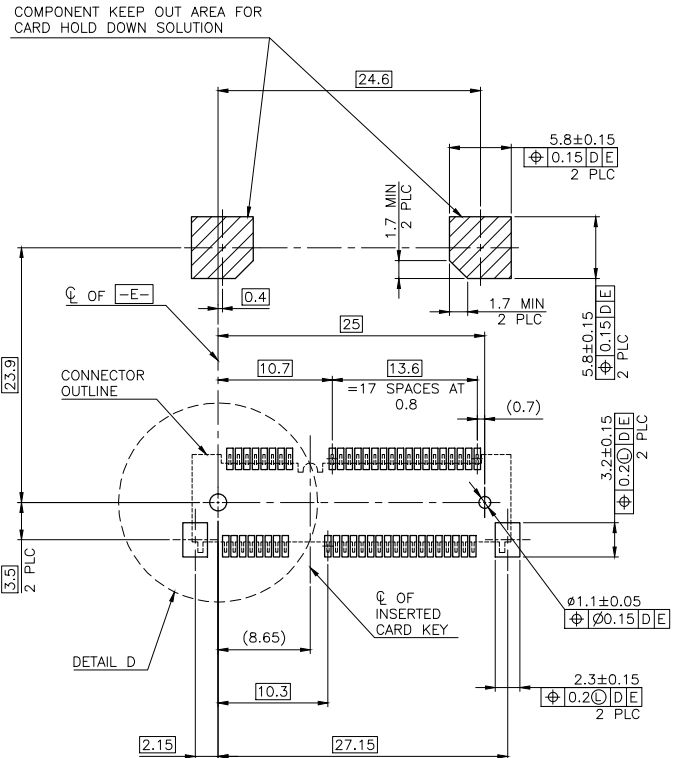
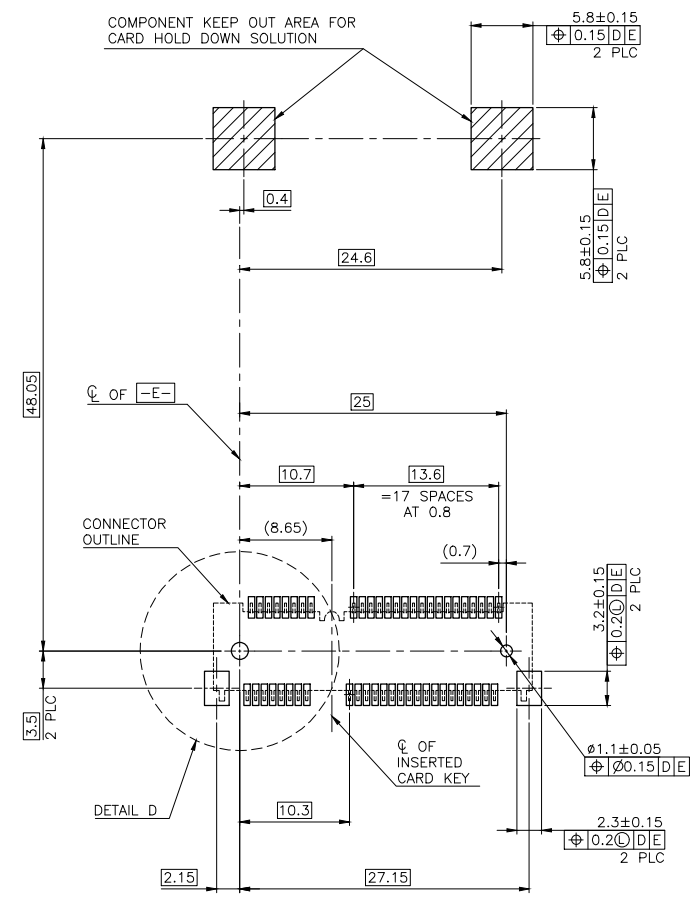
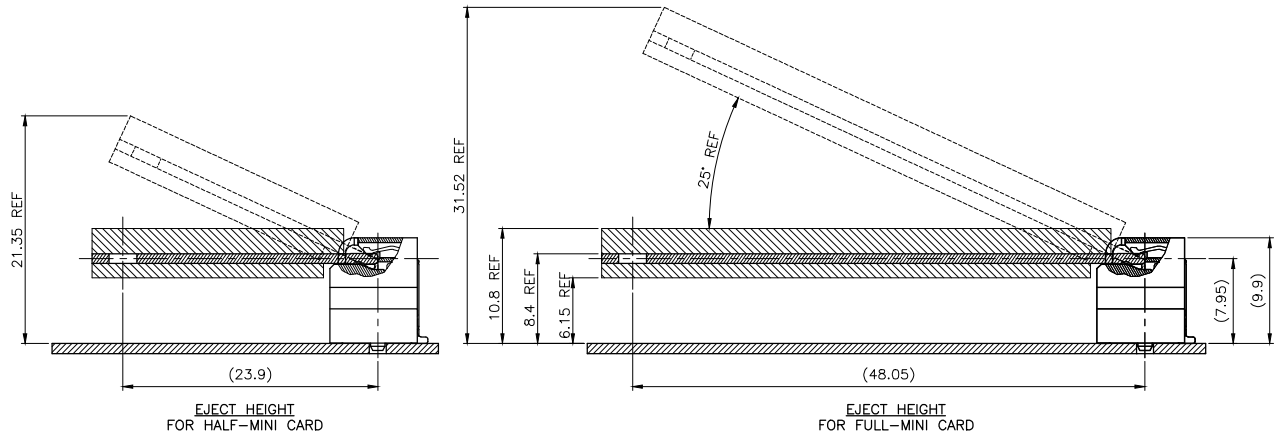
| MECHANICAL KEY |         |    |           |
|----------------|---------|----|-----------|
| 15             | GND     | 16 | UIM_VPP   |
| 13             | REFCLK+ | 14 | UIM_RESET |
| 11             | REFCLK- | 12 | UIM_CLK   |
| 9              | GND     | 10 | UIM_DATA  |
| 7              | CLKREQ# | 8  | UIM_PWR   |
| 5              | COEX2   | 6  | 1.5V      |
| 3              | COEX1   | 4  | GND       |
| 1              | WAKE#   | 2  | 3.3Vaux   |

\* RESERVED FOR FUTURE UIM INTERFACE (IF NEEDED)

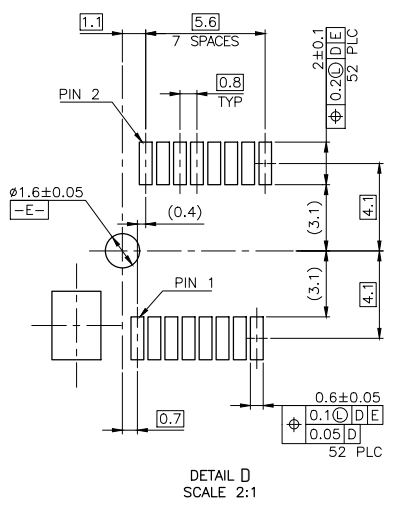


|  |  |                                |  |            |
|--|--|--------------------------------|--|------------|
| THIS DRAWING IS A CONTROLLED DOCUMENT. |  | DWN<br>A. WU<br>28DEC2009      | 0.254µm [10µ"] 2041216-1                       |            |
| DIMENSIONS: MM                         |  | CHK<br>S. CHIEN<br>28DEC2009   | MIN. GOLD THICKNESS PART NUMBER                |            |
| TOLERANCES UNLESS OTHERWISE SPECIFIED: |  | APVD<br>W. KODAMA<br>28DEC2009 | TE Connectivity                                |            |
| 0 PLC ± -                              |  | PRODUCT SPEC                   | PCI EXPRESS MINI CARD CONNECTOR, 9.9 MM HEIGHT |            |
| 1 PLC ±0.3                             |  | APPLICATION SPEC               | 108-99102                                      |            |
| 2 PLC ±0.2                             |  | SIZE                           | CAGE CODE                                      | DRAWING NO |
| 3 PLC ± -                              |  | WEIGHT                         | A2 00779                                       | G= 2041216 |
| 4 PLC ± -                              |  | CUSTOMER DRAWING               | RESTRICTED TO                                  |            |
| ANGLES ± °                             |  | SCALE                          | SHEET 1 of 4                                   |            |
| FINISH                                 |  | REV C1                         |  |            |
| SEE NOTE                               |  |                                |  |            |

|             |      |           |     |             |
|-------------|------|-----------|-----|-------------|
| LOC         | DIST | REVISIONS |     |             |
| DW          | ---  | P         | LTR | DESCRIPTION |
|             |      |           |     | DATE        |
|             |      |           |     | DWN         |
|             |      |           |     | APVD        |
| SEE SHEET 1 |      |           |     |             |



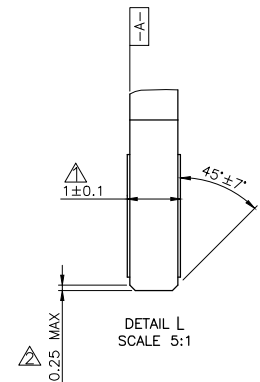
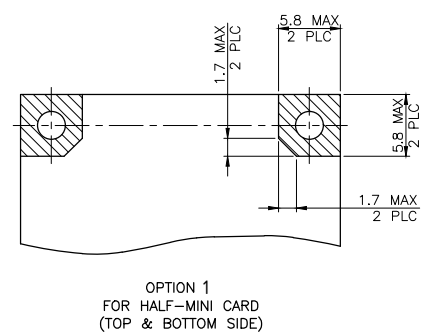
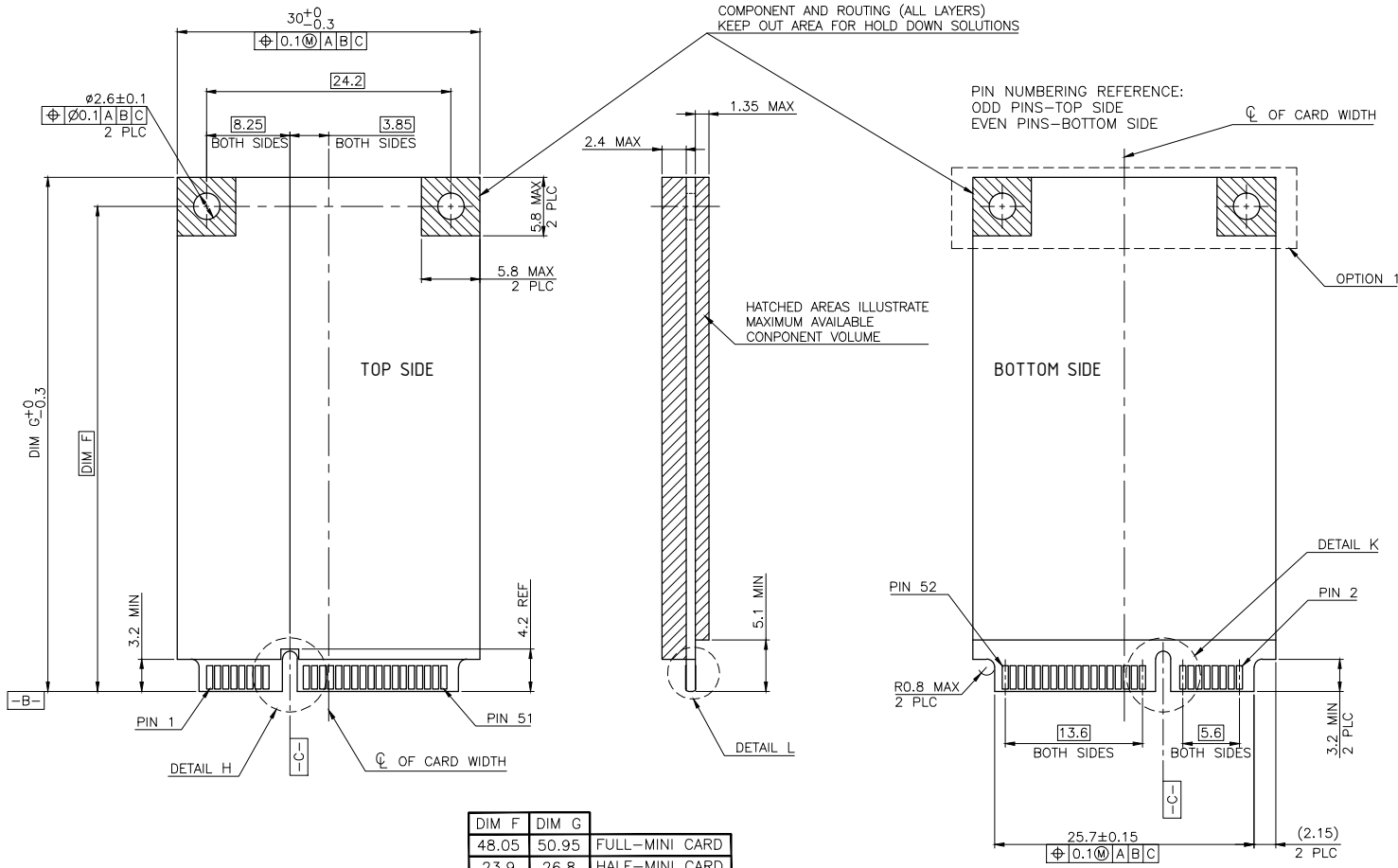
-D- IS THE TOP SURFACE OF PCB.  
 RECOMMENDED P.C. BOARD PATTERN LAYOUT  
 FOR HALF-MINI-ONLY CONNECTOR  
 (TOP VIEW)



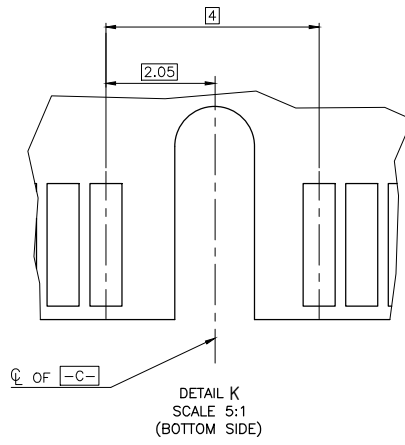
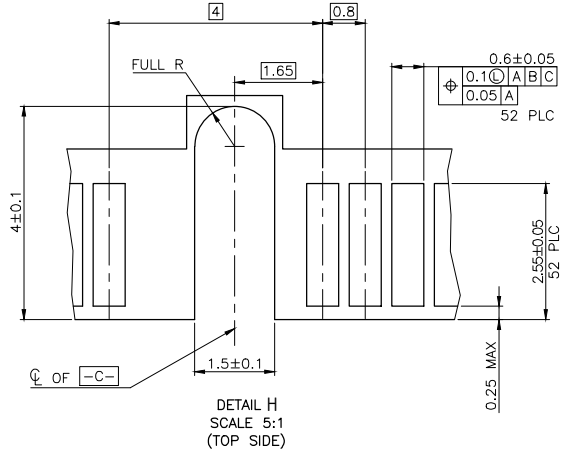
-D- IS THE TOP SURFACE OF PCB.  
 RECOMMENDED P.C. BOARD PATTERN LAYOUT  
 FOR FULL-MINI-ONLY CONNECTOR  
 (TOP VIEW)

|  |   |                  |  |               |
|--|---|------------------|--|---------------|
| THIS DRAWING IS A CONTROLLED DOCUMENT. |   | DWN              | TE Connectivity                                |               |
| DIMENSIONS: MM                         |   | CHK              | NAME   |               |
| TOLERANCES UNLESS OTHERWISE SPECIFIED: |   | APVD             | PCI EXPRESS MINI CARD CONNECTOR, 9.9 MM HEIGHT |               |
| 0 PLC                                  | ± | PRODUCT SPEC     | SIZE   | CAGE CODE     |
| 1 PLC                                  | ± | APPLICATION SPEC | DRAWING NO                                     | RESTRICTED TO |
| 2 PLC                                  | ± | WEIGHT           | A2   | 00779         |
| 3 PLC                                  | ± |                  | G= 2041216                                     |               |
| 4 PLC                                  | ± |                  | SCALE  | SHEET         |
| ANGLES                                 | ± |                  |  | 2 of 4        |
| FINISH                                 | ± |                  |  | REV C1        |
| MATERIAL                               |   | CUSTOMER DRAWING |  |               |

| LOC | DIST | REVISIONS   |      |     |      |
|-----|------|-------------|------|-----|------|
| P   | LTR  | DESCRIPTION | DATE | DWN | APVD |
| DW  | -    | SEE SHEET 1 |      |     |      |



| DIM F | DIM G |                |
|-------|-------|----------------|
| 48.05 | 50.95 | FULL-MINI CARD |
| 23.9  | 26.8  | HALF-MINI CARD |

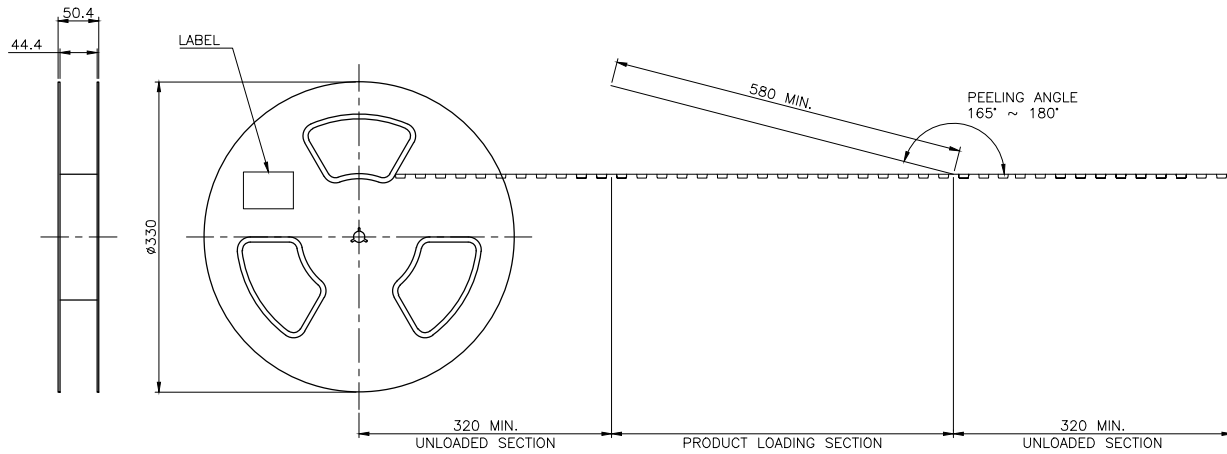


- NOTES:
- ▲ CARD THICKNESS APPLIES ACROSS TABS AND INCLUDES PLATING AND/OR METALLIZATION.
  - ▲ EDGE BEVEL MUST BE PRESENT AND FREE OF CUTTING BURRS FROM PCB AND CONTACT MATERIALS.

|  |  |                  |  |  |
|--|--|------------------|--|--|
| THIS DRAWING IS A CONTROLLED DOCUMENT. |  | DWN              | TE Connectivity                                |  |
| DIMENSIONS: MM                         |  | CHK              | NAME   |  |
| TOLERANCES UNLESS OTHERWISE SPECIFIED: |  | APVD             | PCI EXPRESS MINI CARD CONNECTOR, 9.9 MM HEIGHT |  |
| 0 PLC ±                                |  | PRODUCT SPEC     | SIZE CAGE CODE DRAWING NO RESTRICTED TO        |  |
| 1 PLC ±                                |  | APPLICATION SPEC | A2 00779 C= 2041216                            |  |
| 2 PLC ±                                |  | WEIGHT           | SCALE SHEET 3 of 4 REV C1                      |  |
| 3 PLC ±                                |  | CUSTOMER DRAWING |  |  |
| 4 PLC ±                                |  |                  |  |  |
| ANGLES ±                               |  |                  |  |  |
| FINISH                                 |  |                  |  |  |

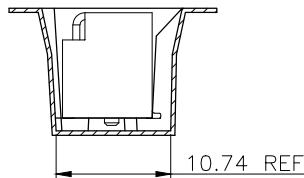
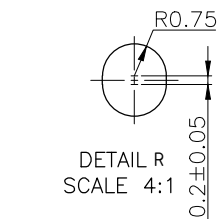
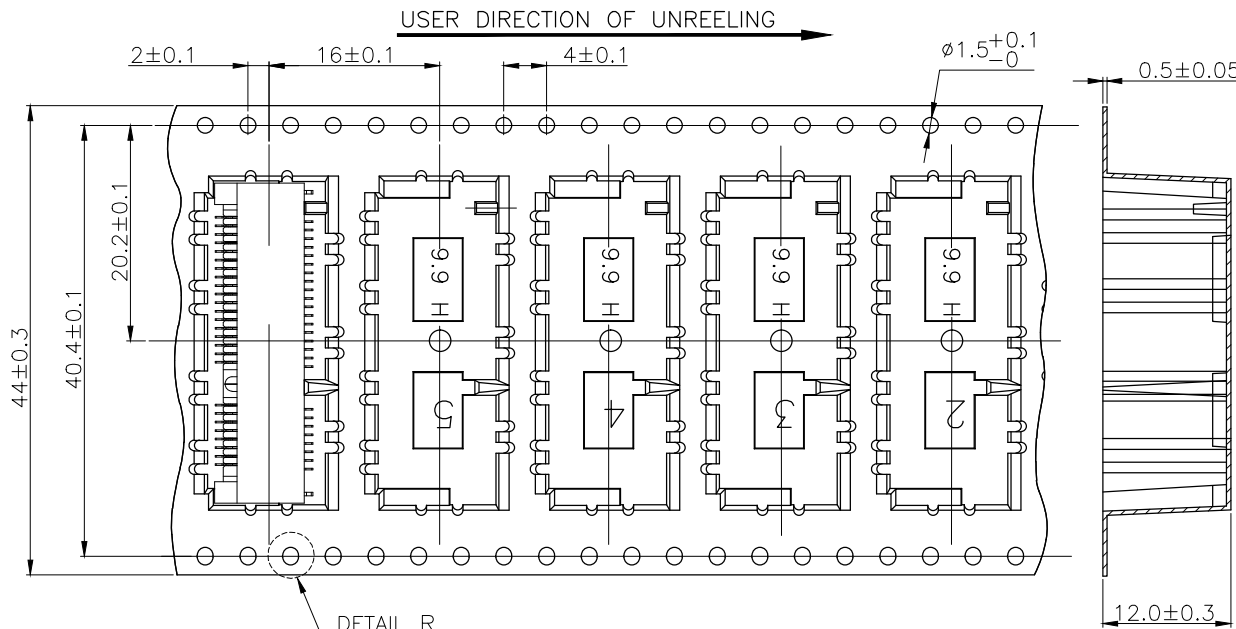
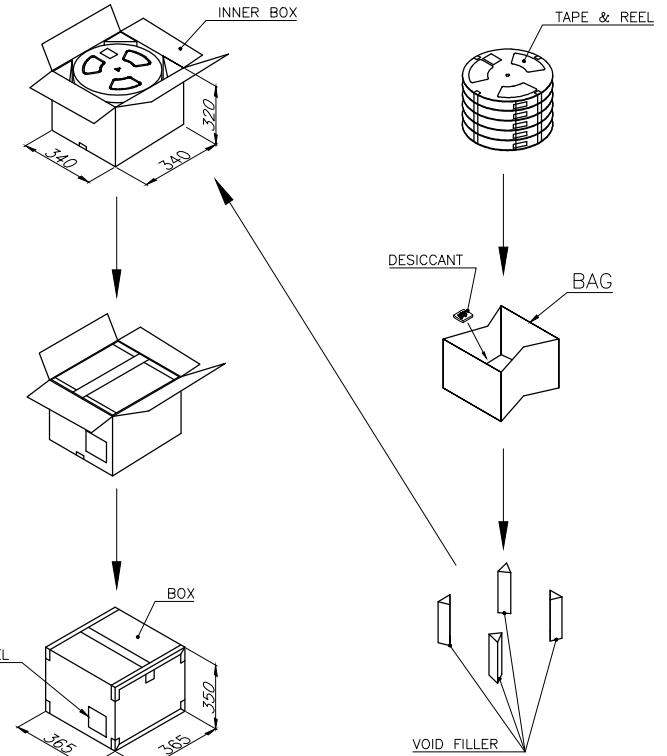
THIS DRAWING IS UNPUBLISHED.  
 RELEASED FOR PUBLICATION  
 COPYRIGHT 2010 BY TYCO ELECTRONICS CORPORATION. ALL RIGHTS RESERVED.

| LOC         | DIST | REVISIONS   |      |     |      |
|-------------|------|-------------|------|-----|------|
| P           | LTR  | DESCRIPTION | DATE | DWN | APVD |
| DW          | -    |             |      |     |      |
| SEE SHEET 1 |      |             |      |     |      |



NOTES:

- MATERIAL:  
 BOX: FIBREBOARD, CORRUGATED, DOUBLE WALL.  
 COVER TAPE: POLYSTYRENES, 120°C HEAT-RESISTANT TEMPERATURE, TRANSPARENT COLOR.  
 CARRIER TAPE: POLYSTYRENES, 120°C HEAT-RESISTANT TEMPERATURE, TRANSPARENT COLOR.  
 REEL: HIPS, 70°C HEAT-RESISTANT TEMPERATURE, BLUE COLOR.  
 BAG: POLYETHYLENES, 100°C HEAT-RESISTANT TEMPERATURE, TRANSPARENT COLOR.
- EACH BAG SHALL BE INCLUDED DESICCANT.
- PEELING STRENGTH: 0.1 ~ 1.3 N (10 ~ 130 GRAMS).
- PEELING SPEED: 300 mm/min.



|              |            |          |           |         |
|--------------|------------|----------|-----------|---------|
| 8.54 Kg      | 4.8 Kg     | 300      | 5         | 1500    |
| GROSS WEIGHT | NET WEIGHT | PCS/TAPE | REELS/BOX | PCS/BOX |

THIS DRAWING IS A CONTROLLED DOCUMENT.

|                |  |                  |     |
|----------------|--|------------------|-----|
| DIMENSIONS: MM | TOLERANCES UNLESS OTHERWISE SPECIFIED: | DWN              | CHK |
| 0 PLC ±        | 1 PLC ±                                | APVD             |     |
| 2 PLC ±        | 3 PLC ±                                | PRODUCT SPEC     |     |
| 4 PLC ±        | ANGLES ±                               | APPLICATION SPEC |     |
| MATERIAL       | FINISH                                 | WEIGHT           |     |

CUSTOMER DRAWING

|   |                 |
|---|-----------------|
| <b>TE</b> TE Connectivity                                 |                 |
| NAME<br>PCI EXPRESS MINI CARD CONNECTOR,<br>9.9 MM HEIGHT |                 |
| SIZE A2   | CAGE CODE 00779 |
| DRAWING NO. C-2041216                                     | RESTRICTED TO   |
| SCALE   | SHEET 4 of 4    |
| REV C1  |                 |