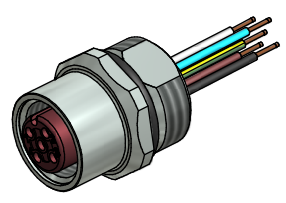


Contact assignment:

- 1) brown
- 2) white
- 3) blue
- 4) black
- 5) green-yellow



Technical specification:

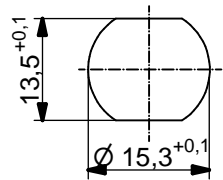
Rated voltage: IEC 61076-2-101	4pos 5pos 250 V 60 V
Current rating: IEC 61076-2-101	4 A at 40°C
Insulation resistance: IEC 60512	>=100 MΩ
Pollution degree: IEC 60664-1	3/2
Degree of protection: IEC 60529	IP 67, in mated condition
Temperature range: IEC 60664-1	+100°C - 30.000h +125°C - 8.000h +150°C - 2.000h
Mating cycles: IEC 60512-9a	>=100

Materials:

Contact:	CuZn, CuBe
Contact plating:	Nickel, gold plated
Contact carrier:	PBT GF, UL 94
Sealing:	FPM
Socket housing:	CuZn, nickel plated
Grouting:	Polyurethane-resin, UL 94

Installation specification:

recommended torque:	1-1,2 Nm
Conec installation tool:	Torque wrench: 36-000200 Insert across flats 17: 36-000230



Minimum wall thickness 1,5mm, alternativ panel cut-out d=15,3

Art.-Nr.:	Bezeichnung:	Pol	Länge L:	Litze:
43-01076	SAL - HT - 12 - FK4 - 0,5 - 9	4	0,5m	Copolymer, UL AWG 24
43-xxxxx	SAL - HT - 12 - FK4 - ... - 9	4	x	
43-01078	SAL - HT - 12 - FK5 - 0,5 - 9	5	0,5m	
43-xxxxx	SAL - HT - 12 - FK5 - ... - 9	5	x	

DO NOT ALTER CAD DRAWING BY HAND	Directive 2002/95/EC RoHS compliant	Index: b 01.09.10 fro Ä3696 specification of wires changed, datasheet revised	dim. in mm	title: Female socket M12x1 with wires, frontmounting, Ht, PG9	
		tolerance of wire: L <= 0,5m: L + 20mm L > 0,5m: L + 4%			date name
		THIS DRAWING MAY NOT BE COPIED OR REPRODUCED IN ANY WAY, AND MAY NOT BE PASSED ON TO A THIRD PARTY WITHOUT WRITTEN PERMISSION. OWNERSHIP AND COPYRIGHT OF CONEC GmbH			dwg no: 43K1A318
					part no: