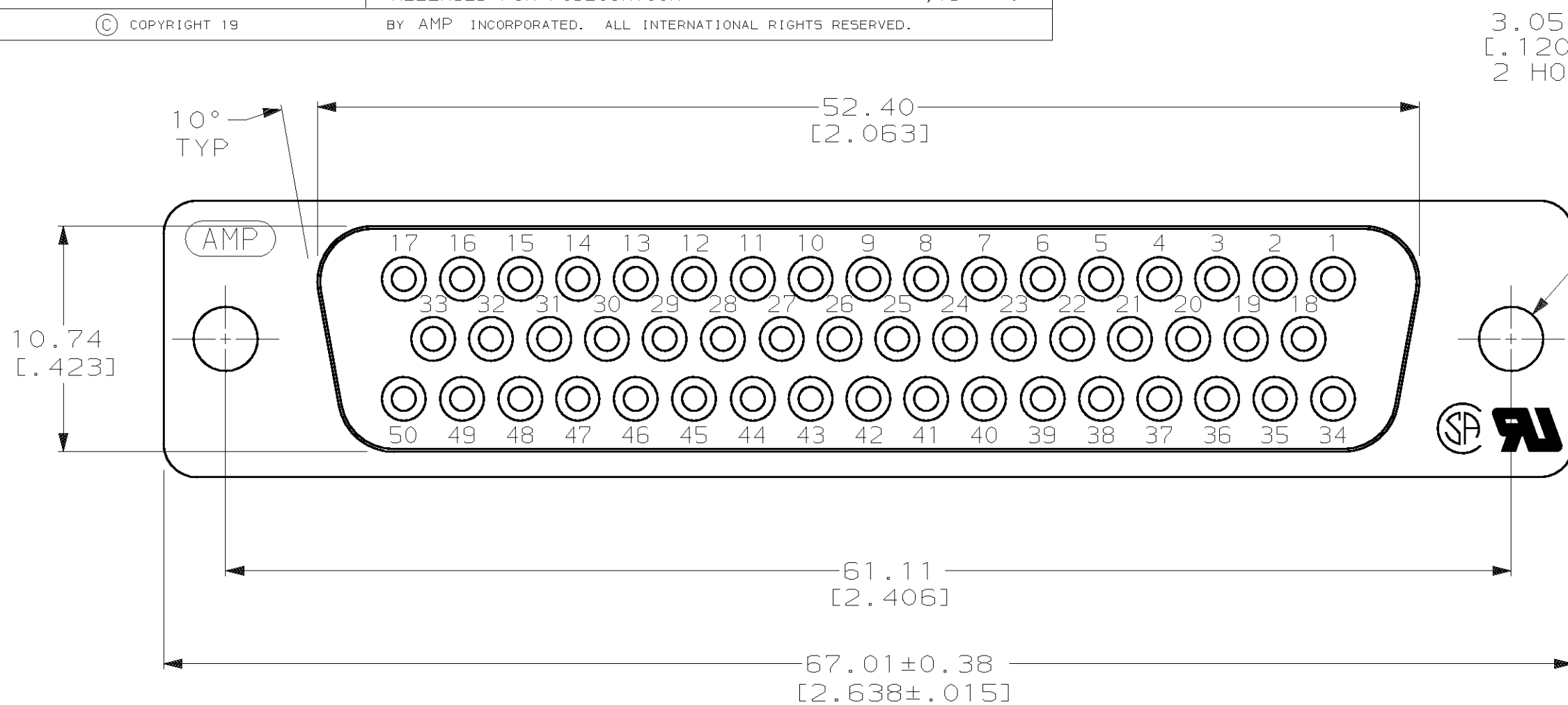
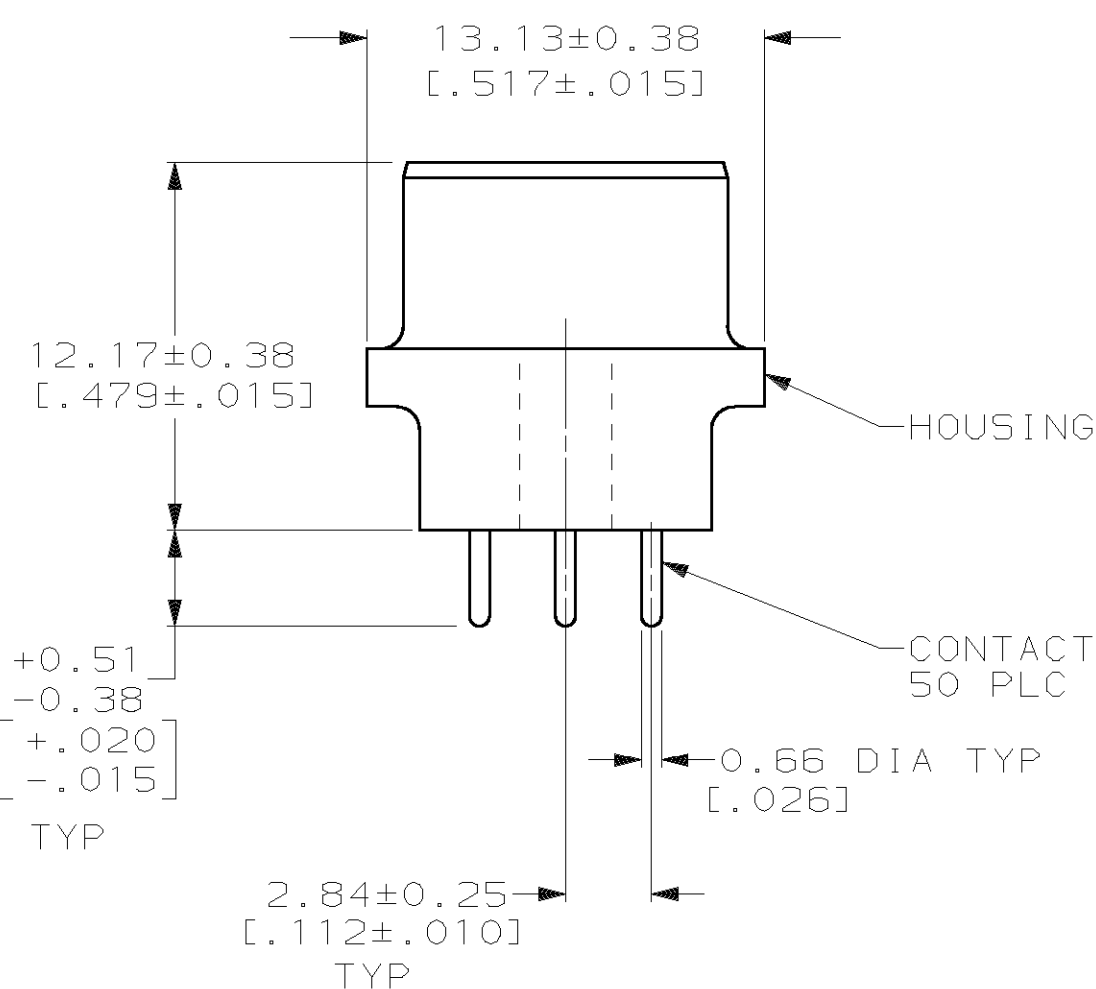
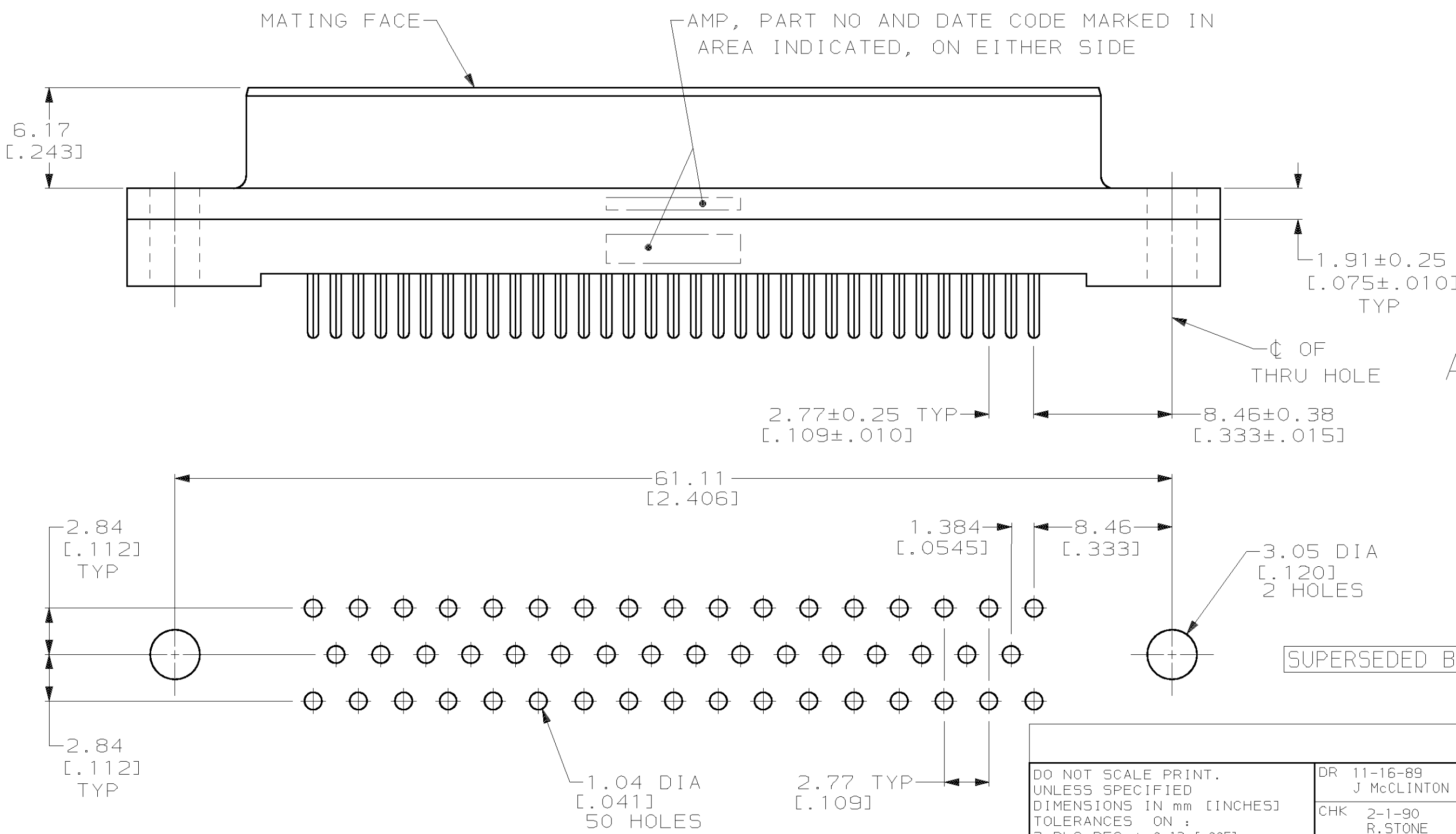


THIS DRAWING IS UNPUBLISHED. RELEASED FOR PUBLICATION  
 © COPYRIGHT 19 BY AMP INCORPORATED. ALL INTERNATIONAL RIGHTS RESERVED.

LOC		DIST		P		F		ZONE		LTR		REVISIONS		DATE	APPD
GP		00								H		REVISIONS			
												DESCRIPTION			
												REVISED PER EC 0513-0017-03	12MAY03	JG	



- ① HOUSING: BLACK POLYESTER, UL 94V-0 RATED; CONTACTS: PHOSPHOR BRONZE PER QQ-B-750.
- ② GOLD PLATING PER MIL-G-45204, TIN PLATING PER MIL-T-10727, NICKEL PLATING PER QQ-N-290.
- ③ GOLD FLASH FOR A LENGTH OF 2.54 [.100] MIN FROM MATING END, 2.54µm [.000100] MIN TIN OR TIN-LEAD FOR A LENGTH OF DIMENSION A FROM OPPOSITE END, ALL OVER 1.27µm [.000050] MIN NICKEL.
- ④ 0.76µm [.000030] MIN GOLD FOR A LENGTH OF 2.54 [.100] MIN FROM MATING END, 2.54µm [.000100] MIN TIN OR TIN-LEAD FOR A LENGTH OF DIMENSION A FROM OPPOSITE END, ALL OVER 1.27µm [.000050] MIN NICKEL.



	A	CONTACT FINISH	PART NO
OBSOLETE	6.35 [.250]	④	207830-8
OBSOLETE	6.35 [.250]	③	207830-7
OBSOLETE	4.32 [.170]	④	207830-6
<b>SUPERSEDED BY</b>	207830-6	③	207830-5
OBSOLETE	3.18 [.125]	④	207830-4
OBSOLETE	3.18 [.125]	③	207830-3

RECOMMENDED PC BOARD MOUNTING DIMENSIONS

DO NOT SCALE PRINT. UNLESS SPECIFIED DIMENSIONS IN mm [INCHES] TOLERANCES ON:  
 2 PLC DEC ± 0.13 [.005]  
 3 PLC DEC ± -  
 ANGLES ± 2°

MATERIAL

FINISH ②

CONTACT: SEE TABLE

DR 11-16-89  
 J McCLINTON

CHK 2-1-90  
 R. STONE

APPD 2-2-90  
 S. SCHIEFERLY

APPD 2-2-90  
 C. RÖHDE

PRODUCT SPEC  
 108-40025

APPLICATION SPEC  
 -

WEIGHT  
 -

**AMP** AMP INCORPORATED  
 Harrisburg, Pa. 17105

NAME  
 RECEPTACLE ASSEMBLY, SIZE 5,  
 50 POSN, VERTICAL,  
 AMPLIMITE® HD-20

SIZE **C** CAGE CODE 00779 DRAWING NO 207830

SCALE 4:1 SHEET 1 OF 1