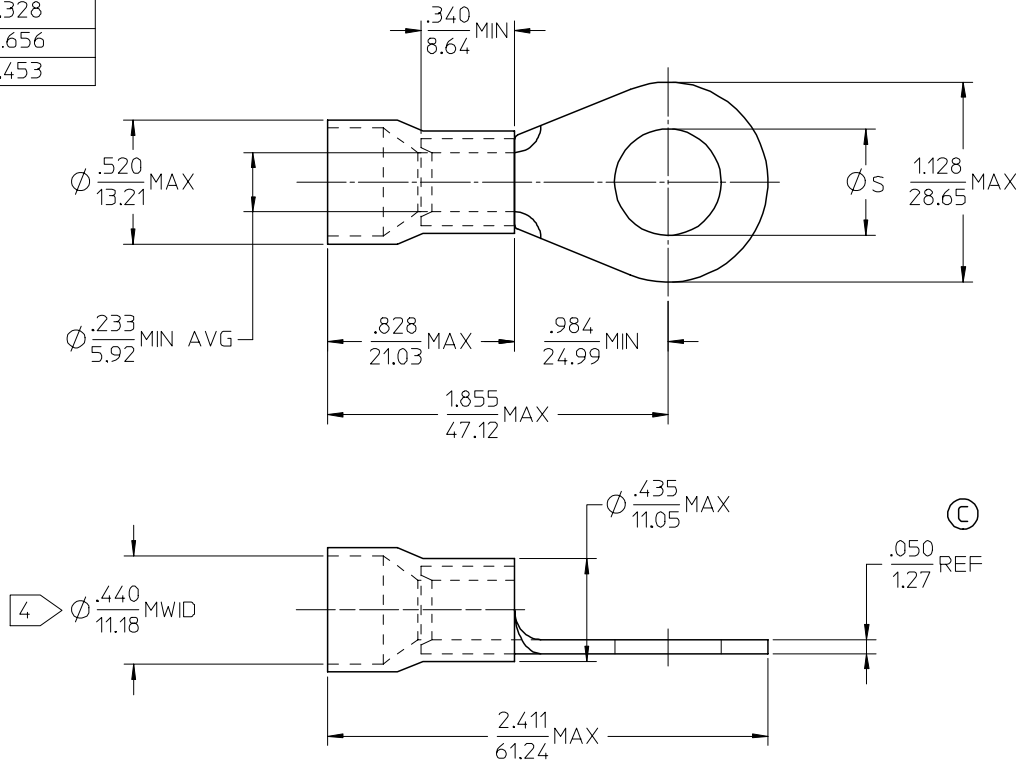


MATERIAL NO.	ENG. NO.	STUD SIZE	Ø S ±.005
190710210	E-659-12X	1/2	.515
190710211	E-659-14X	1/4	.265
190710212	E-659-34X	3/4	.781
190710213	E-659-38X	3/8	.390
190710214	E-659-56X	5/16	.328
190710215	E-659-58X	5/8	.656
190710216	E-659-76X	7/16	.453



NOTE(S):

1. TERMINAL MATERIAL: COPPER ALLOY.
2. TERMINAL FINISH: ELECTRO TIN PLATE.
3. INSULATION MATERIAL: PVC, COLOR CODED BLUE.
4. MWID = MAXIMUM WIRE INSULATION DIAMETER.
5. ALL COMPONENTS ARE ROHS COMPLIANT.

REV	DESCRIPTION	QUALITY SYMBOLS	GENERAL TOLERANCES (UNLESS SPECIFIED)		DIMENSION STYLE		SCALE	DESIGN UNITS	THIRD ANGLE PROJECTION
			mm	INCH	IN/MM	INCH	INCH		
		▽=0	4 PLACES ±	±	DRAWN BY	DATE	4:1	INCH	RING TONGUE TERMINAL INSULKRIMP, 659 SERIES 6 AWG
		▽=0	3 PLACES ±	±	EHILE	2006/10/10			
			2 PLACES ±	±	CHECKED BY	DATE	MOLEX INCORPORATED		
			1 PLACE ±	±	JMACNEIL	2006/10/10			
			ANGULAR ±	°	APPROVED BY	DATE	MATERIAL NO.	DOCUMENT NO.	SHEET NO.
					JMACNEIL	2006/10/10	SEE CHART	SD-19071-014	1 OF 1
			DRAFT WHERE APPLICABLE MUST REMAIN WITHIN DIMENSIONS		SIZE	THIS DRAWING CONTAINS INFORMATION THAT IS PROPRIETARY TO MOLEX INCORPORATED AND SHOULD NOT BE USED WITHOUT WRITTEN PERMISSION			
					B				