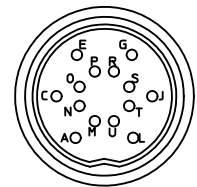
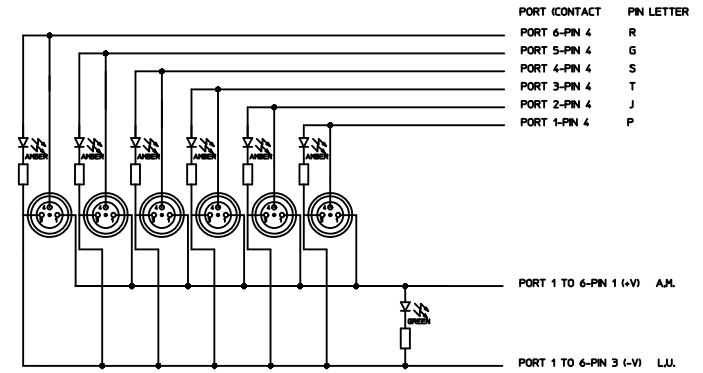
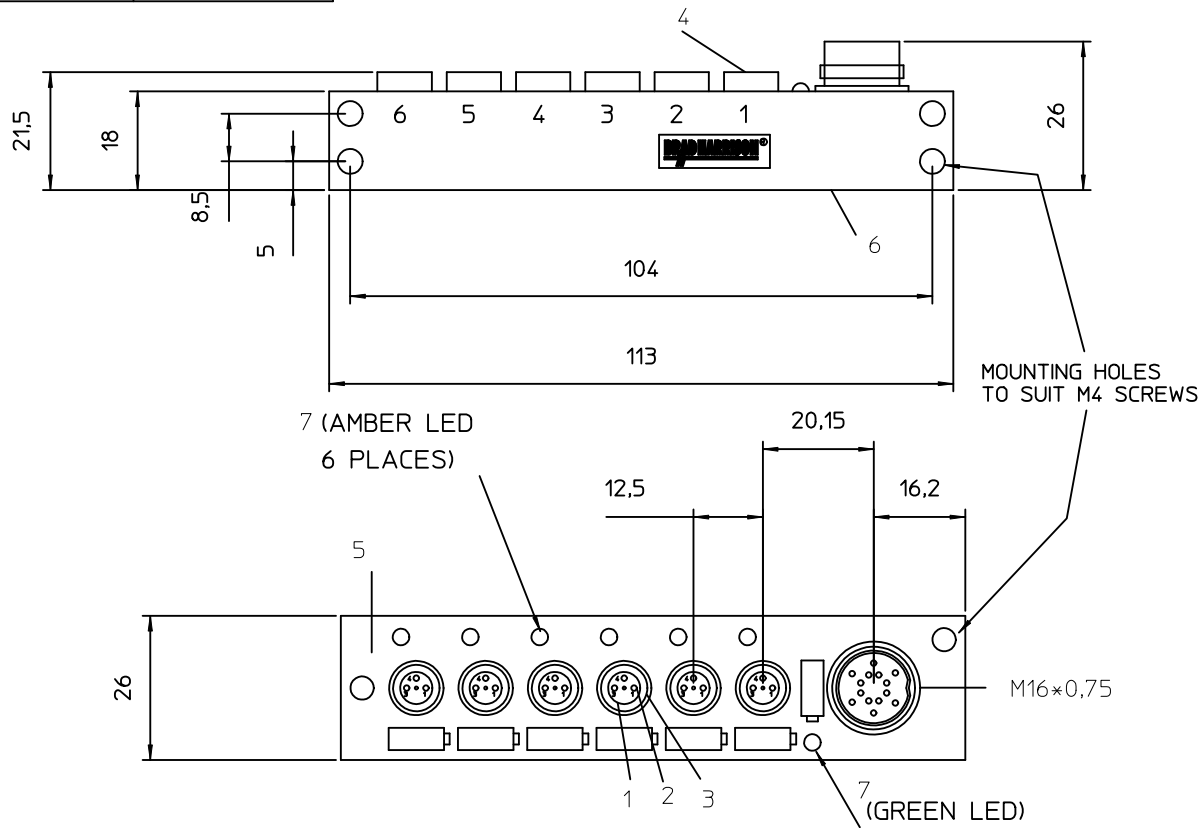


SAP-NUMBER	OLD PART NUMBER
1201130026	BNY601P-FBC



FACE VIEW OF CONNECTOR

CLOSURE CAP

SAP no. 1203080677
Quantity 2

VOLTAGE RATING	10 - 30 VDC
AMPERAGE RATING PER PORT	2 A MAX./PORT 6 A MAX. TOTAL
PROTECTION	IP 67
OPERATING TEMPERATURE	-25°C / +90 °C

SCALE	DESIGN UNITS	THIRD ANGLE PROJECTION
	METRIC	

ITEM	COMPONENT	MATERIAL	FINISH
1	INSERT	PUR	BLACK
2	CONTAC SOCKET	BRASS	GOLD OVER NICKEL
3	O-RING	VITON	---
4	RECEPTACLE SHELL	BRASS	NICKEL PLATED
5	HOUSING	PBT	YELLOW
6	LABEL	ABS	WHITE
7	LENS	PA	CLEAR

NEW RELEASE
EC NO: WEU2010-0248
DRWN:SBH 2010/01/08
CHKD:APOHL WEU 2010/01/08
APPR:NSTAUDIGEL 2010/01/29

QUALITY SYMBOLS	DESCRIPTION
	=0
	=0

GENERAL TOLERANCES (UNLESS SPECIFIED)	mm	INCH
4 PLACES	± ---	± ---
3 PLACES	± ---	± ---
2 PLACES	± ---	± ---
1 PLACE	± 0.3	± ---
ANGULAR ± ---°		

DRAFT WHERE APPLICABLE
MUST REMAIN WITHIN DIMENSIONS

DIMENSION STYLE		MM ONLY	
DRAWN BY	DATE	TITLE	
SBH	2010/01/08	M8-MPIS 6 PORT CABLE 3 POL	
CHECKED BY	DATE		
APOHL WEU	2010/01/08		
APPROVED BY	DATE		
NSTAUDIGEL	2010/01/29		
MATERIAL NO.		DOCUMENT NO.	
SEE TABLE		SD-120113-022	

MOLEX INCORPORATED

SD-120113-022

1 OF 1

THIS DRAWING CONTAINS INFORMATION THAT IS PROPRIETARY TO MOLEX INCORPORATED AND SHOULD NOT BE USED WITHOUT WRITTEN PERMISSION