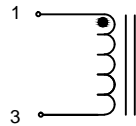


LDZ2817220K-10

PHYSICAL DIMENSIONS:

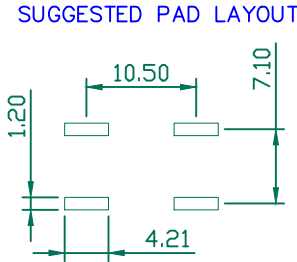
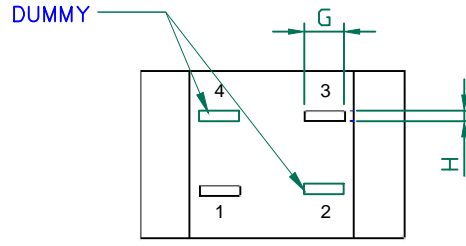
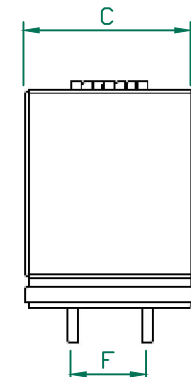
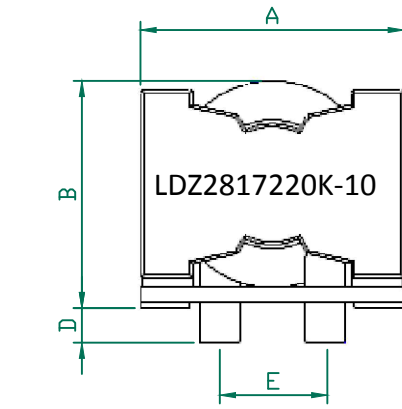
A	27.00	±	0.50
B	23.00		MAX.
C	17.00		MAX.
D	3.50	±	0.30
E	10.50	±	0.50
F	7.10	±	0.50
G	3.81	±	0.30
H	0.80	±	0.15

SCHEMATIC

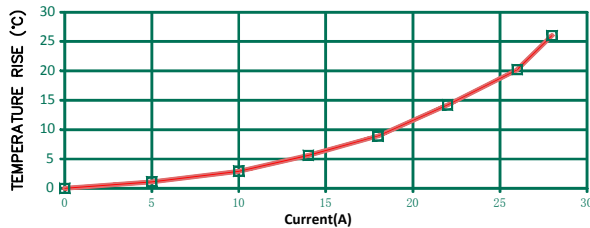


ELECTRICAL SPECIFICATION @ 25°C

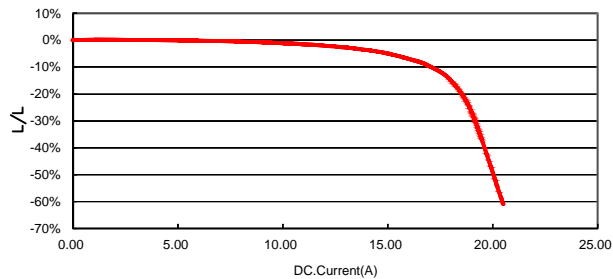
ELECTRICAL CHARACTERISTICS		MIN	NOM	MAX
INDUCTANCE L @ 300 KHz/0.1V ±10%	uH	19.8	22.0	24.2
DCR	Ω	---	0.0026	0.003
I SAT(A)	A	---	---	16.4
I RMS(A)	A	---	---	26



Temp Vs Current



Current vs inductance



NOTES: UNLESS OTHERWISE SPECIFIED

1. OPERATION TEMPERATURE RANGE: -40°C~+125°C(INCLUDING SELF-HEATING).
2. STORAGE TEMPERATURE RANGE: -40°C~+125°C .
3. THE SATURATION CURRENT VALUE (Isat) IS THE DC CURRENT VALUE HAVING INDUCTANCE DORP OFF 30% MAX. (AT 25°C)
4. THE TEMPERATURE RISE CURRENT VALUE (Irms) IS THE DC CURRENT VALUE HAVING TEMPERATURE INCREASE ΔT40°C. (AT 25°C)

DIMENSIONS ARE IN mm (INCHES).		This print is the property of Laird Tech. and is loaned in confidence subject to return upon request and with the understanding that no copies shall be made without the written consent of Laird Tech. All rights to design or invention are reserved.		Laird	
		PROJECT/PART NUMBER:	LDZ2817220K-10	REV: A	PART TYPE: QIU
		DATE:	06/24/16	SCALE: NTS	SHEET: 1 of 1
		CAD #	LDZ2817220K-10-A	TOOL #	-
REV	DESCRIPTION	DATE	INT		
A	ORIGINAL DRAFT	06/24/16	QIU		