

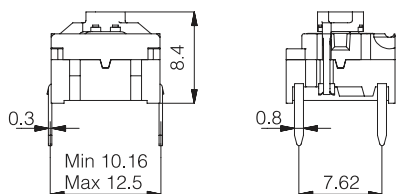
multimec[®] illumec™ 4A

Technical Data

- through-hole or SMD
- 50mA/24VDC
- single pole/momentary
- 10,000,000 operations life time
- IP67 sealing
- temperature range:
high temp. switch: -40/+160°C
LED: -30/+85°C

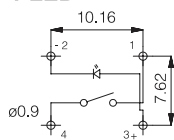


Dimensions (through-hole)

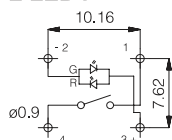


PCB layout and Circuit Diagram

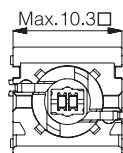
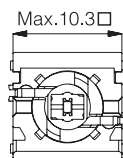
1 LED



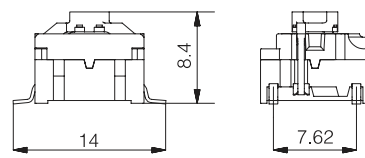
2 LEDs



Top View

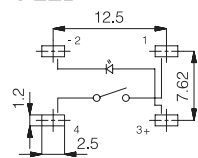


Dimensions (SMD)

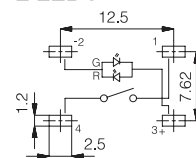


PCB layout and Circuit Diagram

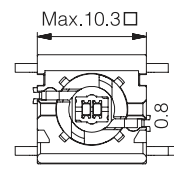
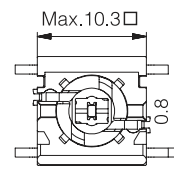
1 LED



2 LEDs



Top View



Technical specifications for 4A switch and LEDs see pages 35 and 36

How to order

4 A

Switch Mounting
SH9 surface mount
TH9 through-hole

+

LED Illuminated Cap
01 1A 10,12,14,16,18
22 1B 10,12,14,16,18
42
61
82
2242
8222
8242

Cap Solid Illuminated Colour Lens

1H Solid Colour + lens 1,2,4,6,8

1C Solid Colour + lens 1,2,4,6,8 +

2 C or **2 D**
Bezel Solid Colour Bezel Solid Illuminated Colour Lens

2 C or **2 D**
Bezel Solid Colour Bezel Solid Illuminated Colour Lens

Colour codes

LEDs
01 blue
22 green
42 yellow
61 white
82 red
2242 green/yellow
8222 red/green
8242 red/yellow

Illuminated Caps
10 frosted blue
12 frosted green
14 frosted yellow
16 frosted white
18 frosted red

Lenses
1 transparent
2 green
4 yellow
6 frosted white
8 red

Solid Colours Caps and Bezels

For 1A, 1B and 2C only:
00 blue
02 green
03 grey
04 yellow
06 white
08 red
09 black
30 ultra blue
40 dusty blue
42 aqua blue
32 mint green
33 tele grey
08 red
38 noble red
50 metal dark blue
53 metal light grey
57 metal dark grey
58 metal bordeaux

Dimensions

Caps See Page
1A - 1H 11
1B - 1C 10
2C - 2D
Same as for 2A/B 10

Ordering example: 4ASH982 + 1A18 or 4ATH901 + 1B10 + 2C09

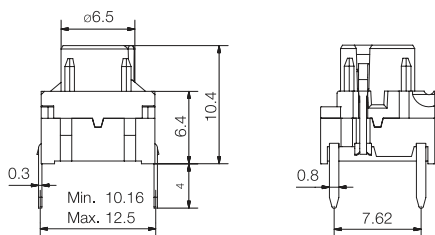
For updates of products and/or changes of specifications please see www.mec.dk

Technical Data

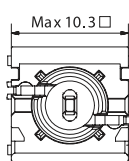
- through-hole or SMD
- 50mA/24VDC
- single pole/momentary
- 10,000,000 operations life time
- IP67 sealing
- temperature range:
 - high temp. switch; -40/+160°C
 - LED: -30/+85°C



Dimensions (through-hole)

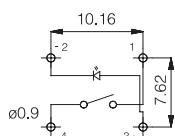


Top View

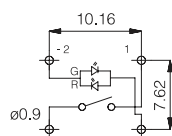


PCB layout and Circuit Diagram

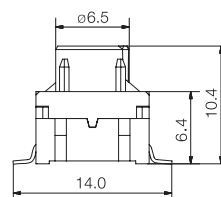
1 LED



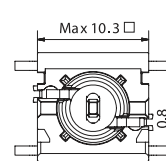
2 LEDs



Dimensions (SMD)

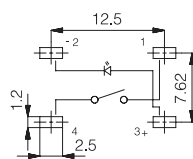


Top View

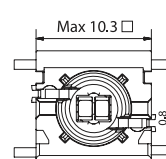
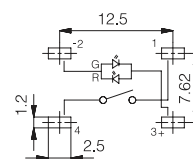


PCB layout and Circuit Diagram

1 LED



2 LEDs



Technical specifications for 4F switch and LEDs see pages 35 and 36

How to order

4 F



Switch

Mounting

SH9 surface mount
TH9 through-hole

LED

01

22

42

61

82

2242

8222

8242

Illuminated
Cap



1D

1K, 1KB, 1KC

1N

1S

1T

1U

1V

1WA, 1WD, 1WP

1X

Colour code

11, 16

11, 16

10, 12, 14, 16, 18

11

16

16

16

16

11



Cap

Solid

Illuminated

Colour

Colour

Lens

1E Solid Colour + lens 1,2,4,6,8

1F Solid Colour + lens 1,2,4,6,8

1Q Solid Colour + lens 1,6

1R Solid Colour + lens 1,6

Colour codes

LEDs

01 blue

22 green

42 yellow

61 white

82 red

2242 green/yellow

8222 red/green

8242 red/yellow

Illuminated Caps

10 frosted blue

11 transparent

12 frosted green

14 frosted yellow

16 frosted white

18 frosted red

Lenses

1 transparent

2 green

4 yellow

6 frosted white

8 red

Solid Colours

1E, 1F

00 blue

02 green

03 grey

04 yellow

06 white

08 red

09 black

1Q, 1R

00 blue

03 grey

08 red

09 black

Dimensions

Caps

1D, 1E, 1F

1K, 1KB, 1KC

1N

1Q, 1R

1S

1T, 1U, 1V

1WA, 1WD, 1WP

1X

See Page

15

16

14

18

21

19

17

20

Ordering example: 4FSH98242 + 1D11 or 4FTH922 + 1T16

For updates of products and/or changes of specifications please see www.mec.dk