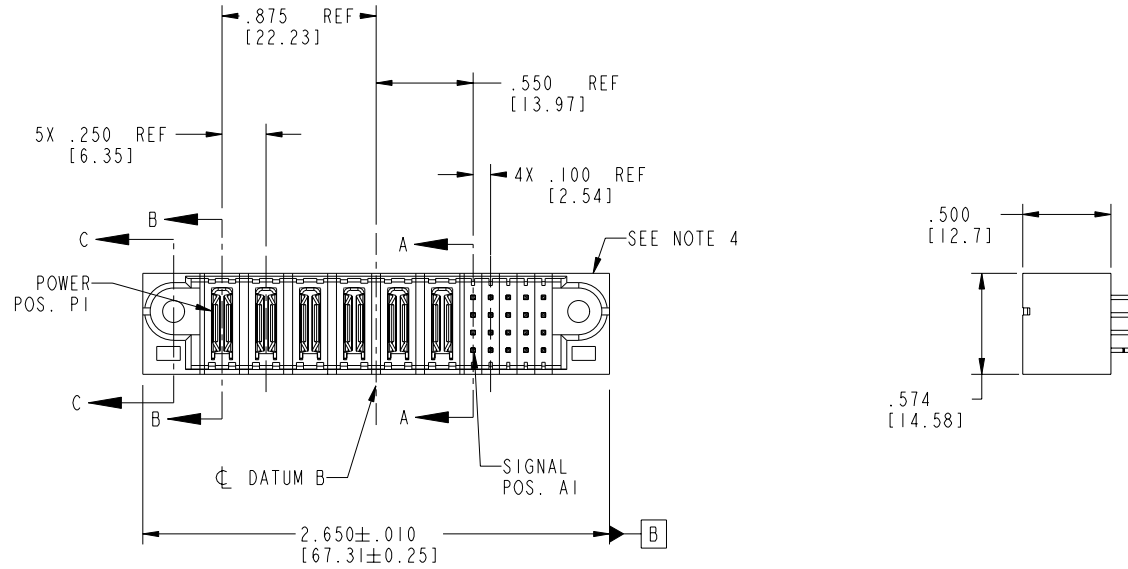


Tous droits strictement réservés. Reproduction ou communication à des tiers interdite sous quelque forme que ce soit sans autorisation écrite du propriétaire. Propriété de c FCI. Droits de reproduction FCI.

All rights strictly reserved. Reproduction or issue to third parties in any form whatever is not permitted without written authority from the proprietor. Property of FCI. Copyright FCI.

PRODUCT NO.	ROWS	POWER						SIGNAL						
		E1	P1	P2	P3	P4	P5	P6	1	2	3	4	5	E2
51712-009-- NOTE ③	D C B A													



CODE	DIM "M" MATING LENGTH	CONTACT TYPE
PA	N/A [N/A]	POWER
H	.220 [5.59]	SIGNAL
E	.270 [6.86]	SIGNAL
HA	N/A [N/A]	HOLD-DOWN

mat'l code SEE NOTE 2				tolerances unless otherwise specified		CUSTOMER		 www.fciconnect.com	
ltr	ecn no.	dr	date	linear	projection	COPY		title	
A	DG05-0544	CS	12/13/05	.XX±.01/0.X±0.3				6P + 20S	
				.XXX±.005/0.XX±0.13				VERTICAL STB HEADER	
				.XXX±.0020/0.XX±0.051				product family	
				angles	$0^{\circ} \pm 2^{\circ}$	INCH/MM		PwrBlade	
				dr	CS	12/13/05		code	
				enr	STEVEN WANG	12/13/05		213	
				chr	VICTOR LIN	12/13/05		sheet	
				appd	JOSEPH HSIA	12/13/05		1 of 4	
sheet index	revision sheet	A	A	A	A				
		1	2	3	4				

cage code 22526 4

PDM: Rev:A

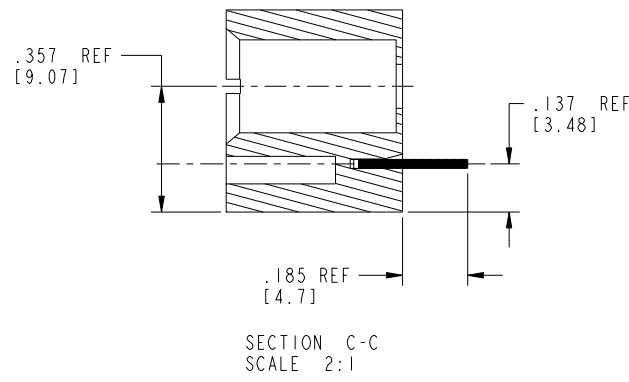
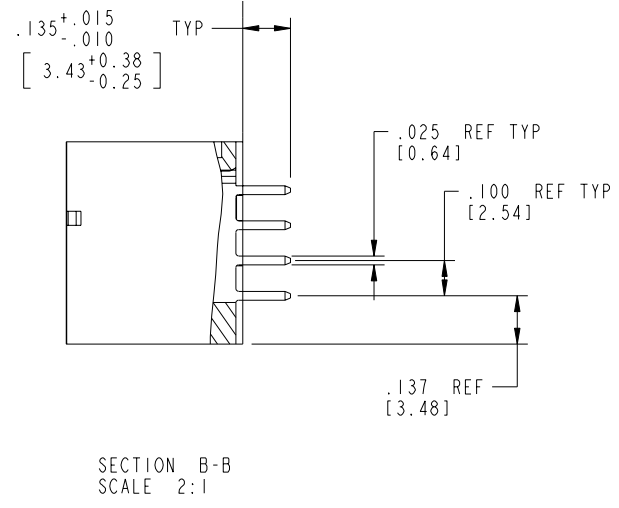
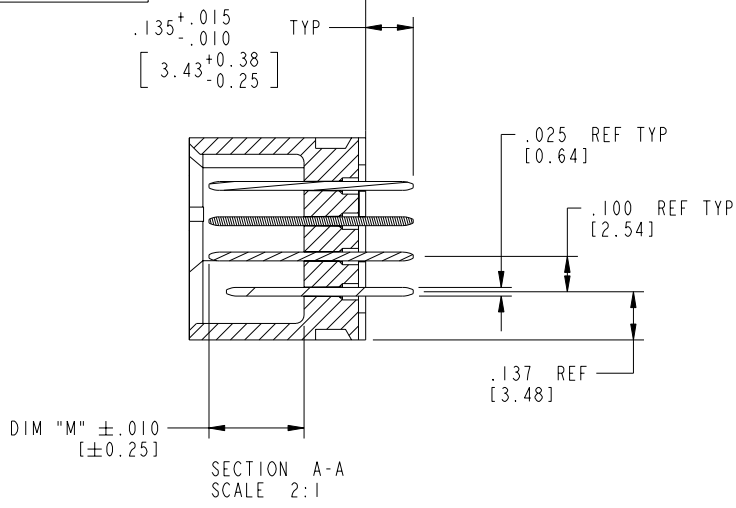
STATUS: Released

Printed: Sep 20, 2006

Tous droits strictement réservés. Reproduction ou communication a des tiers interdite sous quelque forme que ce soit sans autorisation écrite du propriétaire. Propriété de c FCI. Droits de reproduction FCI.

All rights strictly reserved. Reproduction or issue to third parties in any form whatever is not permitted without written authority from the proprietor. Property of FCI. Copyright FCI.

PRODUCT NUMBER  
51712-009--  
NOTE ③



mat'l code		SEE NOTE 2		tolerances unless otherwise specified		CUSTOMER		 www.fciconnect.com	
ltr	ecn no.	dr	date	linear	.XX±.01/0.X±0.3	COPY		title	
A				projection	.XXX±.005/0.XX±0.13			6P + 20S VERTICAL STB HEADER	
				angles	.XXXX±.0020/0.XXX±0.051	INCH/MM		product family	
				dr	0° ± 2°	scale		PwrBlade	
				enr	CS 12/13/05	1:1		code	
				chr	STEVEN WANG 12/13/05			213	
				appd	VICTOR LIN 12/13/05			sheet	
					JOSEPH HSIA 12/13/05			2 of 4	
sheet index	revision sheet								

cage code 22526 4



Tous droits strictement réservés. Reproduction ou communication à des tiers interdite sous quelque forme que ce soit sans autorisation écrite du propriétaire. Propriété de c FCI. Droits de reproduction FCI.

**A**  
**FCI**

All rights strictly reserved. Reproduction or issue to third parties in any form whatever is not permitted without written authority from the proprietor. Property of FCI. Copyright FCI.

**B**

1 | 2

3 |

4

PRODUCT NUMBER  
51712-009--  
NOTE(3)

NOTES:

1. DIMENSIONS AND TOLERANCES ARE IN ACCORDANCE WITH ASME Y14.5M, 1994 UNLESS OTHERWISE SPECIFIED.

CONNECTOR NOTES:

(2) HOUSING MATERIAL: UL 94 V-0 GLASS FILLED

HIGH-TEMP THERMOPLASTIC  
POWER CONTACT MATERIAL: COPPER ALLOY  
SIGNAL PIN MATERIAL: COPPER ALLOY

3. PLATING:

51712-009 Singal Pin:30u"/0.76um Au OVER 50u"/1.27um Ni ON THE CONTACT AREA.  
AND 100u"/2.54um SnPb PLATING OVER 50u"/1.27um Ni ON THE TERMINATION SECTION.  
Power Pin:30u"/0.76um Au OVER 50u"/1.27um Ni ON THE CONTACT AREA,  
AND 100u"/2.54um SnPb PLATING OVER 50u"/1.27um Ni ON THE TERMINATION SECTION.

51712-009LF Singal Pin:30u"/0.76um Au OVER 50u"/1.27um Ni ON THE CONTACT AREA.  
AND 78u"/2.00um Sn PLATING OVER 50u"/1.27um Ni ON THE TERMINATION SECTION.  
Power Pin:30u"/0.76um Au OVER 50u"/1.27um Ni ON THE CONTACT AREA,  
AND 78u"/2.00um Sn PLATING OVER 50u"/1.27um Ni ON THE TERMINATION SECTION.

PART NUMBER 51712-009LF MEETS EUROPEAN UNION DIRECTIVE AND OTHER COUNTRY REGULATIONS AS DESCRIBED IN GS-22-008.

THE HOUSING WILL WITHSTAND EXPOSURE TO 260° PEAK TEMPERATURE FOR 10 SECONDS IN A WAVE SOLDER APPLICATION WITH A CIRCUIT BOARD.

(4) MANUFACTURER'S NAME, P/N, AND DATE CODE TO APPEAR ON THIS SURFACE.

5. PRODUCT SPECIFICATION GS-12-149.  
APPLICATION SPECIFICATION BUS-20-067.

6. PACKAGED IN TRAYS.

PCB NOTES:

7. ALL HOLE DIAMETERS ARE FINISHED HOLE SIZE.

8. MOUNTING HOLES, WHERE APPLICABLE, ARE UNPLATED.

(9)  $\varnothing .0453 \pm .0010$  [1.151 $\pm$ 0.025] DRILLED HOLES PLATED WITH .0003 [0.008] MIN SnPb OVER .001 [0.03] TO .003 [0.08] Cu PLATING TO ACHIEVE  $\varnothing .040 \pm .003$  [1.02 $\pm$ .07] HOLE.

(10) "DIM XXX" TO BE DETERMINED BY THE CUSTOMER.

(11) CONNECTOR KEEP-OUT ZONE.

mat'l code				SEE NOTE 2		tolerances unless otherwise specified		CUSTOMER		<b>A</b> <b>FCI</b>		www.fciconnect.com	
ltr	ecn no.	dr	date	linear	.XX+ .01/0.X+0.3	COPY		projection		title		6P + 20S	
A					.XXX+ .005/0.XX+0.13					VERTICAL STB HEADER			
				angles	.XXXX+ .0020/0.XXX+0.051					product family		PwrBlade	
				dr	0° ± 2°			INCH/MM		size		213	
				enrg	CS	12/13/05		scale		dwg no		sheet	
				chr	STEVEN WANG	12/13/05		1:1		51712-009		4 of 4	
				appd	VICTOR LIN	12/13/05							
sheet index	revision sheet				JOSEPH HSIA	12/13/05							

cage code 22526 4

1 | 2

Pro/E

3 |

**PDM: Rev:A**

**STATUS: Released**

Printed: Sep 20, 2006