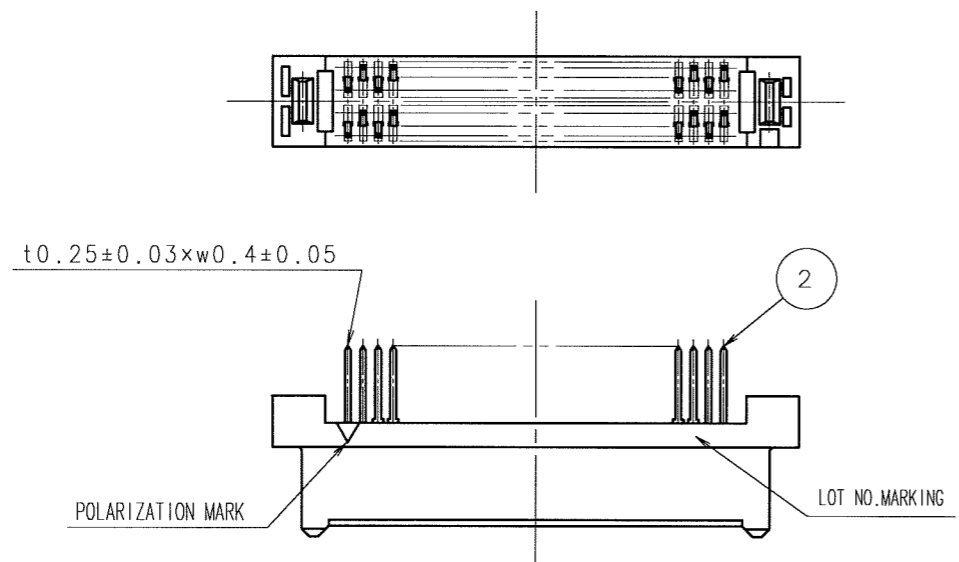
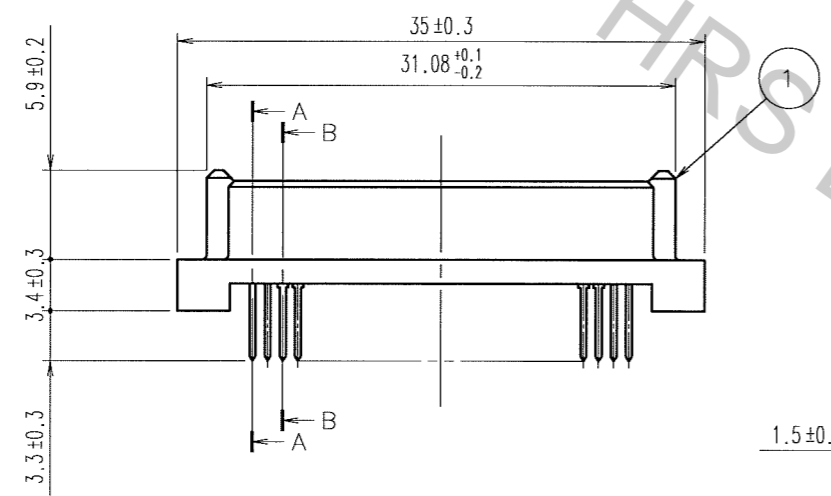
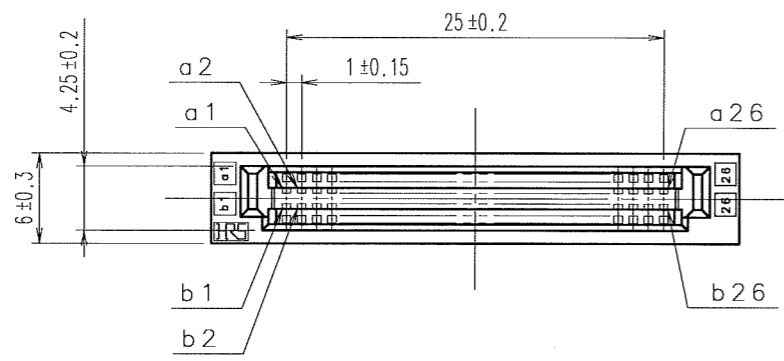


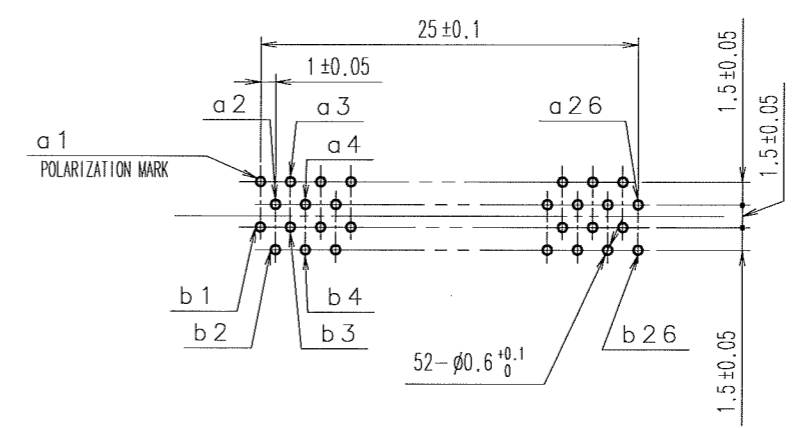
Apr.1.2017 Copyright 2017 HIROSE ELECTRIC CO., LTD. All Rights Reserved.

COUNT	DESCRIPTION OF REVISIONS	BY	CHKD	DATE	COUNT	DESCRIPTION OF REVISIONS	BY	CHKD	DATE
△				..	△				..
△				..	△				..
△				..	△				..



RECOMMENDED PC BOARD HOLE PATTERN (MOUNTING SIDE)

APPLICABLE BOARD THICKNESS, 1.6

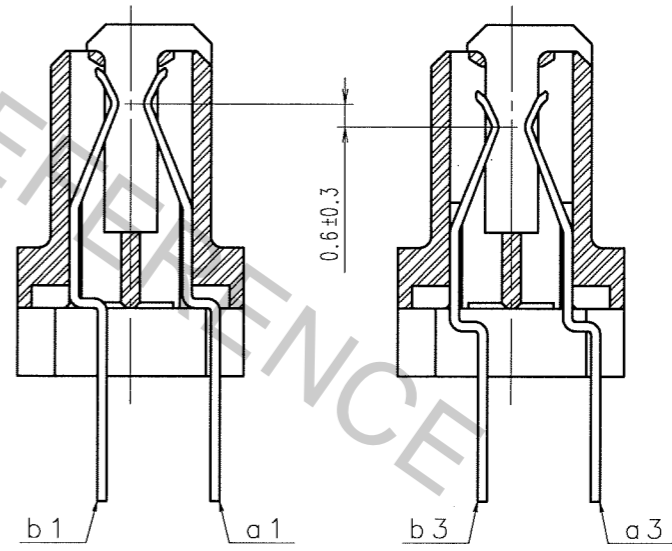


CONTACT SEQUENCE

SEQUENCE	PIN NO.
1	a1, a2, a25, a26 b1, b2, b25, b26
2	a3~a24 b3~b24

A-A (5:1)

B-B (5:1)



1	POLYAMIDE	BEIGE UL94V-0	2	PHOSPHOR BRONZE	CONTACT AREA : GOLD 0.1μm min. LEAD AREA : TIN-PLATING 1.2μm min. UNDER PLATING : NICKEL 1μm min.
NO.	MATERIAL	FINISH, REMARKS	NO.	MATERIAL	FINISH, REMARKS

CODE NO. (OLD)	CL	DRAWN	DESIGNED	CHECKED	APPROVED	RELEASED
		A. SUZUKAWA '06.06.27	H. Nakamura '06.06.27	M. Ozawa '06.06.27	H. Okawa '06.06.27	..

SCALE	2 : 1	DRAWING NO.	EDC3-151415-21	PART NO.	FX5-52S2A-DSA(71)
UNITS	mm	HRS	HIROSE ELECTRIC CO., LTD	CODE NO.	CL575-0106-5-71

TO