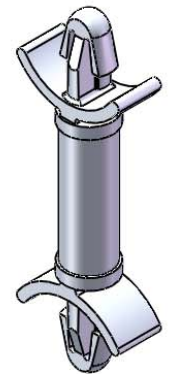


TO SNAP-LOCK IN A .125±.002
[3.18±0.05] DIA. HOLE, IN A
.031-.078 [0.79-1.98] PANEL THICKNESS
(BOTH ENDS)

MATERIAL: NYLON 6/6 UL 94 V-2 (RMS-01) COLOR: NATURAL PART NO.	DIM. "A"±.015 [0.4]
DLCBSM-3-01	3/16 [4.8]
DLCBSM-4-01	1/4 [6.4]
DLCBSM-5-01	5/16 [7.9]
DLCBSM-6-01	3/8 [9.5]
DLCBSM-7-01	7/16 [11.1]
DLCBSM-8-01	1/2 [12.7]
DLCBSM-9-01	9/16 [14.3]
DLCBSM-10-01	5/8 [15.9]



NOTES:

- MATERIAL: NYLON 6/6 UL 94 V-0 (RMS-19)
COLOR: NATURAL.
AVAILABLE BY SPECIAL ORDER ONLY.
- ALTERNATE UNITS FOR REFERENCE ONLY.

D			REDRAWN, SEE ECN #1208 FOR CHANGES			SK			11/29/06			TITLE: DUAL LOCKING CIRCUIT BOARD SUPPORT, MINI			DWG IN IN [MM]			FINAL			QR								
-			SEE ENGINEERING FOR REVISIONS A-C			---			-----			TOLERANCES UNLESS NOTED .XX=±.010 .XXX=±.005 FRAC.=±1/64 ANG.=±1°			FILE #: DLCBSM			DWN: SK			APP: RT			PART #			PRINT TYPE		
REV.			DESCRIPTION			ENGR.			DATE			SHEET: 1 OF 1			SHEET SIZE: A			DT: 11/29/06			CHKD: SJ			SEE TABLE			CA		
												RE: RICHCO, INC.			RICHCO, INC. ENG@RICHCO-INC.COM (773) 539-4060														