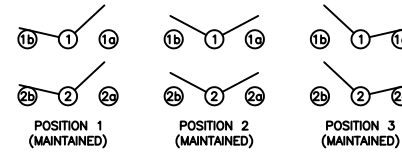


SCHEMATIC



SPECIFICATIONS

FUNCTION:
2P2T ON-OFF-ON

RATINGS:
ANSI/UL 1054 and CAN/CSA C22.2 No. 55 (E194579):
10A 125VAC [UR, cUR]
EN 61058-1:2002:
6A 250V~ μ 1E4 T85 [ENEC14]

CONTACT RESISTANCE:
Initial: 35mΩ Max. at 50VAC

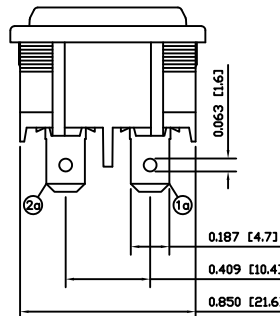
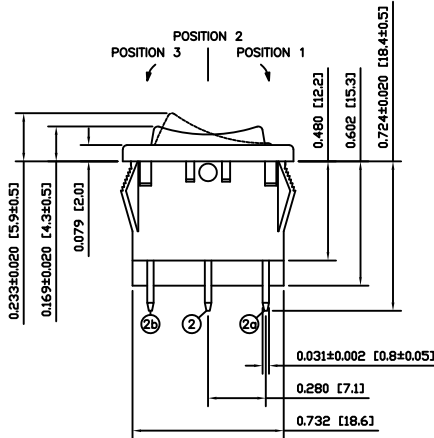
INSULATION RESISTANCE:
100MΩ Min. at 500VDC

DIELECTRIC STRENGTH:
1,500VAC For 1 Minute

ELECTRICAL LIFE:
6,000 Cycles [UR, cUR]
10,000 Cycles [ENEC14]

TEMPERATURE:
Operating: -20°C to 105°C [UR, cUR]
Operating: -20°C to 85°C [ENEC14]

APPROVALS:



COLORS AND MARKINGS

BODY:
Black

ACTUATOR:
Black

MARKINGS:
None

MARKING COLOR:
None

MATERIALS

BODY:
Polyamide 6/6 (PA66), UL94 V-2

ACTUATOR:
Polyamide 6/6 (PA66), UL94 V-2

SPRING:
Steel

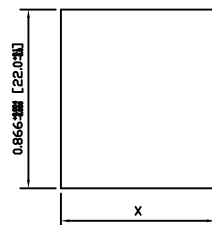
BALL:
Steel

MOBILE CONTACT:
Silver Alloy

CONTACTS:
Silver Alloy

TERMINALS:
Silver Plated Copper

SUGGESTED PANEL CUTOUT



| PANEL THICKNESS | | X |
|-----------------|-------------|--------------|
| 0.030~0.049 | [0.75~1.25] | 0.756 [19.2] |
| 0.049~0.079 | [1.25~2.00] | 0.764 [19.4] |
| 0.079~0.118 | [2.00~3.00] | 0.772 [19.6] |

| | | | |
|----------------|------|----------|-----|
| ACTUATOR | A | 09/09/17 | CAB |
| BODY | A | 09/09/17 | CAB |
| COLORS | A | 09/09/17 | CAB |
| MATERIALS | A | 09/09/17 | CAB |
| SPECIFICATIONS | A | 09/09/17 | CAB |
| REFERENCE | REV. | DATE | BY |

THE INFORMATION CONTAINED IN THIS DOCUMENT IS PROPRIETARY TO E-SWITCH-LAMB INDUSTRIES AND IS NOT TO BE COPIED OR TRANSFERRED

| | | | | |
|------|----------------------|-------|----------|----------|
| B | REMOVED SEMKO RATING | 23429 | 06/29/18 | MJR |
| A | INITIAL RELEASE | 18841 | 10/02/04 | CAB |
| REV. | DESCRIPTION | PCR | DATE | DRAWN BY |

| | |
|----------------------|------------|
| DIMENSIONS | |
| INCHES [MILLIMETERS] | |
| GENERAL TOLERANCES | |
| ±0.008 [±0.2] / ±1' | |
| SCALE | PROJECTION |
| DRAWING NOT TO SCALE | 1:1 |

| | | | |
|-------------------|------------------|----------|--|
| | | | |
| <p>RA41631100</p> | | | |
| ITEM NUMBER | DATE | REVISION | |
| 38-RA41631100 | FEBRUARY 4, 2010 | B | |