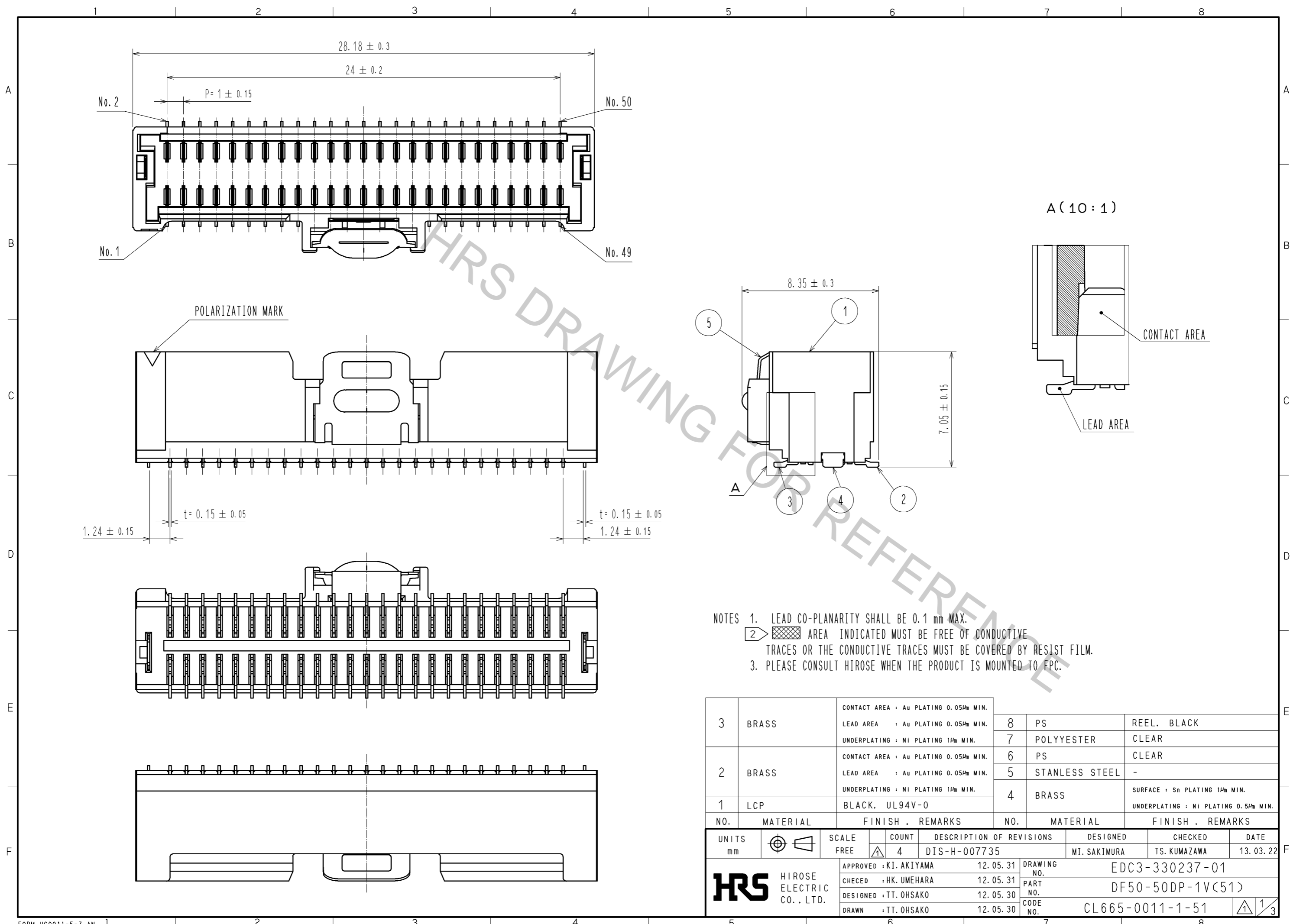


Apr.1.2017 Copyright 2017 HIROSE ELECTRIC CO., LTD. All Rights Reserved.



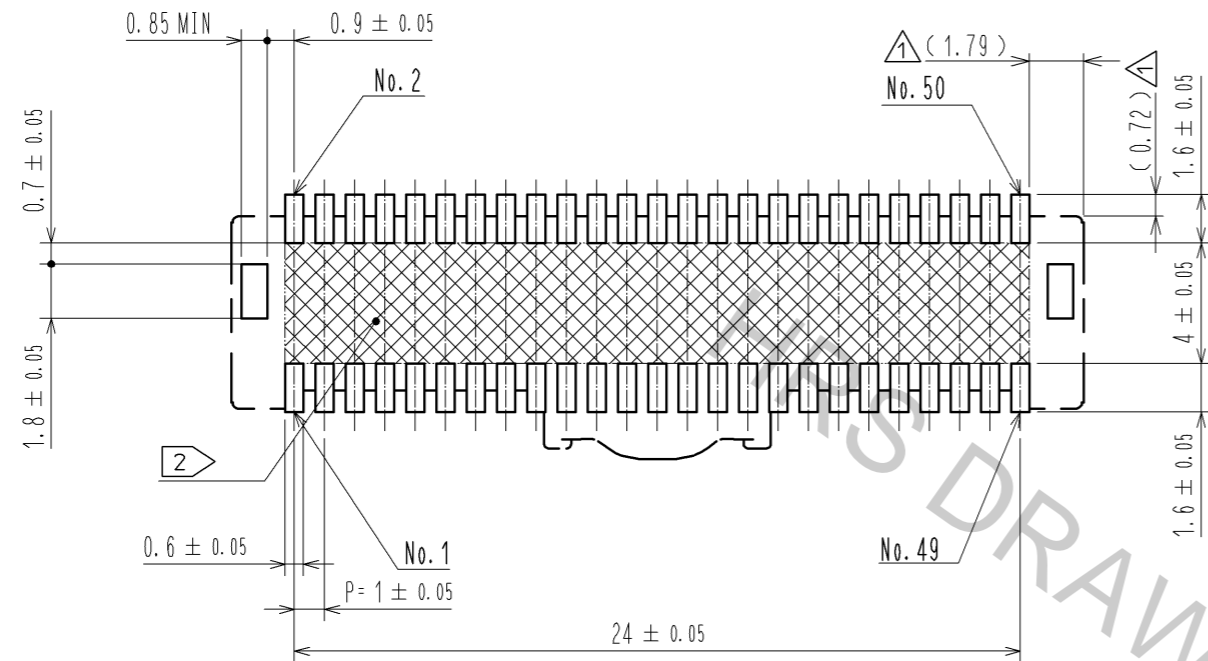
NOTES

- LEAD CO-PLANARITY SHALL BE 0.1 mm MAX.
- AREA INDICATED MUST BE FREE OF CONDUCTIVE TRACES OR THE CONDUCTIVE TRACES MUST BE COVERED BY RESIST FILM.
- PLEASE CONSULT HIROSE WHEN THE PRODUCT IS MOUNTED TO EPC.

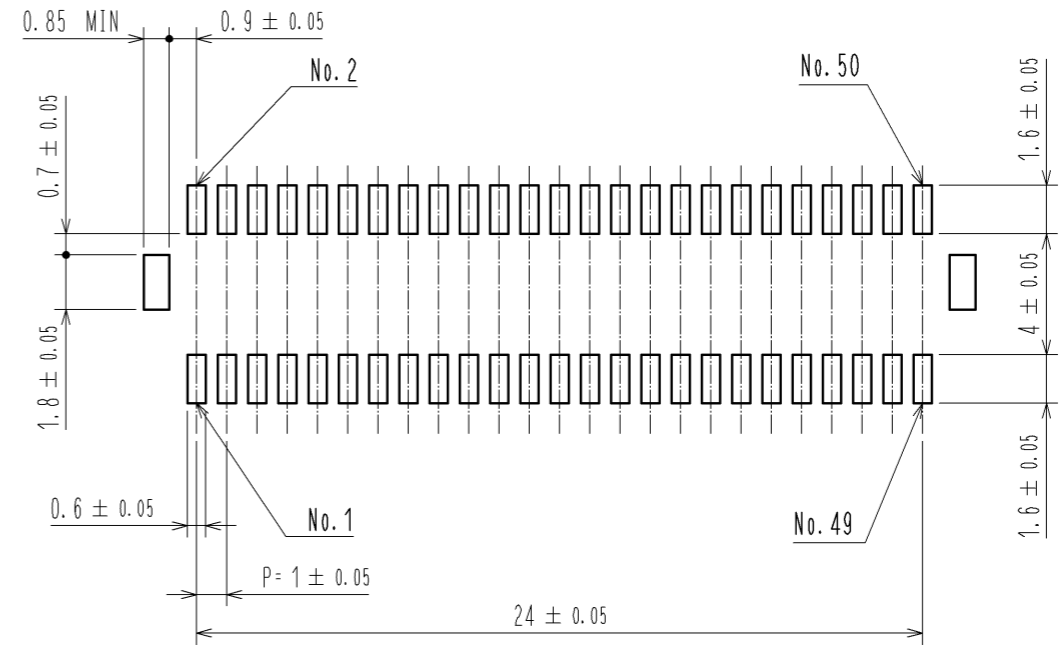
UNITS	SCALE	COUNT	DESCRIPTION OF REVISIONS	DESIGNED	CHECKED	DATE
mm	FREE	4	DIS-H-007735	MI. SAKIMURA	TS. KUMAZAWA	13. 03. 22
APPROVED : KI. AKIYAMA		12. 05. 31	DRAWING NO. EDC3-330237-01			
CHECKED : HK. UMEHARA		12. 05. 31	PART NO. DF50-50DP-1V(51)			
DESIGNED : TT. OHSAKO		12. 05. 30	CODE NO. CL665-0011-1-51			
DRAWN : TT. OHSAKO		12. 05. 30	1/3			

Apr.1.2017 Copyright 2017 HIROSE ELECTRIC CO., LTD. All Rights Reserved.

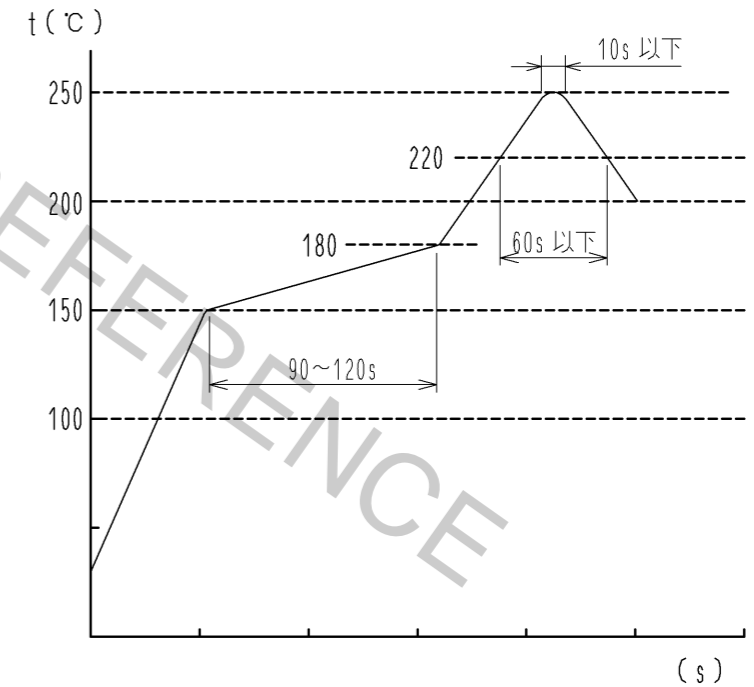
RECOMMENDED PCB LAYOUT
(MOUNTING SURFACE SIDE) (FREE)



RECOMMENDED METAL MASK (FREE)
THICKNESS : 0.1mm



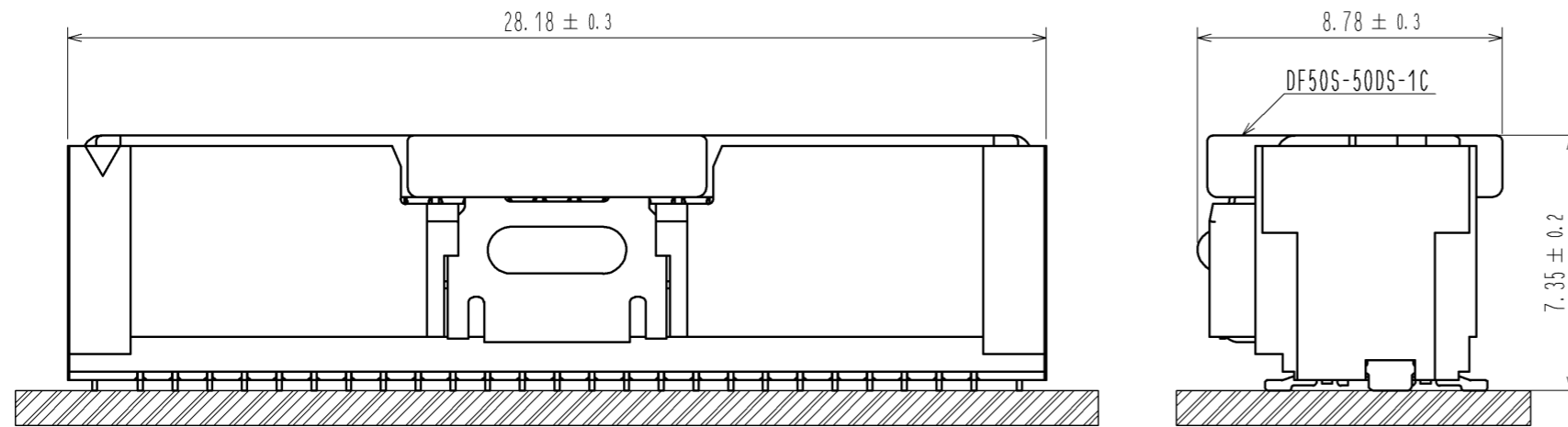
REFLOW TEMPERATURE PROFILE
USING LEAD-FREE SOLDER PASTE(REFERENCE)



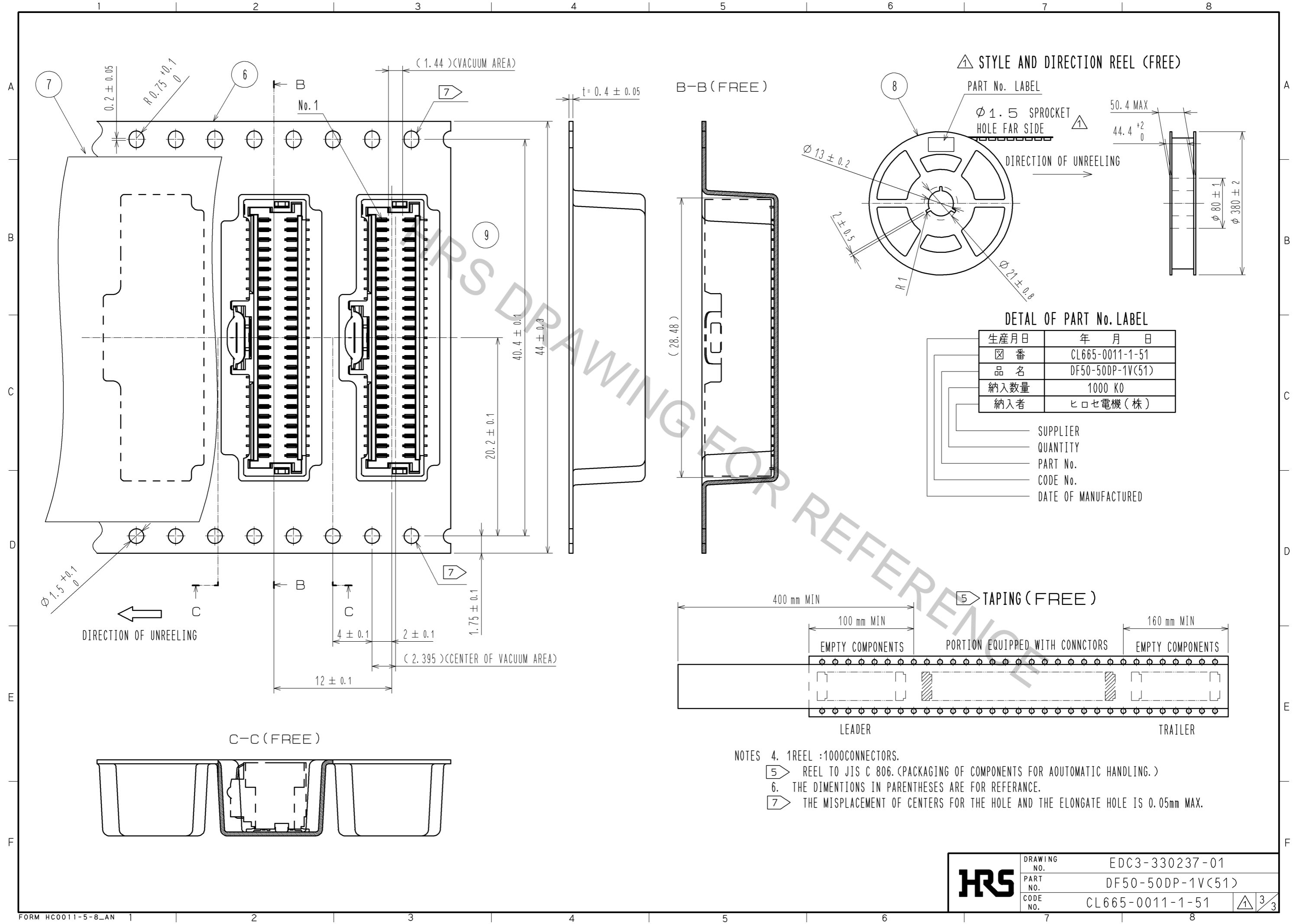
NUMBER OF REFLOW CYCLES : 2 CYCLES MAX.
THE TEMPERATURE OF THIS PROFILE IS MASURED ON THE LEAD TERMINAL.

WE RECOMMEND PERFORMING AN EVALUATION UNDER THE MOUNTING
CONDITIONS YOU WILL BE USING BECAUSE IT COULD BE AFFECTED
BY ANY CONDITION:TYPE OF SOLDER PASTE, SIZE OF PCB, MOUNTING
METAL etc.

MATING FIGURE (5 : 1)



HRS	DRAWING NO.	EDC3-330237-01
	PART NO.	DF50-50DP-1V(51)
	CODE NO.	CL665-0011-1-51
		2/3



HRS	DRAWING NO.	EDC3-330237-01
	PART NO.	DF50-50DP-1V(51)
	CODE NO.	CL665-0011-1-51
		\triangle 3/3