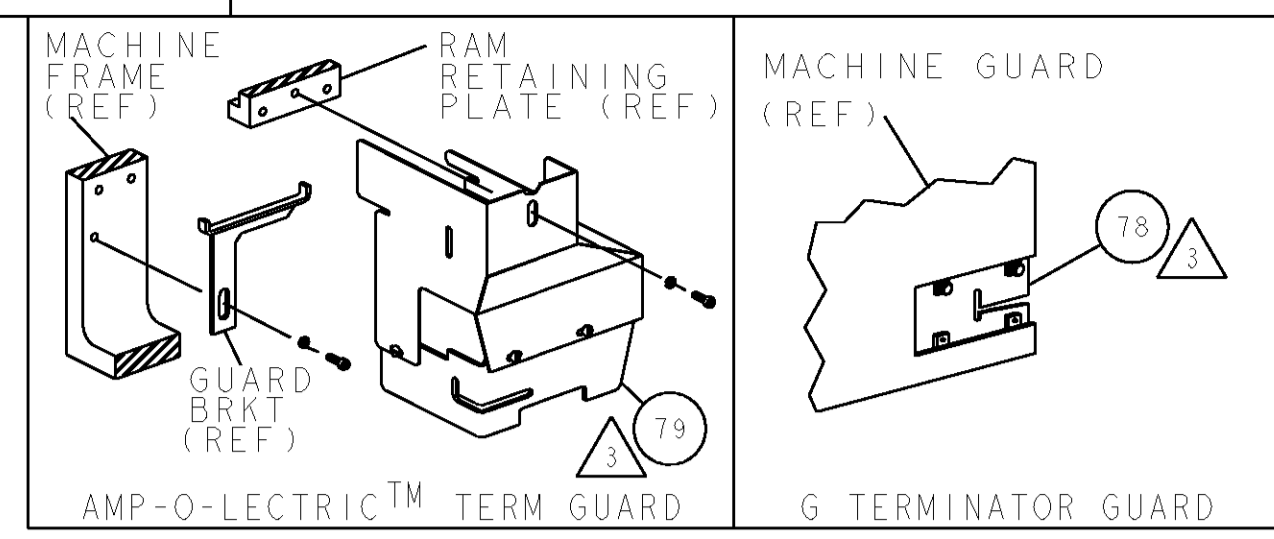


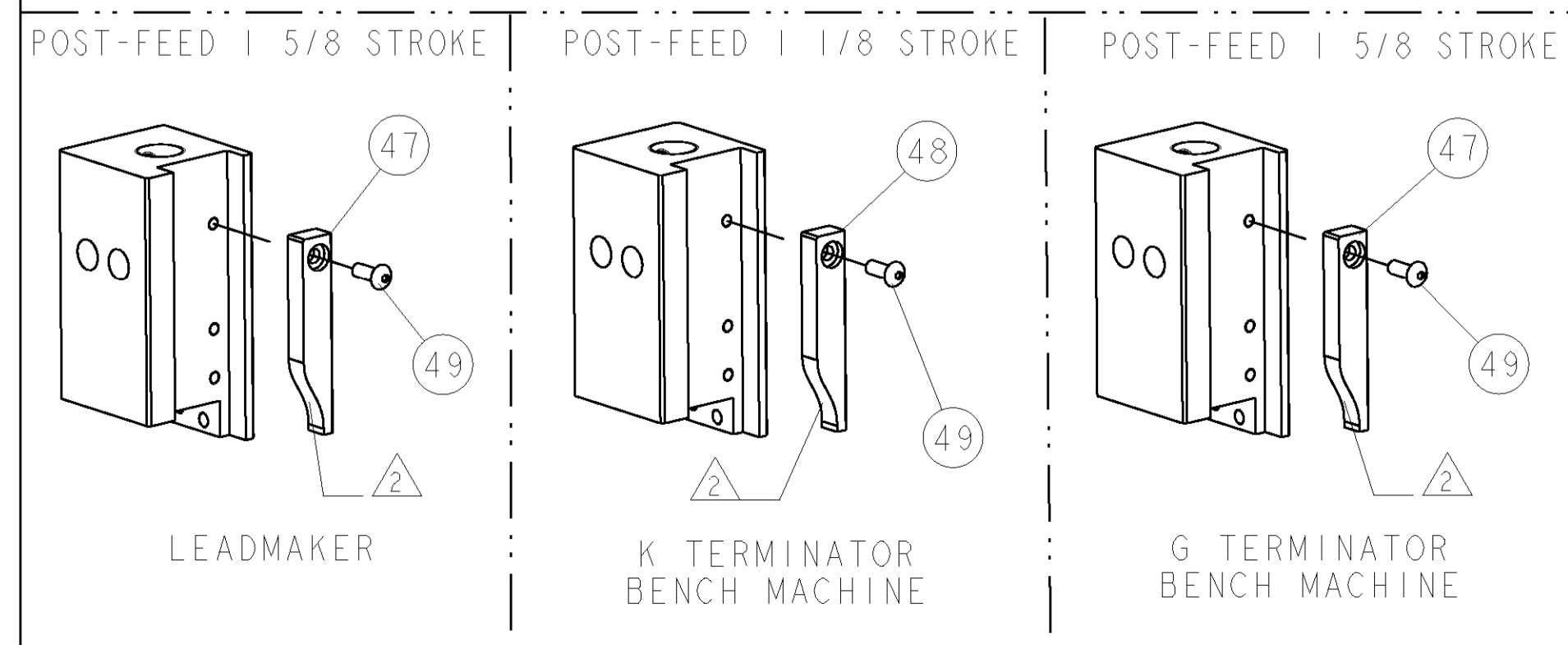
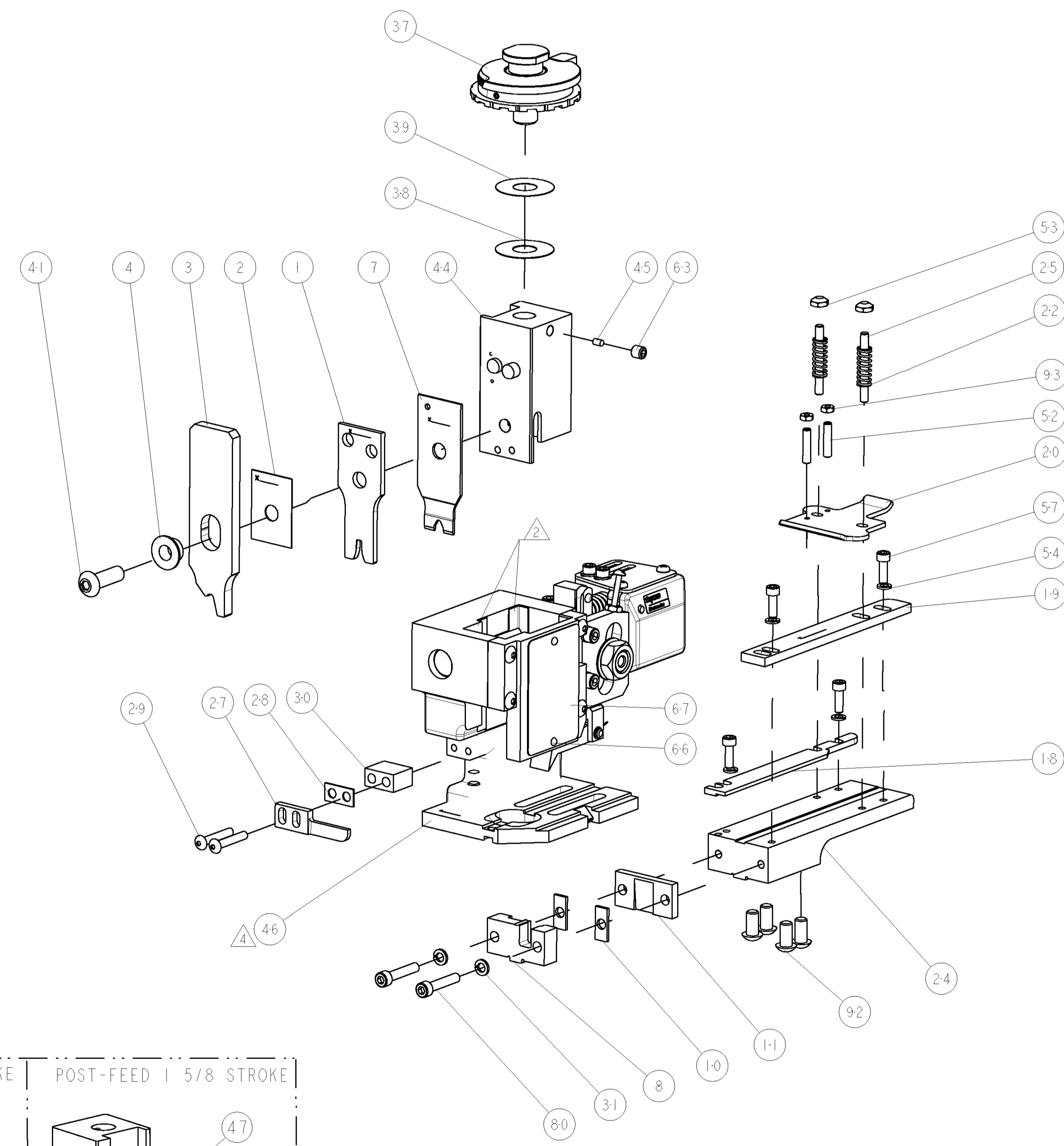
PART NUMBER	REV	FIRST USED	POWER UNIT	FEED TYPE
1855190-1	B	122500-1	LEADMAKER & BENCH MODEL G	POST FEED
1855190-2	B	565435-5	BENCH MODEL K	POST FEED
7-1855190-7	B	-	SPARE PARTS	-



TERMINAL NAME: TAB, FASTON, FLAG .250 SERIES <sup>4</sup>				
TYCO PN	AMP TERMINAL	AMP CRIMP SPECS	REF SETTING*	
42770	-	-	-	
1217324	-	CRIMP HEIGHT	WIRE SIZE	REF SETTING*
-	-	.103±.002 [2.62±0.05mm]	14AWG	B6
-	-	.096±.002 [2.44±0.05mm]	16AWG	C4
-	-	.091±.002 [2.31±0.05mm]	18AWG	D7
-	-	-	-	-
-	-	CRIMP	SIZE	TYPE
-	-	WIRE	.130 [3.30mm]	F
-	-	INSUL	.180 [4.57mm]	O
-	-	-	Ø.080-.160	-
WIRE STRIP LENGTH	TERM APPL SPEC	FEED	APPL INSTRUCTIONS	SET UP GAGE
.145-.160	NONE	.500	408-8039	458638-1

- <sup>1</sup> RECOMMENDED SPARE PARTS
- <sup>2</sup> GREASE LIGHTLY
- <sup>3</sup> GUARD MUST BE IN PLACE WHEN OPERATING APPLICATOR IN A BENCH MACHINE
- <sup>4</sup> SET FEED ON TERMINAL INSULATION BARREL.

**\*WARNING:**  
ON INSTALLATION, SET WIRE DISC TO LARGEST WIRE SIZE SETTING. USE OF SETTINGS BELOW MIN REQUIRED CRIMP HEIGHT SETTING WILL CAUSE DAMAGE TO CRIMP TOOLING.



QTY	REV	DESCRIPTION	ITEM NO
2	2	21018-4 NUT, HEX, REG 4-40	93
4	4	3-21002-3 SCR, BTN SKT HD CAP 1/4-20 X .500	92
2	2	3-21000-9 SCR, SKT HD CAP 10-32 X 1.000	80
REF	-	455745-1 GUARD WINDOW	79
-	REF	679532-1 INSERT, GUARD	78
1	1	217238-1 GENERAL INSTRUCTION PKG	72
1	1	4088039 EF APPL INST 408-8039	71
1	1	461264-5 PLATE, IDENTIFICATION	67
2	2	21017-2 SCREW, DRIVE	66
1	1	21009-2 SCR, SET, SELF LOCKING 1/4-20 X .250	63
4	4	2-21000-7 SCR, SKT HD CAP 8-32 X .500	57
4	4	21024-4 WASHER, SPRG LOCK, REG NO 8	54
2	2	21022-2 NUT, LOCK, HEX, TORQUE, 8-32	53
2	2	4-21078-8 SET SCREW, SOCKET HD, OVAL POINT	52
1	1	1-21002-7 SCR, BTN SKT CAP 6-32 X .375	49
1	-	690501-3 CAM, POST FEED, 1 1/8	48
-	1	690501-4 CAM, POST FEED, 1 5/8	47
1	1	458980-6 SUB ASSY, APPLICATOR FRAME	46
1	1	690191-1 PLUG, NYLON	45
1	1	455674-3 RAM	44
1	1	690686-1 CRIMPER, BOLT SPECIAL	41
1	1	690125-1 SHIM SUB-ASSY	39
1	1	1-469367-0 SHIM	38
1	1	879103-2 FINE ADJUST HEAD ASSEMBLY	37
2	2	21024-5 WASHER, SPRG LOCK, REG NO 10	31
1	1	2-690451-7 SPACER, STRIPPER	30
2	2	8-21002-9 SCR, BTN SKT HD CAP 8-32 X 1.00	29
1	1	1-690451-3 SPACER, STRIPPER	28
1	1	240639-1 STRIPPER (MACHINING)	27
2	2	22354-8 STUD, THREADED	25
1	1	122913-1 PLATE, STRIP GUIDE	24
2	2	4-22281-1 SPRING, COMPRESSION	22
1	1	454177-3 DRAG	20
1	1	1-454204-0 GUIDE, LOWER STRIP	19
1	1	122912-1 STRIP GUIDE, REAR	18
1	1	240644-3 PLATE, REAR SHEAR	11
2	2	240645-5 SPACER, SHEAR PLATE	10
1	1	122911-1 ANVIL, COMBINATION	8
1	1	459722-1 BLADE, SHEAR	7
1	1	238009-6 BLOCK, FL CRIMPER SPACER	4
1	1	461296-4 CRIMPER, INSULATION	3
1	1	455888-5 SPACER, CRIMPER	2
1	1	1-456410-4 CRIMPER, WIRE PREMIUM	1

DIMENSIONS: INCHES		TOLERANCES UNLESS OTHERWISE SPECIFIED:		DWG: B. HIGMAN 02MAR2007		CHK: B. HIGMAN 02MAR2007		APVD: J. ELBIN 02MAR2007		NAME: J. ELBIN		PRODUCT SPEC: -		APPLICATION SPEC: -		MATERIAL: -		FINISH: -		WEIGHT: -		CUSTOMER DRAWING: -	
0 PLC ±		1 PLC ±0.1		2 PLC ±0.01		3 PLC ±0.001		4 PLC ±0.0001		SCALE: 3:5		SHEET: 1 OF 1		REV: B		SIZE: A1		CAGE CODE: 00779		DRAWING NO: C=1855190		RESTRICTED TO: -	

CUSTOMER VIEWABLE ASSEMBLY