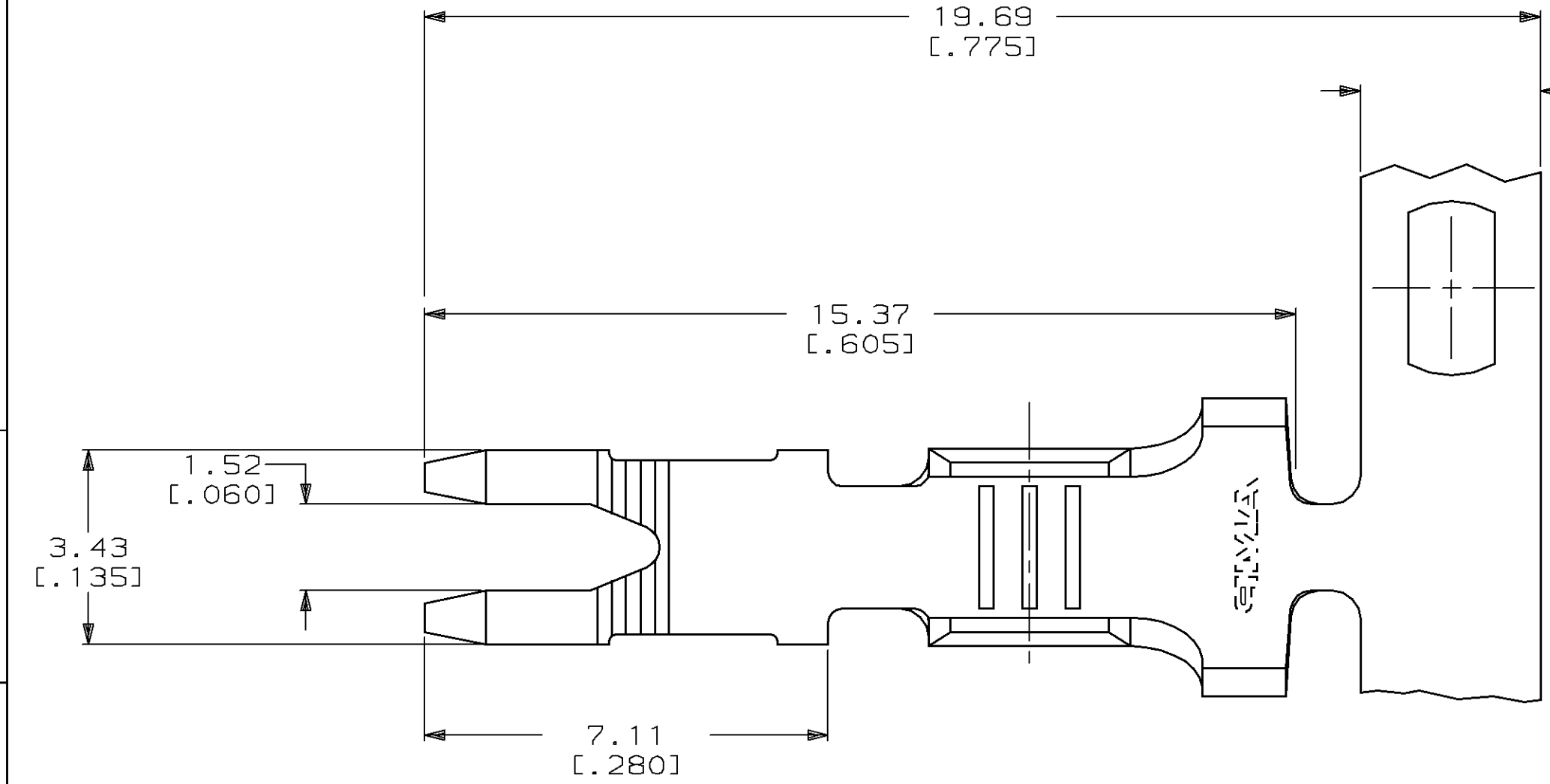
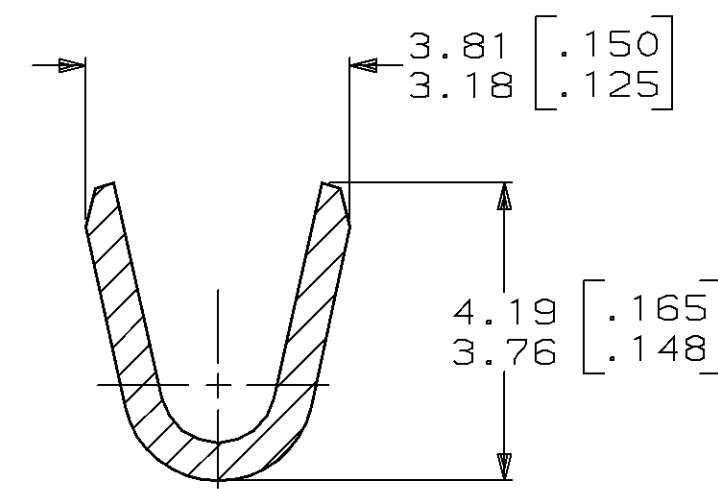
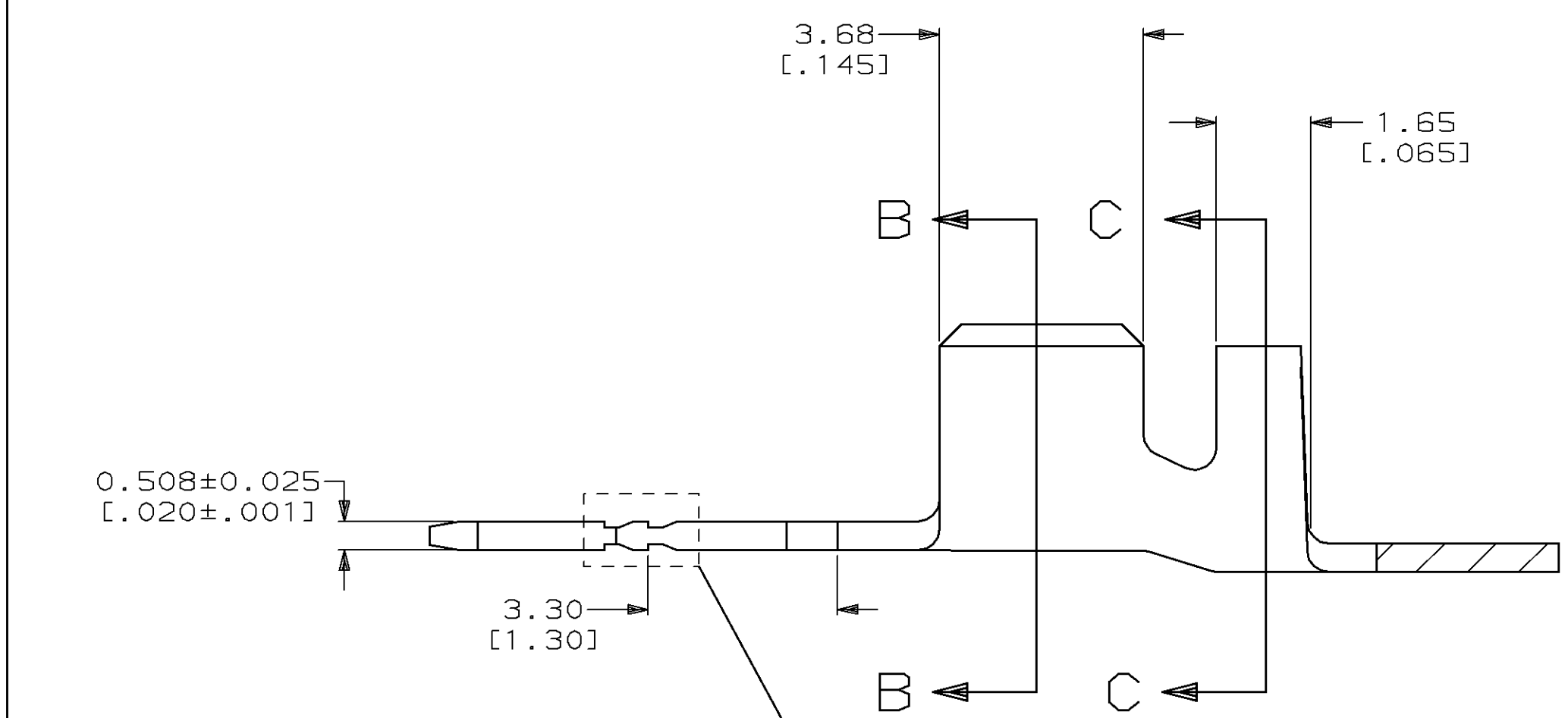


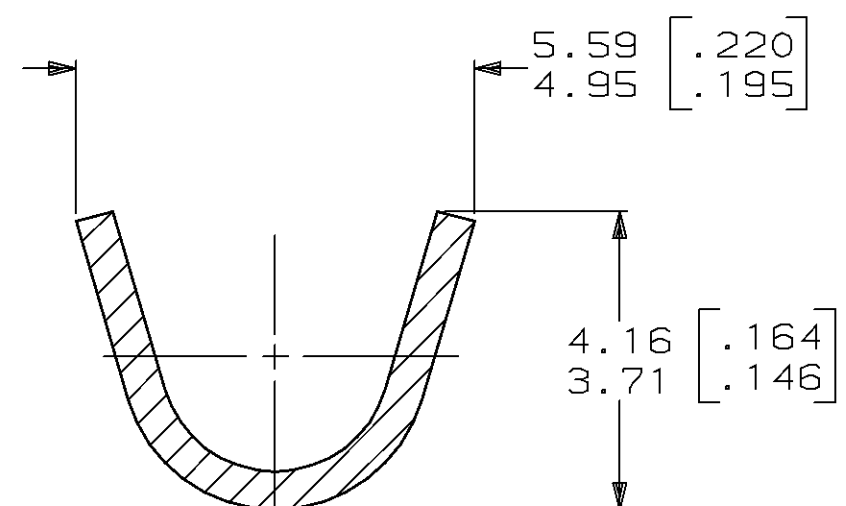
LOC		DIST		REVISIONS				DATE	APPD
P	F	ZONE	LTR	DESCRIPTION					
AF	50			D	REACTIVATED PER AF-8121-92		9-15-92	LAM	



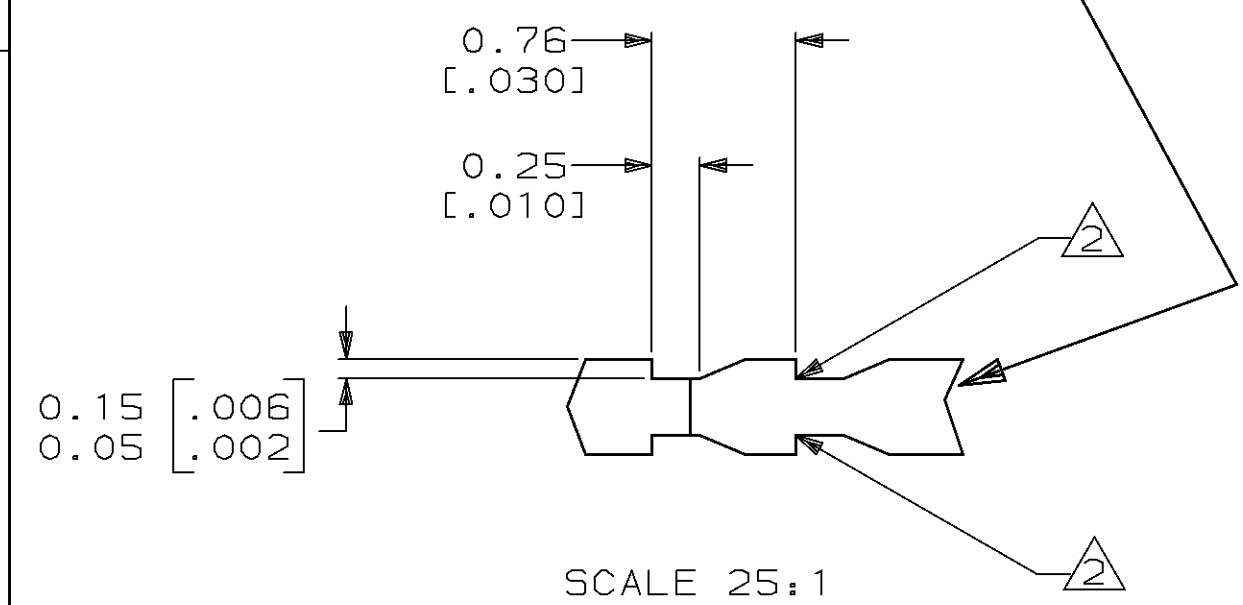
1 CONTINUOUS STRIP ON REELS  
 2 FOR OPTIMUM RETENTION IN POKE-IN TYPE MAG-MATE TERMINALS, ONE OF THE SERRATIONS, AS SHOWN, MUST BE ENGAGED WITH THE EDGE OF THE LEAF



SECTION B-B



SECTION C-C



SCALE 25:1

THIS DRAWING IS A CONTROLLED DOCUMENT FOR AMP INCORPORATED. IT IS SUBJECT TO CHANGE AND THE CONTROLLING ENGINEERING ORGANIZATION SHOULD BE CONTACTED FOR THE LATEST REVISION.

2.29-3.56 [.090-.140] DIA		0.8-2.0 mm <sup>2</sup> [18 - 14] AWG		63397-1	
INSULATION RANGE		WIRE RANGE		PART NO	
DO NOT SCALE PRINT. UNLESS SPECIFIED DIMENSIONS IN mm [INCHES] TOLERANCES ON : 2 PLC DEC ± 0.25 [.010] 3 PLC DEC ± - ANGLES ± -		DR 9-15-92 L.A.MAYER CHK 9-16-92 M.S.FEHER APPD 9-16-92 N.E.NEFF APPD 9-16-92 T.L.SHUTTER		AMP AMP Incorporated Harrisburg, PA 17105-3608	
MATERIAL 082 BRASS		PRODUCT SPEC -		NAME TAB, POKE-IN, MAG-MATE™	
FINISH 0.002032 (.000080) MIN TIN PER (MIL-T-10727)		APPLICATION SPEC 114-2050		SIZE CAGE CODE C 00779	
WEIGHT -		SCALE 10:1		DRAWING NO C=63397	
				SHEET 1 OF 1	