

AIT02ZPFC-01NL

720 Watts

Data Sheet

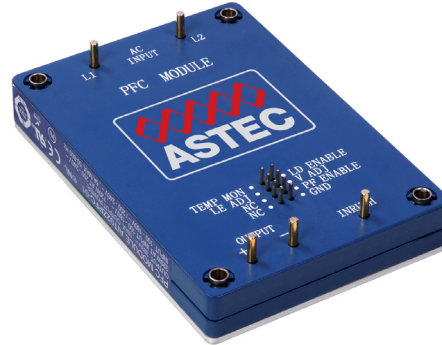
Total Power: 720 Watts
Input Voltage: 85 - 264 Vac
of Outputs: Single

SPECIAL FEATURES

- Unity power factor
- High efficiency - up to 93%
- Universal input voltage and frequency range
- Up to 720 W output power
- Negative enable function
- RTCA-D0 160 compliant
- IEC1000-3-2 compliance at 50 Hz and 800 Hz input
- 100 °C baseplate operating temperature
- Enable output to control DC-DC Converter
- Internal active switch bypassing external inrush current components

SAFETY

- UL cUL 60950 Recognized
- TUV EN60950 Licensed



Electrical Specifications

Input

Input range	85 - 264 VAC (Configurable)
Input Surge	290 VAC / 500 ms
Input Frequency	50/60 Hz / 360-800 Hz
Efficiency ²	93% @ 230 VAC, 720 W (Typical)
Total Harmonic Distortion	Less than 10%
Power Factor	0.99 typical (115 Vac; 50 Hz to 360 Hz; 320 W); 0.99 typical (230 Vac; 720 W); 0.98 typical (115 Vac; 800Hz; 320 W)

Control

LD Enable	Direct drive output to opto-isolator
PFC Enable	Neg TTL compatible
Voltage Adjust	79% to 100% Vo

Output

Output voltage	393 V typical (Io = 1.83 A / Vi > 180 Vac) 393 V typical (Io=0.1A)
Oversoltage Protection	430 max
Power Limit for AC input	Vin = 100 Vac, Pmax = 320 W Vin = 230 Vac, Pmax = 720 W Vin = 85 Vac, Pmax = 320 W

Isolation

I/O isolation	None
Input to base-plate	2700 Vdc
Output to base-plate	2700 Vdc
Leakage current	< 3 mA at 800 Hz input frequency

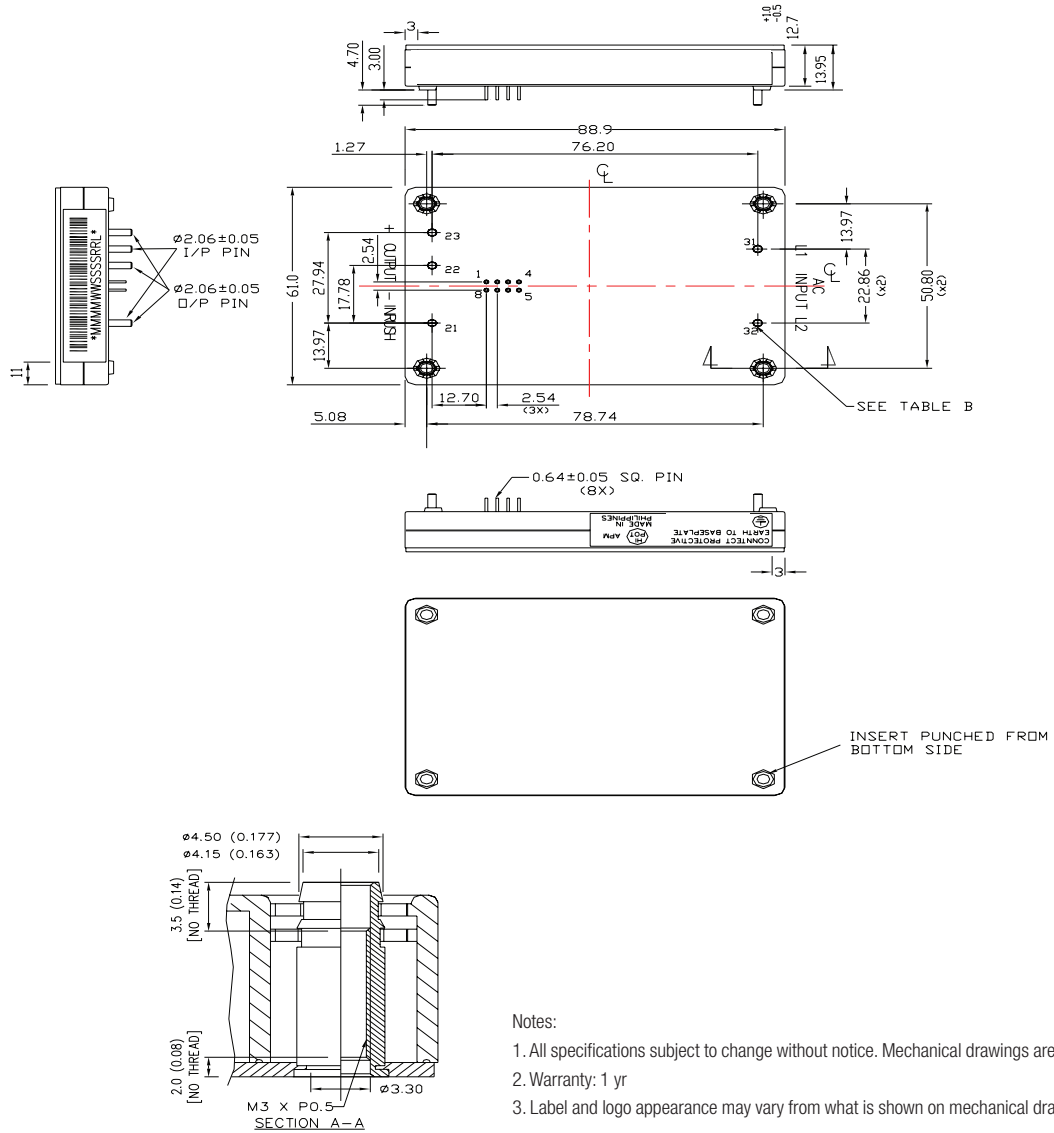
Environmental Specifications

Operating ambient temperature range	-20 °C to +100 °C (baseplate temperature)
Startup temperature	-40 °C to +100 °C (baseplate temperature)
Storage temperature	-40 °C to 120 °C
Overtemperature protection	120 °C Max
Calculated MTBF	> 1 million hours

Ordering Information

Model number	Description	Notes
AIT02ZPFC-01NL	720 W Low Profile PFC Module	Negative Enabled

Mechanical Drawings



- Notes:
1. All specifications subject to change without notice. Mechanical drawings are for reference only.
 2. Warranty: 1 yr
 3. Label and logo appearance may vary from what is shown on mechanical drawings.

WORLDWIDE OFFICES

Americas

2900 S.Diablo Way
 Tempe, AZ 85282
 USA
 +1 888 412 7832

Europe (UK)

Waterfront Business Park
 Merry Hill, Dudley
 West Midlands, DY5 1LX
 United Kingdom
 +44 (0) 1384 842 211

Asia (HK)

14/F, Lu Plaza
 2 Wing Yip Street
 Kwun Tong, Kowloon
 Hong Kong
 +852 2176 3333



www.artesyn.com

While every precaution has been taken to ensure accuracy and completeness in this literature, Artesyn Embedded Technologies assumes no responsibility, and disclaims all liability for damages resulting from use of this information or for any errors or omissions. Artesyn Embedded Technologies, Artesyn and the Artesyn Embedded Technologies logo are trademarks and service marks of Artesyn Embedded Technologies, Inc. All other names and logos referred to are trade names, trademarks, or registered trademarks of their respective owners. © 2015 Artesyn Embedded Technologies, Inc.

For more information: www.artesyn.com/power
 For support: productsupport.ep@artesyn.com