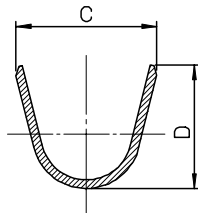


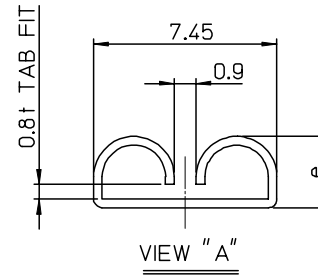
SECTION B-B''



SECTION C-C''

NOTES

1. MATERIAL : BRASS, 0.35mm THICKNESS
2. RECOMMENDED LENGTH OF WIRE STRIP IS 5.2-5.8 mm
3. FINISH, TENSION : SEE TABLE



ENG. ND.	a	b	c	d	e	WIRE RANGE	PLATED	TRADE MARK	TENSION
35725-3600	5.2	4.6	6.3	6.3		AWG #14-#12	(UNPLATED)	MK2	STANDARD TENSION
35725-3700	3.5	3.5	5.7	5.0	2.9	AWG #18-#14			
35725-3800	2.85	2.9	3.8	3.8		AWG #22-#20			
35725-3610	5.2	4.6	6.3	6.3		AWG #14-#12	(POST-TIN PLATING)		
35725-3710	3.5	3.5	5.7	5.0	2.9	AWG #18-#14			
35725-3810	2.85	2.9	3.8	3.8		AWG #22-#20			
35725-3601	5.2	4.6	6.3	6.3		AWG #14-#12	(UNPLATED)	L MK2	LOW TENSION
35725-3701	3.5	3.5	5.7	5.0	2.95	AWG #18-#14			
35725-3801	2.85	2.9	3.8	3.8		AWG #22-#20			

REVISED	DESCRIPTION
EC NO: KOR2008-0030	
DRWN: JHPARK01	2007/09/10
CHKD: W. YANG	2007/09/10
APPR: YUNSIKKIM	2007/09/10
A	REV

QUALITY SYMBOLS	GENERAL TOLERANCES (UNLESS SPECIFIED)																	
	<table border="1"> <tr> <td></td> <td>mm</td> <td>INCH</td> </tr> <tr> <td>4 PLACES</td> <td>± ---</td> <td>± ---</td> </tr> <tr> <td>3 PLACES</td> <td>± ---</td> <td>± ---</td> </tr> <tr> <td>2 PLACES</td> <td>± 0.3</td> <td>± ---</td> </tr> <tr> <td>1 PLACE</td> <td>± 0.3</td> <td>± ---</td> </tr> <tr> <td colspan="3">ANGULAR ± 1 °</td> </tr> </table>		mm	INCH	4 PLACES	± ---	± ---	3 PLACES	± ---	± ---	2 PLACES	± 0.3	± ---	1 PLACE	± 0.3	± ---	ANGULAR ± 1 °	
	mm	INCH																
4 PLACES	± ---	± ---																
3 PLACES	± ---	± ---																
2 PLACES	± 0.3	± ---																
1 PLACE	± 0.3	± ---																
ANGULAR ± 1 °																		
	DRAFT WHERE APPLICABLE MUST REMAIN WITHIN DIMENSIONS																	

DIMENSION STYLE	
MM ONLY	
DRAWN BY	DATE
JS. KANG	93/04/27
CHECKED BY	DATE
BK. CHOI	93/04/27
APPROVED BY	DATE
CW. LEE	93/04/27
MATERIAL NO.	
SEE TABLE	

SCALE	DESIGN UNITS	THIRD ANGLE PROJECTION
5:1	METRIC	
TITLE		
.250 SLIP-ON RECEPTACLE TERMINAL		
MOLEX INCORPORATED		
MATERIAL NO.	DOCUMENT NO.	SHEET NO.
SEE TABLE	SD-35725-3**0	1 OF 01
THIS DRAWING CONTAINS INFORMATION THAT IS PROPRIETARY TO MOLEX INCORPORATED AND SHOULD NOT BE USED WITHOUT WRITTEN PERMISSION		