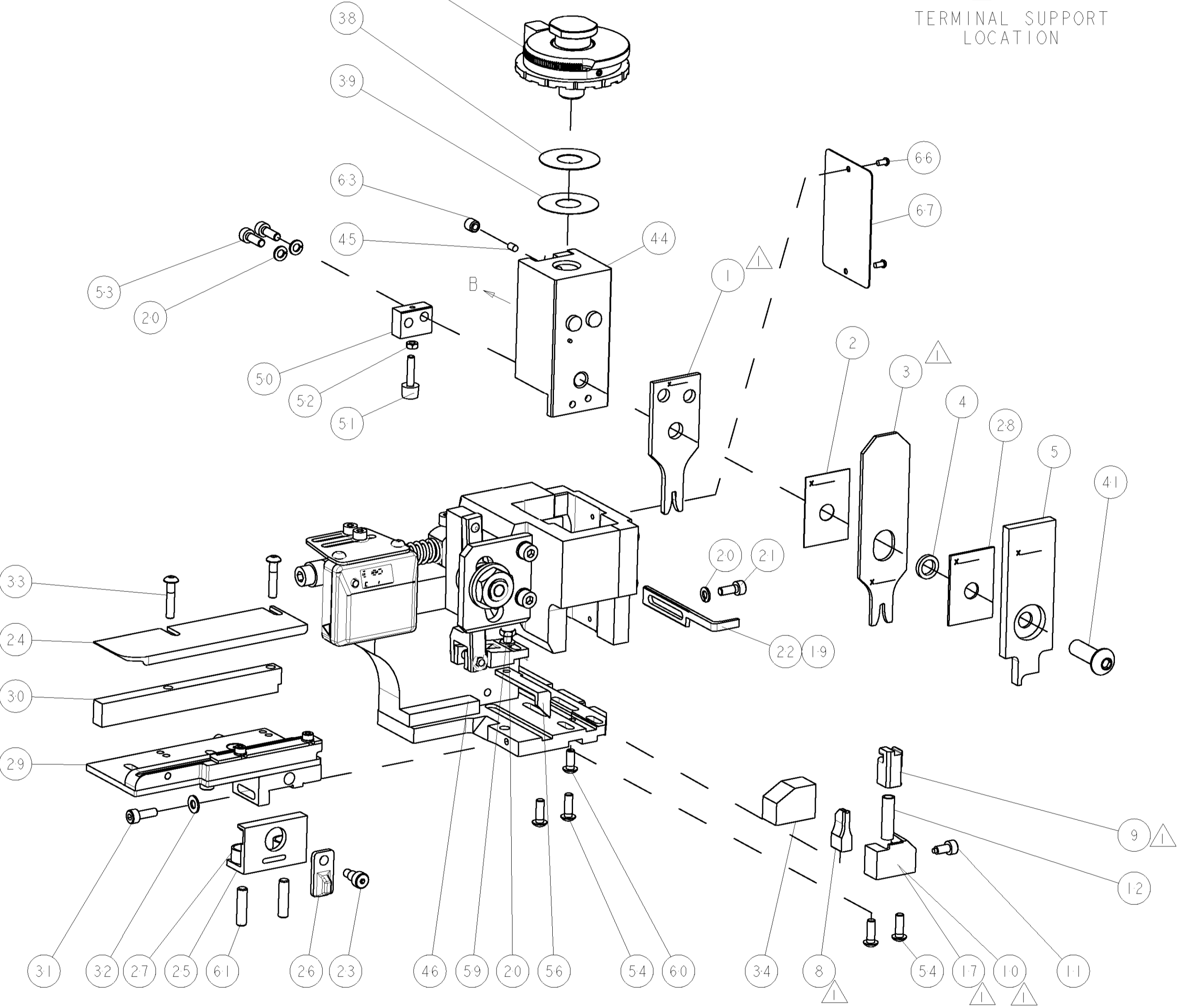
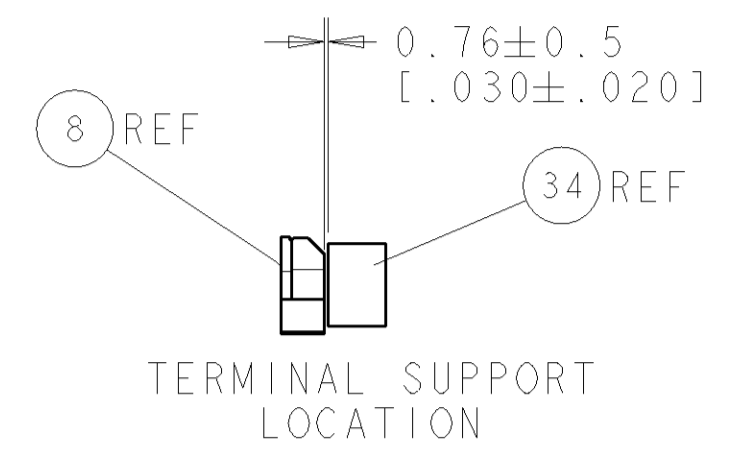
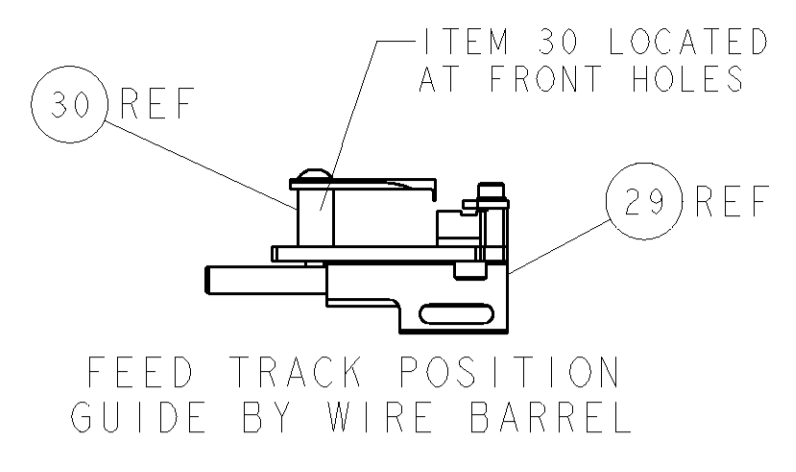
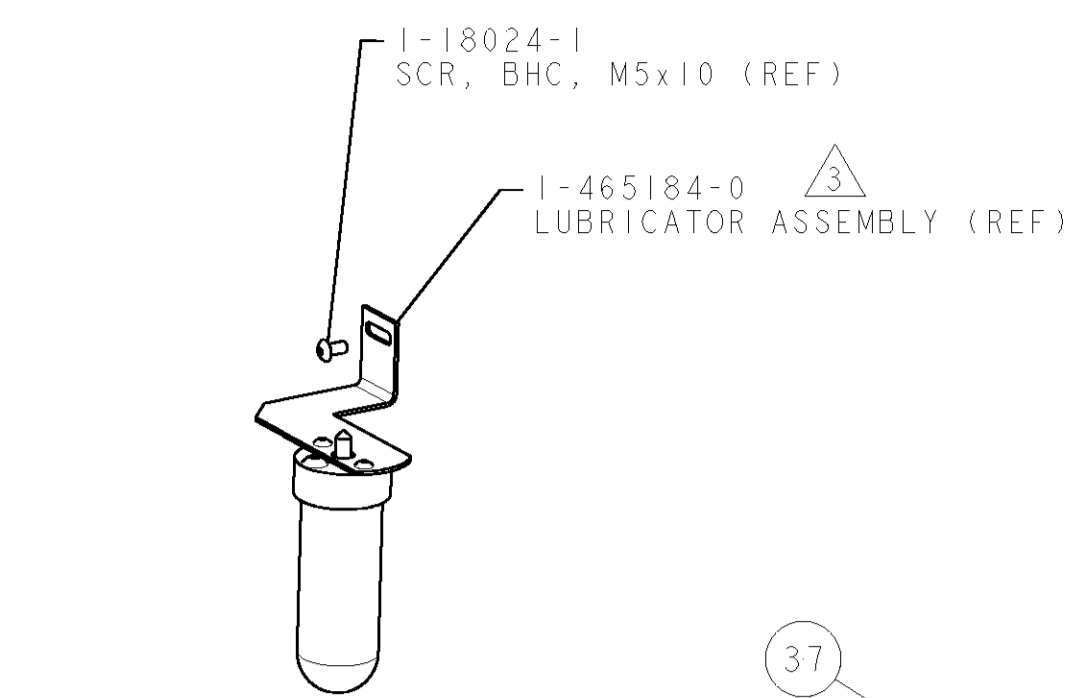
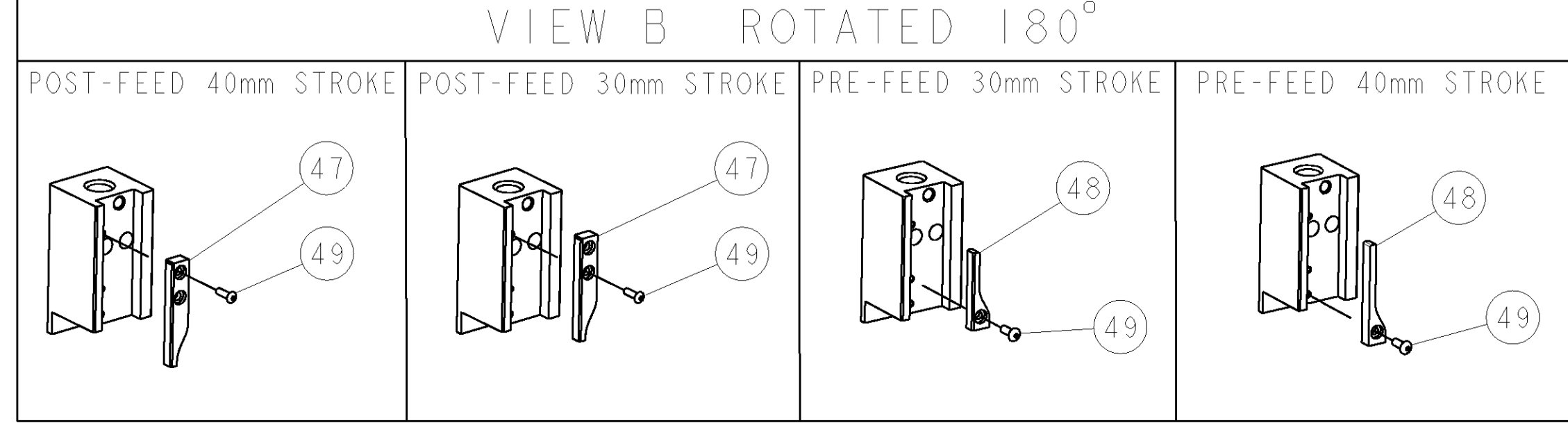


PART NUMBER	REV	TERMINATOR	FEED TYPE	DESCRIPTION
1528742-1	A	LEADMAKER	MECH POST FEED	CUTS CARRIER
1528742-2	A	BENCH	MECH PRE FEED	CUTS CARRIER
1528742-6	A	LEADMAKER	MECH POST FEED	CONTINUOUS CARRIER
7-1528742-1	A	LEADMAKER	MECH POST FEED	-1 AND SPARE PARTS
7-1528742-2	A	BENCH	MECH PRE FEED	-2 AND SPARE PARTS
7-1528742-6	A	LEADMAKER	MECH POST FEED	-6 AND SPARE PARTS
7-1528742-7	A	-	-	SPARE PARTS KIT

CRIMP DATA		FCI TERMINAL		FCI CRIMP SPECS	
TERMINAL NAME: DCK 2.8mm FEMALE TERMINAL					
CRIMP	SIZE	TYPE	RANGE		
WIRE	2.03 [1.080 IN]	F	0.50-1.00mm ²		
INSUL	2.79 [1.110 IN]	OV	1.40-2.10 [1.055-1.083 IN]		
WIRE STRIP LENGTH 3.90-4.50 [1.54-1.77 IN]		APPL INSTRUCTIONS 408-8322 & 408-8490			
TERMINAL FCI APPL DRG APPL SPEC 9 084 13 00		FEED 12.00 [1.472 IN]			
TERMINALS APPLIED					
TYCO TERM PN	MANUF TERM PN				
1949207-1	6 001 36 31				
WIRE SIZE	CRIMP HEIGHT	REF SETTING			
1.00mm ²	1.35 ± 0.05 [1.053 ± .002 IN]	C7			
0.75mm ²	1.27 ± 0.05 [1.050 ± .002 IN]	D4			
0.50mm ²	1.20 ± 0.05 [1.047 ± .002 IN]	D9			

- △ RECOMMENDED SPARE PARTS.
- 2. GREASE RAM, CAM, CAM FOLLOWER AND FEED ROD LIGHTLY.
- △ CERTAIN TERMINALS REQUIRE LUBRICATION. REFER TO THE APPLICATOR INSTRUCTION SHEET FOR MORE INFORMATION.
- 4. LUBRICATE DAILY PER THE APPLICATOR INSTRUCTION SHEET SUPPLIED WITH THE APPLICATOR.
- △ ALL CRIMP DATA SUPPLIED BY THE TERMINAL MANUFACTURER.
- △ INSULATION CRIMP HEIGHTS NOT RECOMMENDED FOR USE BY TYCO ELECTRONICS UK LTD.

* WARNING
ON INSTALLATION, SET WIRE DISC TO LARGEST WIRE SIZE SETTING. USE OF SETTINGS BELOW MIN. REQUIRED CRIMP HEIGHT SETTING WILL CAUSE DAMAGE TO CRIMP TOOLING.



LOC	DIST	REV	DESCRIPTION	DATE	OWN	APPD
A	66		SEE ECO-06-030016	22DEC2006	DP	MC

-	-	-	-	-	-	-	-	-	-	73
-	-	-	-	-	-	-	-	-	-	72
-	1	1	1	1	1	1	1338705-3	DOCUMENTATION PACKAGE	-	71
-	-	-	-	-	-	-	-	-	-	70
-	-	-	-	-	-	-	-	-	-	69
-	-	-	-	-	-	-	-	-	-	68
-	1	1	1	1	1	1	461264-5	PLATE, IDENTIFICATION	-	67
-	2	2	2	2	2	2	21017-2	SCREW, DRIVE	-	66
-	-	-	-	-	-	-	-	-	-	65
-	-	-	-	-	-	-	-	-	-	64
-	1	1	1	1	1	1	3-18031-0	SCR, SET, CUP POINT M6 X 6.0	-	63
-	-	-	-	-	-	-	-	-	-	62
-	2	2	2	2	2	2	2-18032-5	SCR, SET, FLT POINT M5 X 20.0	-	61
-	1	1	1	1	1	1	18024-7	SCR, BTN SKT HD CAP (M4 X 10.0)	-	60
-	1	1	1	1	1	1	5-18022-2	SCR, HEX HD CAP M4 X 8.0	-	59
-	-	-	-	-	-	-	-	-	-	58
-	-	-	-	-	-	-	-	-	-	57
-	1	1	1	1	1	1	1338685-1	PAWL, FEED	-	56
-	-	-	-	-	-	-	-	-	-	55
-	4	4	4	4	4	4	18024-8	SCR, BTN SKT HD CAP (M4 X 12.0)	-	54
-	2	2	2	2	2	2	1-18023-2	SCR, SKT HD CAP M4 X 12.0	-	53
-	1	1	1	1	1	1	18030-1	NUT, HEX, REG M3	-	52
-	1	1	1	1	1	1	811242-5	BUMPER, HOLD DOWN	-	51
-	1	1	1	1	1	1	690753-2	SPACER, TONKER	-	50
-	1	1	1	1	1	1	18024-3	SCR, BTN SKT HD CAP (M3 X 10.0)	-	49
-	1	1	1	1	1	1	1338675-1	CAM, UNIVERSAL PRE FEED	-	48
-	1	1	1	1	1	1	1338676-1	CAM, UNIVERSAL POST-FEED	-	47
-	1	1	1	1	1	1	1320999-3	APPLICATOR SUBASSEMBLY, HDI	-	46
-	1	1	1	1	1	1	690191-1	PLUG, NYLON	-	45
-	1	1	1	1	1	1	1338660-1	RAM	-	44
-	-	-	-	-	-	-	-	-	-	43
-	-	-	-	-	-	-	-	-	-	42
-	1	1	1	1	1	1	2-18024-6	SCR, BTN SKT HD CAP (M8 X 25.0)	-	41
-	-	-	-	-	-	-	-	-	-	40
-	1	1	1	1	1	1	690125-1	SHIM SUB-ASSY	-	39
-	1	1	1	1	1	1	1-469367-0	SHIM	-	38
-	1	1	1	1	1	1	879103-3	FINE ADJUST HEAD ASSEMBLY	-	37
-	-	-	-	-	-	-	-	-	-	36
-	-	-	-	-	-	-	-	-	-	35
-	1	1	1	1	1	1	1320934-4	SUPPORT, TERMINAL	-	34
-	2	2	2	2	2	2	1-18024-0	SCR, BTN SKT HD CAP (M4 X 20.0)	-	33
-	1	1	1	1	1	1	18027-2	WASHER, FLAT, REG M4	-	32
-	1	1	1	1	1	1	1-18023-2	SCR, SKT HD CAP M4 X 12.0	-	31
-	1	1	1	1	1	1	1320908-1	SPACER, STRIP GUIDE	-	30
-	1	1	1	1	1	1	1-1633073-3	STRIP GUIDE ASSEMBLY	-	29
-	1	1	1	1	1	1	1-455888-0	SPACER, CRIMPER	-	28
-	2	2	2	2	2	2	1-22284-0	SPRING, COMPRESSION	-	27
-	1	1	1	1	1	1	356835-1	LEVER, DRAG RELEASE	-	26
-	1	1	1	1	1	1	240792-1	DRAG, TERMINAL	-	25
-	1	1	1	1	1	1	1320928-1	PLATE, STRIP GUIDE	-	24
-	1	1	1	1	1	1	980371-4	SCR, SKT HD SHLDR 5.0 DIA X 6.0	-	23
-	1	1	1	1	1	1	690472-2	STRIPPER	-	22
-	1	1	1	1	1	1	1-18023-1	SCR, SKT HD CAP M4 X 10.0	-	21
-	4	4	4	4	4	4	18025-2	WASHER, SPRG LOCK, REG M4	-	20
-	1	1	1	1	1	1	690472-1	STRIPPER	-	19
-	-	-	-	-	-	-	-	-	-	18
-	1	1	1	1	1	1	1338684-1	SHEAR HOLDER, FRONT	-	17
-	-	-	-	-	-	-	-	-	-	16
-	-	-	-	-	-	-	-	-	-	15
-	-	-	-	-	-	-	-	-	-	14
-	-	-	-	-	-	-	-	-	-	13
-	1	1	1	1	1	1	3-22280-3	SPRING, COMPRESSION	-	12
-	1	1	1	1	1	1	356885-4	STOP, SHEAR	-	11
-	1	1	1	1	1	1	1320921-1	SHEAR HOLDER, FRONT, CUT	-	10
-	1	1	1	1	1	1	454276-1	FLOATING SHEAR, FRONT	-	9
-	1	2	2	2	1	1	3-1633131-3	ANVIL, COMBINATION .080	-	8
-	-	-	-	-	-	-	-	-	-	7
-	-	-	-	-	-	-	-	-	-	6
-	1	1	1	1	1	1	1-455889-4	DEPRESSOR, SHEAR	-	5
-	1	1	1	1	1	1	238011-5	BLOCK, CRIMPER SPACER	-	4
-	1	2	2	1	1	1	2-854830-7	CRIMPER, INSULATION SPECIAL	-	3
-	1	1	1	1	1	1	455888-3	SPACER, CRIMPER	-	2
-	1	2	2	2	1	1	1-456405-6	CRIMPER, WIRE PREMIUM	-	1

-	-	-	-	-	-	-	-	-	-	84
-	-	-	-	-	-	-	-	-	-	83
-	-	-	-	-	-	-	-	-	-	82
-	-	-	-	-	-	-	-	-	-	81
-	-	-	-	-	-	-	-	-	-	80
-	-	-	-	-	-	-	-	-	-	79
-	-	-	-	-	-	-	-	-	-	78
-	-	-	-	-	-	-	-	-	-	77
-	-	-	-	-	-	-	-	-	-	76
-	-	-	-	-	-	-	-	-	-	75
-	-	-	-	-	-	-	-	-	-	74
-77	-76	-72	-71	-6	-2	-1	PART NO	DESCRIPTION	ITEM NO	

DIMENSIONS:	TOLERANCES UNLESS OTHERWISE SPECIFIED:	APPROVED:	DATE:	NAME:
mm [IN]	0 PLC ± 1 PLC ± 2 PLC ± 3 PLC ± 4 PLC ± ANGLES ±	M. CLIFFORD	22NOV2006	M. CLIFFORD
MATERIAL:	FINISH:	WEIGHT:	CUSTOMER DRAWING:	SCALE: 3:5